

Direct View Monochromatic & RGB Pixel LED

PRODUCT SPECIFICATION SHEET

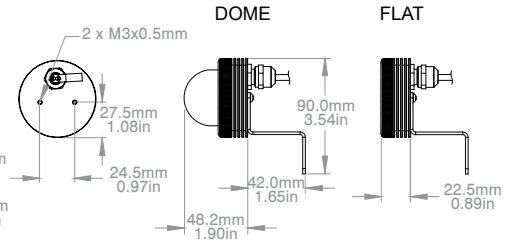
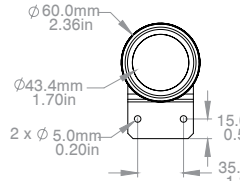
DATE:

TYPE:

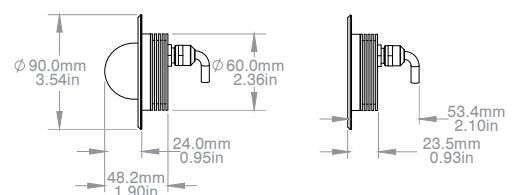
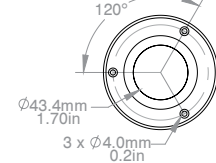
COMPANY:

PROJECT:

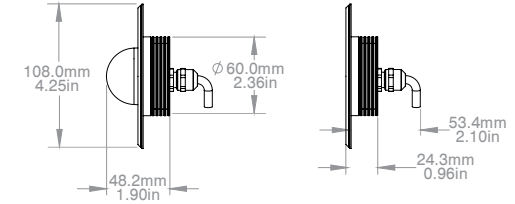
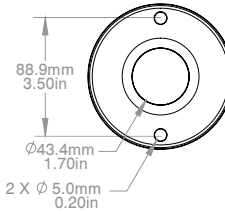
BRACKET MOUNT



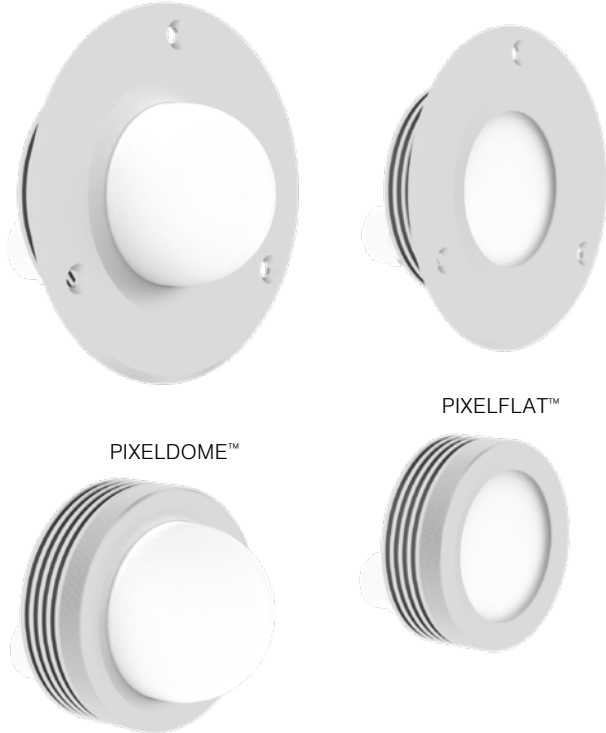
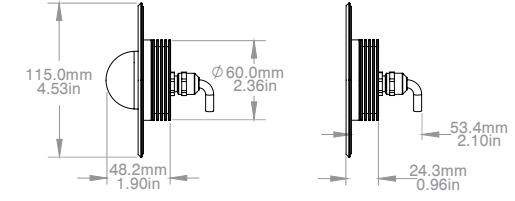
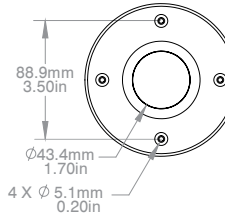
FLANGE MOUNT 90MM



FLANGE MOUNT 105MM



FLANGE MOUNT 115MM



FEATURES:

- IP66 rated for dry, damp or wet locations
- Indoor or outdoor applications from -40°C to +50°C, -40°F to +122°F
- Machined anodized aluminum body designed for superior thermal management
- Projected Lifetime 50,000hrs @ 50°C, 86°F (B50, L70)
- 5 year limited warranty

OPTIONS:

- RGB or Monochromatic LED packages available
- Available in clear matte or black matte outdoor anodized finish
- Bracket, flange or junction box mounting
- Impact resistant, opal acrylic dome lens for 180°+ viewing angle or opal acrylic flat lens

SPECIFICATION LOGIC: PIXELDOME™ & PIXELFLAT™

FAMILY	OPTICS	BODY COLOR	LED POWER	LED COLOR	CONTROL	MOUNTING ²
PIXEL	DOME FLAT	CM - Clear Matte Anodized BM - Black Matte Anodized CUST - Custom Color ³	3W	2700K 3000K 3500K 4000K 5000K 6500K RD - Red GR - Green BL - Blue AM - Amber RGB - Red, Green & Blue	ND - Non-Dimming ¹ DMX PD - Power/Data ³	BK - Bracket Mount FM90 - Flange Mount 90mm FM105 - Flange Mount 105mm FM115 - Flange Mount 115mm ML - Mountless

PRODUCT CONFIGURATION

1. Non-Dimming control option only available with monochromatic LED Color options
 2. For junction box options see accessories on Page 2.
 3. Non standard option and might require longer leadtime than usual. Contact factory for details.

Direct View Monochromatic & RGB Pixel LED

PRODUCT SPECIFICATION SHEET

PRODUCT SPECIFICATIONS: PIXELDOME™ & PIXELFLAT™						
ELECTRICAL	Rated Input Voltage	24V DC				
	Power Consumption (Max.)	3.5W				
	Approved Remote AC/DC Power Supply	GVA Lighting, Inc. Power-Data Box Only				
OPTICAL	Light Source	1 x Red, 1 x Green, 1 x Blue LEDs or 3 x Mono Color LEDs				
	Lumens (Typical)	125				
	Optics (FWHM)	PMMA Opal Dome Lens, 180°+ Viewing Angle or PMMA Opal Flat Lens				
	Lumen Maintenance (L70)	50,000 hours @ 50°C (B50, L70)				
CONTROL	Control Interface	DMX-512-A or No Dimming, On/Off				
	Control Systems	GVA Lighting Power-Data Equipment/ Any third party DMX512-A controllers				
PHYSICAL	Size (Width x Depth PIXELDOME™ / Depth PIXELFLAT™)	mm	Bracket Mount	Flange Mount 90mm	Flange Mount 105mm	Flange Mount 115mm
		in	60 x 48 / 23	90.0 x 48.2/ 23.5	108.0 x 48.2/ 24.3	115.0 x 48.2/ 24.3
	Weight	kg	0.16	0.15	0.15	0.15
		lbs	0.34	0.33	0.33	0.33
	Housing	Machined 6063 T6 Aluminum, Anodized, Opal PMMA Dome/ Flat Lens				
	Fixture Connections	300mm Lead Cable, tinned stripped leads				
	Rated Operation Temperature	-40°C to +50°C, -40°F to 122°F				
Environment	Indoor/Outdoor, Dry or Damp or Wet Locations					
CERTIFICATION & SAFETY	Listings	ETL/cETL, RoHS				
	IEC Classifications	Surface or Recessed Mount, Indoor/Outdoor-Use, Class III, IP66, for normal use				
	UL/CSA Classification	Surface Mount or Recessed Mount, For Dry or Damp or Wet Locations				



These figures are subject to change due to further development and innovations of LED light sources.

ORDERING LOGIC: ACCESSORIES	
JUNCTION BOX KITS	
	JB110 PART NUMBER 122393 *Fits with FM105 Mounting Option *Kit includes required screws for mounting luminaire to junction box
CABLE GLANDS	
	SIZE PART NUMBER 3/4in NPT 280271 Min. cable O.D: 6.5mm, Max. cable O.D: 14.0mm M16x1.5 280142 Min. cable O.D: 4.5mm, Max. cable O.D: 10.0mm
	RTV 102 SILICONE¹
	SIZE PART NUMBER 85 mL tube 260186

1. All outdoor applications require RTV 102 silicone to be applied to all cable entries, thread plugs, cable glands, and conduit adapters. See installation guide for more details