

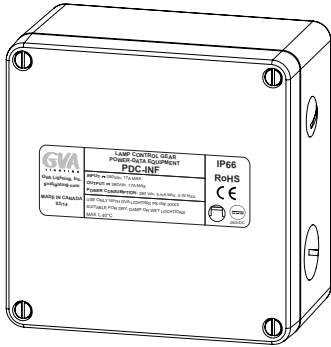
Product Specification Sheet

Date: _____

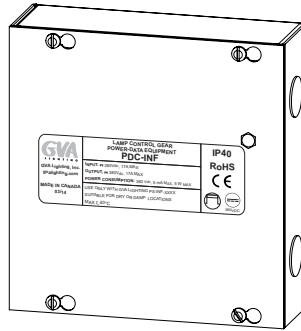
Type: _____

Company: _____

Project: _____



IP66 OUTDOOR MODEL



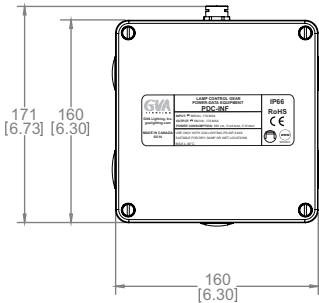
IP40 INDOOR MODEL

Power-Data converter for INFINITY® LED Luminaires

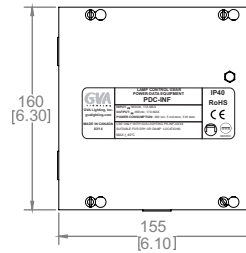
Features

- Input: 380V DC
- Output: 380V DC + ZH Data
- Control Input: DMX, DALI* or 0~10V
- Cast aluminum enclosure, Grey powder coated finish (IP66 version)
- Galvanized steel enclosure (IP40 version)
- Projected lifetime: >50,000hrs @ 30°C
- Terminal blocks included for easy connections

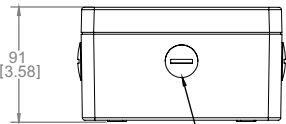
Mechanical Drawings



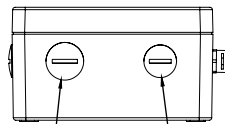
IP66 MODEL



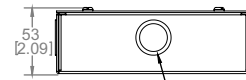
IP40 MODEL



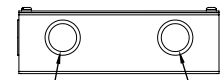
OUTPUT TO LUMINAIRES
M16 PLUG



380VDC I/O
M25 PLUG DATA I/O
M16 PLUG



OUTPUT TO LUMINAIRES
1/2-3/4" DUAL KNOCKOUT



380VDC I/O
1/2-3/4" DUAL KNOCKOUT DATA I/O
1/2-3/4" DUAL KNOCKOUT

Ordering Information

ITEM NUMBERS (INDOOR)	DESCRIPTION	ITEM NUMBERS (OUTDOOR)	DESCRIPTION
G20452	POWER-DATA CONVERTER, PDC-INF, 1DMX, INF+ZH, IP40	G20342	POWER-DATA CONVERTER, PDC-INF, 1DMX, INF+ZH, IP66
G20453	POWER-DATA CONVERTER, PDC-INF, 2DMX, INF+ZH, IP40	G20431	POWER-DATA CONVERTER, PDC-INF, 2DMX, INF+ZH, IP66
G20454*	POWER-DATA CONVERTER, PDC-INF, DALI/0~10V, INF+ZH, IP40	G20343*	POWER-DATA CONVERTER, PDC-INF, DALI/0~10V, INF+ZH, IP66

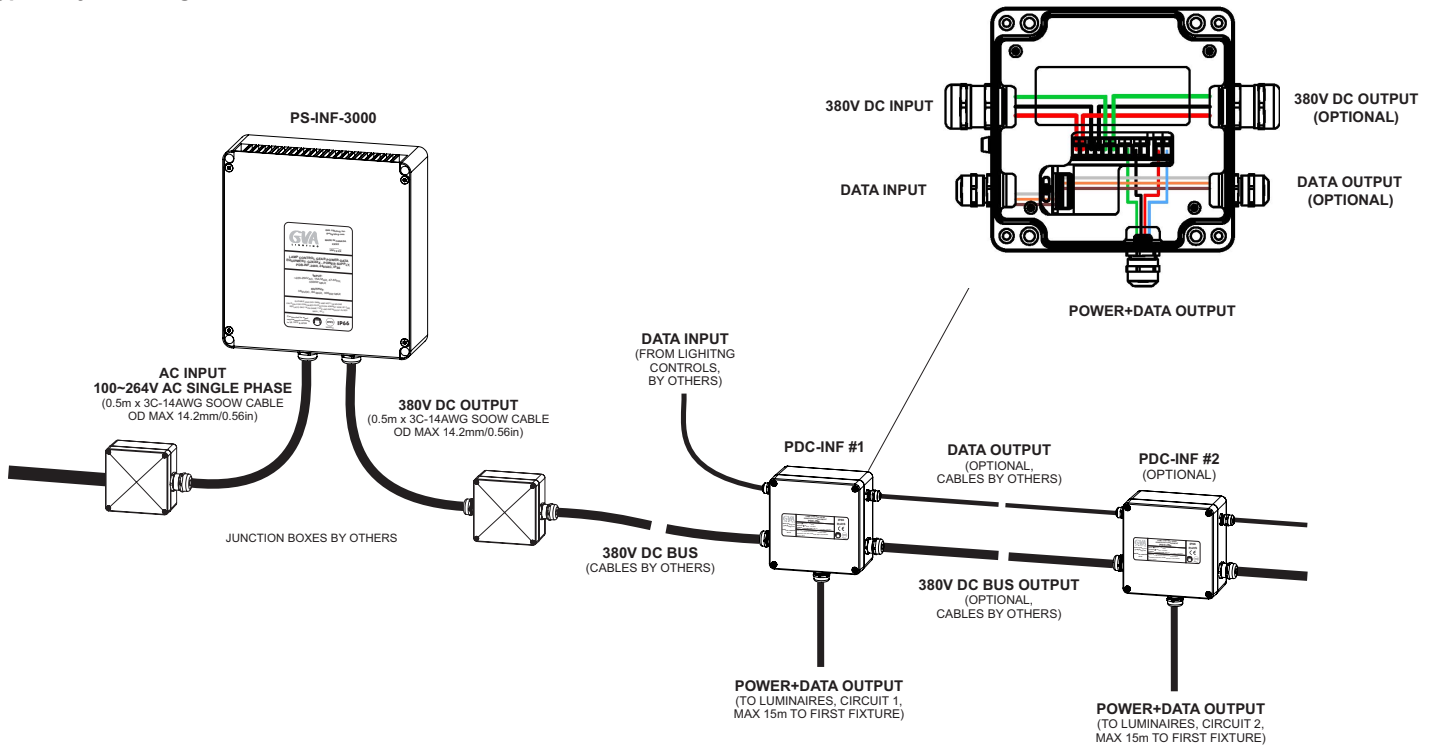
* DALI CONVERTERS ARE SINGLE ZONE, NOT FOR COLOR CHANGING

Metric To NPT Conduit Adapters For IP66 Enclosures

ITEM NUMBER	DESCRIPTION
241431	ADAPTER, CONDUIT, M25 TO 3/4-NPT, BRASS, NICKEL PLTD

Product Specification Sheet

Typical System Diagram: PS-INF-3000 and 1DMX control shown



Specifications: PDC-INF-IP66

Nominal Length

Electrical	Operating Voltage			380V DC I/O
	Output Current Maximum			17A
	Control Protocols			DMX, 0~10V, DALI*
	Power Consumption			5W
Physical	Length x Width x Height	mm	171 x 160 x 91	
		in	6.7 x 6.3 x 3.6	
	Weight	kg	2.5	
		lbs	5.5	
	Housing	Powder-coated cast aluminum enclosure		
	Fixture Connections	Internal terminal blocks		
Rated Operating Temperature	-30°C to +50°C, -22°F to 122°F			
Environment	Dry, Damp or Wet Locations, 0-100% humidity			

* DALI CONVERTERS ARE SINGLE ZONE, NOT FOR COLOR CHANGING

Specifications: PDC-INF-IP40

Nominal Length

Electrical	Operating Voltage			380V DC I/O
	Output Current Maximum			17A
	Control Protocols			DMX, 0~10V, DALI*
	Power Consumption			5W
Physical	Length x Width x Height	mm	177 x 181 x 58	
		in	7 x 7.1 x 2.3	
	Weight	kg	1.5	
		lbs	3.3	
	Housing	Galvanized steel		
	Fixture Connections	Internal terminal blocks		
Rated Operating Temperature	0°C to +50°C, 32°F to 122°F (IP66)			
Environment	Dry or Damp Locations only			

* DALI CONVERTERS ARE SINGLE ZONE, NOT FOR COLOR CHANGING