

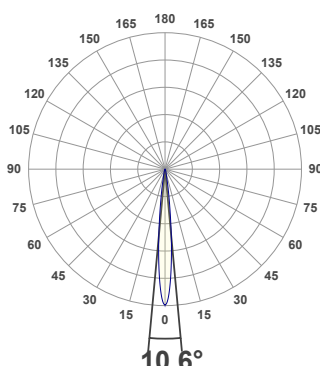
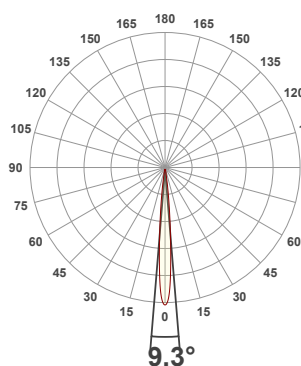


PRODUCT INFORMATION

MEASUREMENT SERIAL NUMBER:	PH-GVA-2024.Jun.24-3594-VO
DATE OF MEASUREMENT:	6/24/2024
MANUFACTURER:	GVA LIGHTING, INC.
PRODUCT NAME:	STR10 ARCHITECTURAL
SIZE (width x length x height):	49 mm x 300 mm x 61 mm
LOT:	sm303D300L2R8000
PROFILE LEGEND:	PIXEL RESOLUTION: R150/200/300 – PIXEL SIZE 150/200/300 mm
INTERNAL ACCESSORIES:	VOLTAGE LEGEND: INF – INFINITY 380 V DC, ELV – 48 V DC

ANGULAR DISTRIBUTION AT C0/180

ANGULAR DISTRIBUTION AT C90/270



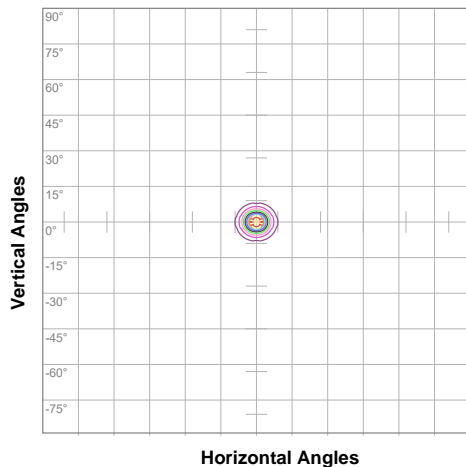
LIGHT OUTPUT DATA

TOTAL LUMEN OUTPUT:	1084 lm
EFFICACY:	55 lm/W
PEAK INTENSITY:	23127 cd
COLOR RENDERING INDEX (CRI):	84.2
COLOR TEMPERATURE (CCT):	3063K
FIDELITY INDEX (TM30Rf):	84.7
GAMUT INDEX (TM30Rg):	95.7

BEAM OUTPUT DATA

BEAM ANGLE (FWHM) C0/180:	9.3°
BEAM ANGLE (FWHM) C90/270:	10.6°
FIELD ANGLE (10%) C0/180:	18°
FIELD ANGLE (10%) C90/270:	20.1°
NUMBER OF PLANES MEASURED:	36

ISOCANDELA DIAGRAM

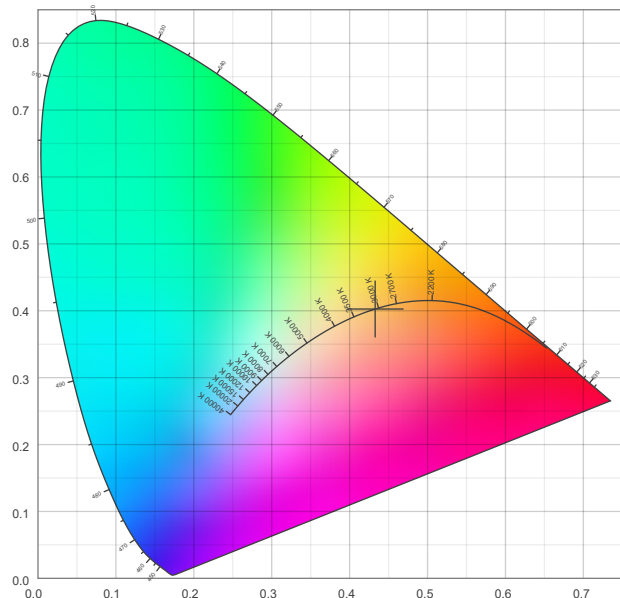


10%	2309 cd
20%	4617 cd
30%	6926 cd
40%	9235 cd
50%	11543 cd
60%	13852 cd
70%	16161 cd
80%	18469 cd
90%	20778 cd

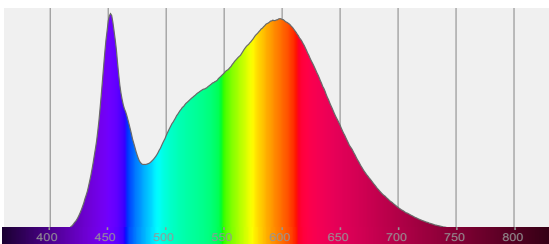
POWER OUTPUT DATA

INPUT POWER:	19.9 W
INPUT VOLTAGE:	380 V DC
INPUT CURRENT:	0.052 A
POWER FACTOR:	1.0
OPTICAL POWER:	3.30 mW
PEAK WAVELENGTH:	452 nm
DOMINANT WAVELENGTH:	583 nm

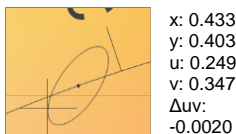
CIE 1931



SPECTRAL DISTRIBUTION



CIE 1931 ZOOM



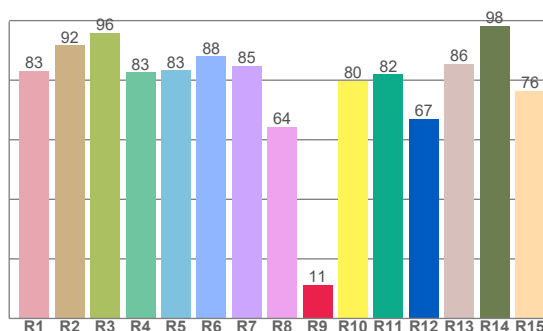
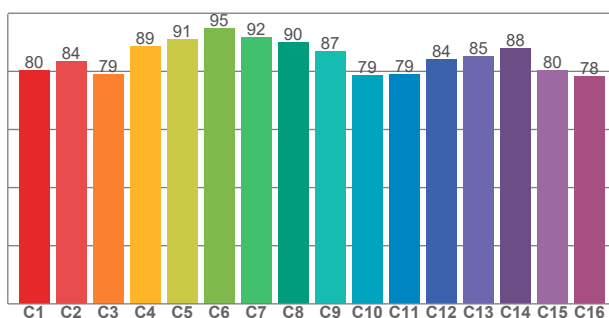
ZONAL LUMEN SUMMARY

0°-10° 762 lm	10°-20° 191 lm	20°-30° 84.3 lm	30°-40° 33.6 lm	40°-50° 11.3 lm	50°-60° 1.24 lm	60°-70° 0.027 lm	70°-80° 0.004 lm	80°-90° 0.003 lm
90°-100° 0.001 lm	100°-110° 0.001 lm	110°-120° 0.000 lm	120°-130° 0.000 lm	130°-140° 0.000 lm	140°-150° 0.000 lm	150°-160° 0.000 lm	160°-170° 0.000 lm	170°-180° 0.001 lm

COLOR DETAILS

TM30: 84.7

CRI: 84.2 (R1-R8)



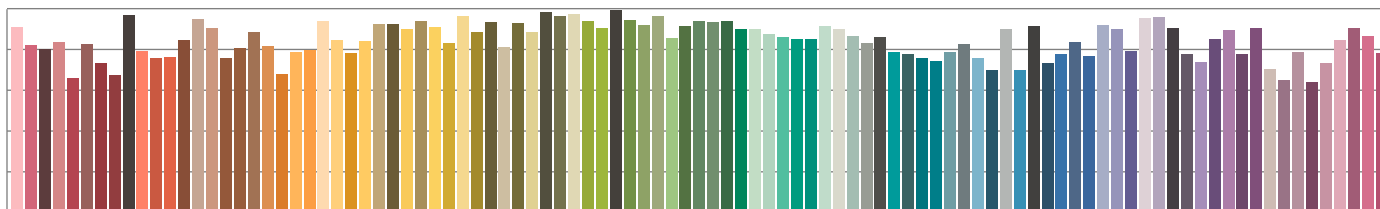
TM30 C values, 16 binned values out of total of 99 C values

CRI R values, only R1-R8 are used to calculate final CRI value

C1	C2	C3	C4	C5	C6	C7	C8	C9	C10	C11	C12	C13	C14	C15	C16
80.3	83.5	79.0	88.7	91.0	94.8	91.6	89.9	86.8	78.6	78.8	84.0	85.3	87.9	80.3	78.2

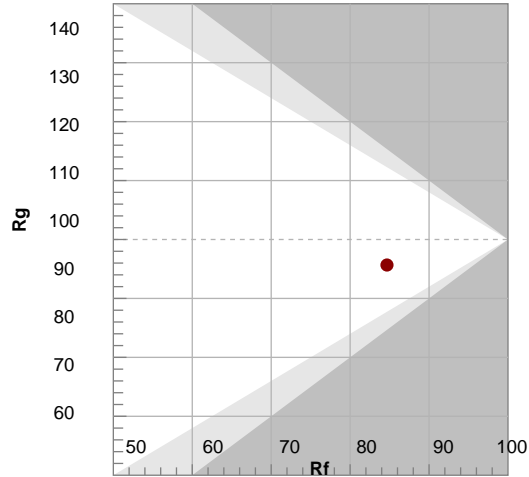
R1	R2	R3	R4	R5	R6	R7	R8	R9	R10	R11	R12	R13	R14	R15
83.1	91.6	95.8	82.6	83.2	87.9	84.9	64.3	11.2	79.7	81.9	66.9	85.6	98.3	76.5

TM30 COLOR EVALUATION SAMPLE



TM30 DETAILS

Color	TM30 Rf	TM30 Rg	TM30 Rm	TM30 Rn
1	83	92	96	83
2	83	83	88	85
3	64	80	82	67
4	11	86	98	76
5	83	83	88	85
6	83	83	88	85
7	83	83	88	85
8	83	83	88	85
9	83	83	88	85
10	83	83	88	85
11	83	83	88	85
12	83	83	88	85
13	83	83	88	85
14	83	83	88	85
15	83	83	88	85



FIDELITY INDEX

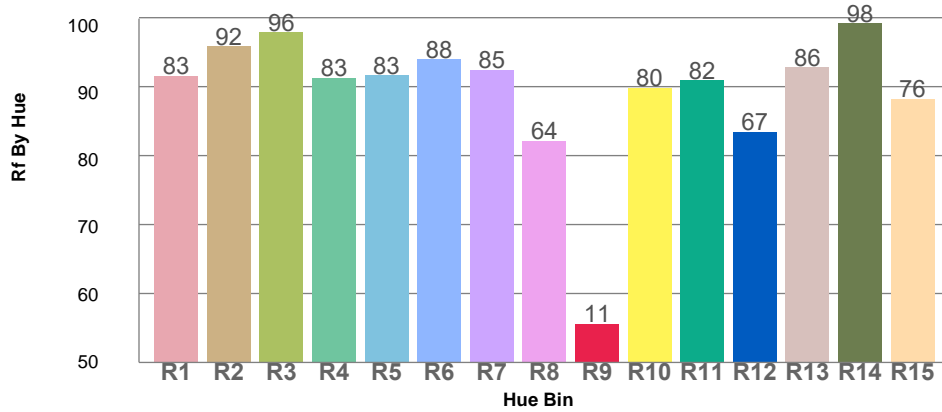
Rf 84.7

GAMUT INDEX

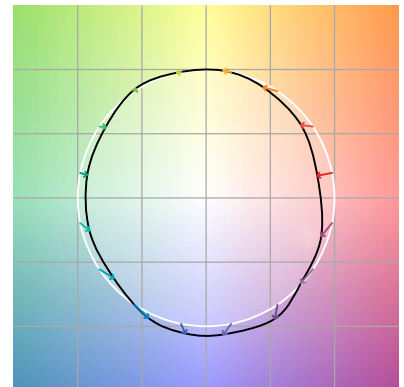
Rg 95.7

Approx. limits for sources on the Planckian locus.
Approx. limits for practical light sources.

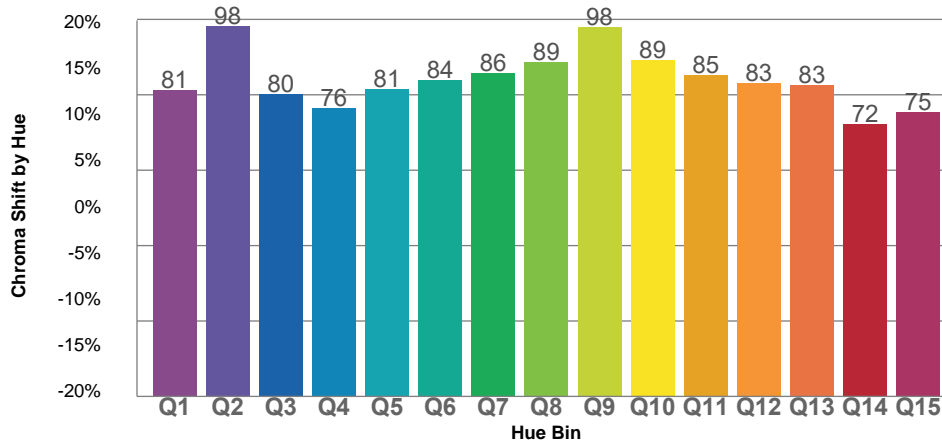
TM30 OVER 50



COLOR VECTOR GRAPHICS



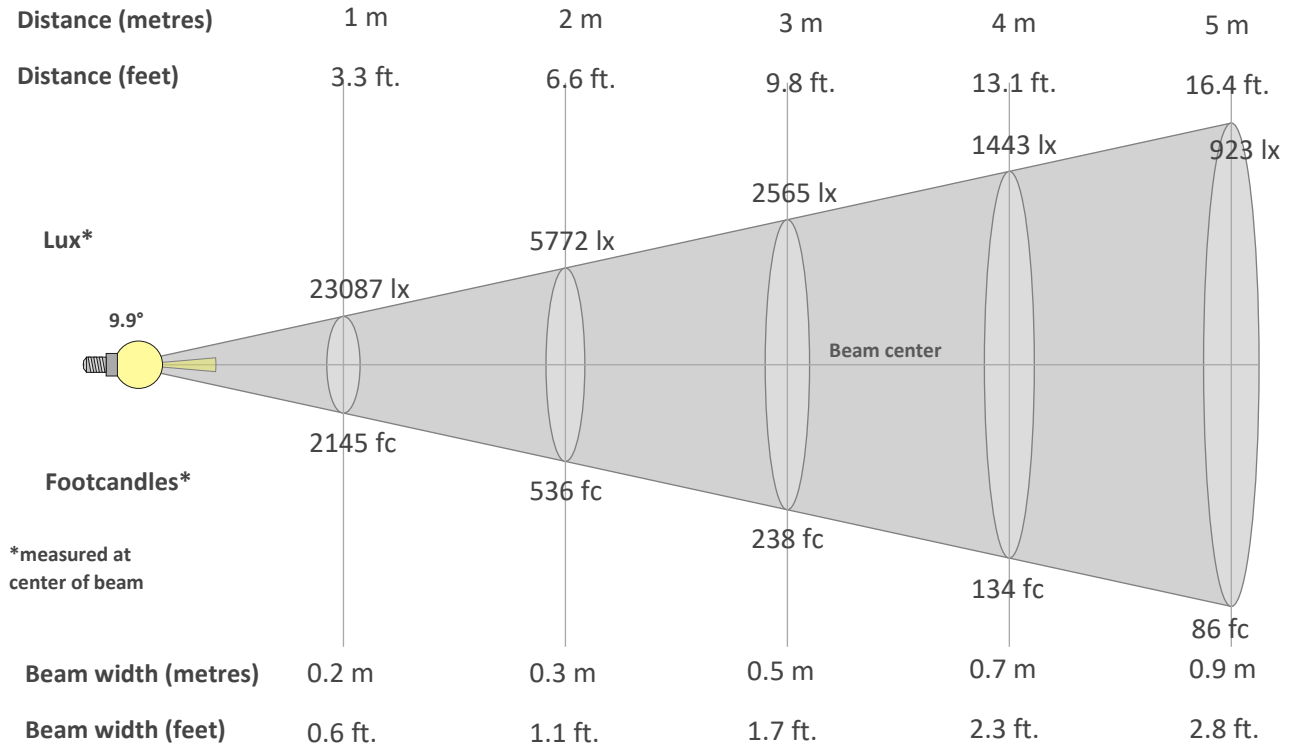
TM30 CHROMA SHIFT



COLOR DISTORTION GRAPHICS



BEAM DETAILS



Beam intensity from 1-20m

1m	2m	3m	4m	5m	6m	7m	8m	9m	10m	11m	12m	13m	14m	15m	16m	17m	18m	19m	20m
3.3ft	6.6ft	9.8ft	13.1ft	16.4ft	19.7ft	23ft	26.2ft	29.5ft	32.8ft	36.1ft	39.4ft	42.7ft	45.9ft	49.2ft	52.5ft	55.8ft	59.1ft	62.3ft	65.6ft
23087lx	5772lx	2565lx	1443lx	923lx	641lx	471lx	361lx	285lx	231lx	191lx	160lx	137lx	118lx	103lx	90lx	80lx	71lx	64lx	58lx
2144.8fc	536.2fc	238.3fc	134.1fc	85.8fc	59.6fc	43.8fc	33.5fc	26.5fc	21.4fc	17.7fc	14.9fc	12.7fc	10.9fc	9.5fc	8.4fc	7.4fc	6.6fc	5.9fc	5.4fc

Intensity in 0° c-plane

0°	1°	2°	3°	4°	5°	6°	7°	8°	9°	10°	11°	12°	13°	14°	15°	16°	17°	18°	19°
23.1K	22.6K	21.0K	17.9K	14.0K	10.4K	7.5K	5.2K	3.5K	2.3K	1.5K	1.1K	0.8K	0.7K	0.6K	0.6K	0.5K	0.4K	0.4K	0.3K
100%	98%	91%	78%	61%	45%	32%	22%	15%	10%	7%	5%	4%	3%	3%	2%	2%	2%	2%	1%

Intensity in 90° c-plane

0°	1°	2°	3°	4°	5°	6°	7°	8°	9°	10°	11°	12°	13°	14°	15°	16°	17°	18°	19°
23.1K	22.5K	20.8K	18.3K	15.4K	12.4K	9.4K	6.9K	4.9K	3.4K	2.4K	1.7K	1.2K	1.0K	0.8K	0.7K	0.6K	0.5K	0.5K	0.4K
100%	97%	90%	79%	67%	54%	41%	30%	21%	15%	10%	7%	5%	4%	3%	3%	3%	2%	2%	2%

Intensity in 180° c-plane

0°	1°	2°	3°	4°	5°	6°	7°	8°	9°	10°	11°	12°	13°	14°	15°	16°	17°	18°	19°
23.1K	22.6K	21.0K	17.9K	14.0K	10.4K	7.5K	5.2K	3.5K	2.3K	1.5K	1.1K	0.8K	0.7K	0.6K	0.6K	0.5K	0.4K	0.4K	0.3K
100%	98%	91%	78%	61%	45%	32%	22%	15%	10%	7%	5%	4%	3%	3%	2%	2%	2%	2%	1%

Intensity in 270° c-plane

0°	1°	2°	3°	4°	5°	6°	7°	8°	9°	10°	11°	12°	13°	14°	15°	16°	17°	18°	19°
23.1K	22.5K	20.8K	18.3K	15.4K	12.4K	9.4K	6.9K	4.9K	3.4K	2.4K	1.7K	1.2K	1.0K	0.8K	0.7K	0.6K	0.5K	0.5K	0.4K
100%	97%	90%	79%	67%	54%	41%	30%	21%	15%	10%	7%	5%	4%	3%	3%	3%	2%	2%	2%