

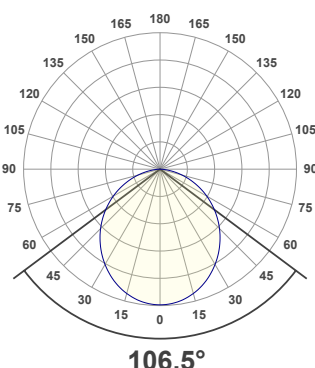
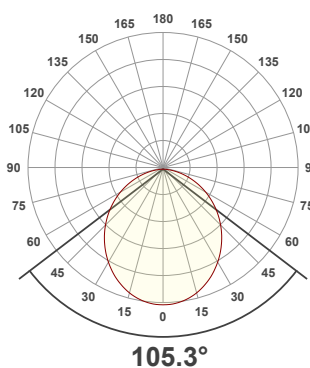


PRODUCT INFORMATION

MEASUREMENT SERIAL NUMBER:	PH-GVA-2024.Apr.09-2963-VO
DATE OF MEASUREMENT:	4/9/2024
MANUFACTURER:	GVA LIGHTING, INC.
PRODUCT NAME:	STR10 ARCHITECTURAL
SIZE (width x length x height):	49 mm x 300 mm x 61 mm
LOT:	sm303D300L2R8000
PROFILE LEGEND:	PIXEL RESOLUTION: R150/200/300 – PIXEL SIZE 150/200/300 mm
INTERNAL ACCESSORIES:	VOLTAGE LEGEND: INF – INFINITY 380 V DC, ELV – 48 V DC
ML – MICRO LOUVER	

ANGULAR DISTRIBUTION AT C0/180

ANGULAR DISTRIBUTION AT C90/270



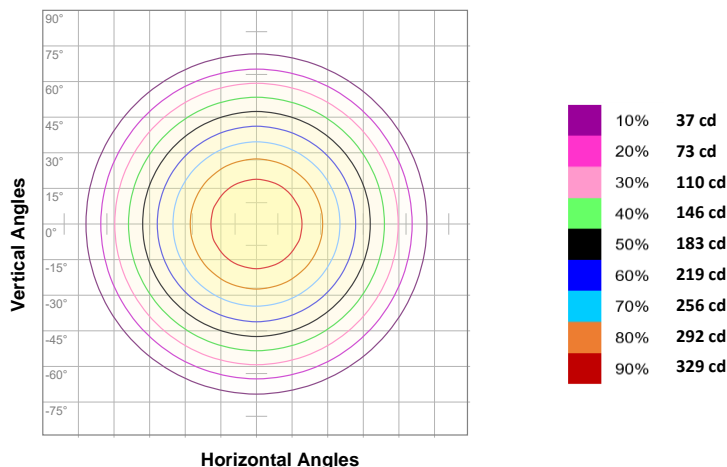
LIGHT OUTPUT DATA

TOTAL LUMEN OUTPUT:	969 lm
EFFICACY:	49 lm/W
PEAK INTENSITY:	366 cd
COLOR RENDERING INDEX (CRI):	80.1
COLOR TEMPERATURE (CCT):	3062K
FIDELITY INDEX (TM30Rf):	82.7
GAMUT INDEX (TM30Rg):	96.4

BEAM OUTPUT DATA

BEAM ANGLE (FWHM) C0/180:	105.3°
BEAM ANGLE (FWHM) C90/270:	106.5°
FIELD ANGLE (10%) C0/180:	159.2°
FIELD ANGLE (10%) C90/270:	159.6°
NUMBER OF PLANES MEASURED:	18

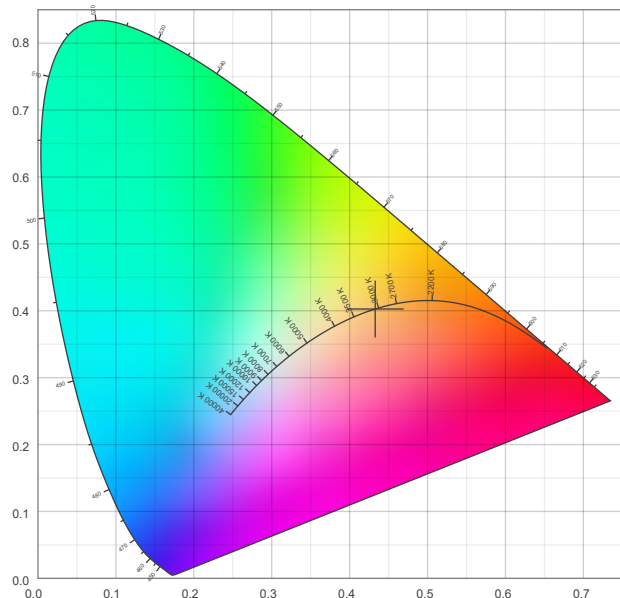
ISOCANDELA DIAGRAM



POWER OUTPUT DATA

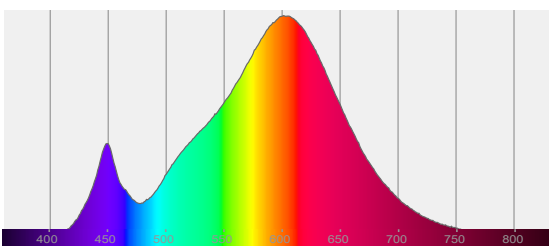
INPUT POWER:	19.9 W
INPUT VOLTAGE:	380 V DC
INPUT CURRENT:	0.052 A
POWER FACTOR:	1.0
OPTICAL POWER:	2.94 mW
PEAK WAVELENGTH:	601 nm
DOMINANT WAVELENGTH:	583 nm

CIE 1931



SPECTRAL DISTRIBUTION

CIE 1931 ZOOM



x: 0.433
y: 0.403
u: 0.249
v: 0.347
Δuv: 0.0005

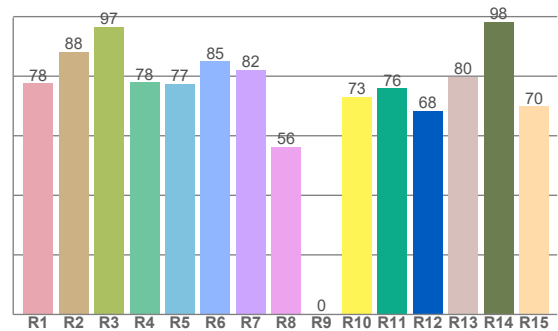
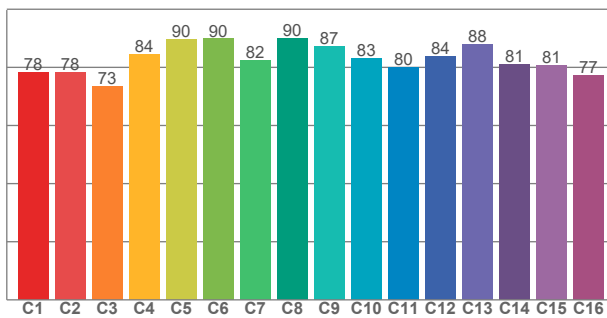
ZONAL LUMEN SUMMARY

0°-10° 34.5 lm	10°-20° 97.7 lm	20°-30° 145 lm	30°-40° 171 lm	40°-50° 173 lm	50°-60° 153 lm	60°-70° 114 lm	70°-80° 64.0 lm	80°-90° 15.3 lm
90°-100° 0.103 lm	100°-110° 0.091 lm	110°-120° 0.041 lm	120°-130° 0.026 lm	130°-140° 0.021 lm	140°-150° 0.016 lm	150°-160° 0.012 lm	160°-170° 0.007 lm	170°-180° 0.002 lm

COLOR DETAILS

TM30: 82.7

CRI: 80.1 (R1-R8)



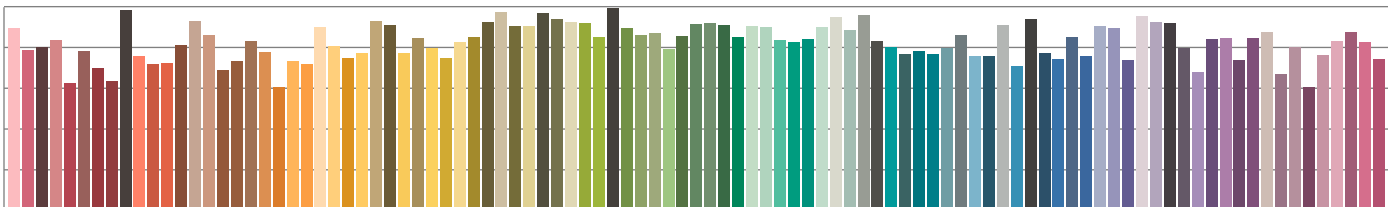
TM30 C values, 16 binned values out of total of 99 C values

CRI R values, only R1-R8 are used to calculate final CRI value

C1	C2	C3	C4	C5	C6	C7	C8	C9	C10	C11	C12	C13	C14	C15	C16
78.3	78.4	73.4	84.3	89.5	89.8	82.3	89.9	87.1	83.3	80.0	83.9	87.8	80.9	80.8	77.4

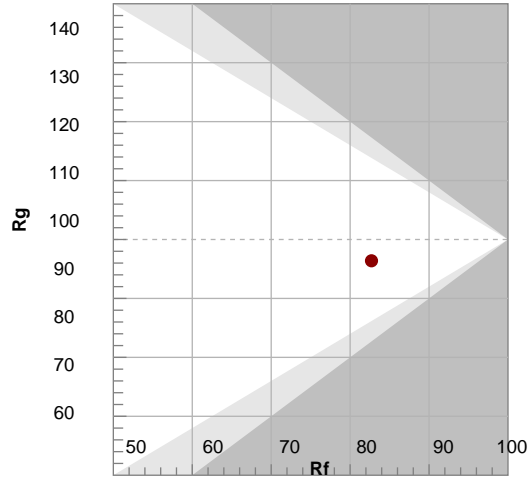
R1	R2	R3	R4	R5	R6	R7	R8	R9	R10	R11	R12	R13	R14	R15
77.6	88.1	96.6	77.9	77.3	84.9	82.2	56.1	0.2	73.0	75.9	68.4	79.7	98.2	69.8

TM30 COLOR EVALUATION SAMPLE



TM30 DETAILS

Color	R1	R2	R3	R4	R5	R6	R7	R8	R9	R10	R11	R12	R13	R14	R15
Red	78	88	97	78	77	85	82	56	0	73	76	68	80	98	70



FIDELITY INDEX

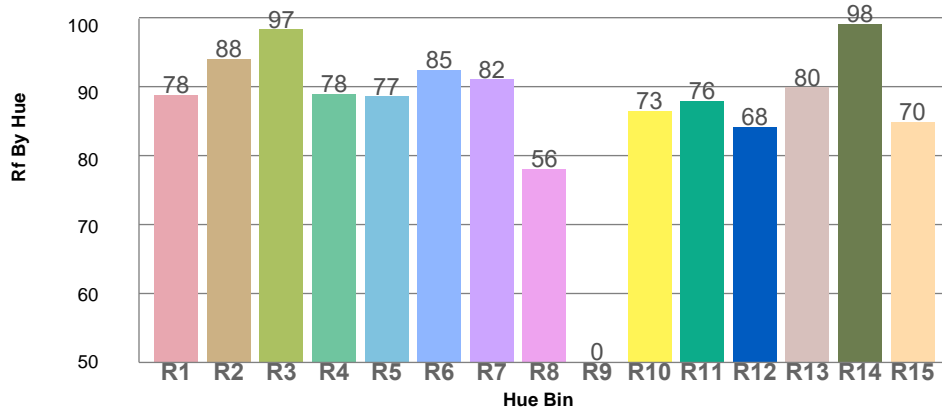
Rf 82.7

GAMUT INDEX

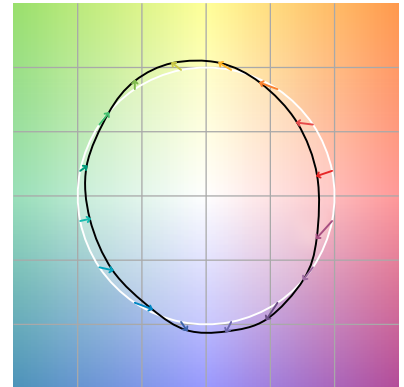
Rg 96.4

Approx. limits for sources on the Planckian locus.
Approx. limits for practical light sources.

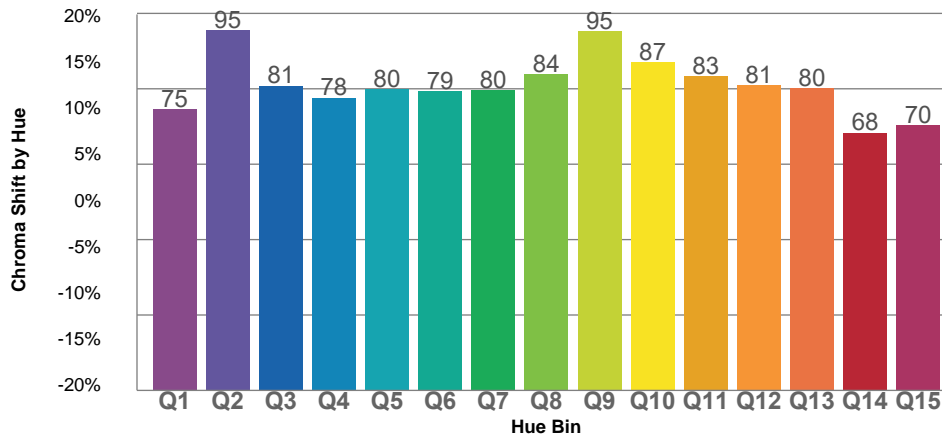
TM30 OVER 50



COLOR VECTOR GRAPHICS



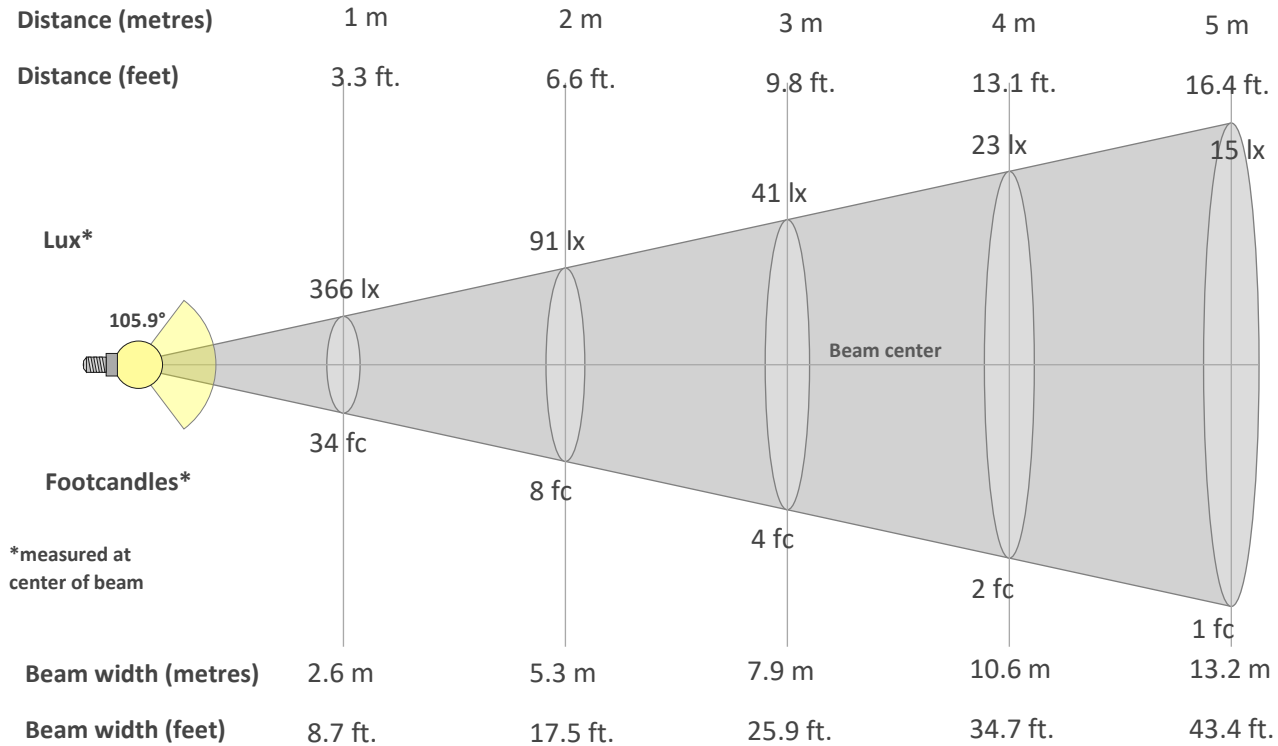
TM30 CHROMA SHIFT



COLOR DISTORTION GRAPHICS



BEAM DETAILS



Beam intensity from 1-20m

1m	2m	3m	4m	5m	6m	7m	8m	9m	10m	11m	12m	13m	14m	15m	16m	17m	18m	19m	20m
3.3ft	6.6ft	9.8ft	13.1ft	16.4ft	19.7ft	23ft	26.2ft	29.5ft	32.8ft	36.1ft	39.4ft	42.7ft	45.9ft	49.2ft	52.5ft	55.8ft	59.1ft	62.3ft	65.6ft
366lx	91lx	41lx	23lx	15lx	10lx	7lx	6lx	5lx	4lx	3lx	3lx	2lx	2lx	2lx	1lx	1lx	1lx	1lx	1lx
34fc	8.5fc	3.8fc	2.1fc	1.4fc	0.9fc	0.7fc	0.5fc	0.4fc	0.3fc	0.3fc	0.2fc	0.2fc	0.2fc	0.2fc	0.1fc	0.1fc	0.1fc	0.1fc	0.1fc

Intensity in 0° c-plane

0°	5°	10°	15°	20°	25°	30°	35°	40°	45°	50°	55°	60°	65°	70°	75°	80°	85°	90°	95°
366	364	357	347	332	315	294	272	248	223	197	170	143	115	87	60	35	13	0	0
100%	99%	98%	95%	91%	86%	81%	74%	68%	61%	54%	47%	39%	31%	24%	16%	10%	4%	0%	0%

Intensity in 90° c-plane

0°	5°	10°	15°	20°	25°	30°	35°	40°	45°	50°	55°	60°	65°	70°	75°	80°	85°	90°	95°
366	363	357	347	333	316	296	275	251	227	200	173	146	117	89	61	36	13	0	0
100%	99%	98%	95%	91%	86%	81%	75%	69%	62%	55%	47%	40%	32%	24%	17%	10%	4%	0%	0%

Intensity in 180° c-plane

0°	5°	10°	15°	20°	25°	30°	35°	40°	45°	50°	55°	60°	65°	70°	75°	80°	85°	90°	95°
366	364	357	347	332	315	294	272	248	223	197	170	143	115	87	60	35	13	0	0
100%	99%	98%	95%	91%	86%	81%	74%	68%	61%	54%	47%	39%	31%	24%	16%	10%	4%	0%	0%

Intensity in 270° c-plane

0°	5°	10°	15°	20°	25°	30°	35°	40°	45°	50°	55°	60°	65°	70°	75°	80°	85°	90°	95°
366	363	357	347	333	316	296	275	251	227	200	173	146	117	89	61	36	13	0	0
100%	99%	98%	95%	91%	86%	81%	75%	69%	62%	55%	47%	40%	32%	24%	17%	10%	4%	0%	0%