

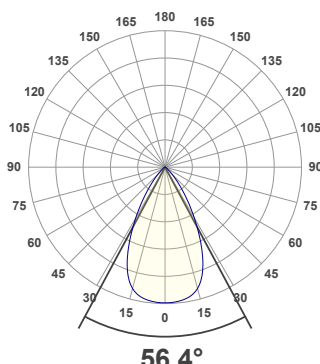
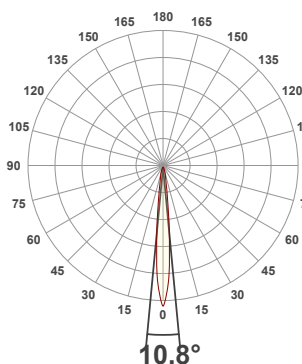


**PRODUCT INFORMATION**

MEASUREMENT SERIAL NUMBER:	PH-GVA-2024.Feb.22-2694-VO
DATE OF MEASUREMENT:	2/22/2024
MANUFACTURER:	GVA LIGHTING, INC.
PRODUCT NAME:	STR10 ARCHITECTURAL
SIZE (width x length x height):	49 mm x 300 mm x 61 mm
LOT:	sm303D300L2R8000
PROFILE LEGEND:	PIXEL RESOLUTION: R150/200/300 – PIXEL SIZE 150/200/300 mm
CM – CLEAR MATTE, BM – BLACK MATTE, CU – CUSTOM COLOR	VOLTAGE LEGEND: INF – INFINITY 380 V DC, ELV – 48 V DC
INTERNAL ACCESSORIES: NL – NO LOUVER, ML – MICRO LOUVER	

**ANGULAR DISTRIBUTION AT C0/180**

**ANGULAR DISTRIBUTION AT C90/270**



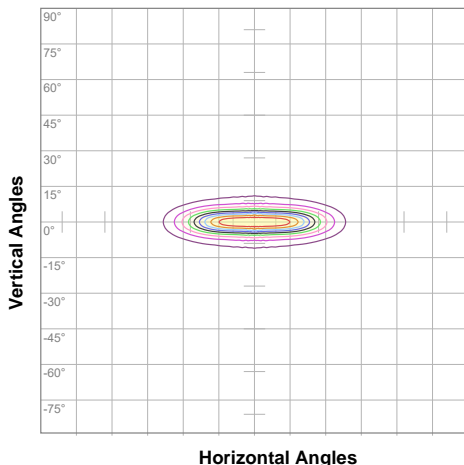
**LIGHT OUTPUT DATA**

TOTAL LUMEN OUTPUT:	1044 lm
EFFICACY:	53 lm/W
PEAK INTENSITY:	4256 cd
COLOR RENDERING INDEX (CRI):	84.5
COLOR TEMPERATURE (CCT):	3053K
FIDELITY INDEX (TM30Rf):	84.7
GAMUT INDEX (TM30Rg):	95.7

**BEAM OUTPUT DATA**

BEAM ANGLE (FWHM)   C0/180:	10.8°
BEAM ANGLE (FWHM)   C90/270:	56.4°
FIELD ANGLE (10%)   C0/180:	24.8°
FIELD ANGLE (10%)   C90/270:	85.7°
NUMBER OF PLANES MEASURED:	36

**ISOCANDELA DIAGRAM**

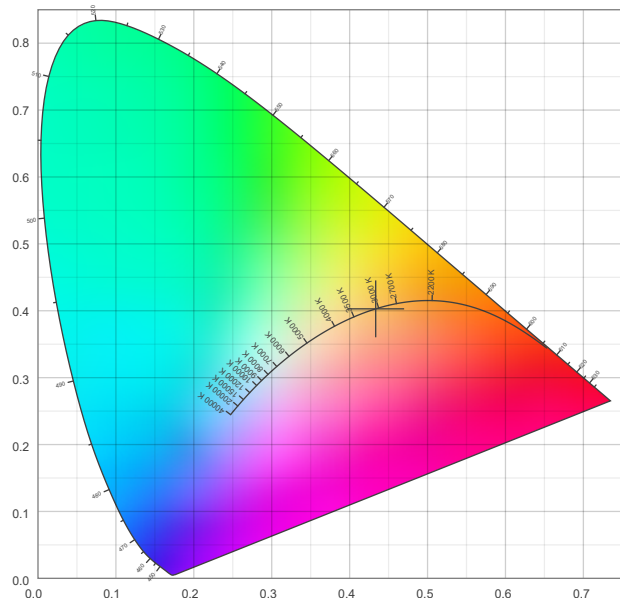


10%	417 cd
20%	834 cd
30%	1251 cd
40%	1668 cd
50%	2084 cd
60%	2501 cd
70%	2918 cd
80%	3335 cd
90%	3752 cd

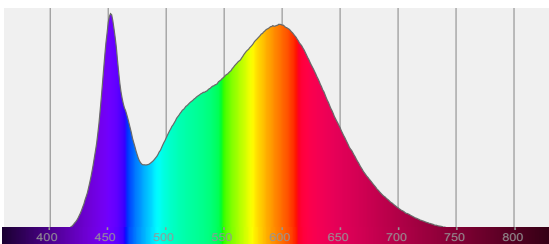
**POWER OUTPUT DATA**

INPUT POWER:	19.6 W
INPUT VOLTAGE:	380 V DC
INPUT CURRENT:	0.052 A
POWER FACTOR:	1.0
OPTICAL POWER:	3.19 mW
PEAK WAVELENGTH:	452 nm
DOMINANT WAVELENGTH:	583 nm

**CIE 1931**



**SPECTRAL DISTRIBUTION**



**CIE 1931 ZOOM**

x:	0.433
y:	0.403
u:	0.249
v:	0.347
Δuv:	-0.0024

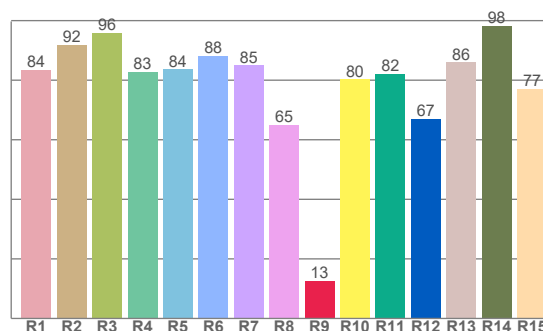
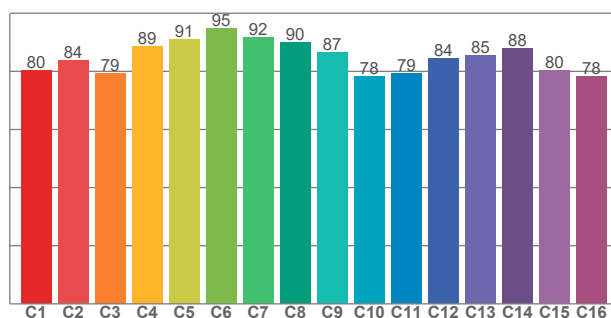
ZONAL LUMEN SUMMARY

0°-10° 253 lm	10°-20° 323 lm	20°-30° 243 lm	30°-40° 132 lm	40°-50° 58.5 lm	50°-60° 24.7 lm	60°-70° 9.09 lm	70°-80° 1.20 lm	80°-90° 0.011 lm
90°-100° 0.000 lm	100°-110° 0.000 lm	110°-120° 0.000 lm	120°-130° 0.000 lm	130°-140° 0.000 lm	140°-150° 0.000 lm	150°-160° 0.000 lm	160°-170° 0.000 lm	170°-180° 0.000 lm

COLOR DETAILS

TM30: 84.7

CRI: 84.5 (R1-R8)



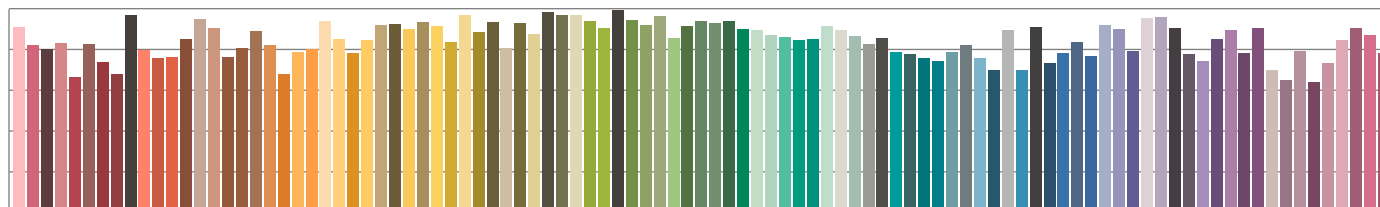
TM30 C values, 16 binned values out of total of 99 C values

CRI R values, only R1-R8 are used to calculate final CRI value

C1	C2	C3	C4	C5	C6	C7	C8	C9	C10	C11	C12	C13	C14	C15	C16
80.5	83.7	79.2	88.7	91.0	94.7	91.5	89.8	86.6	78.4	79.2	84.3	85.4	87.9	80.4	78.3

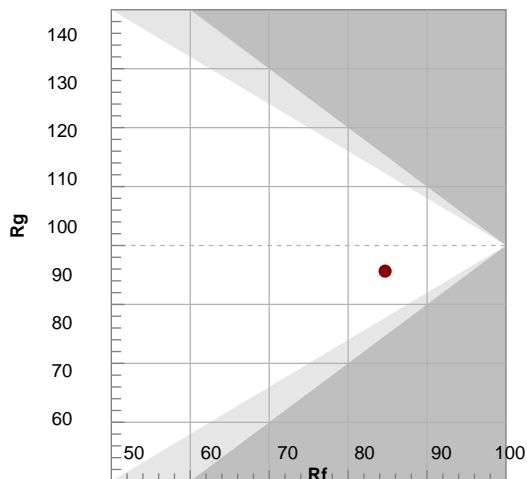
R1	R2	R3	R4	R5	R6	R7	R8	R9	R10	R11	R12	R13	R14	R15
83.5	92.0	95.8	82.8	83.6	88.2	85.0	64.9	12.7	80.3	82.1	66.9	86.0	98.3	77.1

TM30 COLOR EVALUATION SAMPLE



TM30 DETAILS

Bin	Color	Rf	Rg	Ra
1	Red	84	92	96
2	Orange	83	84	88
3	Yellow	85	65	13
4	Green	80	82	67
5	Cyan	86	98	77
6	Blue	82	84	81
7	Teal	84	86	89
8	Light Green	89	98	89
9	Yellow-Green	85	83	83
10	Yellow	83	83	73
11	Orange	83	83	76
12	Red-Orange	73	76	
13	Red			
14	Red-Orange			
15	Orange			



FIDELITY INDEX

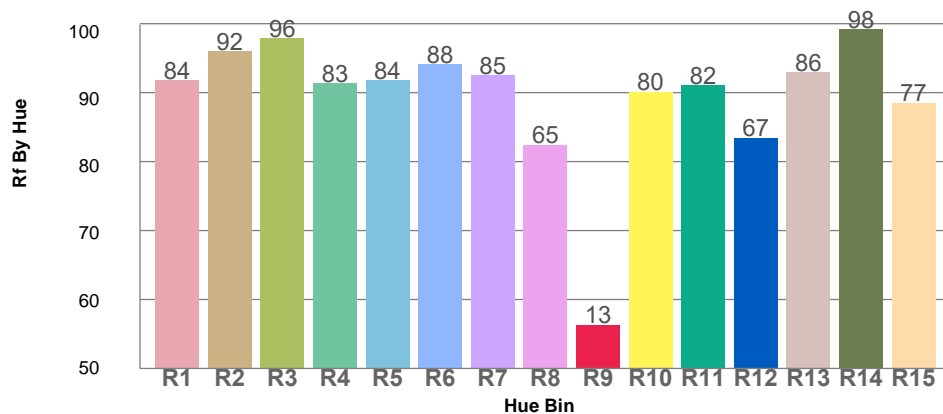
**Rf 84.7**

GAMUT INDEX

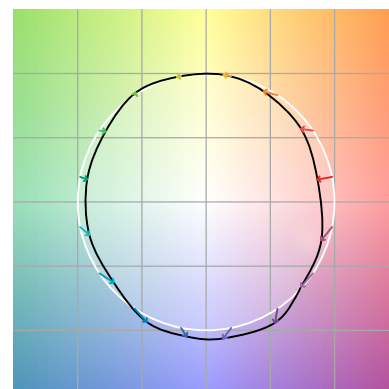
**Rg 95.7**

Approx. limits for sources on the Planckian locus.  
 Approx. limits for practical light sources.

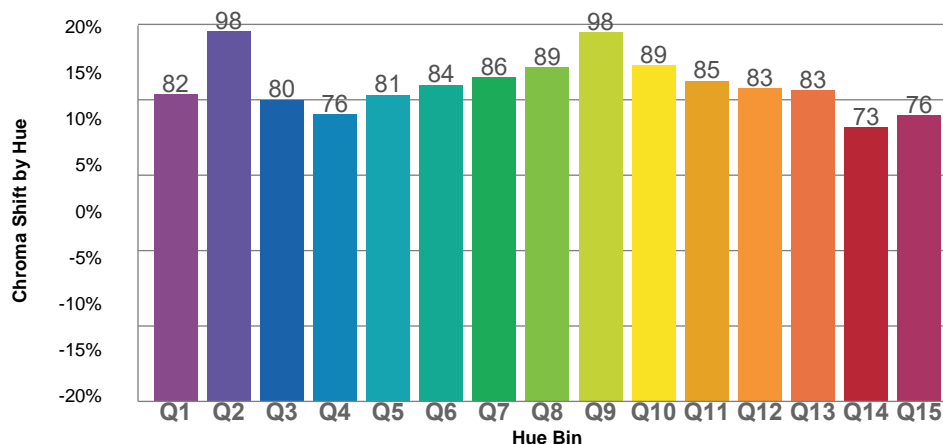
TM30 OVER 50



COLOR VECTOR GRAPHICS



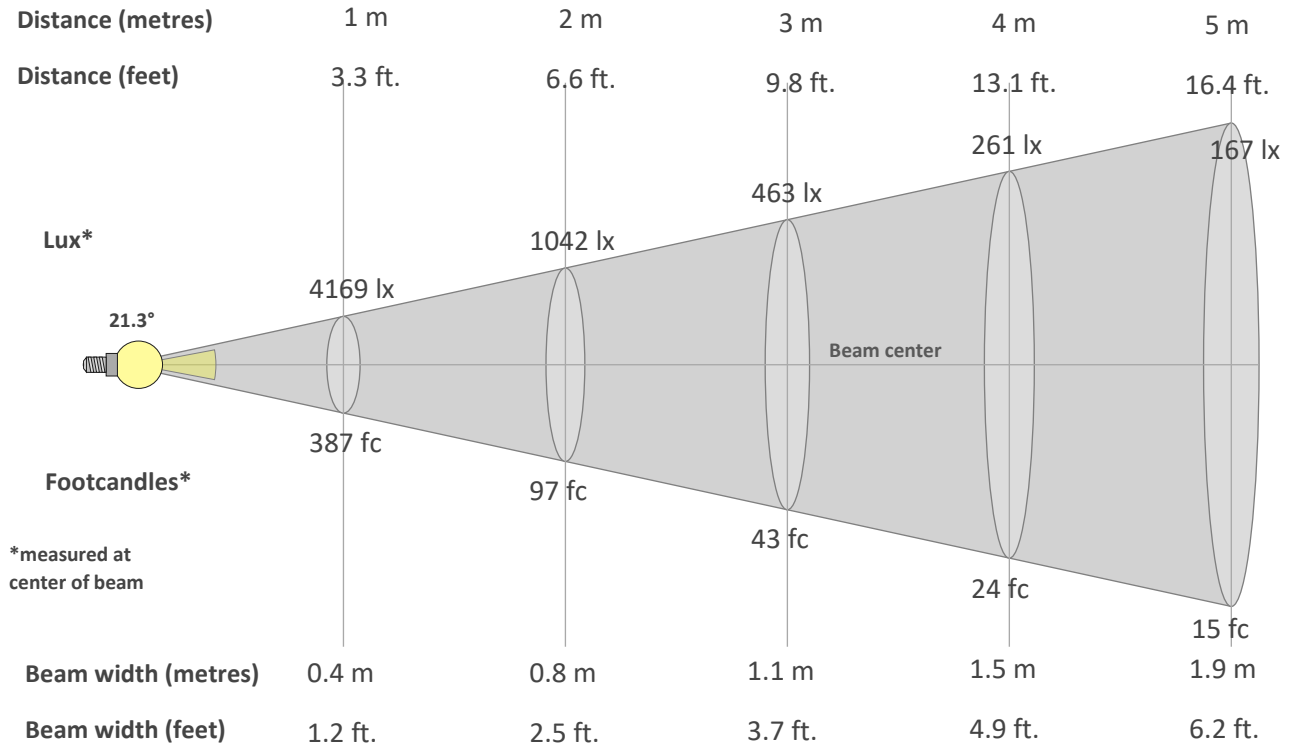
TM30 CHROMA SHIFT



COLOR DISTORTION GRAPHICS



**BEAM DETAILS**



**Beam intensity from 1-20m**

1m	2m	3m	4m	5m	6m	7m	8m	9m	10m	11m	12m	13m	14m	15m	16m	17m	18m	19m	20m
3.3ft	6.6ft	9.8ft	13.1ft	16.4ft	19.7ft	23ft	26.2ft	29.5ft	32.8ft	36.1ft	39.4ft	42.7ft	45.9ft	49.2ft	52.5ft	55.8ft	59.1ft	62.3ft	65.6ft
4169lx	1042lx	463lx	261lx	167lx	116lx	85lx	65lx	51lx	42lx	34lx	29lx	25lx	21lx	19lx	16lx	14lx	13lx	12lx	10lx
387.3fc	96.8fc	43fc	24.2fc	15.5fc	10.8fc	7.9fc	6.1fc	4.8fc	3.9fc	3.2fc	2.7fc	2.3fc	2fc	1.7fc	1.5fc	1.3fc	1.2fc	1.1fc	1fc

**Intensity in 0° c-plane**

0°	2°	4°	6°	8°	10°	12°	14°	16°	18°	20°	22°	24°	26°	28°	30°	32°	34°	36°	38°
4169	3667	2826	1790	1029	644	436	329	266	218	177	143	116	95	80	68	58	50	41	35
100%	88%	68%	43%	25%	15%	10%	8%	6%	5%	4%	3%	3%	2%	2%	2%	1%	1%	1%	1%

**Intensity in 90° c-plane**

0°	2°	4°	6°	8°	10°	12°	14°	16°	18°	20°	22°	24°	26°	28°	30°	32°	34°	36°	38°
4169	4182	4171	4152	4123	4082	4023	3929	3793	3612	3385	3112	2794	2459	2126	1805	1506	1239	1003	794
100%	100%	100%	100%	99%	98%	96%	94%	91%	87%	81%	75%	67%	59%	51%	43%	36%	30%	24%	19%

**Intensity in 180° c-plane**

0°	2°	4°	6°	8°	10°	12°	14°	16°	18°	20°	22°	24°	26°	28°	30°	32°	34°	36°	38°
4169	3667	2826	1790	1029	644	436	329	266	218	177	143	116	95	80	68	58	50	41	35
100%	88%	68%	43%	25%	15%	10%	8%	6%	5%	4%	3%	3%	2%	2%	2%	1%	1%	1%	1%

**Intensity in 270° c-plane**

0°	2°	4°	6°	8°	10°	12°	14°	16°	18°	20°	22°	24°	26°	28°	30°	32°	34°	36°	38°
4169	4182	4171	4152	4123	4082	4023	3929	3793	3612	3385	3112	2794	2459	2126	1805	1506	1239	1003	794
100%	100%	100%	100%	99%	98%	96%	94%	91%	87%	81%	75%	67%	59%	51%	43%	36%	30%	24%	19%