

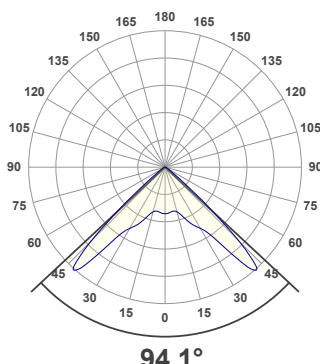
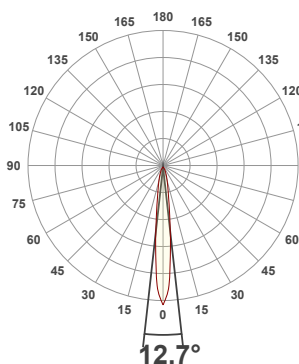


PRODUCT INFORMATION

MEASUREMENT SERIAL NUMBER:	PH-GVA-2024.Feb.22-2690-VO
DATE OF MEASUREMENT:	2/22/2024
MANUFACTURER:	GVA LIGHTING, INC.
PRODUCT NAME:	STR10 ARCHITECTURAL
SIZE (width x length x height):	49 mm x 300 mm x 61 mm
LOT:	sm303D300L2R8000
PROFILE LEGEND:	PIXEL RESOLUTION: CM – CLEAR MATTE, BM – BLACK MATTE, CU – CUSTOM COLOR
INTERNAL ACCESSORIES:	R150/200/300 – PIXEL SIZE 150/200/300 mm
NL – NO LOUVER, ML – MICRO LOUVER	VOLTAGE LEGEND: INF – INFINITY 380 V DC, ELV – 48 V DC

ANGULAR DISTRIBUTION AT C0/180

ANGULAR DISTRIBUTION AT C90/270



LIGHT OUTPUT DATA

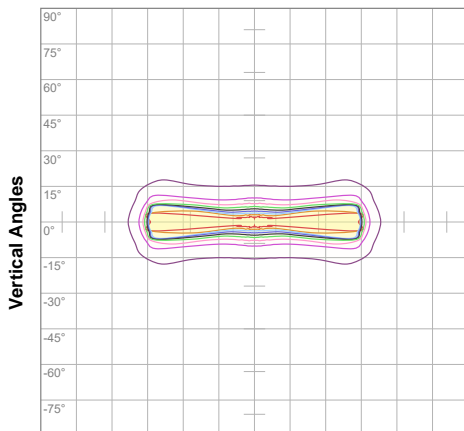
TOTAL LUMEN OUTPUT:	947 lm
EFFICACY:	48 lm/W
PEAK INTENSITY:	4117 cd
COLOR RENDERING INDEX (CRI):	84.1
COLOR TEMPERATURE (CCT):	3056K
FIDELITY INDEX (TM30Rf):	84.3
GAMUT INDEX (TM30Rg):	95.6

BEAM OUTPUT DATA

BEAM ANGLE (FWHM) C0/180:	12.7°
BEAM ANGLE (FWHM) C90/270:	94.1°
FIELD ANGLE (10%) C0/180:	35.1°
FIELD ANGLE (10%) C90/270:	104.6°
NUMBER OF PLANES MEASURED:	36

ISOCANDELA DIAGRAM

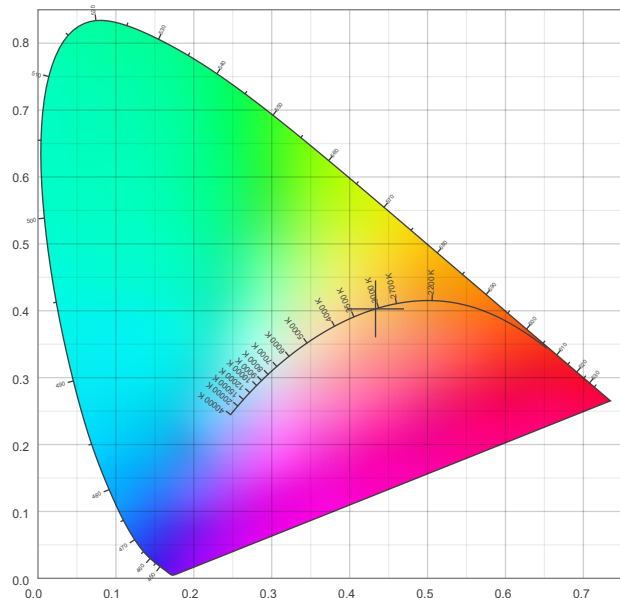
POWER OUTPUT DATA



10%	142 cd
20%	284 cd
30%	427 cd
40%	569 cd
50%	711 cd
60%	853 cd
70%	996 cd
80%	1138 cd
90%	1280 cd

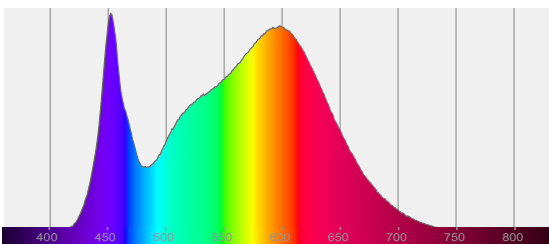
INPUT POWER:	19.9 W
INPUT VOLTAGE:	380 V DC
INPUT CURRENT:	0.052 A
POWER FACTOR:	1.0
OPTICAL POWER:	2.88 mW
PEAK WAVELENGTH:	452 nm
DOMINANT WAVELENGTH:	583 nm

CIE 1931



SPECTRAL DISTRIBUTION

CIE 1931 ZOOM



x:	0.433
y:	0.403
u:	0.249
v:	0.347
Δuv:	-0.0029

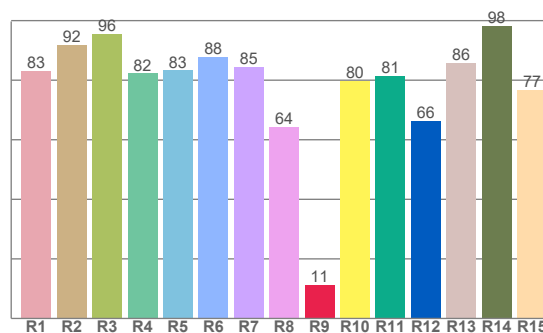
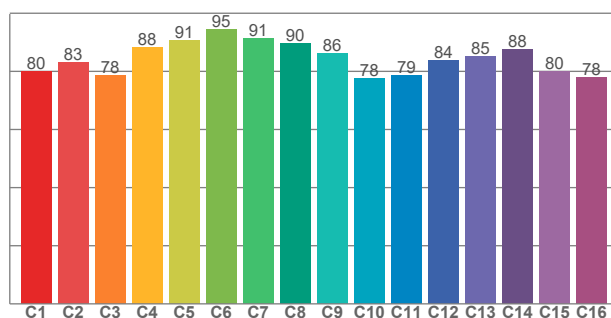
ZONAL LUMEN SUMMARY

0°-10° 91.2 lm	10°-20° 141 lm	20°-30° 172 lm	30°-40° 230 lm	40°-50° 235 lm	50°-60° 55.6 lm	60°-70° 18.7 lm	70°-80° 2.95 lm	80°-90° 0.008 lm
90°-100° 0.000 lm	100°-110° 0.000 lm	110°-120° 0.000 lm	120°-130° 0.000 lm	130°-140° 0.000 lm	140°-150° 0.000 lm	150°-160° 0.000 lm	160°-170° 0.000 lm	170°-180° 0.000 lm

COLOR DETAILS

TM30: 84.3

CRI: 84.1 (R1-R8)



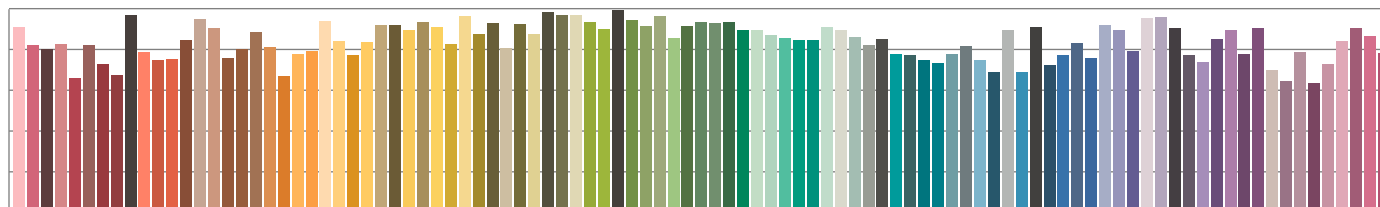
TM30 C values, 16 binned values out of total of 99 C values

CRI R values, only R1-R8 are used to calculate final CRI value

C1	C2	C3	C4	C5	C6	C7	C8	C9	C10	C11	C12	C13	C14	C15	C16
80.0	83.2	78.5	88.2	90.7	94.5	91.3	89.6	86.3	77.6	78.6	83.9	85.2	87.7	80.2	77.9

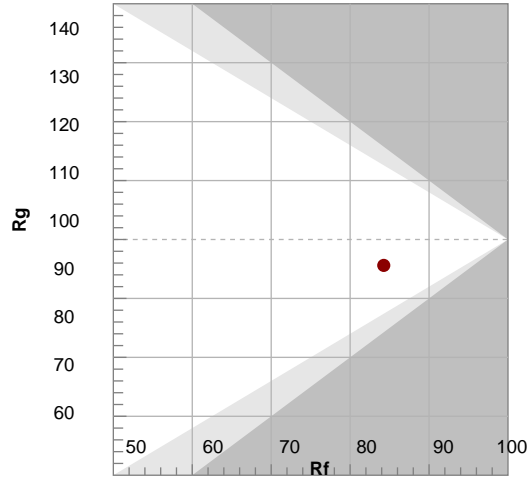
R1	R2	R3	R4	R5	R6	R7	R8	R9	R10	R11	R12	R13	R14	R15
83.2	91.8	95.6	82.3	83.2	87.9	84.6	64.2	11.2	79.9	81.4	66.3	85.7	98.2	76.8

TM30 COLOR EVALUATION SAMPLE



TM30 DETAILS

Bin	Color	Rf	Chroma Shift
1	Red	83	81
2	Orange	92	98
3	Yellow	96	98
4	Green	82	86
5	Teal	83	83
6	Blue	88	81
7	Purple	85	79
8	Pink	64	75
9	Red	11	72
10	Yellow	80	89
11	Green	81	88
12	Blue	66	84
13	Orange	86	82
14	Yellow	98	82
15	Orange	77	75



FIDELITY INDEX

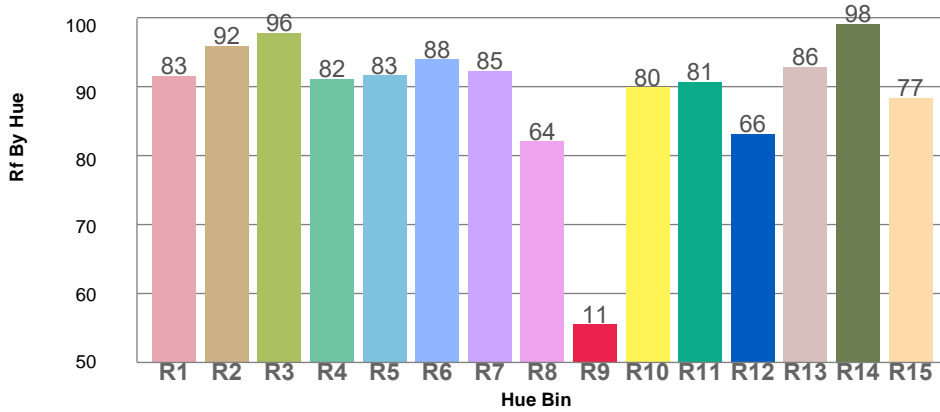
Rf 84.3

GAMUT INDEX

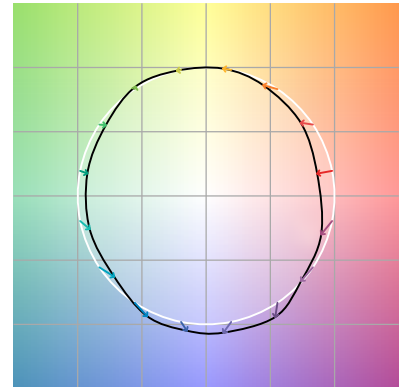
Rg 95.6

Approx. limits for sources on the Planckian locus.
Approx. limits for practical light sources.

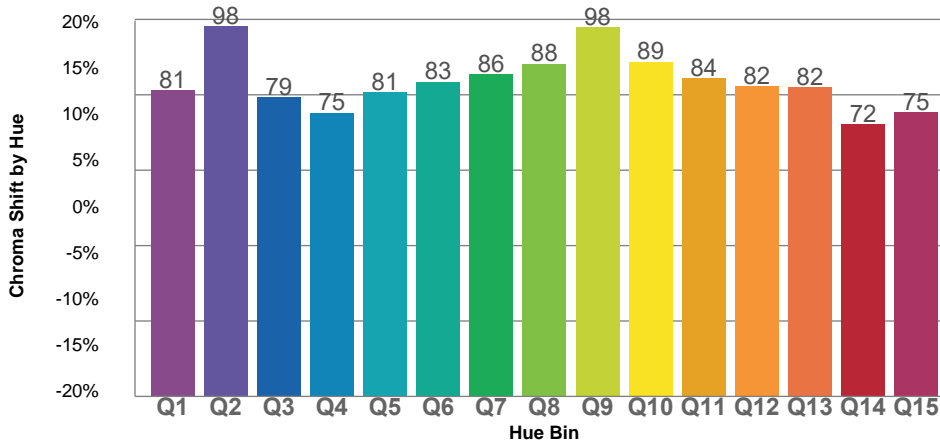
TM30 OVER 50



COLOR VECTOR GRAPHICS



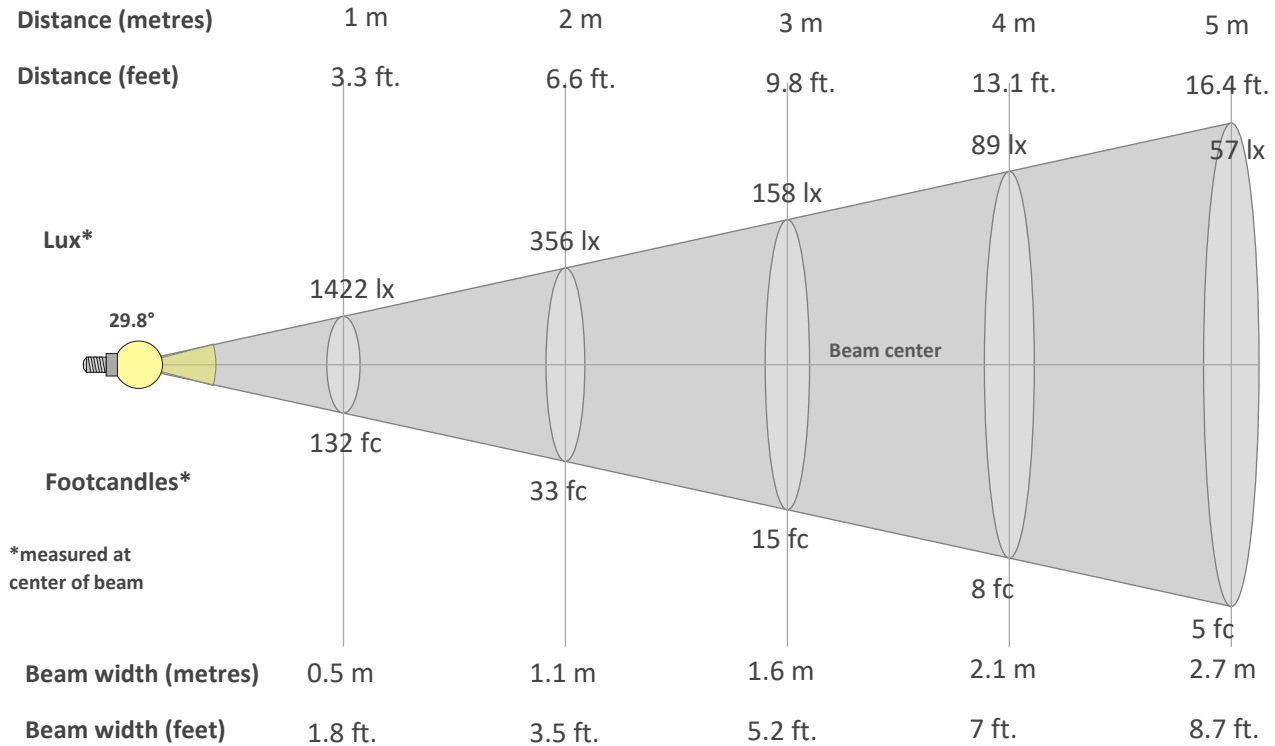
TM30 CHROMA SHIFT



COLOR DISTORTION GRAPHICS



BEAM DETAILS



Beam intensity from 1-20m

1m	2m	3m	4m	5m	6m	7m	8m	9m	10m	11m	12m	13m	14m	15m	16m	17m	18m	19m	20m
3.3ft	6.6ft	9.8ft	13.1ft	16.4ft	19.7ft	23ft	26.2ft	29.5ft	32.8ft	36.1ft	39.4ft	42.7ft	45.9ft	49.2ft	52.5ft	55.8ft	59.1ft	62.3ft	65.6ft
1422lx	356lx	158lx	89lx	57lx	40lx	29lx	22lx	18lx	14lx	12lx	10lx	8lx	7lx	6lx	6lx	5lx	4lx	4lx	4lx
132.1fc	33fc	14.7fc	8.3fc	5.3fc	3.7fc	2.7fc	2.1fc	1.6fc	1.3fc	1.1fc	0.9fc	0.8fc	0.7fc	0.6fc	0.5fc	0.5fc	0.4fc	0.4fc	0.3fc

Intensity in 0° c-plane

0°	2°	4°	6°	8°	10°	12°	14°	16°	18°	20°	22°	24°	26°	28°	30°	32°	34°	36°	38°
1422	1264	1028	732	489	346	258	201	162	131	108	90	74	62	52	45	38	32	27	22
100%	89%	72%	51%	34%	24%	18%	14%	11%	9%	8%	6%	5%	4%	4%	3%	3%	2%	2%	2%

Intensity in 90° c-plane

0°	2°	4°	6°	8°	10°	12°	14°	16°	18°	20°	22°	24°	26°	28°	30°	32°	34°	36°	38°
1422	1410	1399	1384	1369	1359	1365	1389	1436	1507	1602	1721	1840	1950	2051	2150	2283	2524	2924	3453
100%	99%	98%	97%	96%	96%	96%	98%	101%	106%	113%	121%	129%	137%	144%	151%	161%	177%	206%	243%

Intensity in 180° c-plane

0°	2°	4°	6°	8°	10°	12°	14°	16°	18°	20°	22°	24°	26°	28°	30°	32°	34°	36°	38°
1422	1264	1028	732	489	346	258	201	162	131	108	90	74	62	52	45	38	32	27	22
100%	89%	72%	51%	34%	24%	18%	14%	11%	9%	8%	6%	5%	4%	4%	3%	3%	2%	2%	2%

Intensity in 270° c-plane

0°	2°	4°	6°	8°	10°	12°	14°	16°	18°	20°	22°	24°	26°	28°	30°	32°	34°	36°	38°
1422	1410	1399	1384	1369	1359	1365	1389	1436	1507	1602	1721	1840	1950	2051	2150	2283	2524	2924	3453
100%	99%	98%	97%	96%	96%	96%	98%	101%	106%	113%	121%	129%	137%	144%	151%	161%	177%	206%	243%