

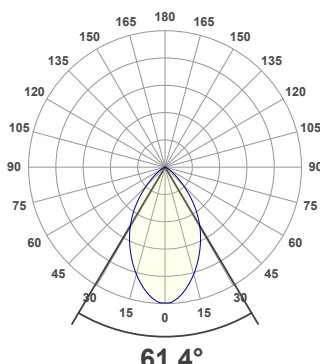
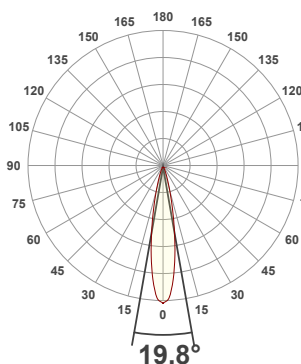


PRODUCT INFORMATION

MEASUREMENT SERIAL NUMBER:	PH-GVA-2024.Apr.26-3091-VO
DATE OF MEASUREMENT:	4/26/2024
MANUFACTURER:	GVA LIGHTING, INC.
PRODUCT NAME:	STR10 ARCHITECTURAL
SIZE (width x length x height):	49 mm x 300 mm x 61 mm
LOT:	sm303D300L2R8000
PROFILE LEGEND:	PIXEL RESOLUTION: CM – CLEAR MATTE, BM – BLACK MATTE, CU – CUSTOM COLOR
INTERNAL ACCESSORIES:	R150/200/300 – PIXEL SIZE 150/200/300 mm VOLTAGE LEGEND: INF – INFINITY 380 V DC, NL – NO LOUVER, ML – MICRO LOUVER ELV – 48 V DC

ANGULAR DISTRIBUTION AT C0/180

ANGULAR DISTRIBUTION AT C90/270



LIGHT OUTPUT DATA

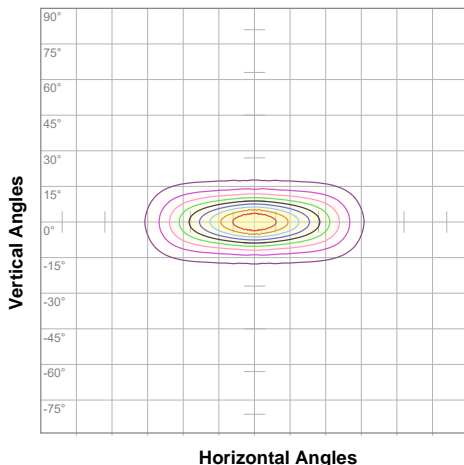
TOTAL LUMEN OUTPUT:	987 lm
EFFICACY:	50 lm/W
PEAK INTENSITY:	2199 cd
COLOR RENDERING INDEX (CRI):	80.1
COLOR TEMPERATURE (CCT):	3004K
FIDELITY INDEX (TM30Rf):	82.7
GAMUT INDEX (TM30Rg):	96.2

BEAM OUTPUT DATA

BEAM ANGLE (FWHM) C0/180:	19.8°
BEAM ANGLE (FWHM) C90/270:	61.4°
FIELD ANGLE (10%) C0/180:	39.4°
FIELD ANGLE (10%) C90/270:	102.7°
NUMBER OF PLANES MEASURED:	36

ISOCANDELA DIAGRAM

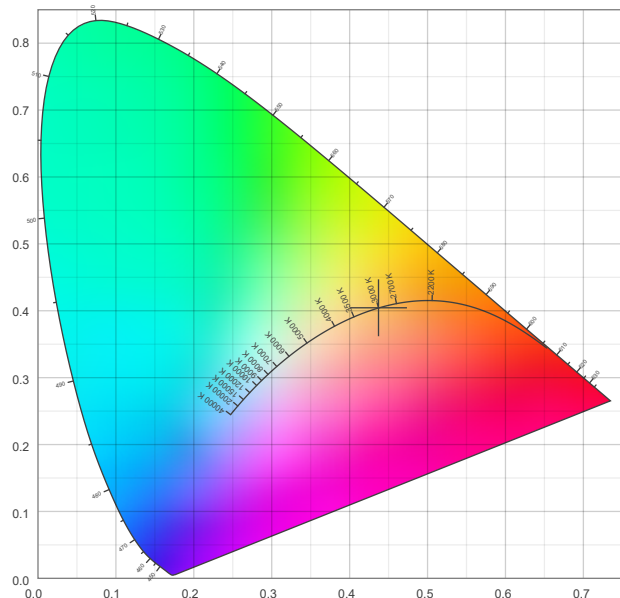
POWER OUTPUT DATA



10%	219 cd
20%	438 cd
30%	657 cd
40%	876 cd
50%	1094 cd
60%	1313 cd
70%	1532 cd
80%	1751 cd
90%	1970 cd

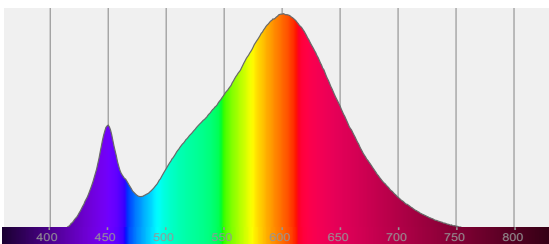
INPUT POWER:	19.9 W
INPUT VOLTAGE:	380 V DC
INPUT CURRENT:	0.052 A
POWER FACTOR:	1.0
OPTICAL POWER:	2.99 mW
PEAK WAVELENGTH:	601 nm
DOMINANT WAVELENGTH:	583 nm

CIE 1931



SPECTRAL DISTRIBUTION

CIE 1931 ZOOM



x:	0.437
y:	0.404
u:	0.250
v:	0.348
Δuv:	0.0002

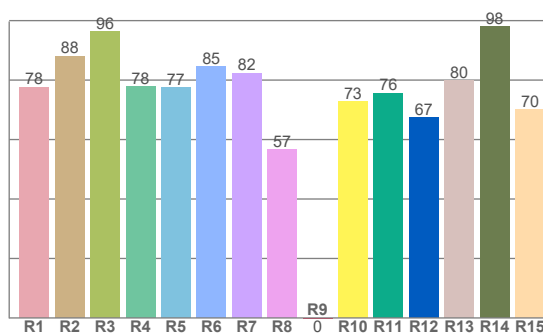
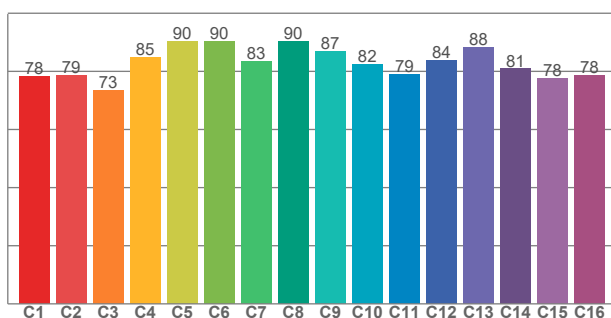
ZONAL LUMEN SUMMARY

0°-10° 172 lm	10°-20° 282 lm	20°-30° 226 lm	30°-40° 160 lm	40°-50° 90.5 lm	50°-60° 39.6 lm	60°-70° 14.5 lm	70°-80° 3.24 lm	80°-90° 0.063 lm
90°-100° 0.000 lm	100°-110° 0.000 lm	110°-120° 0.000 lm	120°-130° 0.000 lm	130°-140° 0.000 lm	140°-150° 0.000 lm	150°-160° 0.000 lm	160°-170° 0.000 lm	170°-180° 0.000 lm

COLOR DETAILS

TM30: 82.7

CRI: 80.1 (R1-R8)



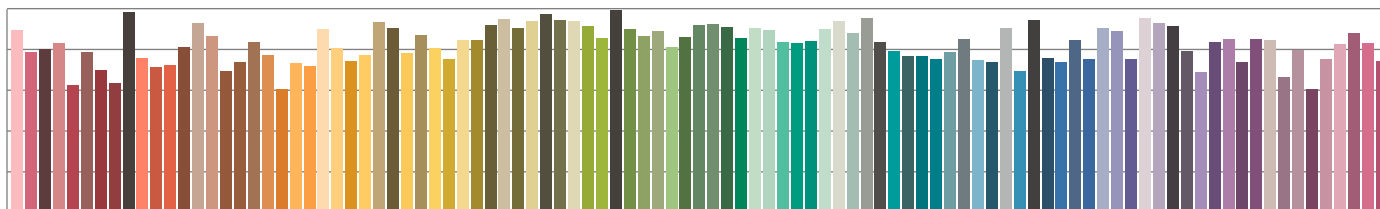
TM30 C values, 16 binned values out of total of 99 C values

CRI R values, only R1-R8 are used to calculate final CRI value

C1	C2	C3	C4	C5	C6	C7	C8	C9	C10	C11	C12	C13	C14	C15	C16
78.3	78.5	73.4	84.7	90.2	90.4	83.5	90.2	87.0	82.3	79.0	83.7	88.1	80.9	77.7	78.5

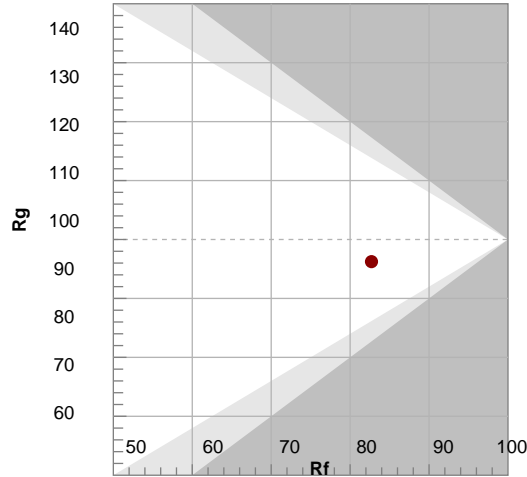
R1	R2	R3	R4	R5	R6	R7	R8	R9	R10	R11	R12	R13	R14	R15
77.7	88.1	96.3	77.9	77.4	84.6	82.4	56.6	-0.2	72.7	75.7	67.3	79.8	98.1	70.0

TM30 COLOR EVALUATION SAMPLE



TM30 DETAILS

Color	R1	R2	R3	R4	R5	R6	R7	R8	R9	R10	R11	R12	R13	R14	R15
Red	78	88	96	78	77	85	82	57	0	73	76	67	80	98	70



FIDELITY INDEX

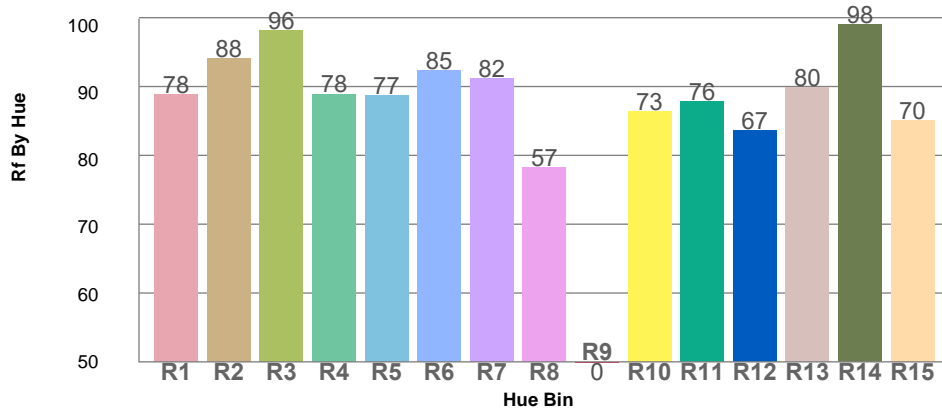
Rf 82.7

GAMUT INDEX

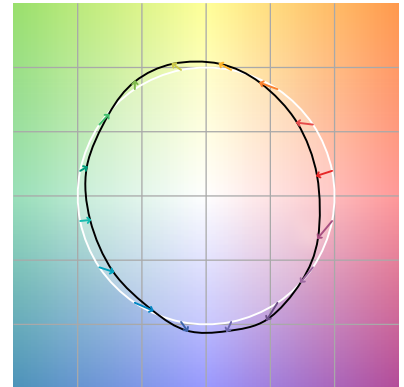
Rg 96.2

Approx. limits for sources on the Planckian locus.
Approx. limits for practical light sources.

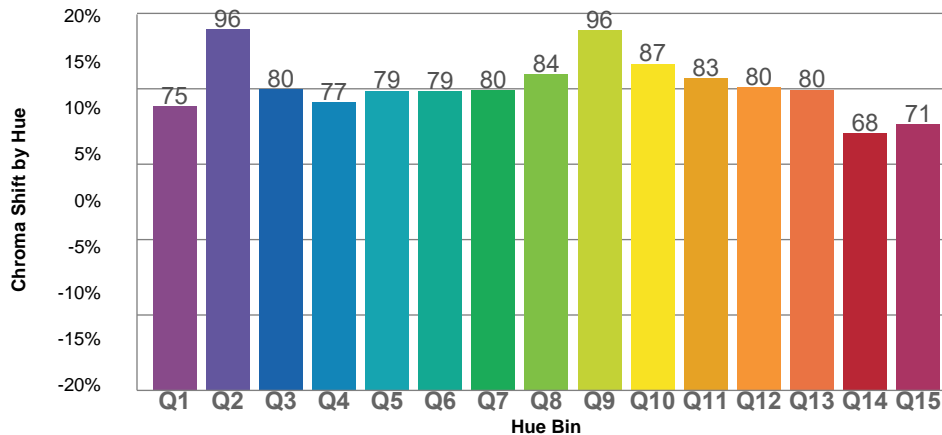
TM30 OVER 50



COLOR VECTOR GRAPHICS



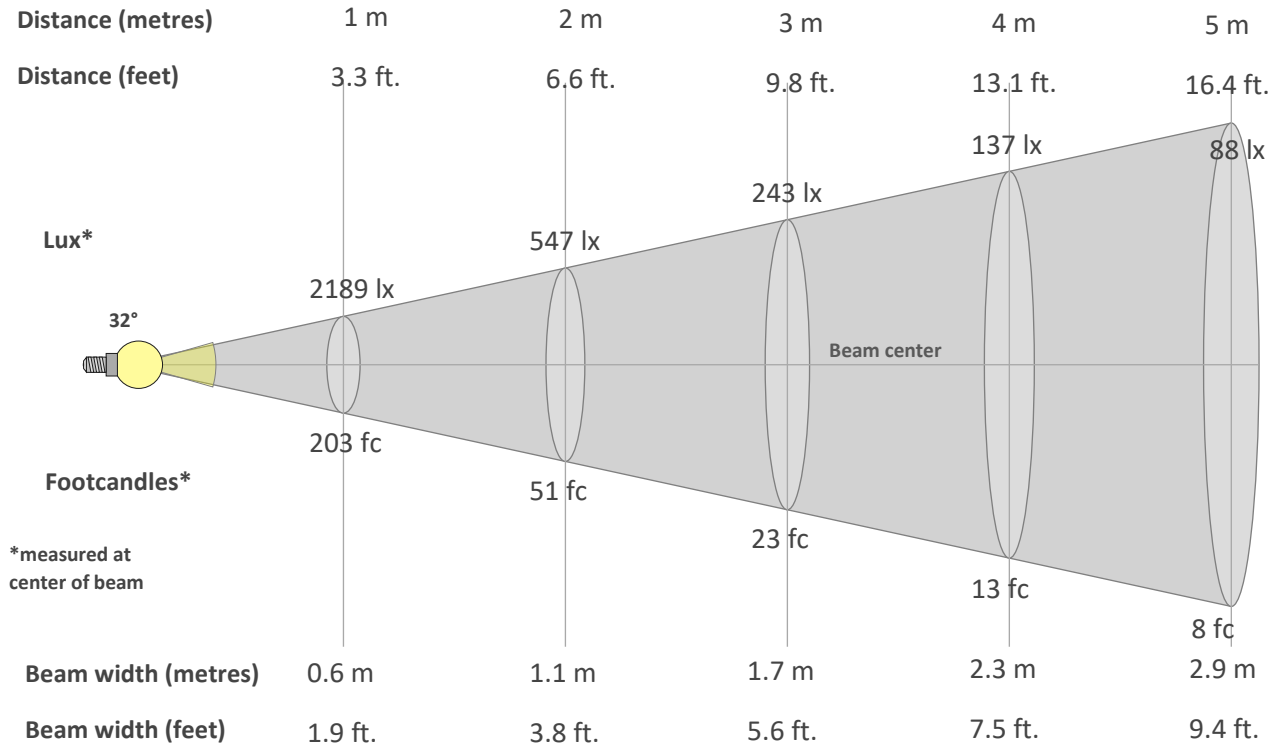
TM30 CHROMA SHIFT



COLOR DISTORTION GRAPHICS



BEAM DETAILS



Beam intensity from 1-20m

1m	2m	3m	4m	5m	6m	7m	8m	9m	10m	11m	12m	13m	14m	15m	16m	17m	18m	19m	20m
3.3ft	6.6ft	9.8ft	13.1ft	16.4ft	19.7ft	23ft	26.2ft	29.5ft	32.8ft	36.1ft	39.4ft	42.7ft	45.9ft	49.2ft	52.5ft	55.8ft	59.1ft	62.3ft	65.6ft
2189lx	547lx	243lx	137lx	88lx	61lx	45lx	34lx	27lx	22lx	18lx	15lx	13lx	11lx	10lx	9lx	8lx	7lx	6lx	5lx
203.3fc	50.8fc	22.6fc	12.7fc	8.1fc	5.6fc	4.1fc	3.2fc	2.5fc	2fc	1.7fc	1.4fc	1.2fc	1fc	0.9fc	0.8fc	0.7fc	0.6fc	0.6fc	0.5fc

Intensity in 0° c-plane

0°	2°	4°	6°	8°	10°	12°	14°	16°	18°	20°	22°	24°	26°	28°	30°	32°	34°	36°	38°
2189	2098	1929	1674	1373	1062	793	573	404	282	204	155	120	95	77	63	52	44	37	31
100%	96%	88%	76%	63%	49%	36%	26%	18%	13%	9%	7%	5%	4%	4%	3%	2%	2%	2%	1%

Intensity in 90° c-plane

0°	2°	4°	6°	8°	10°	12°	14°	16°	18°	20°	22°	24°	26°	28°	30°	32°	34°	36°	38°
2189	2179	2147	2100	2041	1973	1900	1820	1738	1653	1567	1478	1390	1301	1212	1121	1029	934	838	741
100%	100%	98%	96%	93%	90%	87%	83%	79%	76%	72%	68%	64%	59%	55%	51%	47%	43%	38%	34%

Intensity in 180° c-plane

0°	2°	4°	6°	8°	10°	12°	14°	16°	18°	20°	22°	24°	26°	28°	30°	32°	34°	36°	38°
2189	2098	1929	1674	1373	1062	793	573	404	282	204	155	120	95	77	63	52	44	37	31
100%	96%	88%	76%	63%	49%	36%	26%	18%	13%	9%	7%	5%	4%	4%	3%	2%	2%	2%	1%

Intensity in 270° c-plane

0°	2°	4°	6°	8°	10°	12°	14°	16°	18°	20°	22°	24°	26°	28°	30°	32°	34°	36°	38°
2189	2179	2147	2100	2041	1973	1900	1820	1738	1653	1567	1478	1390	1301	1212	1121	1029	934	838	741
100%	100%	98%	96%	93%	90%	87%	83%	79%	76%	72%	68%	64%	59%	55%	51%	47%	43%	38%	34%