

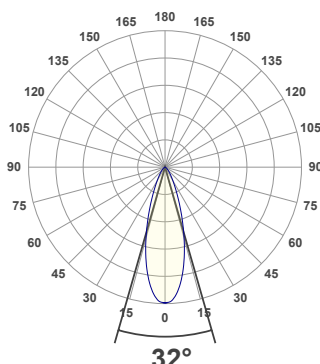
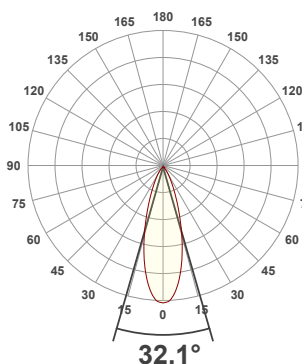


PRODUCT INFORMATION

MEASUREMENT SERIAL NUMBER:	PH-GVA-2024.Feb.27-2702-VO
DATE OF MEASUREMENT:	2/27/2024
MANUFACTURER:	GVA LIGHTING, INC.
PRODUCT NAME:	STR10 ARCHITECTURAL
SIZE (width x length x height):	49 mm x 300 mm x 61 mm
LOT:	sm303D300L2R8000
PROFILE LEGEND:	PIXEL RESOLUTION: R150/200/300 – PIXEL SIZE 150/200/300 mm
INTERNAL ACCESSORIES:	VOLTAGE LEGEND: INF – INFINITY 380 V DC, ELV – 48 V DC

ANGULAR DISTRIBUTION AT C0/180

ANGULAR DISTRIBUTION AT C90/270



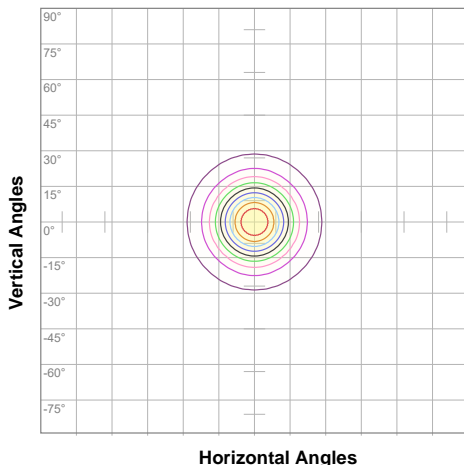
LIGHT OUTPUT DATA

TOTAL LUMEN OUTPUT:	998 lm
EFFICACY:	50 lm/W
PEAK INTENSITY:	2434 cd
COLOR RENDERING INDEX (CRI):	84.6
COLOR TEMPERATURE (CCT):	3053K
FIDELITY INDEX (TM30Rf):	84.6
GAMUT INDEX (TM30Rg):	95.5

BEAM OUTPUT DATA

BEAM ANGLE (FWHM) C0/180:	32.1°
BEAM ANGLE (FWHM) C90/270:	32°
FIELD ANGLE (10%) C0/180:	64°
FIELD ANGLE (10%) C90/270:	63.3°
NUMBER OF PLANES MEASURED:	36

ISOCANDELA DIAGRAM

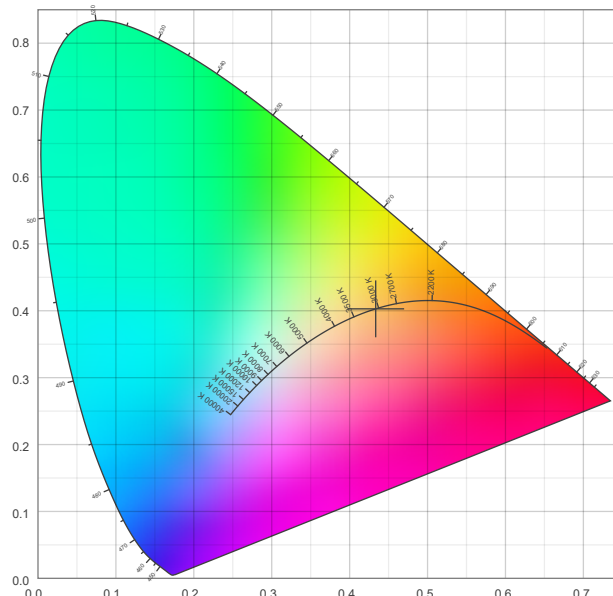


10%	243 cd
20%	485 cd
30%	728 cd
40%	971 cd
50%	1214 cd
60%	1456 cd
70%	1699 cd
80%	1942 cd
90%	2184 cd

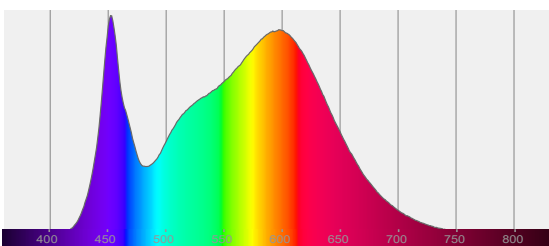
POWER OUTPUT DATA

INPUT POWER:	19.9 W
INPUT VOLTAGE:	380 V DC
INPUT CURRENT:	0.052 A
POWER FACTOR:	1.0
OPTICAL POWER:	3.06 mW
PEAK WAVELENGTH:	452 nm
DOMINANT WAVELENGTH:	583 nm

CIE 1931



SPECTRAL DISTRIBUTION



CIE 1931 ZOOM

x:	0.433
y:	0.403
u:	0.249
v:	0.347
Δuv:	-0.0029

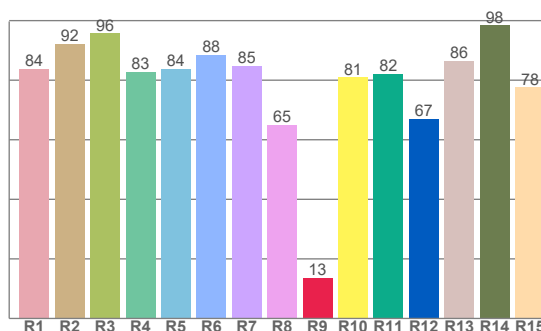
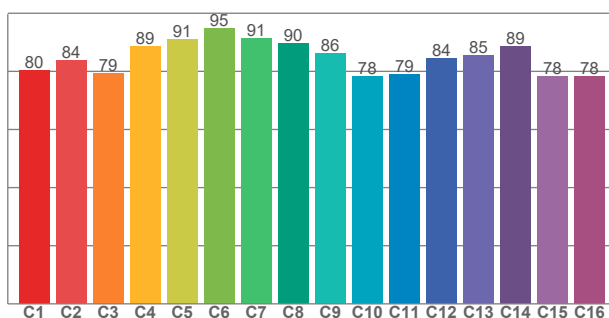
ZONAL LUMEN SUMMARY

0°-10° 203 lm	10°-20° 356 lm	20°-30° 223 lm	30°-40° 113 lm	40°-50° 56.6 lm	50°-60° 28.7 lm	60°-70° 13.8 lm	70°-80° 3.51 lm	80°-90° 0.073 lm
90°-100° 0.008 lm	100°-110° 0.004 lm	110°-120° 0.004 lm	120°-130° 0.003 lm	130°-140° 0.003 lm	140°-150° 0.002 lm	150°-160° 0.002 lm	160°-170° 0.001 lm	170°-180° 0.000 lm

COLOR DETAILS

TM30: 84.6

CRI: 84.6 (R1-R8)



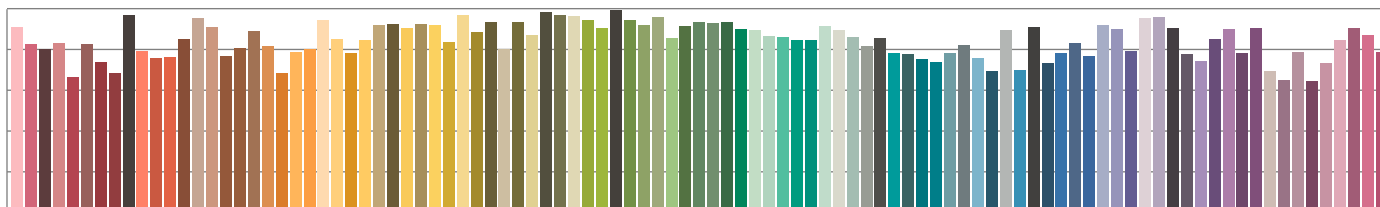
TM30 C values, 16 binned values out of total of 99 C values

CRI R values, only R1-R8 are used to calculate final CRI value

C1	C2	C3	C4	C5	C6	C7	C8	C9	C10	C11	C12	C13	C14	C15	C16
80.5	83.7	79.4	88.7	91.0	94.7	91.4	89.7	86.3	78.2	79.1	84.4	85.4	88.6	78.2	78.3

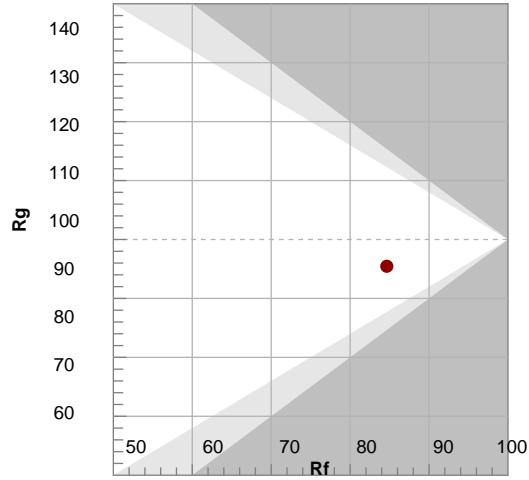
R1	R2	R3	R4	R5	R6	R7	R8	R9	R10	R11	R12	R13	R14	R15
83.8	92.3	95.7	82.8	83.8	88.4	84.9	65.1	13.5	81.0	82.1	67.1	86.4	98.4	77.5

TM30 COLOR EVALUATION SAMPLE



TM30 DETAILS

Color	TM30 Rf	TM30 Rg	TM30 Rm	TM30 Ra
1	84	92	96	83
2	84	92	96	83
3	84	92	96	83
4	84	92	96	83
5	84	92	96	83
6	84	92	96	83
7	84	92	96	83
8	84	92	96	83
9	84	92	96	83
10	84	92	96	83
11	84	92	96	83
12	84	92	96	83
13	84	92	96	83
14	84	92	96	83
15	84	92	96	83



FIDELITY INDEX

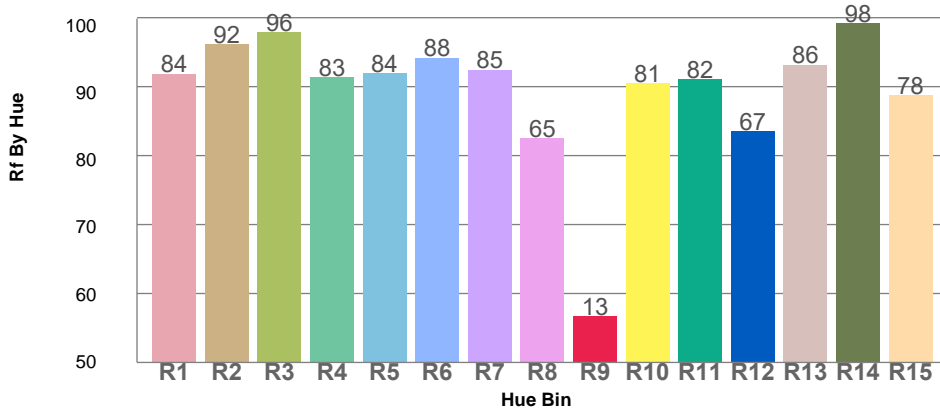
Rf 84.6

GAMUT INDEX

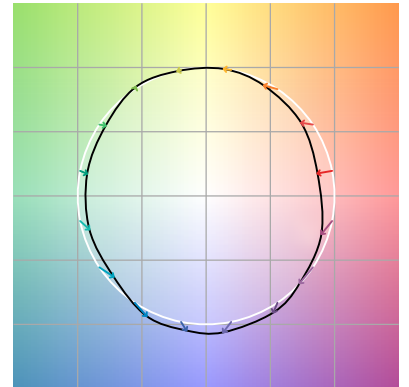
Rg 95.5

Approx. limits for sources on the Planckian locus.
Approx. limits for practical light sources.

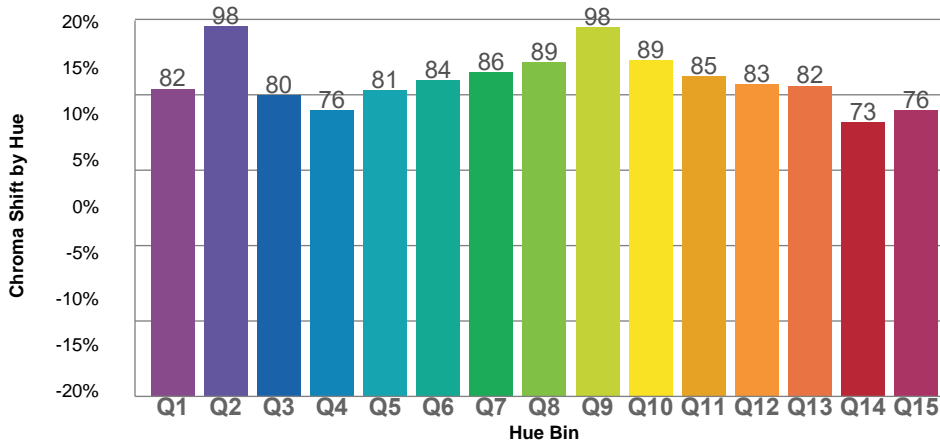
TM30 OVER 50



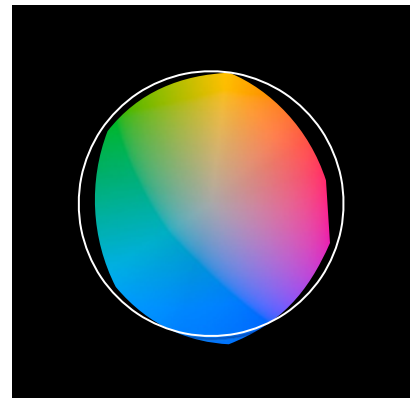
COLOR VECTOR GRAPHICS



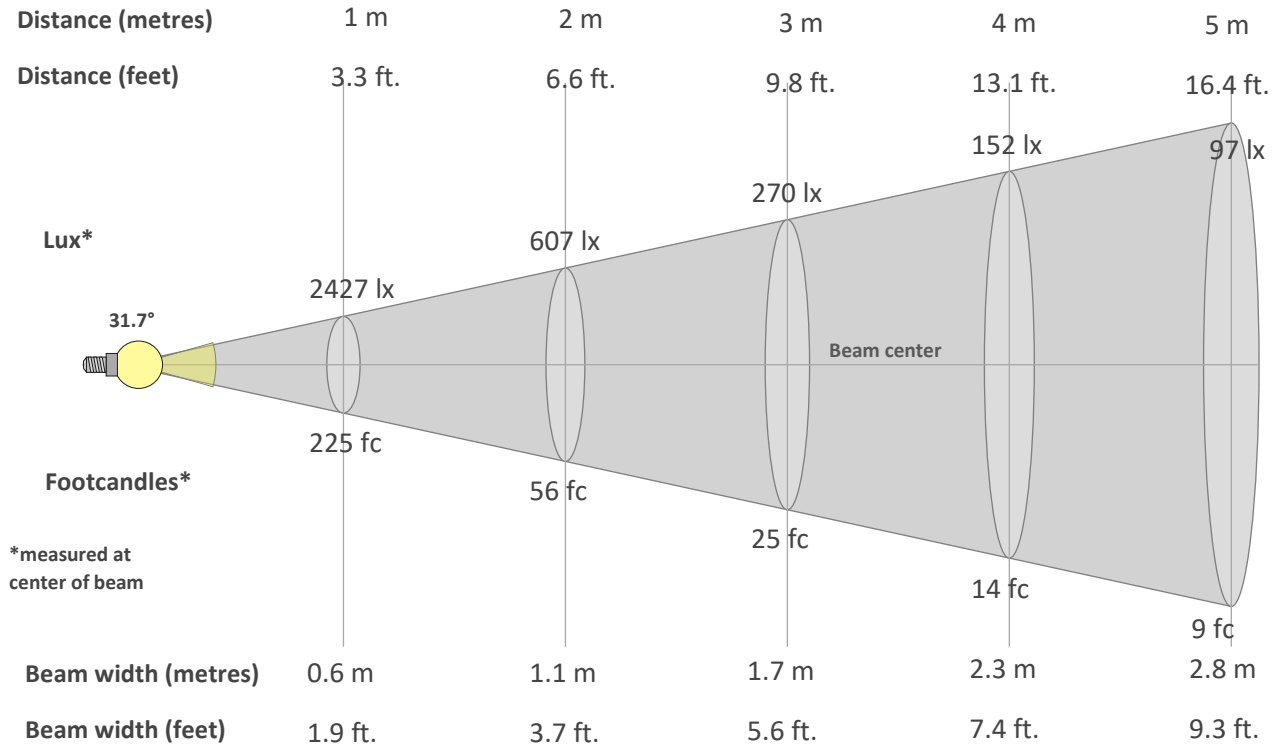
TM30 CHROMA SHIFT



COLOR DISTORTION GRAPHICS



BEAM DETAILS



Beam intensity from 1-20m

1m	2m	3m	4m	5m	6m	7m	8m	9m	10m	11m	12m	13m	14m	15m	16m	17m	18m	19m	20m
3.3ft	6.6ft	9.8ft	13.1ft	16.4ft	19.7ft	23ft	26.2ft	29.5ft	32.8ft	36.1ft	39.4ft	42.7ft	45.9ft	49.2ft	52.5ft	55.8ft	59.1ft	62.3ft	65.6ft
2427lx	607lx	270lx	152lx	97lx	67lx	50lx	38lx	30lx	24lx	20lx	17lx	14lx	12lx	11lx	9lx	8lx	7lx	7lx	6lx
225.5fc	56.4fc	25.1fc	14.1fc	9fc	6.3fc	4.6fc	3.5fc	2.8fc	2.3fc	1.9fc	1.6fc	1.3fc	1.2fc	1fc	0.9fc	0.8fc	0.7fc	0.6fc	0.6fc

Intensity in 0° c-plane

0°	2°	4°	6°	8°	10°	12°	14°	16°	18°	20°	22°	24°	26°	28°	30°	32°	34°	36°	38°
2427	2387	2315	2194	2036	1844	1635	1420	1208	1006	826	674	546	440	356	291	241	199	165	136
100%	98%	95%	90%	84%	76%	67%	59%	50%	41%	34%	28%	22%	18%	15%	12%	10%	8%	7%	6%

Intensity in 90° c-plane

0°	2°	4°	6°	8°	10°	12°	14°	16°	18°	20°	22°	24°	26°	28°	30°	32°	34°	36°	38°
2427	2390	2317	2197	2039	1850	1638	1419	1203	998	814	660	531	427	344	280	232	193	161	135
100%	98%	95%	91%	84%	76%	67%	58%	50%	41%	34%	27%	22%	18%	14%	12%	10%	8%	7%	6%

Intensity in 180° c-plane

0°	2°	4°	6°	8°	10°	12°	14°	16°	18°	20°	22°	24°	26°	28°	30°	32°	34°	36°	38°
2427	2387	2315	2194	2036	1844	1635	1420	1208	1006	826	674	546	440	356	291	241	199	165	136
100%	98%	95%	90%	84%	76%	67%	59%	50%	41%	34%	28%	22%	18%	15%	12%	10%	8%	7%	6%

Intensity in 270° c-plane

0°	2°	4°	6°	8°	10°	12°	14°	16°	18°	20°	22°	24°	26°	28°	30°	32°	34°	36°	38°
2427	2390	2317	2197	2039	1850	1638	1419	1203	998	814	660	531	427	344	280	232	193	161	135
100%	98%	95%	91%	84%	76%	67%	58%	50%	41%	34%	27%	22%	18%	14%	12%	10%	8%	7%	6%