

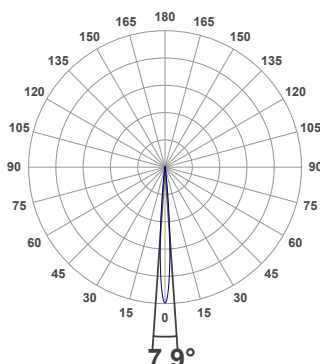
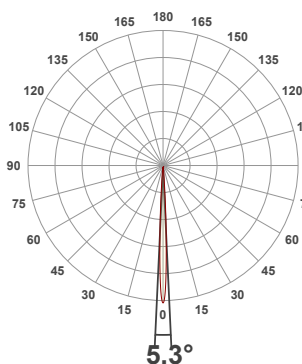


PRODUCT INFORMATION

MEASUREMENT SERIAL NUMBER:	PH-GVA-2024.Jun.21-3593-VO
DATE OF MEASUREMENT:	6/21/2024
MANUFACTURER:	GVA LIGHTING, INC.
PRODUCT NAME:	STR10 ARCHITECTURAL
SIZE (width x length x height):	49 mm x 300 mm x 61 mm
LOT:	XPEBWT-H1-0000-00CZ7
PROFILE LEGEND:	PIXEL RESOLUTION: R150/200/300 – PIXEL SIZE 150/200/300 mm
CM – CLEAR MATTE, BM – BLACK MATTE, CU – CUSTOM COLOR	VOLTAGE LEGEND: INF – INFINITY 380 V DC, ELV – 48 V DC
INTERNAL ACCESSORIES: NL – NO LOUVER, ML – MICRO LOUVER	

ANGULAR DISTRIBUTION AT C0/180

ANGULAR DISTRIBUTION AT C90/270



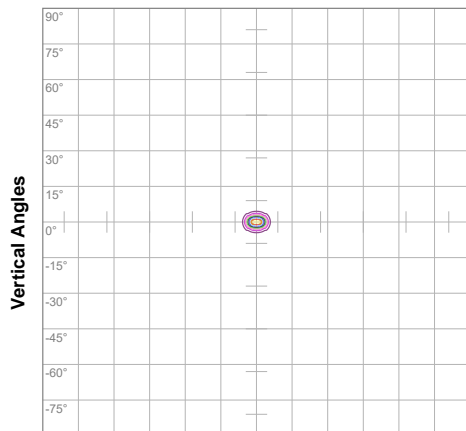
LIGHT OUTPUT DATA

TOTAL LUMEN OUTPUT:	910 lm
EFFICACY:	46 lm/W
PEAK INTENSITY:	47765 cd
COLOR RENDERING INDEX (CRI):	79.2
COLOR TEMPERATURE (CCT):	3053K
FIDELITY INDEX (TM30Rf):	81.5
GAMUT INDEX (TM30Rg):	97.0

BEAM OUTPUT DATA

BEAM ANGLE (FWHM) C0/180:	5.3°
BEAM ANGLE (FWHM) C90/270:	7.9°
FIELD ANGLE (10%) C0/180:	10.1°
FIELD ANGLE (10%) C90/270:	13.6°
NUMBER OF PLANES MEASURED:	36

ISOCANDELA DIAGRAM

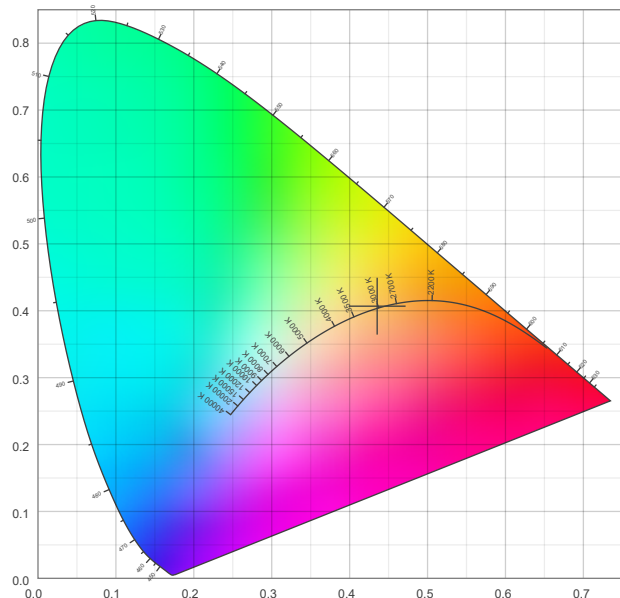


10%	4774 cd
20%	9548 cd
30%	14322 cd
40%	19096 cd
50%	23870 cd
60%	28644 cd
70%	33418 cd
80%	38193 cd
90%	42967 cd

POWER OUTPUT DATA

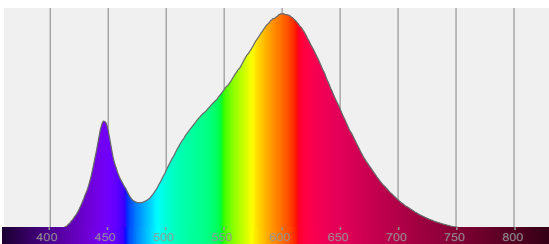
INPUT POWER:	19.9 W
INPUT VOLTAGE:	380 V DC
INPUT CURRENT:	0.052 A
POWER FACTOR:	1.0
OPTICAL POWER:	2.71 mW
PEAK WAVELENGTH:	601 nm
DOMINANT WAVELENGTH:	583 nm

CIE 1931



SPECTRAL DISTRIBUTION

CIE 1931 ZOOM



x: 0.435
y: 0.407
u: 0.248
v: 0.348
Δuv: 0.0013

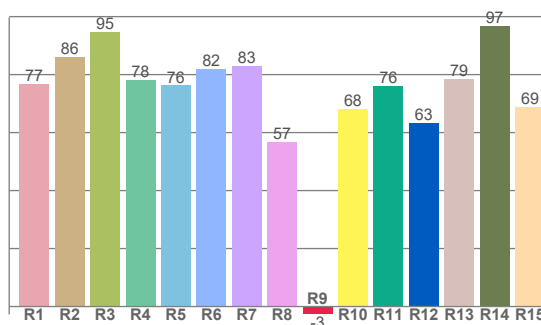
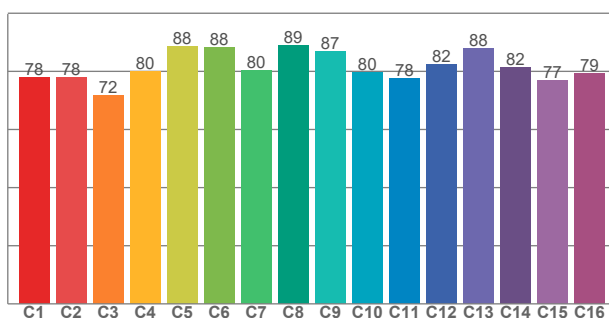
ZONAL LUMEN SUMMARY

0°-10° 747 lm	10°-20° 128 lm	20°-30° 32.6 lm	30°-40° 2.59 lm	40°-50° 0.042 lm	50°-60° 0.017 lm	60°-70° 0.012 lm	70°-80° 0.011 lm	80°-90° 0.011 lm
90°-100° 0.001 lm	100°-110° 0.000 lm	110°-120° 0.006 lm	120°-130° 0.000 lm	130°-140° 0.001 lm	140°-150° 0.000 lm	150°-160° 0.000 lm	160°-170° 0.000 lm	170°-180° 0.004 lm

COLOR DETAILS

TM30: 81.5

CRI: 79.2 (R1-R8)



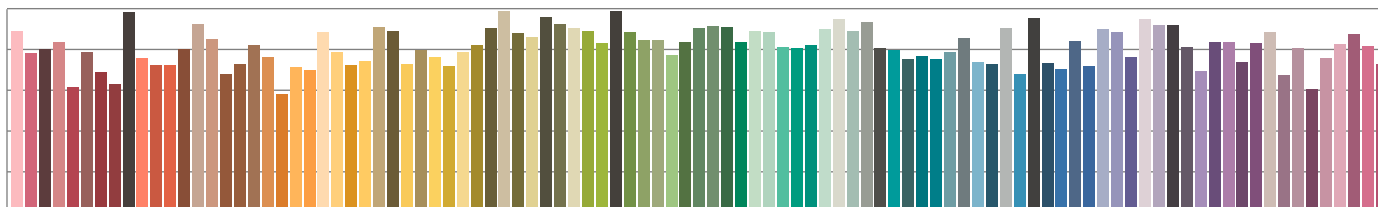
TM30 C values, 16 binned values out of total of 99 C values

CRI R values, only R1-R8 are used to calculate final CRI value

C1	C2	C3	C4	C5	C6	C7	C8	C9	C10	C11	C12	C13	C14	C15	C16
77.9	78.0	71.7	80.1	88.5	88.2	80.5	89.1	86.9	79.8	77.7	82.4	87.8	81.5	77.0	79.2

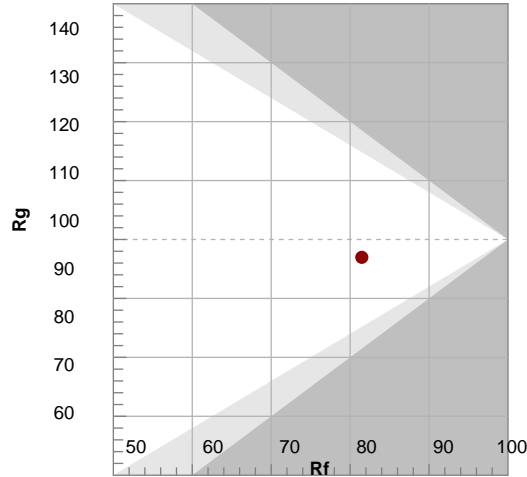
R1	R2	R3	R4	R5	R6	R7	R8	R9	R10	R11	R12	R13	R14	R15
76.8	86.1	94.7	78.2	76.2	81.9	83.1	56.8	-2.7	68.1	76.2	63.3	78.5	96.8	68.8

TM30 COLOR EVALUATION SAMPLE



TM30 DETAILS

Color	Rf	Rg	Ra	Ri
1	77	95	92	95
2	86	95	92	95
3	95	95	92	95
4	78	95	92	95
5	76	95	92	95
6	82	95	92	95
7	83	95	92	95
8	57	95	92	95
9	-3	95	92	95
10	68	95	92	95
11	76	95	92	95
12	63	95	92	95
13	79	95	92	95
14	97	95	92	95
15	69	95	92	95



FIDELITY INDEX

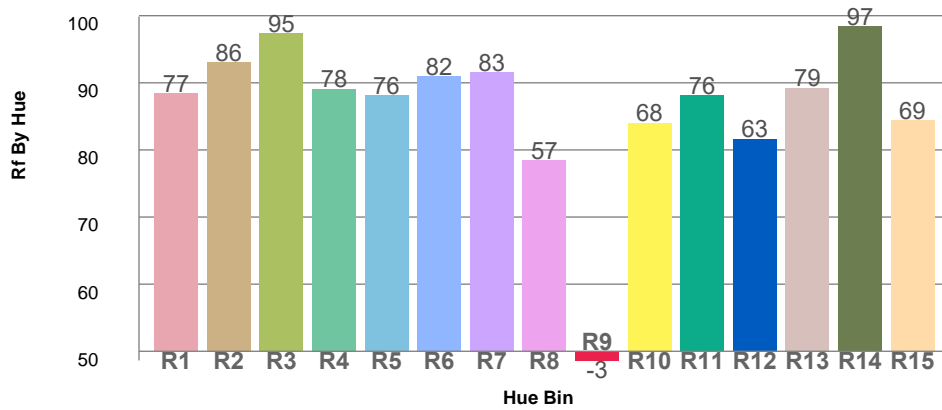
Rf 81.5

GAMUT INDEX

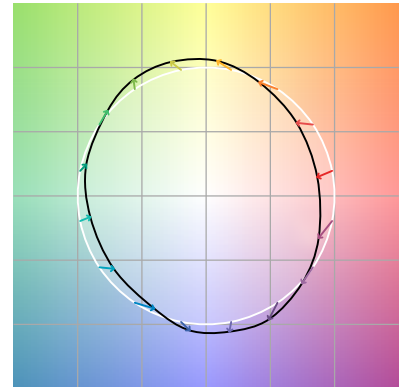
Rg 97.0

Approx. limits for sources on the Planckian locus.
Approx. limits for practical light sources.

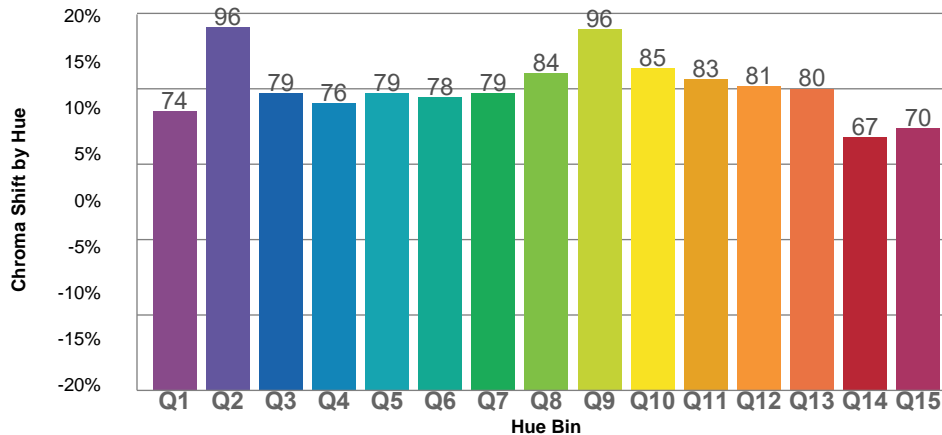
TM30 OVER 50



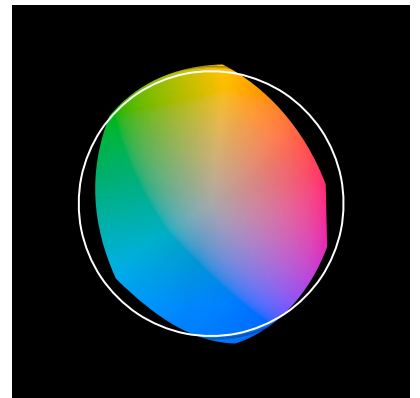
COLOR VECTOR GRAPHICS



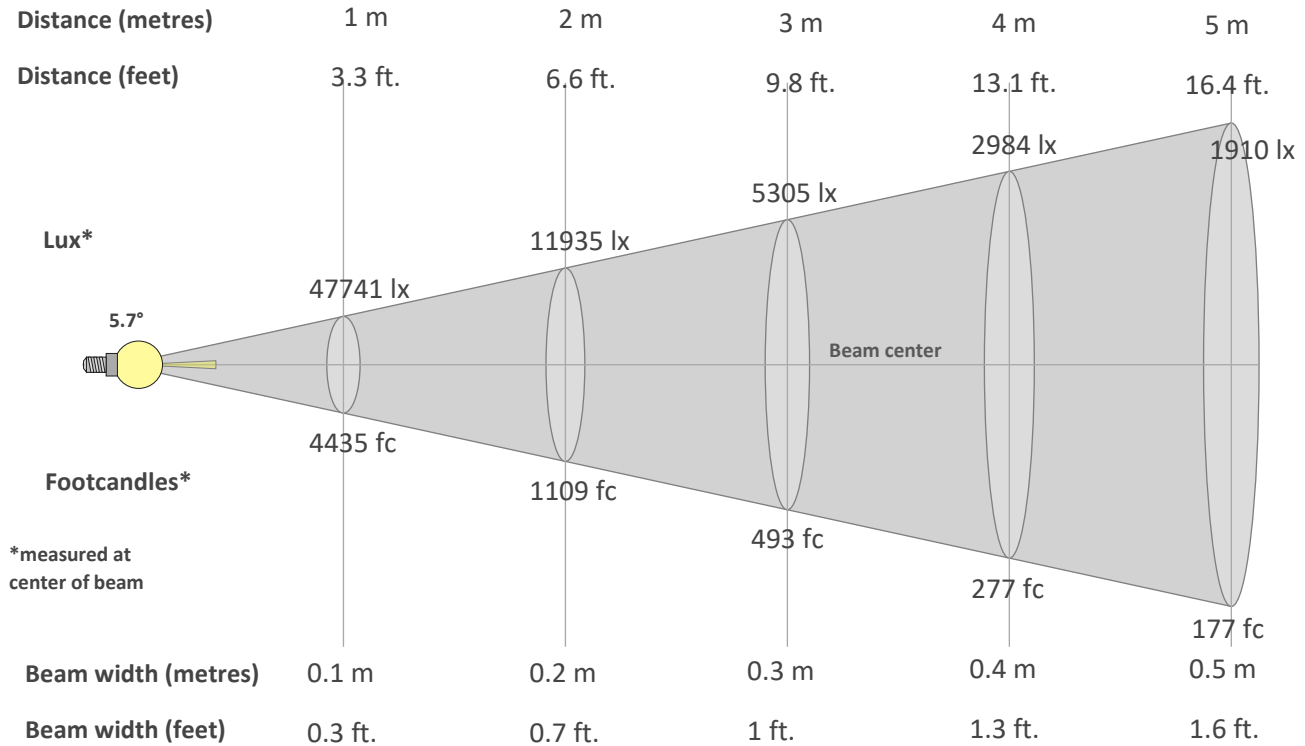
TM30 CHROMA SHIFT



COLOR DISTORTION GRAPHICS



BEAM DETAILS



Beam intensity from 1-20m

1m	2m	3m	4m	5m	6m	7m	8m	9m	10m	11m	12m	13m	14m	15m	16m	17m	18m	19m	20m
3.3ft	6.6ft	9.8ft	13.1ft	16.4ft	19.7ft	23ft	26.2ft	29.5ft	32.8ft	36.1ft	39.4ft	42.7ft	45.9ft	49.2ft	52.5ft	55.8ft	59.1ft	62.3ft	65.6ft
47741lx	11935lx	5305lx	2984lx	1910lx	1326lx	974lx	746lx	589lx	477lx	395lx	332lx	282lx	244lx	212lx	186lx	165lx	147lx	132lx	119lx
4435.3fc	1108.8fc	492.8fc	277.2fc	177.4fc	123.2fc	90.5fc	69.3fc	54.8fc	44.4fc	36.7fc	30.8fc	26.2fc	22.6fc	19.7fc	17.3fc	15.3fc	13.7fc	12.3fc	11.1fc

Intensity in 0° c-plane

0°	1°	2°	3°	4°	5°	6°	7°	8°	9°	10°	11°	12°	13°	14°	15°	16°	17°	18°	19°
47.7K	43.9K	32.4K	19.8K	10.5K	4.9K	2.7K	2.0K	1.5K	1.2K	1.0K	0.8K	0.7K	0.6K	0.5K	0.4K	0.4K	0.3K	0.2K	0.2K
100%	92%	68%	42%	22%	10%	6%	4%	3%	2%	2%	2%	1%	1%	1%	1%	1%	1%	1%	0%

Intensity in 90° c-plane

0°	1°	2°	3°	4°	5°	6°	7°	8°	9°	10°	11°	12°	13°	14°	15°	16°	17°	18°	19°
47.7K	45.7K	40.1K	32.1K	23.2K	14.6K	8.0K	4.2K	2.3K	1.6K	1.2K	1.0K	0.8K	0.7K	0.6K	0.5K	0.4K	0.3K	0.3K	0.2K
100%	96%	84%	67%	49%	30%	17%	9%	5%	3%	3%	2%	2%	1%	1%	1%	1%	1%	1%	0%

Intensity in 180° c-plane

0°	1°	2°	3°	4°	5°	6°	7°	8°	9°	10°	11°	12°	13°	14°	15°	16°	17°	18°	19°
47.7K	43.9K	32.4K	19.8K	10.5K	4.9K	2.7K	2.0K	1.5K	1.2K	1.0K	0.8K	0.7K	0.6K	0.5K	0.4K	0.4K	0.3K	0.2K	0.2K
100%	92%	68%	42%	22%	10%	6%	4%	3%	2%	2%	2%	1%	1%	1%	1%	1%	1%	1%	0%

Intensity in 270° c-plane

0°	1°	2°	3°	4°	5°	6°	7°	8°	9°	10°	11°	12°	13°	14°	15°	16°	17°	18°	19°
47.7K	45.7K	40.1K	32.1K	23.2K	14.6K	8.0K	4.2K	2.3K	1.6K	1.2K	1.0K	0.8K	0.7K	0.6K	0.5K	0.4K	0.3K	0.3K	0.2K
100%	96%	84%	67%	49%	30%	17%	9%	5%	3%	3%	2%	2%	1%	1%	1%	1%	1%	1%	0%