

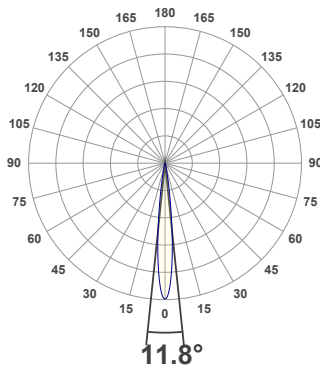
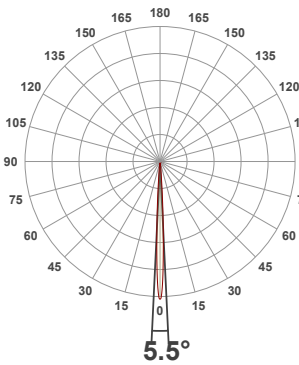


PRODUCT INFORMATION

MEASUREMENT SERIAL NUMBER:	VFR-230927-1678-MS
DATE OF MEASUREMENT:	9/27/2023
MANUFACTURER:	GVA LIGHTING, INC.
PRODUCT NAME:	STR10 ARCHITECTURAL
SIZE (width x length x height):	49 mm x 300 mm x 61 mm
LOT:	XPEBWT-H1-0000-00CZ7
PROFILE LEGEND:	PIXEL RESOLUTION:
CM – CLEAR MATTE,	R150/200/300 – PIXEL SIZE
BM – BLACK MATTE,	150/200/300 mm
CU – CUSTOM COLOR	VOLTAGE LEGEND:
INTERNAL ACCESSORIES:	INF – INFINITY 380 V DC,
NL – NO LOUVER, ML – MICRO LOUVER	ELV – 48 V DC

ANGULAR DISTRIBUTION AT C0/180

ANGULAR DISTRIBUTION AT C90/270



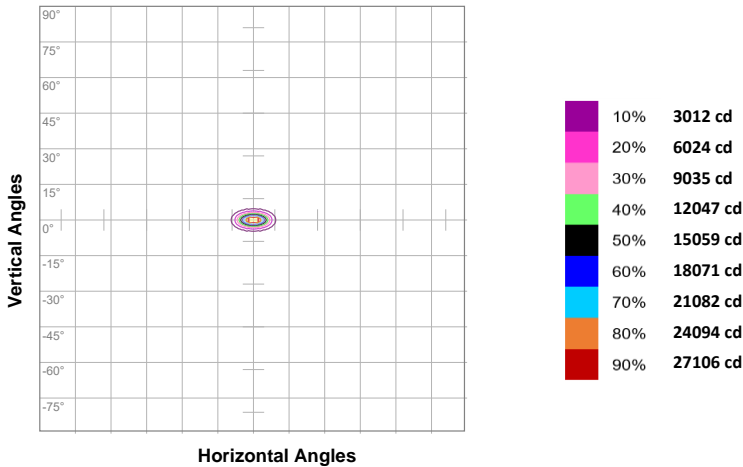
LIGHT OUTPUT DATA

TOTAL LUMEN OUTPUT:	888 lm
EFFICACY:	45 lm/W
PEAK INTENSITY:	30153 cd
COLOR RENDERING INDEX (CRI):	79.6
COLOR TEMPERATURE (CCT):	3040K
FIDELITY INDEX (TM30Rf):	82.1
GAMUT INDEX (TM30Rg):	96.5

BEAM OUTPUT DATA

BEAM ANGLE (FWHM) C0/180:	5.5°
BEAM ANGLE (FWHM) C90/270:	11.8°
FIELD ANGLE (10%) C0/180:	11°
FIELD ANGLE (10%) C90/270:	21.1°
NUMBER OF PLANES MEASURED:	36

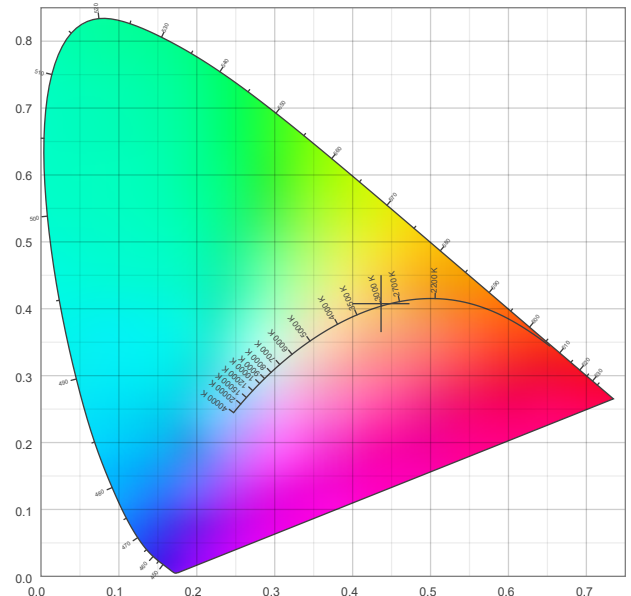
ISOCANDELA DIAGRAM



POWER OUTPUT DATA

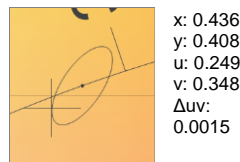
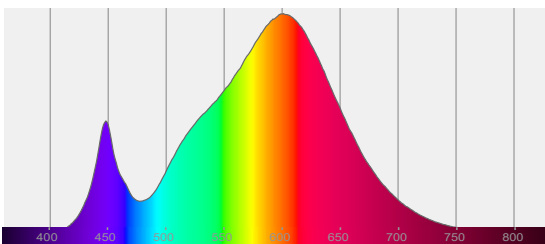
INPUT POWER:	19.9 W
INPUT VOLTAGE:	380 V DC
INPUT CURRENT:	0.052 A
POWER FACTOR:	1.0
OPTICAL POWER:	2.64 mW
PEAK WAVELENGTH:	601 nm
DOMINANT WAVELENGTH:	583 nm

CIE 1931



SPECTRAL DISTRIBUTION

CIE 1931 ZOOM



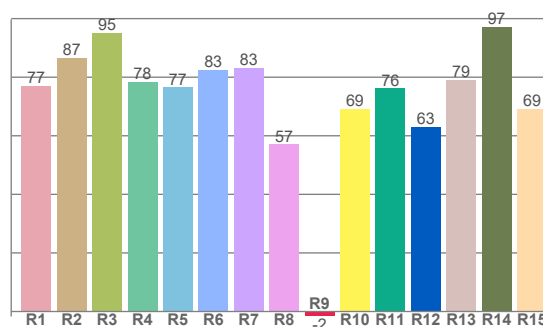
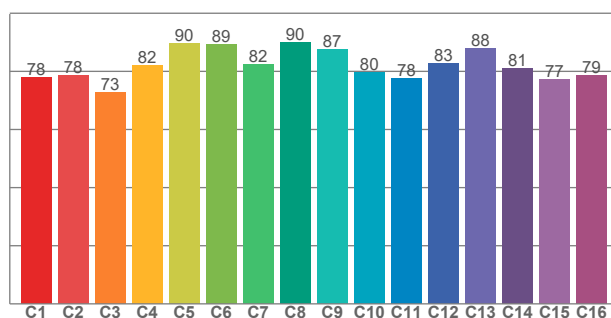
ZONAL LUMEN SUMMARY

0°-10° 685 lm	10°-20° 149 lm	20°-30° 43.4 lm	30°-40° 10.4 lm	40°-50° 0.823 lm	50°-60° 0.011 lm	60°-70° 0.005 lm	70°-80° 0.004 lm	80°-90° 0.004 lm
90°-100° 0.001 lm	100°-110° 0.001 lm	110°-120° 0.000 lm	120°-130° 0.000 lm	130°-140° 0.000 lm	140°-150° 0.000 lm	150°-160° 0.000 lm	160°-170° 0.000 lm	170°-180° 0.001 lm

COLOR DETAILS

TM30: 82.1

CRI: 79.6 (R1-R8)



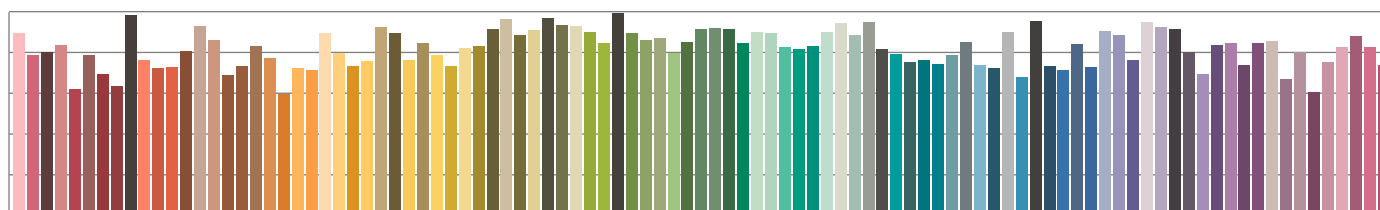
TM30 C values, 16 binned values out of total of 99 C values

CRI R values, only R1-R8 are used to calculate final CRI value

C1	C2	C3	C4	C5	C6	C7	C8	C9	C10	C11	C12	C13	C14	C15	C16
78.1	78.5	72.8	82.1	89.6	89.4	82.3	89.9	87.4	79.7	77.7	82.8	88.1	81.1	77.4	78.5

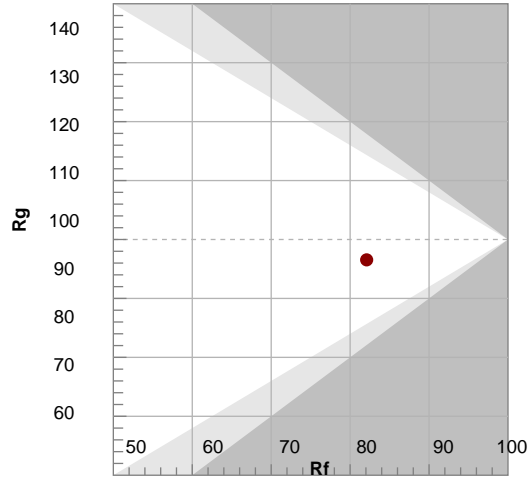
R1	R2	R3	R4	R5	R6	R7	R8	R9	R10	R11	R12	R13	R14	R15
77.2	86.6	95.1	78.3	76.6	82.5	83.2	57.0	-1.7	69.1	76.2	63.1	79.0	97.1	69.2

TM30 COLOR EVALUATION SAMPLE



TM30 DETAILS

Bin	Color	Rf	Rg	TM30
1	Red	77	100	77
2	Orange	87	100	87
3	Yellow	95	100	95
4	Green	78	100	78
5	Teal	77	100	77
6	Cyan	83	100	83
7	Blue	83	100	83
8	Indigo	57	100	57
9	Violet	-2	100	-2
10	Yellow	69	100	69
11	Green	76	100	76
12	Blue	63	100	63
13	Purple	79	100	79
14	Red	97	100	97
15	Orange	69	100	69



FIDELITY INDEX

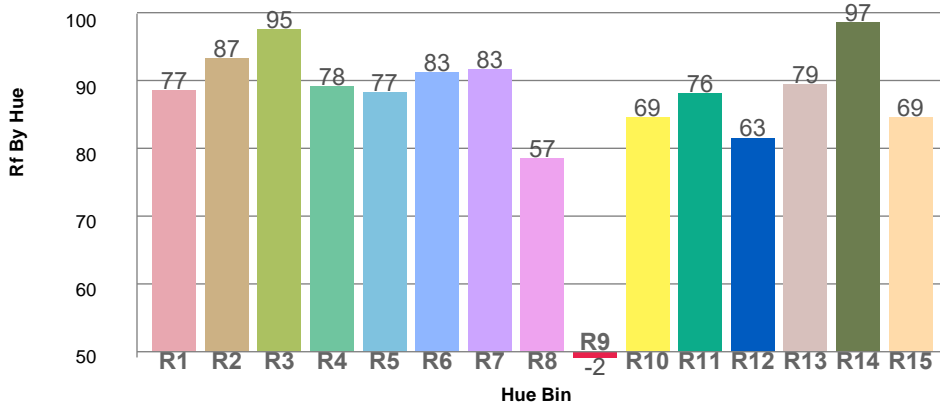
Rf 82.1

GAMUT INDEX

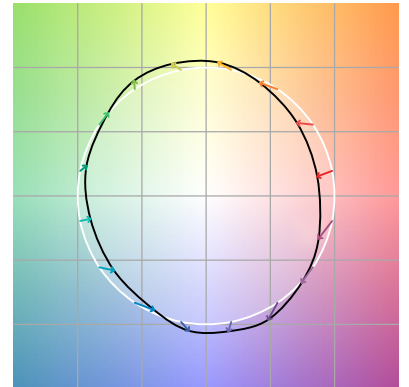
Rg 96.5

Approx. limits for sources on the Planckian locus.
Approx. limits for practical light sources.

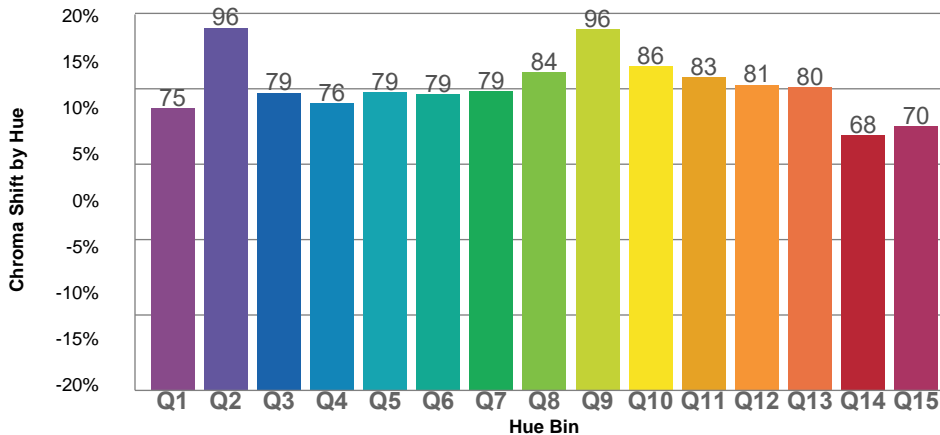
TM30 OVER 50



COLOR VECTOR GRAPHICS



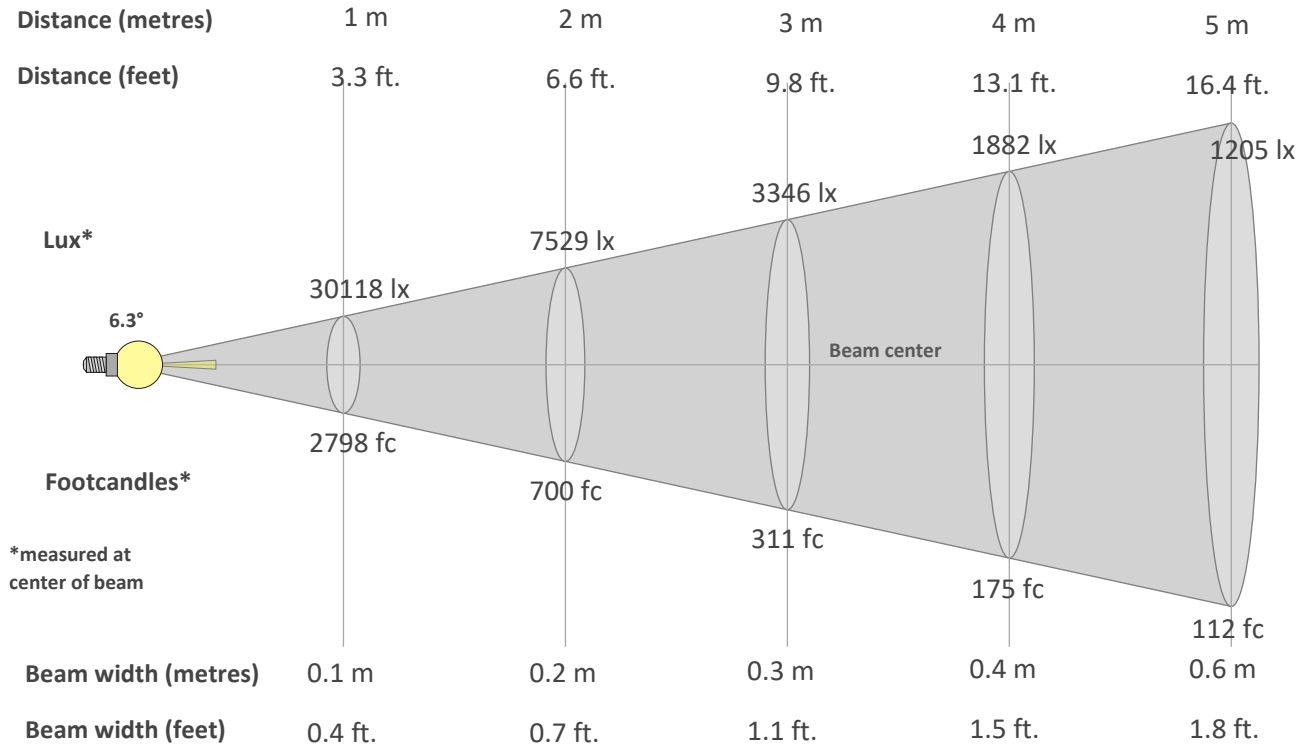
TM30 CHROMA SHIFT



COLOR DISTORTION GRAPHICS



BEAM DETAILS



Beam intensity from 1-20m

1m	2m	3m	4m	5m	6m	7m	8m	9m	10m	11m	12m	13m	14m	15m	16m	17m	18m	19m	20m
3.3ft	6.6ft	9.8ft	13.1ft	16.4ft	19.7ft	23ft	26.2ft	29.5ft	32.8ft	36.1ft	39.4ft	42.7ft	45.9ft	49.2ft	52.5ft	55.8ft	59.1ft	62.3ft	65.6ft
30118lx	7529lx	3346lx	1882lx	1205lx	837lx	615lx	471lx	372lx	301lx	249lx	209lx	178lx	154lx	134lx	118lx	104lx	93lx	83lx	75lx
2798fc	699.5fc	310.9fc	174.9fc	111.9fc	77.7fc	57.1fc	43.7fc	34.5fc	28fc	23.1fc	19.4fc	16.6fc	14.3fc	12.4fc	10.9fc	9.7fc	8.6fc	7.8fc	7fc

Intensity in 0° c-plane

0°	1°	2°	3°	4°	5°	6°	7°	8°	9°	10°	11°	12°	13°	14°	15°	16°	17°	18°	19°
30.1K	27.6K	20.5K	13.1K	7.6K	4.0K	2.3K	1.6K	1.3K	1.0K	0.8K	0.7K	0.6K	0.5K	0.4K	0.4K	0.3K	0.3K	0.2K	0.2K
100%	91%	68%	43%	25%	13%	8%	5%	4%	3%	3%	2%	2%	2%	1%	1%	1%	1%	1%	1%

Intensity in 90° c-plane

0°	1°	2°	3°	4°	5°	6°	7°	8°	9°	10°	11°	12°	13°	14°	15°	16°	17°	18°	19°
30.1K	29.5K	27.9K	25.3K	22.1K	18.5K	14.7K	11.1K	8.0K	5.6K	3.8K	2.5K	1.7K	1.2K	0.9K	0.7K	0.6K	0.5K	0.4K	0.3K
100%	98%	93%	84%	73%	61%	49%	37%	27%	19%	13%	8%	6%	4%	3%	2%	2%	2%	1%	1%

Intensity in 180° c-plane

0°	1°	2°	3°	4°	5°	6°	7°	8°	9°	10°	11°	12°	13°	14°	15°	16°	17°	18°	19°
30.1K	27.6K	20.5K	13.1K	7.6K	4.0K	2.3K	1.6K	1.3K	1.0K	0.8K	0.7K	0.6K	0.5K	0.4K	0.4K	0.3K	0.3K	0.2K	0.2K
100%	91%	68%	43%	25%	13%	8%	5%	4%	3%	3%	2%	2%	2%	1%	1%	1%	1%	1%	1%

Intensity in 270° c-plane

0°	1°	2°	3°	4°	5°	6°	7°	8°	9°	10°	11°	12°	13°	14°	15°	16°	17°	18°	19°
30.1K	29.5K	27.9K	25.3K	22.1K	18.5K	14.7K	11.1K	8.0K	5.6K	3.8K	2.5K	1.7K	1.2K	0.9K	0.7K	0.6K	0.5K	0.4K	0.3K
100%	98%	93%	84%	73%	61%	49%	37%	27%	19%	13%	8%	6%	4%	3%	2%	2%	2%	1%	1%