

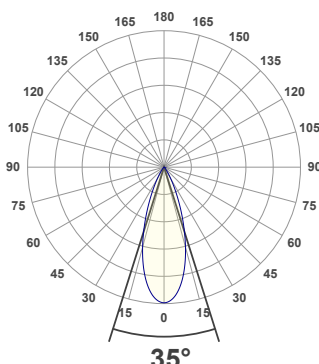
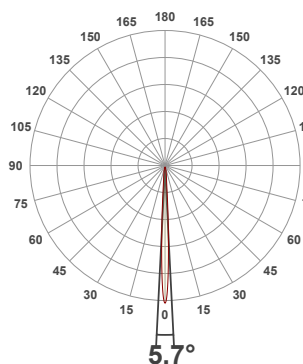


**PRODUCT INFORMATION**

MEASUREMENT SERIAL NUMBER:	PH-GVA-2024.Jun.25-3595-VO
DATE OF MEASUREMENT:	6/25/2024
MANUFACTURER:	GVA LIGHTING, INC.
PRODUCT NAME:	STR10 ARCHITECTURAL
SIZE (width x length x height):	49 mm x 300 mm x 61 mm
LOT:	XPEBWT-H1-0000-00CZ7
PROFILE LEGEND:	PIXEL RESOLUTION: CM – CLEAR MATTE, BM – BLACK MATTE, CU – CUSTOM COLOR
INTERNAL ACCESSORIES:	R150/200/300 – PIXEL SIZE 150/200/300 mm
NL – NO LOUVER, ML – MICRO LOUVER	VOLTAGE LEGEND: INF – INFINITY 380 V DC, ELV – 48 V DC

**ANGULAR DISTRIBUTION AT C0/180**

**ANGULAR DISTRIBUTION AT C90/270**



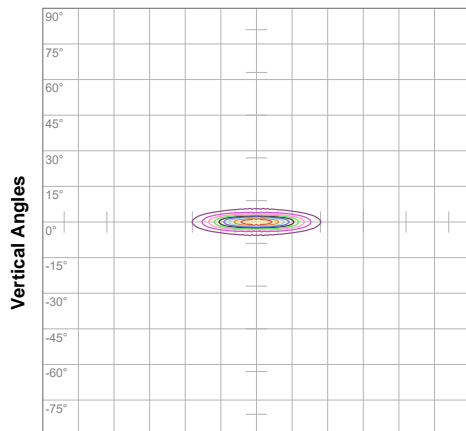
**LIGHT OUTPUT DATA**

TOTAL LUMEN OUTPUT:	915 lm
EFFICACY:	46 lm/W
PEAK INTENSITY:	9791 cd
COLOR RENDERING INDEX (CRI):	79.3
COLOR TEMPERATURE (CCT):	3070K
FIDELITY INDEX (TM30Rf):	81.3
GAMUT INDEX (TM30Rg):	97.4

**BEAM OUTPUT DATA**

BEAM ANGLE (FWHM)   C0/180:	5.7°
BEAM ANGLE (FWHM)   C90/270:	35°
FIELD ANGLE (10%)   C0/180:	12.9°
FIELD ANGLE (10%)   C90/270:	60.2°
NUMBER OF PLANES MEASURED:	36

**ISOCANDELA DIAGRAM**

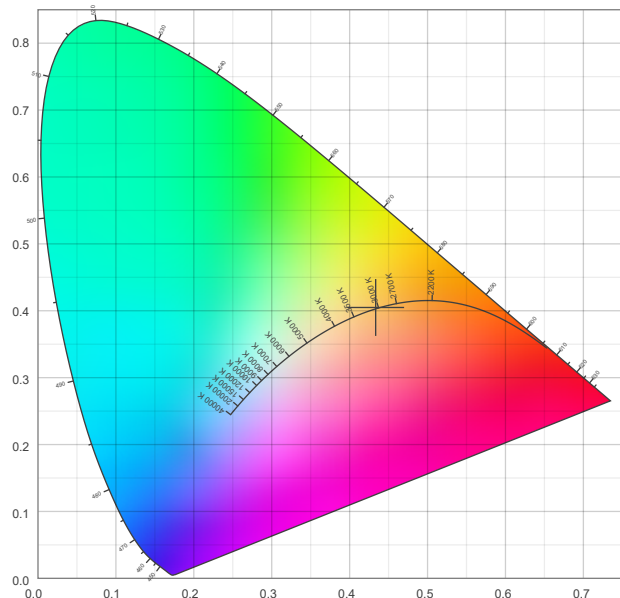


10%	979 cd
20%	1957 cd
30%	2936 cd
40%	3915 cd
50%	4894 cd
60%	5872 cd
70%	6851 cd
80%	7830 cd
90%	8809 cd

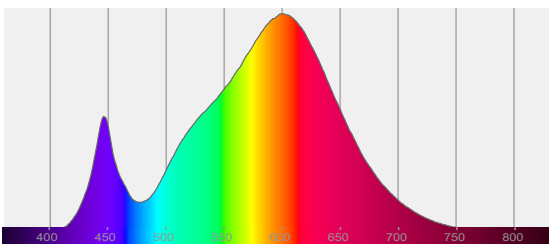
**POWER OUTPUT DATA**

INPUT POWER:	19.9 W
INPUT VOLTAGE:	380 V DC
INPUT CURRENT:	0.052 A
POWER FACTOR:	1.0
OPTICAL POWER:	2.73 mW
PEAK WAVELENGTH:	601 nm
DOMINANT WAVELENGTH:	583 nm

**CIE 1931**



**SPECTRAL DISTRIBUTION**



**CIE 1931 ZOOM**

x:	0.433
y:	0.405
u:	0.248
v:	0.347
Δuv:	0.0008

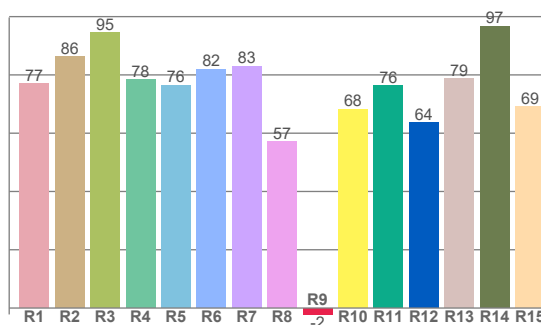
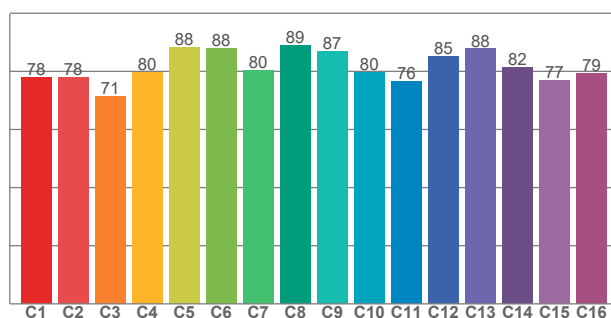
### ZONAL LUMEN SUMMARY

0°-10° 357 lm	10°-20° 319 lm	20°-30° 154 lm	30°-40° 56.3 lm	40°-50° 20.1 lm	50°-60° 6.96 lm	60°-70° 1.71 lm	70°-80° 0.078 lm	80°-90° 0.002 lm
90°-100° 0.000 lm	100°-110° 0.000 lm	110°-120° 0.000 lm	120°-130° 0.000 lm	130°-140° 0.000 lm	140°-150° 0.000 lm	150°-160° 0.000 lm	160°-170° 0.000 lm	170°-180° 0.000 lm

### COLOR DETAILS

TM30: 81.3

CRI: 79.3 (R1-R8)



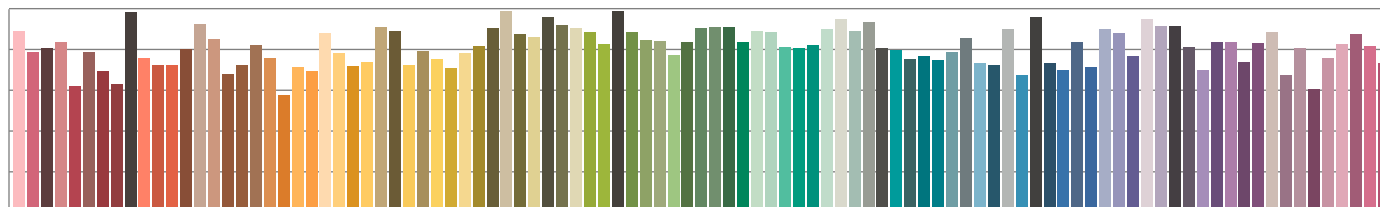
TM30 C values, 16 binned values out of total of 99 C values

CRI R values, only R1-R8 are used to calculate final CRI value

C1	C2	C3	C4	C5	C6	C7	C8	C9	C10	C11	C12	C13	C14	C15	C16
78.0	77.9	71.4	79.7	88.2	87.8	80.3	88.9	86.9	79.7	76.4	85.2	87.8	81.5	77.0	79.2

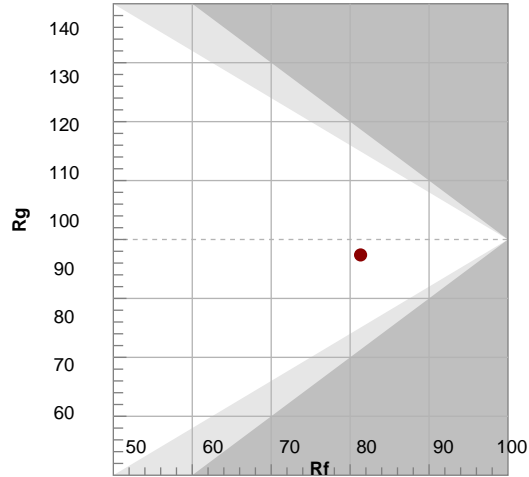
R1	R2	R3	R4	R5	R6	R7	R8	R9	R10	R11	R12	R13	R14	R15
77.0	86.3	94.5	78.3	76.5	82.0	83.0	57.0	-2.2	68.3	76.3	63.5	78.7	96.7	69.2

### TM30 COLOR EVALUATION SAMPLE



TM30 DETAILS

Color	R1	R2	R3	R4	R5	R6	R7	R8	R9	R10	R11	R12	R13	R14	R15
Red	77	86	95	78	76	82	83	57	-2	68	76	64	79	97	69



FIDELITY INDEX

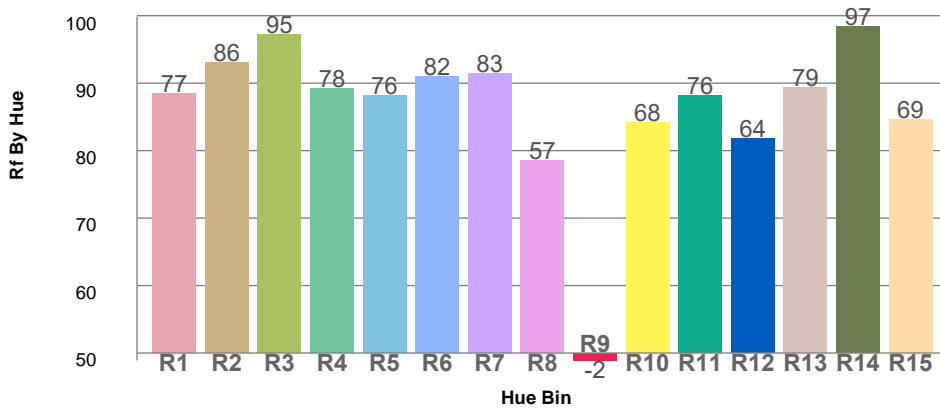
**Rf 81.3**

GAMUT INDEX

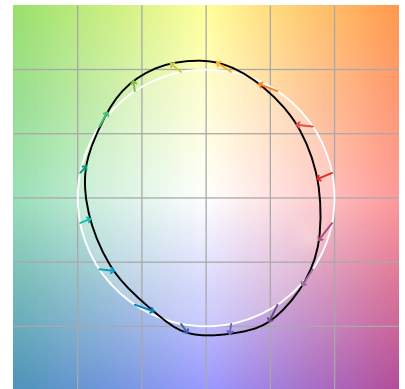
**Rg 97.4**

Approx. limits for sources on the Planckian locus.  
Approx. limits for practical light sources.

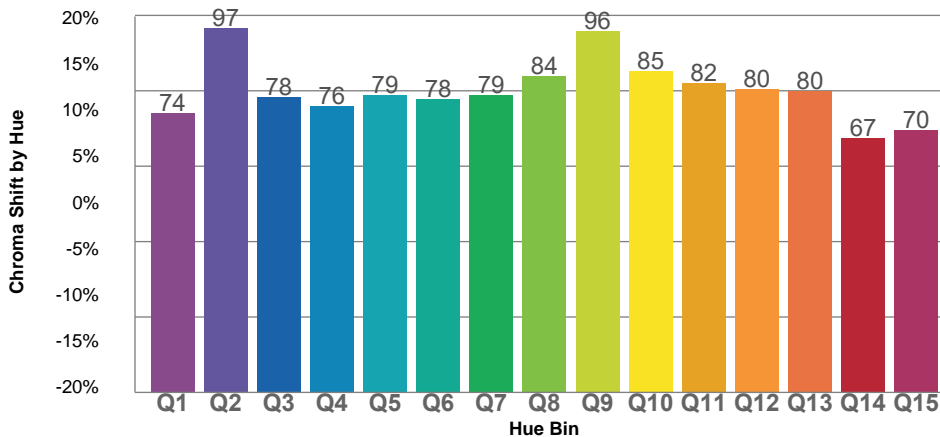
TM30 OVER 50



COLOR VECTOR GRAPHICS



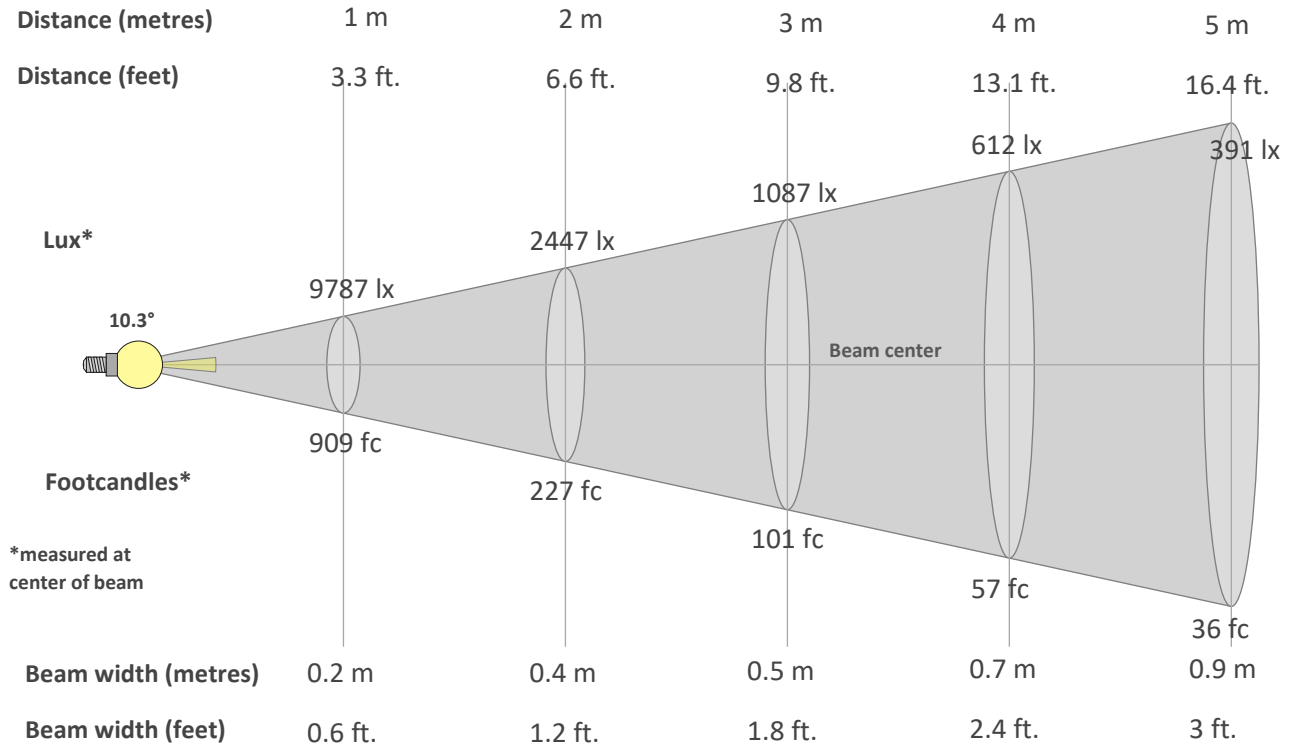
TM30 CHROMA SHIFT



COLOR DISTORTION GRAPHICS



**BEAM DETAILS**



**Beam intensity from 1-20m**

1m	2m	3m	4m	5m	6m	7m	8m	9m	10m	11m	12m	13m	14m	15m	16m	17m	18m	19m	20m
3.3ft	6.6ft	9.8ft	13.1ft	16.4ft	19.7ft	23ft	26.2ft	29.5ft	32.8ft	36.1ft	39.4ft	42.7ft	45.9ft	49.2ft	52.5ft	55.8ft	59.1ft	62.3ft	65.6ft
9787lx	2447lx	1087lx	612lx	391lx	272lx	200lx	153lx	121lx	98lx	81lx	68lx	58lx	50lx	43lx	38lx	34lx	30lx	27lx	24lx
909.3fc	227.3fc	101fc	56.8fc	36.4fc	25.3fc	18.6fc	14.2fc	11.2fc	9.1fc	7.5fc	6.3fc	5.4fc	4.6fc	4fc	3.6fc	3.1fc	2.8fc	2.5fc	2.3fc

**Intensity in 0° c-plane**

0°	1°	2°	3°	4°	5°	6°	7°	8°	9°	10°	11°	12°	13°	14°	15°	16°	17°	18°	19°
9787	9027	6918	4565	2747	1619	1096	861	719	612	527	457	399	352	313	278	242	208	181	159
100%	92%	71%	47%	28%	17%	11%	9%	7%	6%	5%	5%	4%	4%	3%	3%	2%	2%	2%	2%

**Intensity in 90° c-plane**

0°	1°	2°	3°	4°	5°	6°	7°	8°	9°	10°	11°	12°	13°	14°	15°	16°	17°	18°	19°
9787	9767	9708	9611	9478	9310	9103	8861	8589	8287	7953	7596	7218	6821	6406	5980	5550	5118	4688	4266
100%	100%	99%	98%	97%	95%	93%	91%	88%	85%	81%	78%	74%	70%	65%	61%	57%	52%	48%	44%

**Intensity in 180° c-plane**

0°	1°	2°	3°	4°	5°	6°	7°	8°	9°	10°	11°	12°	13°	14°	15°	16°	17°	18°	19°
9787	9027	6918	4565	2747	1619	1096	861	719	612	527	457	399	352	313	278	242	208	181	159
100%	92%	71%	47%	28%	17%	11%	9%	7%	6%	5%	5%	4%	4%	3%	3%	2%	2%	2%	2%

**Intensity in 270° c-plane**

0°	1°	2°	3°	4°	5°	6°	7°	8°	9°	10°	11°	12°	13°	14°	15°	16°	17°	18°	19°
9787	9767	9708	9611	9478	9310	9103	8861	8589	8287	7953	7596	7218	6821	6406	5980	5550	5118	4688	4266
100%	100%	99%	98%	97%	95%	93%	91%	88%	85%	81%	78%	74%	70%	65%	61%	57%	52%	48%	44%