

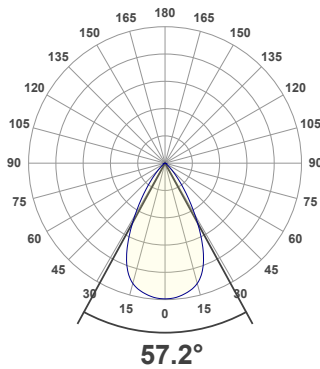
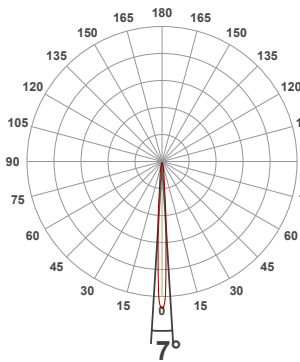


**PRODUCT INFORMATION**

MEASUREMENT SERIAL NUMBER:	PH-GVA-2024.Jun.25-3596-VO
DATE OF MEASUREMENT:	6/25/2024
MANUFACTURER:	GVA LIGHTING, INC.
PRODUCT NAME:	STR10 ARCHITECTURAL
SIZE (width x length x height):	49 mm x 300 mm x 61 mm
LOT:	XPEBWT-H1-0000-00CZ7
PROFILE LEGEND:	PIXEL RESOLUTION: R150/200/300 – PIXEL SIZE 150/200/300 mm
CM – CLEAR MATTE, BM – BLACK MATTE, CU – CUSTOM COLOR	VOLTAGE LEGEND: INF – INFINITY 380 V DC, ELV – 48 V DC
INTERNAL ACCESSORIES: NL – NO LOUVER, ML – MICRO LOUVER	

**ANGULAR DISTRIBUTION AT C0/180**

**ANGULAR DISTRIBUTION AT C90/270**



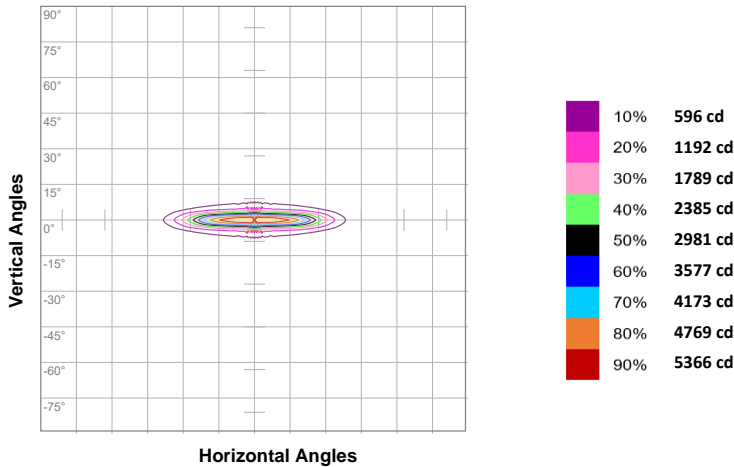
**LIGHT OUTPUT DATA**

TOTAL LUMEN OUTPUT:	938 lm
EFFICACY:	47 lm/W
PEAK INTENSITY:	6128 cd
COLOR RENDERING INDEX (CRI):	79.2
COLOR TEMPERATURE (CCT):	3073K
FIDELITY INDEX (TM30Rf):	81.2
GAMUT INDEX (TM30Rg):	97.4

**BEAM OUTPUT DATA**

BEAM ANGLE (FWHM)   C0/180:	7°
BEAM ANGLE (FWHM)   C90/270:	57.2°
FIELD ANGLE (10%)   C0/180:	17.3°
FIELD ANGLE (10%)   C90/270:	85.3°
NUMBER OF PLANES MEASURED:	36

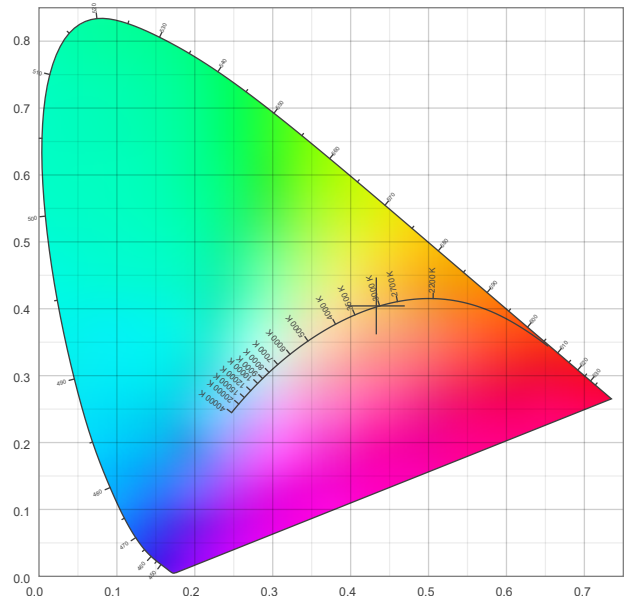
**ISOCANDELA DIAGRAM**



**POWER OUTPUT DATA**

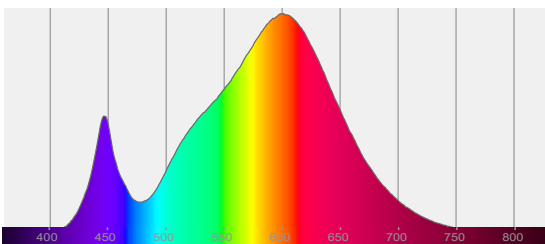
INPUT POWER:	19.9 W
INPUT VOLTAGE:	380 V DC
INPUT CURRENT:	0.052 A
POWER FACTOR:	1.0
OPTICAL POWER:	2.79 mW
PEAK WAVELENGTH:	599 nm
DOMINANT WAVELENGTH:	583 nm

**CIE 1931**



**SPECTRAL DISTRIBUTION**

**CIE 1931 ZOOM**



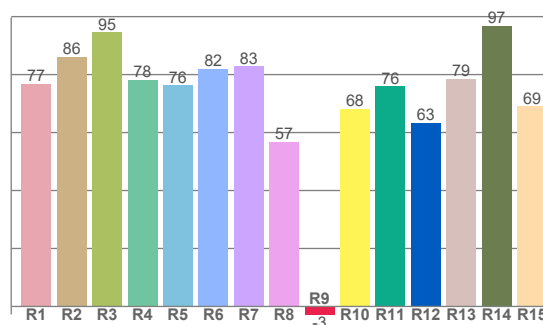
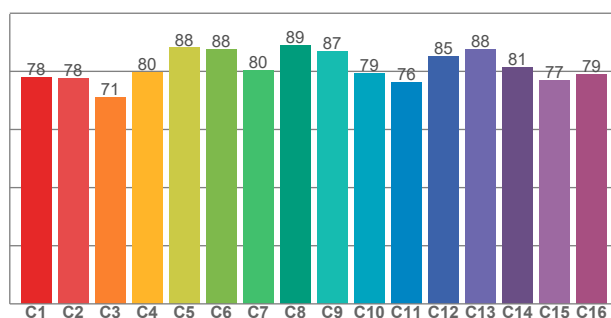
ZONAL LUMEN SUMMARY

0°-10° 251 lm	10°-20° 289 lm	20°-30° 217 lm	30°-40° 114 lm	40°-50° 45.6 lm	50°-60° 15.8 lm	60°-70° 4.55 lm	70°-80° 0.470 lm	80°-90° 0.002 lm
90°-100° 0.001 lm	100°-110° 0.000 lm	110°-120° 0.000 lm	120°-130° 0.000 lm	130°-140° 0.000 lm	140°-150° 0.000 lm	150°-160° 0.000 lm	160°-170° 0.000 lm	170°-180° 0.000 lm

COLOR DETAILS

TM30: 81.2

CRI: 79.2 (R1-R8)



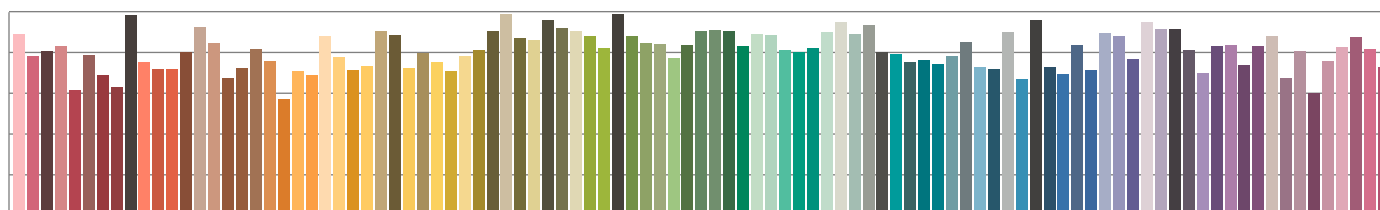
TM30 C values, 16 binned values out of total of 99 C values

CRI R values, only R1-R8 are used to calculate final CRI value

C1	C2	C3	C4	C5	C6	C7	C8	C9	C10	C11	C12	C13	C14	C15	C16
77.8	77.7	71.1	79.5	88.1	87.7	80.3	88.8	86.8	79.4	76.1	85.0	87.7	81.4	76.9	79.0

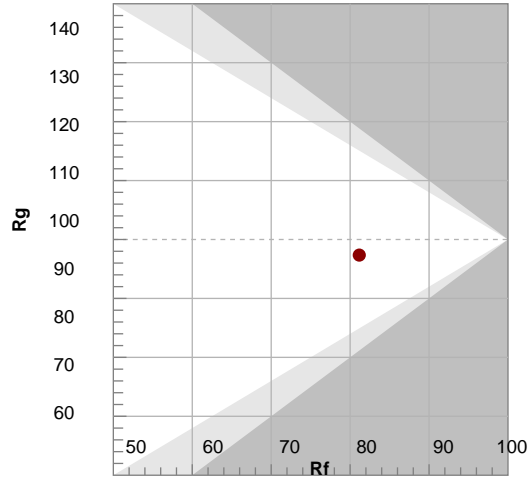
R1	R2	R3	R4	R5	R6	R7	R8	R9	R10	R11	R12	R13	R14	R15
76.8	86.2	94.5	78.0	76.3	81.9	82.8	56.8	-2.8	68.2	75.9	63.3	78.6	96.7	69.1

TM30 COLOR EVALUATION SAMPLE



TM30 DETAILS

Color	R1	R2	R3	R4	R5	R6	R7	R8	R9	R10	R11	R12	R13	R14	R15
Red	77	86	95	78	76	82	83	57	-3	68	76	63	79	97	69



FIDELITY INDEX

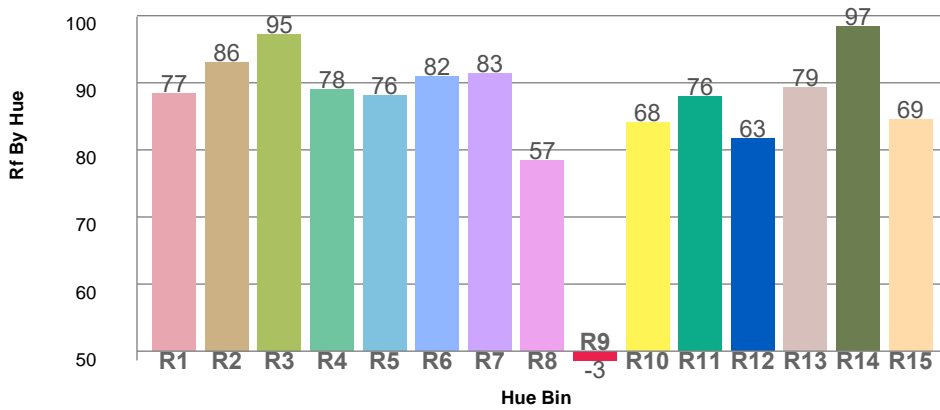
**Rf 81.2**

GAMUT INDEX

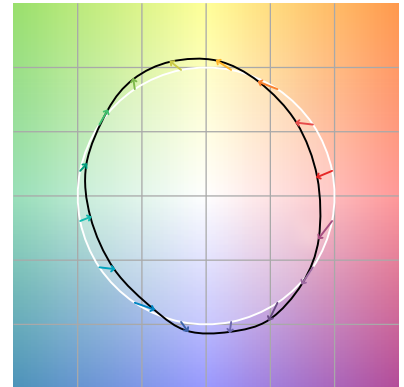
**Rg 97.4**

Approx. limits for sources on the Planckian locus.  
 Approx. limits for practical light sources.

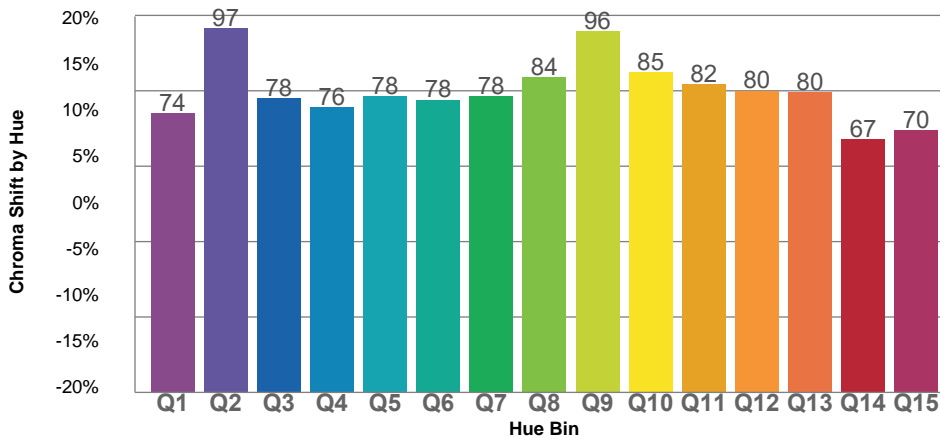
TM30 OVER 50



COLOR VECTOR GRAPHICS



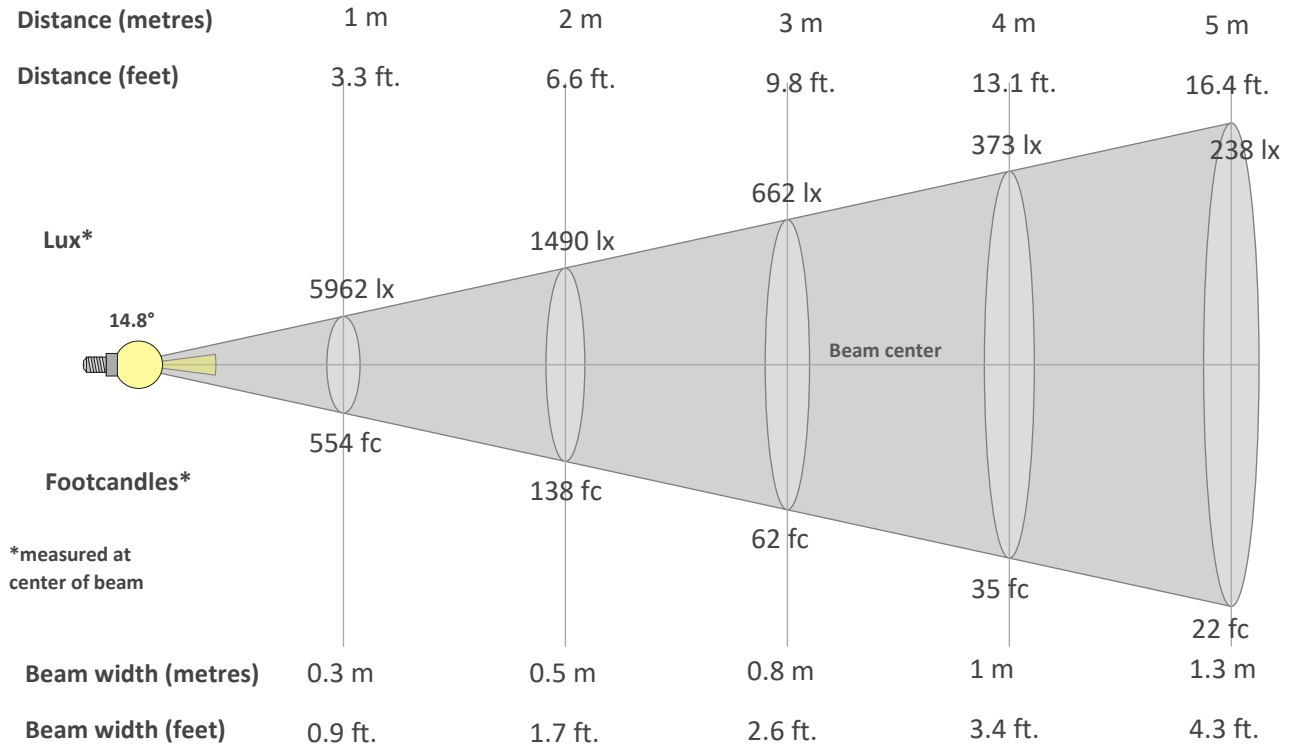
TM30 CHROMA SHIFT



COLOR DISTORTION GRAPHICS



**BEAM DETAILS**



**Beam intensity from 1-20m**

1m	2m	3m	4m	5m	6m	7m	8m	9m	10m	11m	12m	13m	14m	15m	16m	17m	18m	19m	20m
3.3ft	6.6ft	9.8ft	13.1ft	16.4ft	19.7ft	23ft	26.2ft	29.5ft	32.8ft	36.1ft	39.4ft	42.7ft	45.9ft	49.2ft	52.5ft	55.8ft	59.1ft	62.3ft	65.6ft
5962lx	1490lx	662lx	373lx	238lx	166lx	122lx	93lx	74lx	60lx	49lx	41lx	35lx	30lx	26lx	23lx	21lx	18lx	17lx	15lx
553.9fc	138.5fc	61.5fc	34.6fc	22.2fc	15.4fc	11.3fc	8.7fc	6.8fc	5.5fc	4.6fc	3.8fc	3.3fc	2.8fc	2.5fc	2.2fc	1.9fc	1.7fc	1.5fc	1.4fc

**Intensity in 0° c-plane**

0°	1°	2°	3°	4°	5°	6°	7°	8°	9°	10°	11°	12°	13°	14°	15°	16°	17°	18°	19°
5962	5839	4943	3611	2404	1769	1135	829	680	546	478	411	361	318	279	248	217	192	169	147
100%	98%	83%	61%	40%	30%	19%	14%	11%	9%	8%	7%	6%	5%	5%	4%	4%	3%	3%	2%

**Intensity in 90° c-plane**

0°	1°	2°	3°	4°	5°	6°	7°	8°	9°	10°	11°	12°	13°	14°	15°	16°	17°	18°	19°
5962	5944	5937	5929	5915	5894	5873	5841	5809	5774	5734	5695	5642	5590	5525	5447	5369	5254	5140	5004
100%	100%	100%	99%	99%	99%	99%	98%	97%	97%	96%	96%	95%	94%	93%	91%	90%	88%	86%	84%

**Intensity in 180° c-plane**

0°	1°	2°	3°	4°	5°	6°	7°	8°	9°	10°	11°	12°	13°	14°	15°	16°	17°	18°	19°
5962	5839	4943	3611	2404	1769	1135	829	680	546	478	411	361	318	279	248	217	192	169	147
100%	98%	83%	61%	40%	30%	19%	14%	11%	9%	8%	7%	6%	5%	5%	4%	4%	3%	3%	2%

**Intensity in 270° c-plane**

0°	1°	2°	3°	4°	5°	6°	7°	8°	9°	10°	11°	12°	13°	14°	15°	16°	17°	18°	19°
5962	5944	5937	5929	5915	5894	5873	5841	5809	5774	5734	5695	5642	5590	5525	5447	5369	5254	5140	5004
100%	100%	100%	99%	99%	99%	99%	98%	97%	97%	96%	96%	95%	94%	93%	91%	90%	88%	86%	84%