

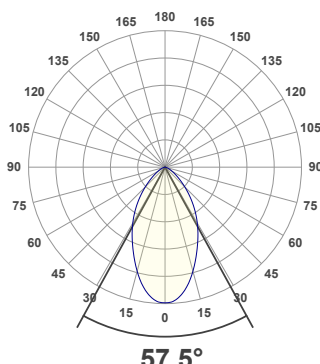
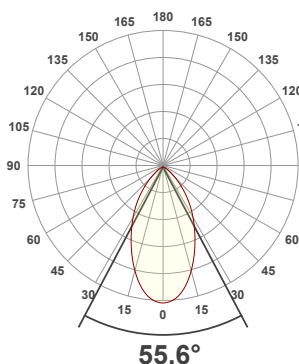


**PRODUCT INFORMATION**

MEASUREMENT SERIAL NUMBER:	PH-GVA-2024.Feb.27-2704-VO
DATE OF MEASUREMENT:	2/27/2024
MANUFACTURER:	GVA LIGHTING, INC.
PRODUCT NAME:	STR10 ARCHITECTURAL
SIZE (width x length x height):	49 mm x 300 mm x 61 mm
LOT:	sm303D300L2R8000
PROFILE LEGEND:	PIXEL RESOLUTION: R150/200/300 – PIXEL SIZE 150/200/300 mm
CM – CLEAR MATTE, BM – BLACK MATTE, CU – CUSTOM COLOR	VOLTAGE LEGEND: INF – INFINITY 380 V DC, ELV – 48 V DC
INTERNAL ACCESSORIES: NL – NO LOUVER, ML – MICRO LOUVER	

**ANGULAR DISTRIBUTION AT C0/180**

**ANGULAR DISTRIBUTION AT C90/270**



**LIGHT OUTPUT DATA**

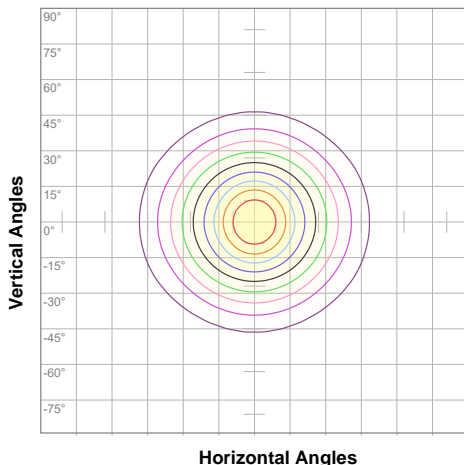
TOTAL LUMEN OUTPUT:	997 lm
EFFICACY:	50 lm/W
PEAK INTENSITY:	936 cd
COLOR RENDERING INDEX (CRI):	84.7
COLOR TEMPERATURE (CCT):	3052K
FIDELITY INDEX (TM30Rf):	84.7
GAMUT INDEX (TM30Rg):	95.5

**BEAM OUTPUT DATA**

BEAM ANGLE (FWHM)   C0/180:	55.6°
BEAM ANGLE (FWHM)   C90/270:	57.5°
FIELD ANGLE (10%)   C0/180:	103.3°
FIELD ANGLE (10%)   C90/270:	108°
NUMBER OF PLANES MEASURED:	36

**ISOCANDELA DIAGRAM**

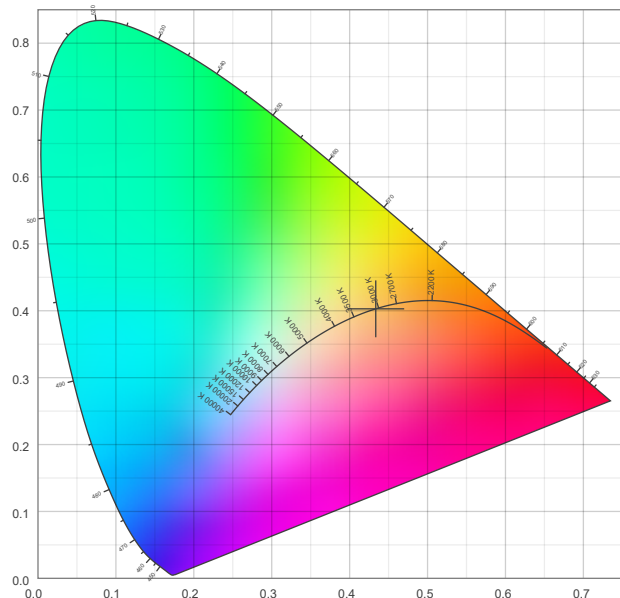
**POWER OUTPUT DATA**



10%	93 cd
20%	187 cd
30%	280 cd
40%	374 cd
50%	467 cd
60%	561 cd
70%	654 cd
80%	748 cd
90%	841 cd

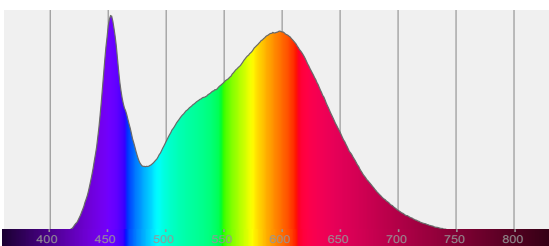
INPUT POWER:	19.9 W
INPUT VOLTAGE:	380 V DC
INPUT CURRENT:	0.052 A
POWER FACTOR:	1.0
OPTICAL POWER:	3.06 mW
PEAK WAVELENGTH:	452 nm
DOMINANT WAVELENGTH:	583 nm

**CIE 1931**



**SPECTRAL DISTRIBUTION**

**CIE 1931 ZOOM**



x:	0.434
y:	0.403
u:	0.249
v:	0.347
Δuv:	-0.0029

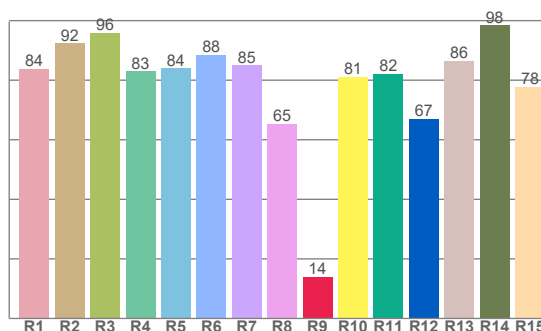
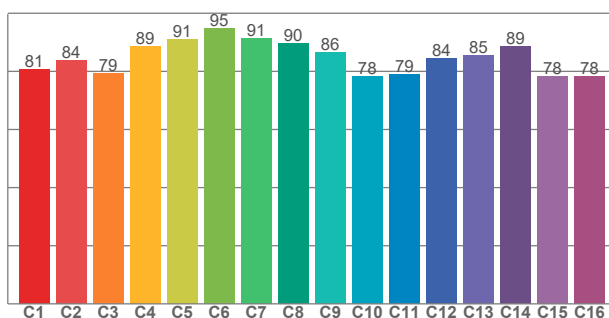
ZONAL LUMEN SUMMARY

0°-10° 84.9 lm	10°-20° 207 lm	20°-30° 243 lm	30°-40° 212 lm	40°-50° 137 lm	50°-60° 69.3 lm	60°-70° 32.3 lm	70°-80° 11.2 lm	80°-90° 0.849 lm
90°-100° 0.001 lm	100°-110° 0.000 lm	110°-120° 0.000 lm	120°-130° 0.000 lm	130°-140° 0.000 lm	140°-150° 0.000 lm	150°-160° 0.000 lm	160°-170° 0.000 lm	170°-180° 0.000 lm

COLOR DETAILS

TM30: 84.7

CRI: 84.7 (R1-R8)



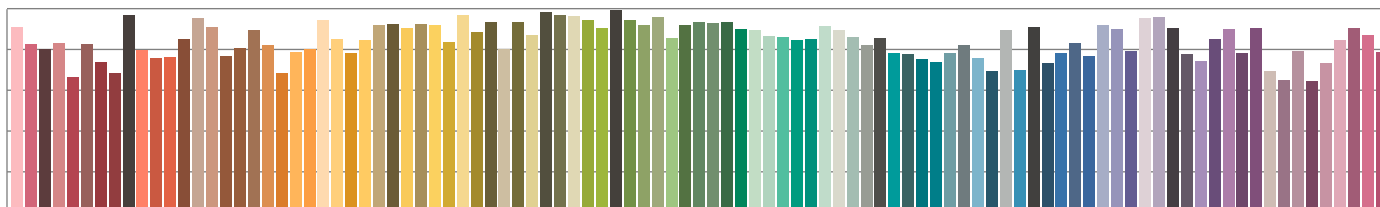
TM30 C values, 16 binned values out of total of 99 C values

CRI R values, only R1-R8 are used to calculate final CRI value

C1	C2	C3	C4	C5	C6	C7	C8	C9	C10	C11	C12	C13	C14	C15	C16
80.6	83.8	79.4	88.7	91.0	94.7	91.4	89.7	86.4	78.3	79.1	84.4	85.4	88.6	78.2	78.3

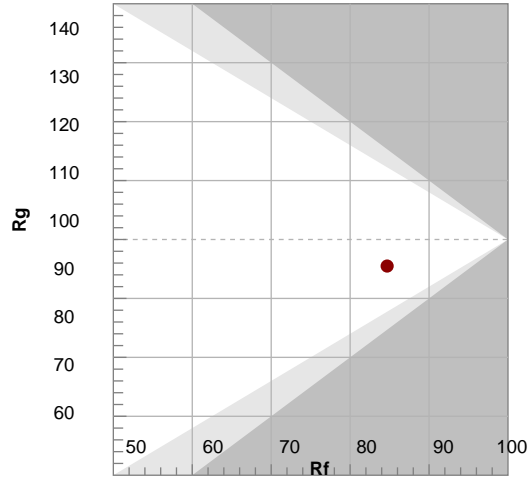
R1	R2	R3	R4	R5	R6	R7	R8	R9	R10	R11	R12	R13	R14	R15
83.9	92.3	95.8	82.9	83.9	88.4	85.0	65.3	13.9	81.0	82.2	67.1	86.4	98.4	77.7

TM30 COLOR EVALUATION SAMPLE



TM30 DETAILS

Color	Rf	Rg	Ra	Ri
1	100	100	100	100
2	100	100	100	100
3	100	100	100	100
4	100	100	100	100
5	100	100	100	100
6	100	100	100	100
7	100	100	100	100
8	100	100	100	100
9	100	100	100	100
10	100	100	100	100
11	100	100	100	100
12	100	100	100	100
13	100	100	100	100
14	100	100	100	100
15	100	100	100	100



FIDELITY INDEX

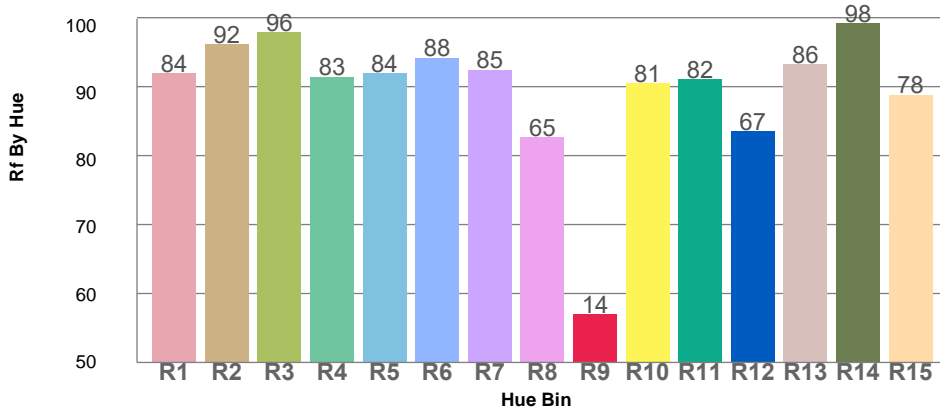
**Rf 84.7**

GAMUT INDEX

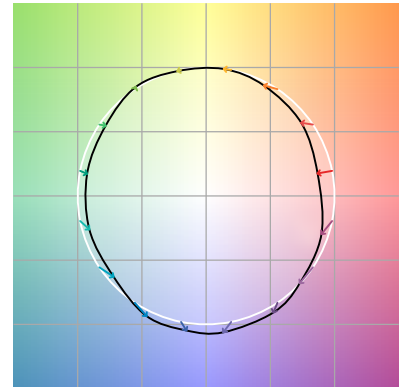
**Rg 95.5**

Approx. limits for sources on the Planckian locus.  
Approx. limits for practical light sources.

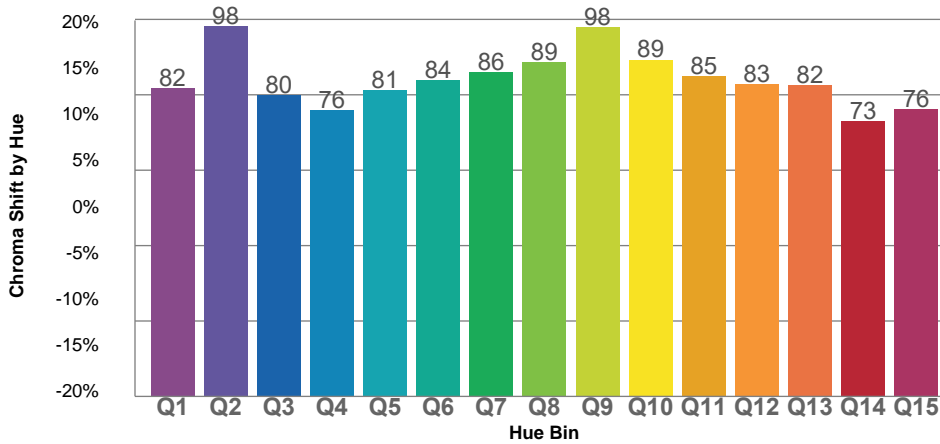
TM30 OVER 50



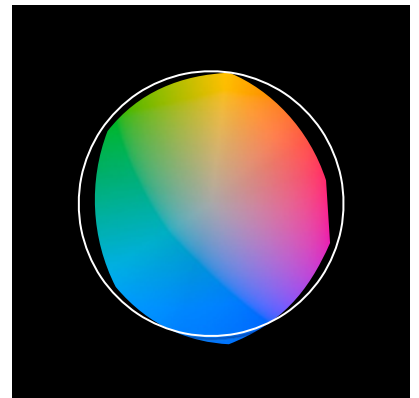
COLOR VECTOR GRAPHICS



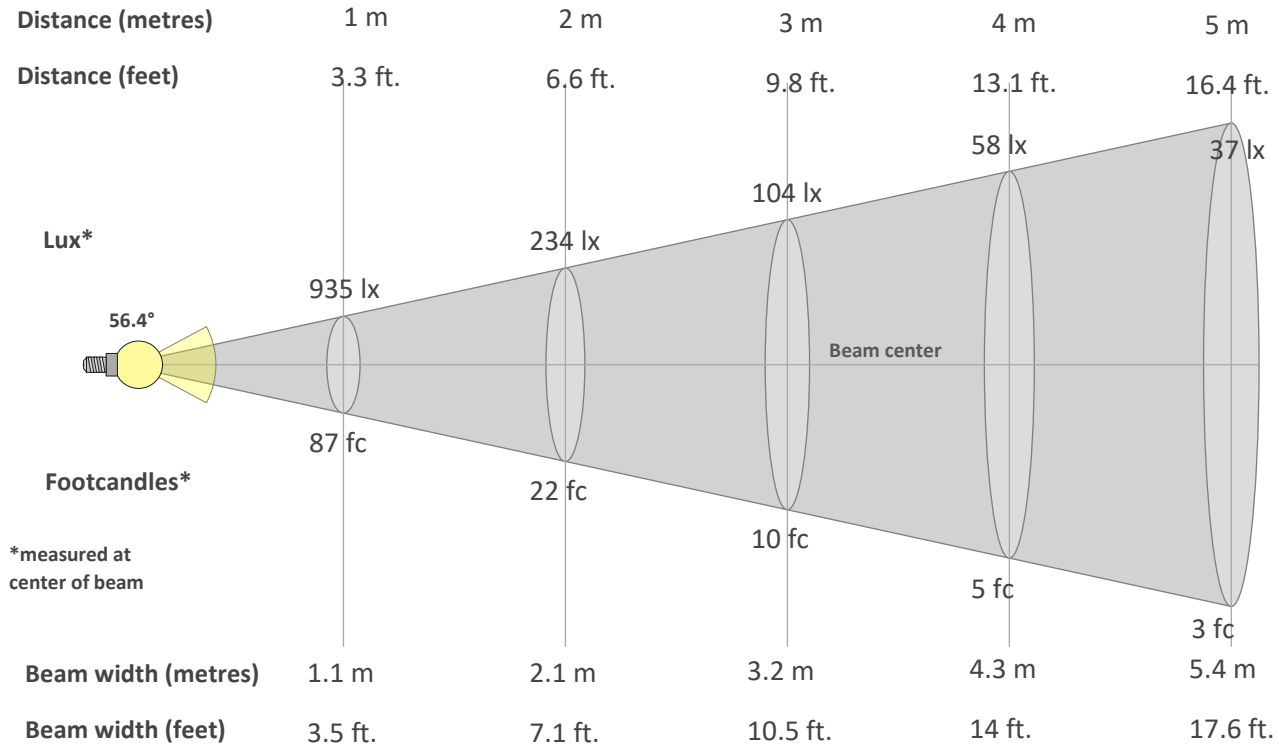
TM30 CHROMA SHIFT



COLOR DISTORTION GRAPHICS



**BEAM DETAILS**



**Beam intensity from 1-20m**

1m	2m	3m	4m	5m	6m	7m	8m	9m	10m	11m	12m	13m	14m	15m	16m	17m	18m	19m	20m
3.3ft	6.6ft	9.8ft	13.1ft	16.4ft	19.7ft	23ft	26.2ft	29.5ft	32.8ft	36.1ft	39.4ft	42.7ft	45.9ft	49.2ft	52.5ft	55.8ft	59.1ft	62.3ft	65.6ft
935lx	234lx	104lx	58lx	37lx	26lx	19lx	15lx	12lx	9lx	8lx	6lx	6lx	5lx	4lx	4lx	3lx	3lx	3lx	2lx
86.8fc	21.7fc	9.6fc	5.4fc	3.5fc	2.4fc	1.8fc	1.4fc	1.1fc	0.9fc	0.7fc	0.6fc	0.5fc	0.4fc	0.4fc	0.3fc	0.3fc	0.3fc	0.2fc	0.2fc

**Intensity in 0° c-plane**

0°	5°	10°	15°	20°	25°	30°	35°	40°	45°	50°	55°	60°	65°	70°	75°	80°	85°	90°	95°
935	913	847	748	636	526	425	332	245	168	108	69	45	29	18	9	3	0	0	0
100%	98%	91%	80%	68%	56%	45%	36%	26%	18%	12%	7%	5%	3%	2%	1%	0%	0%	0%	0%

**Intensity in 90° c-plane**

0°	5°	10°	15°	20°	25°	30°	35°	40°	45°	50°	55°	60°	65°	70°	75°	80°	85°	90°	95°
935	909	839	739	632	534	443	354	268	192	130	85	55	35	21	11	4	0	0	0
100%	97%	90%	79%	68%	57%	47%	38%	29%	20%	14%	9%	6%	4%	2%	1%	0%	0%	0%	0%

**Intensity in 180° c-plane**

0°	5°	10°	15°	20°	25°	30°	35°	40°	45°	50°	55°	60°	65°	70°	75°	80°	85°	90°	95°
935	913	847	748	636	526	425	332	245	168	108	69	45	29	18	9	3	0	0	0
100%	98%	91%	80%	68%	56%	45%	36%	26%	18%	12%	7%	5%	3%	2%	1%	0%	0%	0%	0%

**Intensity in 270° c-plane**

0°	5°	10°	15°	20°	25°	30°	35°	40°	45°	50°	55°	60°	65°	70°	75°	80°	85°	90°	95°
935	909	839	739	632	534	443	354	268	192	130	85	55	35	21	11	4	0	0	0
100%	97%	90%	79%	68%	57%	47%	38%	29%	20%	14%	9%	6%	4%	2%	1%	0%	0%	0%	0%