

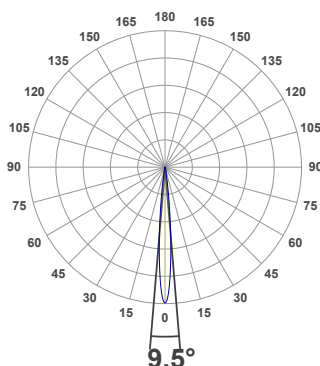
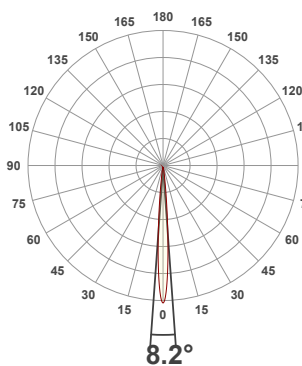


PRODUCT INFORMATION

MEASUREMENT SERIAL NUMBER:	VFR-230925-1613-MS
DATE OF MEASUREMENT:	9/25/2023
MANUFACTURER:	GVA LIGHTING, INC.
PRODUCT NAME:	STR10 ARCHITECTURAL
SIZE (width x length x height):	49 mm x 300 mm x 61 mm
LOT:	XPEBWT-H1-0000-00CZ7
PROFILE LEGEND:	PIXEL RESOLUTION: R150/200/300 – PIXEL SIZE 150/200/300 mm
CM – CLEAR MATTE, BM – BLACK MATTE, CU – CUSTOM COLOR	VOLTAGE LEGEND: INF – INFINITY 380 V DC, ELV – 48 V DC
INTERNAL ACCESSORIES: NL – NO LOUVER, ML – MICRO LOUVER	

ANGULAR DISTRIBUTION AT C0/180

ANGULAR DISTRIBUTION AT C90/270



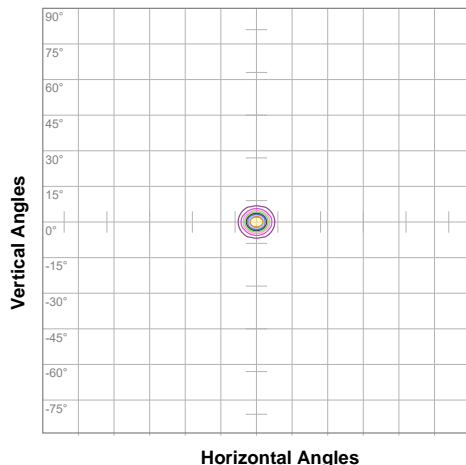
LIGHT OUTPUT DATA

TOTAL LUMEN OUTPUT:	898 lm
EFFICACY:	45 lm/W
PEAK INTENSITY:	25887 cd
COLOR RENDERING INDEX (CRI):	79.6
COLOR TEMPERATURE (CCT):	3035K
FIDELITY INDEX (TM30Rf):	82.1
GAMUT INDEX (TM30Rg):	96.5

BEAM OUTPUT DATA

BEAM ANGLE (FWHM) C0/180:	8.2°
BEAM ANGLE (FWHM) C90/270:	9.5°
FIELD ANGLE (10%) C0/180:	15.9°
FIELD ANGLE (10%) C90/270:	17.6°
NUMBER OF PLANES MEASURED:	18

ISOCANDELA DIAGRAM

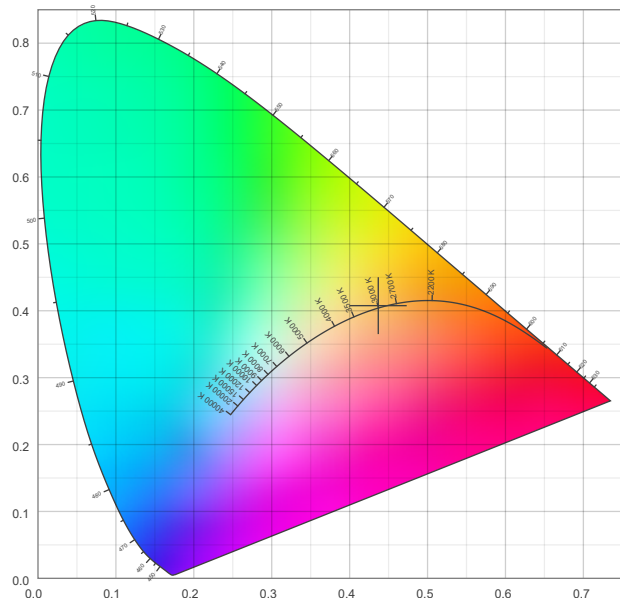


10%	2587 cd
20%	5174 cd
30%	7761 cd
40%	10348 cd
50%	12935 cd
60%	15522 cd
70%	18109 cd
80%	20695 cd
90%	23282 cd

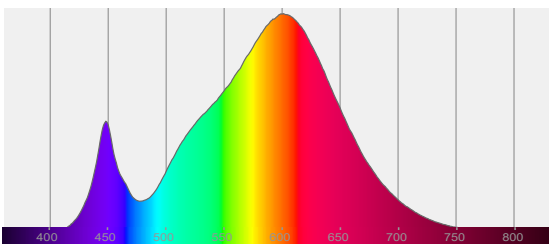
POWER OUTPUT DATA

INPUT POWER:	19.9 W
INPUT VOLTAGE:	380 V DC
INPUT CURRENT:	0.052 A
POWER FACTOR:	1.0
OPTICAL POWER:	2.67 mW
PEAK WAVELENGTH:	601 nm
DOMINANT WAVELENGTH:	583 nm

CIE 1931



SPECTRAL DISTRIBUTION



CIE 1931 ZOOM

x: 0.437
y: 0.408
u: 0.249
v: 0.348
Δuv: 0.0014

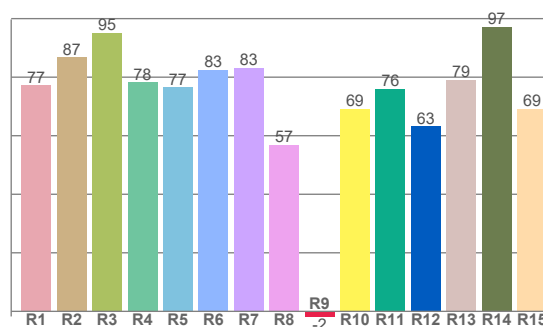
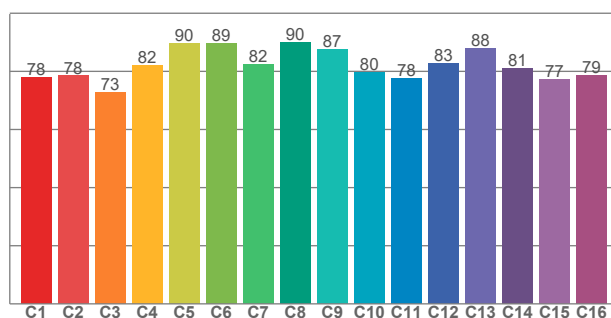
ZONAL LUMEN SUMMARY

0°-10° 694 lm	10°-20° 144 lm	20°-30° 46.3 lm	30°-40° 12.2 lm	40°-50° 1.36 lm	50°-60° 0.012 lm	60°-70° 0.004 lm	70°-80° 0.003 lm	80°-90° 0.003 lm
90°-100° 0.001 lm	100°-110° 0.000 lm	110°-120° 0.000 lm	120°-130° 0.000 lm	130°-140° 0.000 lm	140°-150° 0.000 lm	150°-160° 0.000 lm	160°-170° 0.000 lm	170°-180° 0.000 lm

COLOR DETAILS

TM30: 82.1

CRI: 79.6 (R1-R8)



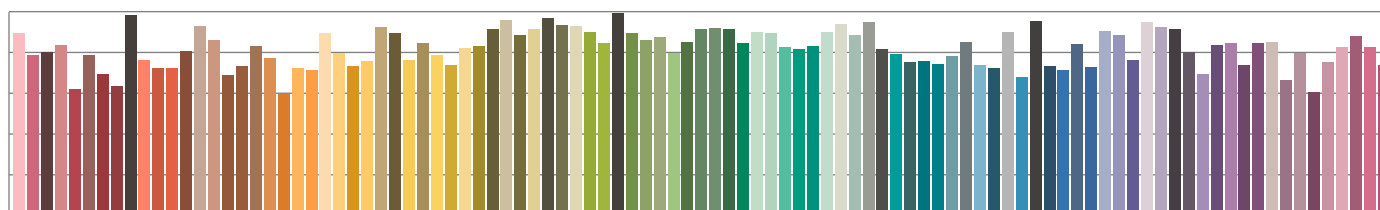
TM30 C values, 16 binned values out of total of 99 C values

CRI R values, only R1-R8 are used to calculate final CRI value

C1	C2	C3	C4	C5	C6	C7	C8	C9	C10	C11	C12	C13	C14	C15	C16
78.1	78.5	72.8	82.2	89.7	89.5	82.4	89.9	87.4	79.7	77.7	82.8	88.1	81.1	77.4	78.5

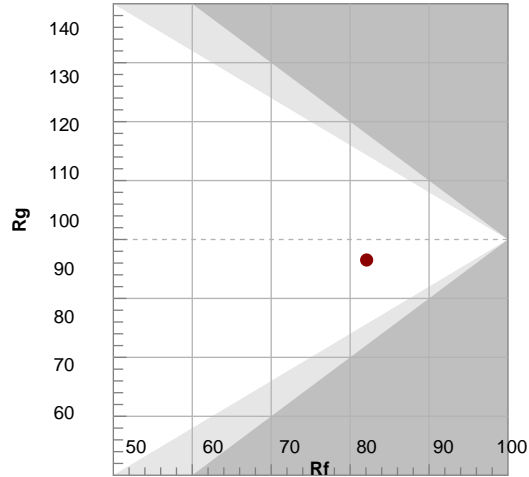
R1	R2	R3	R4	R5	R6	R7	R8	R9	R10	R11	R12	R13	R14	R15
77.1	86.7	95.2	78.2	76.5	82.6	83.2	56.9	-1.7	69.2	76.1	63.1	79.0	97.1	69.2

TM30 COLOR EVALUATION SAMPLE



TM30 DETAILS

Color	R1	R2	R3	R4	R5	R6	R7	R8	R9	R10	R11	R12	R13	R14	R15
Red	77	87	95	78	77	83	83	57	-2	69	76	63	79	97	69



FIDELITY INDEX

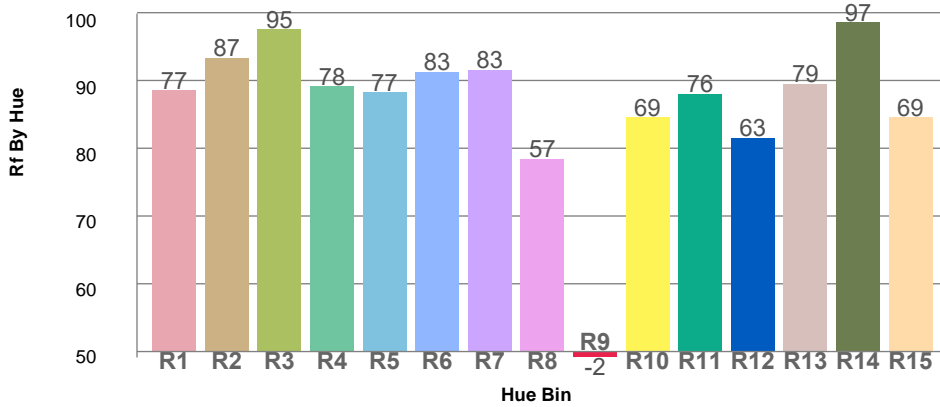
Rf 82.1

GAMUT INDEX

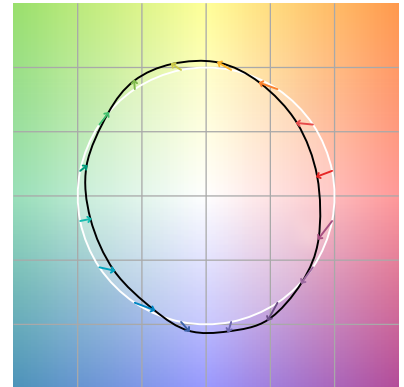
Rg 96.5

Approx. limits for sources on the Planckian locus.
Approx. limits for practical light sources.

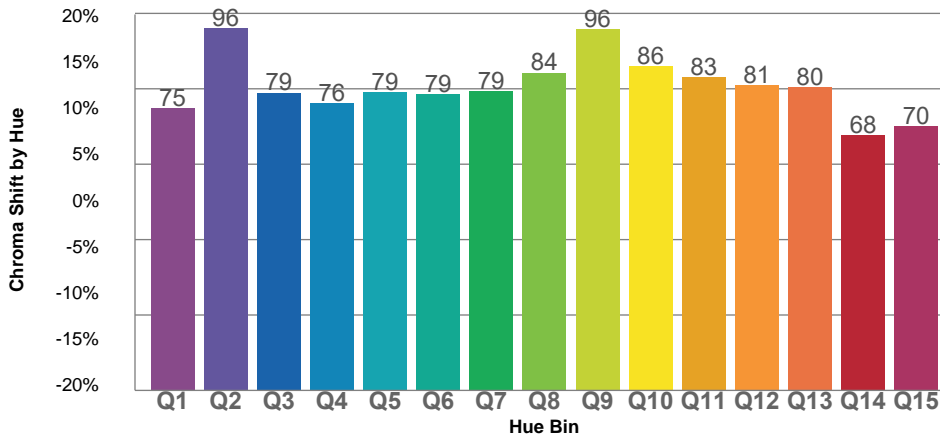
TM30 OVER 50



COLOR VECTOR GRAPHICS



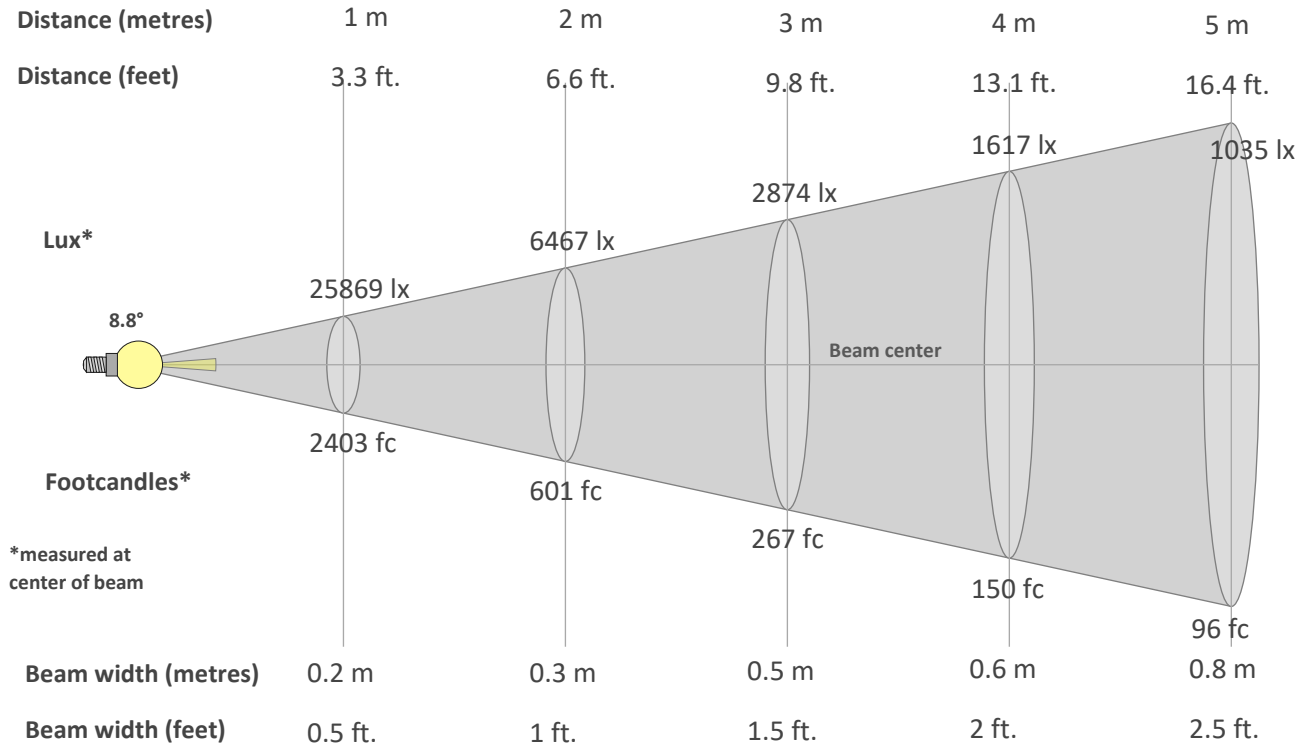
TM30 CHROMA SHIFT



COLOR DISTORTION GRAPHICS



BEAM DETAILS



Beam intensity from 1-20m

1m	2m	3m	4m	5m	6m	7m	8m	9m	10m	11m	12m	13m	14m	15m	16m	17m	18m	19m	20m
3.3ft	6.6ft	9.8ft	13.1ft	16.4ft	19.7ft	23ft	26.2ft	29.5ft	32.8ft	36.1ft	39.4ft	42.7ft	45.9ft	49.2ft	52.5ft	55.8ft	59.1ft	62.3ft	65.6ft
25869lx	6467lx	2874lx	1617lx	1035lx	719lx	528lx	404lx	319lx	259lx	214lx	180lx	153lx	132lx	115lx	101lx	90lx	80lx	72lx	65lx
2403.3fc	600.8fc	267fc	150.2fc	96.1fc	66.8fc	49fc	37.6fc	29.7fc	24fc	19.9fc	16.7fc	14.2fc	12.3fc	10.7fc	9.4fc	8.3fc	7.4fc	6.7fc	6fc

Intensity in 0° c-plane

0°	1°	2°	3°	4°	5°	6°	7°	8°	9°	10°	11°	12°	13°	14°	15°	16°	17°	18°	19°
25.9K	24.8K	21.9K	17.8K	13.3K	9.2K	6.0K	3.9K	2.5K	1.7K	1.3K	1.0K	0.8K	0.7K	0.5K	0.5K	0.4K	0.3K	0.3K	0.2K
100%	96%	85%	69%	51%	36%	23%	15%	10%	7%	5%	4%	3%	3%	2%	2%	2%	1%	1%	1%

Intensity in 90° c-plane

0°	1°	2°	3°	4°	5°	6°	7°	8°	9°	10°	11°	12°	13°	14°	15°	16°	17°	18°	19°
25.9K	25.1K	22.9K	19.6K	15.8K	12.0K	8.5K	5.7K	3.7K	2.4K	1.6K	1.1K	0.9K	0.7K	0.6K	0.5K	0.4K	0.4K	0.3K	0.3K
100%	97%	88%	76%	61%	46%	33%	22%	14%	9%	6%	4%	3%	3%	2%	2%	2%	1%	1%	1%

Intensity in 180° c-plane

0°	1°	2°	3°	4°	5°	6°	7°	8°	9°	10°	11°	12°	13°	14°	15°	16°	17°	18°	19°
25.9K	24.8K	21.9K	17.8K	13.3K	9.2K	6.0K	3.9K	2.5K	1.7K	1.3K	1.0K	0.8K	0.7K	0.5K	0.5K	0.4K	0.3K	0.3K	0.2K
100%	96%	85%	69%	51%	36%	23%	15%	10%	7%	5%	4%	3%	3%	2%	2%	2%	1%	1%	1%

Intensity in 270° c-plane

0°	1°	2°	3°	4°	5°	6°	7°	8°	9°	10°	11°	12°	13°	14°	15°	16°	17°	18°	19°
25.9K	25.1K	22.9K	19.6K	15.8K	12.0K	8.5K	5.7K	3.7K	2.4K	1.6K	1.1K	0.9K	0.7K	0.6K	0.5K	0.4K	0.4K	0.3K	0.3K
100%	97%	88%	76%	61%	46%	33%	22%	14%	9%	6%	4%	3%	3%	2%	2%	2%	1%	1%	1%