

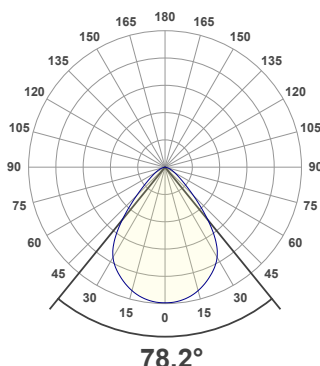
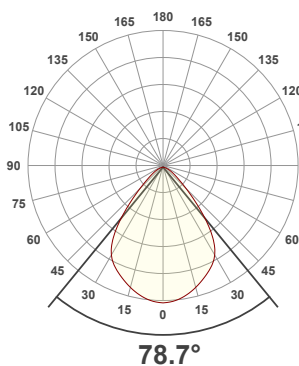


PRODUCT INFORMATION

MEASUREMENT SERIAL NUMBER:	PH-GVA-2024.Feb.27-2703-VO
DATE OF MEASUREMENT:	2/27/2024
MANUFACTURER:	GVA LIGHTING, INC.
PRODUCT NAME:	STR10 ARCHITECTURAL
SIZE (width x length x height):	49 mm x 300 mm x 61 mm
LOT:	sm303D300L2R8000
PROFILE LEGEND:	PIXEL RESOLUTION: R150/200/300 – PIXEL SIZE 150/200/300 mm
INTERNAL ACCESSORIES:	VOLTAGE LEGEND: INF – INFINITY 380 V DC, ELV – 48 V DC
ML – MICRO LOUVER	

ANGULAR DISTRIBUTION AT C0/180

ANGULAR DISTRIBUTION AT C90/270



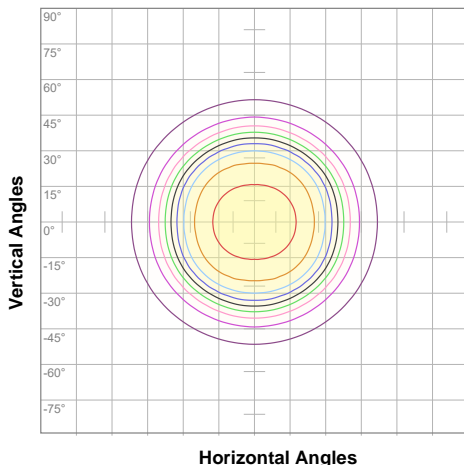
LIGHT OUTPUT DATA

TOTAL LUMEN OUTPUT:	980 lm
EFFICACY:	49 lm/W
PEAK INTENSITY:	623 cd
COLOR RENDERING INDEX (CRI):	84.6
COLOR TEMPERATURE (CCT):	3050K
FIDELITY INDEX (TM30Rf):	84.6
GAMUT INDEX (TM30Rg):	95.5

BEAM OUTPUT DATA

BEAM ANGLE (FWHM) C0/180:	78.7°
BEAM ANGLE (FWHM) C90/270:	78.2°
FIELD ANGLE (10%) C0/180:	114.5°
FIELD ANGLE (10%) C90/270:	115.2°
NUMBER OF PLANES MEASURED:	36

ISOCANDELA DIAGRAM

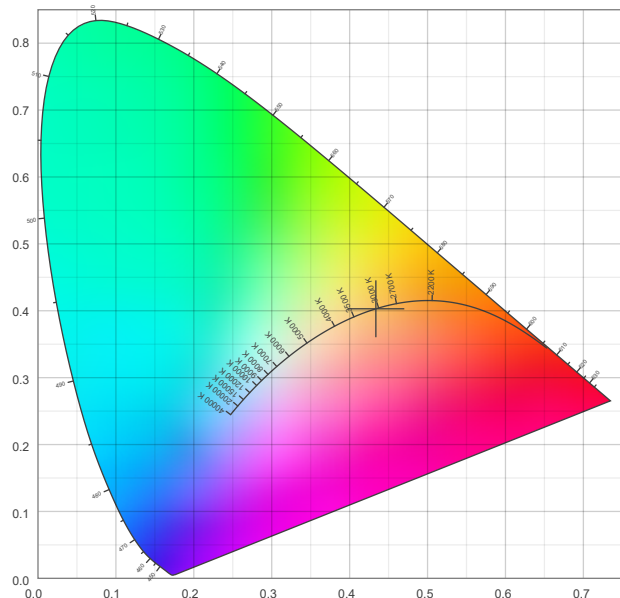


10%	62 cd
20%	125 cd
30%	187 cd
40%	249 cd
50%	312 cd
60%	374 cd
70%	436 cd
80%	499 cd
90%	561 cd

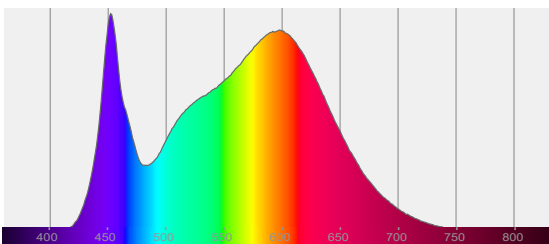
POWER OUTPUT DATA

INPUT POWER:	19.9 W
INPUT VOLTAGE:	380 V DC
INPUT CURRENT:	0.052 A
POWER FACTOR:	1.0
OPTICAL POWER:	3.01 mW
PEAK WAVELENGTH:	452 nm
DOMINANT WAVELENGTH:	583 nm

CIE 1931



SPECTRAL DISTRIBUTION



CIE 1931 ZOOM

x:	0.434
y:	0.403
u:	0.249
v:	0.347
Δuv:	-0.0029

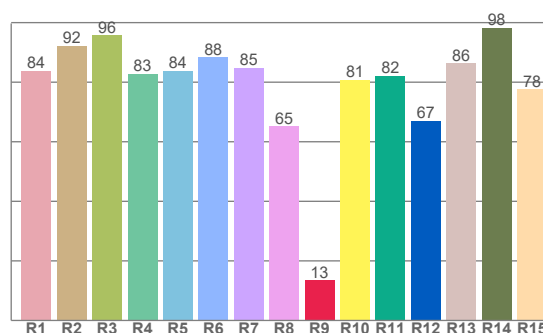
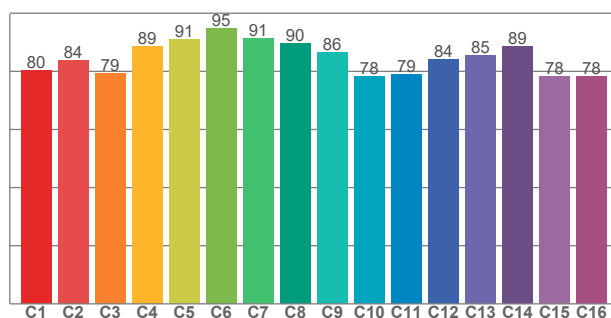
ZONAL LUMEN SUMMARY

0°-10° 58.5 lm	10°-20° 164 lm	20°-30° 240 lm	30°-40° 251 lm	40°-50° 147 lm	50°-60° 71.0 lm	60°-70° 35.0 lm	70°-80° 12.7 lm	80°-90° 0.838 lm
90°-100° 0.000 lm	100°-110° 0.000 lm	110°-120° 0.000 lm	120°-130° 0.000 lm	130°-140° 0.000 lm	140°-150° 0.000 lm	150°-160° 0.000 lm	160°-170° 0.000 lm	170°-180° 0.000 lm

COLOR DETAILS

TM30: 84.6

CRI: 84.6 (R1-R8)



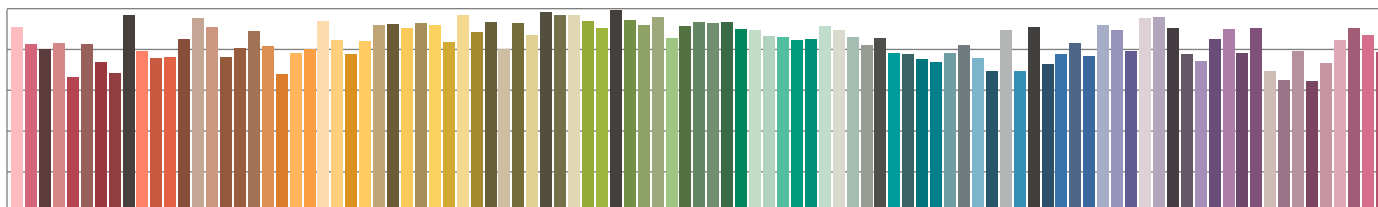
TM30 C values, 16 binned values out of total of 99 C values

CRI R values, only R1-R8 are used to calculate final CRI value

C1	C2	C3	C4	C5	C6	C7	C8	C9	C10	C11	C12	C13	C14	C15	C16
80.5	83.6	79.2	88.6	90.9	94.7	91.4	89.7	86.4	78.1	79.0	84.3	85.4	88.6	78.2	78.3

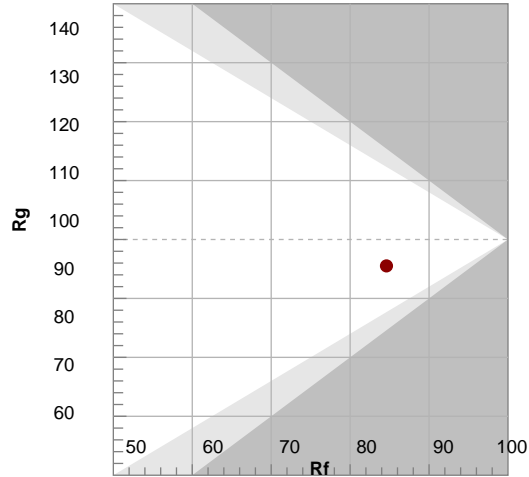
R1	R2	R3	R4	R5	R6	R7	R8	R9	R10	R11	R12	R13	R14	R15
83.8	92.2	95.7	82.8	83.8	88.3	84.9	65.2	13.5	80.7	82.1	66.9	86.3	98.3	77.6

TM30 COLOR EVALUATION SAMPLE



TM30 DETAILS

Bin	Color	Rf	CS
1	Red	84	82
2	Orange	92	98
3	Yellow	96	80
4	Green	83	76
5	Teal	84	81
6	Blue	88	84
7	Purple	85	86
8	Pink	65	89
9	Red	13	98
10	Yellow	81	89
11	Green	82	85
12	Blue	67	83
13	Orange	86	82
14	Yellow	98	73
15	Orange	78	76



FIDELITY INDEX

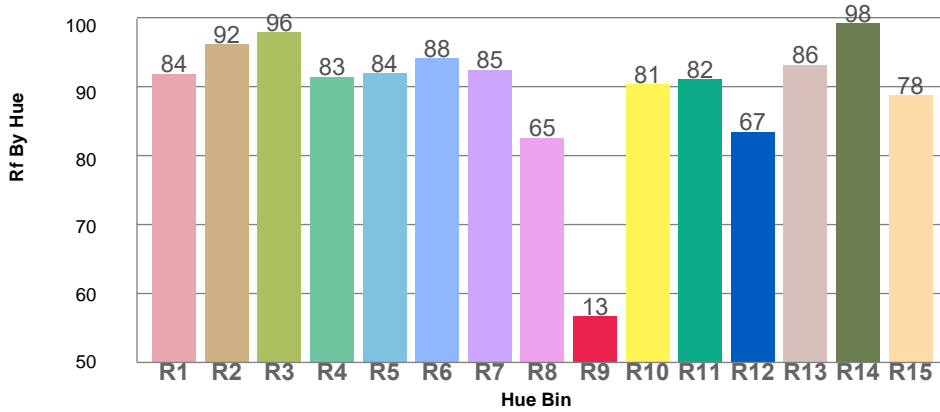
Rf 84.6

GAMUT INDEX

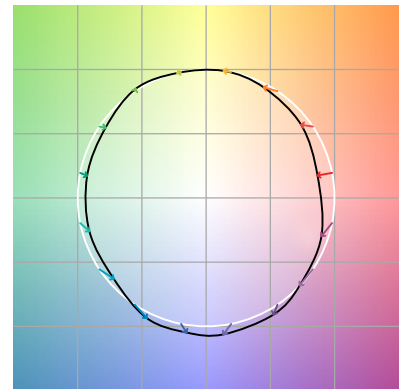
Rg 95.5

Approx. limits for sources on the Planckian locus.
Approx. limits for practical light sources.

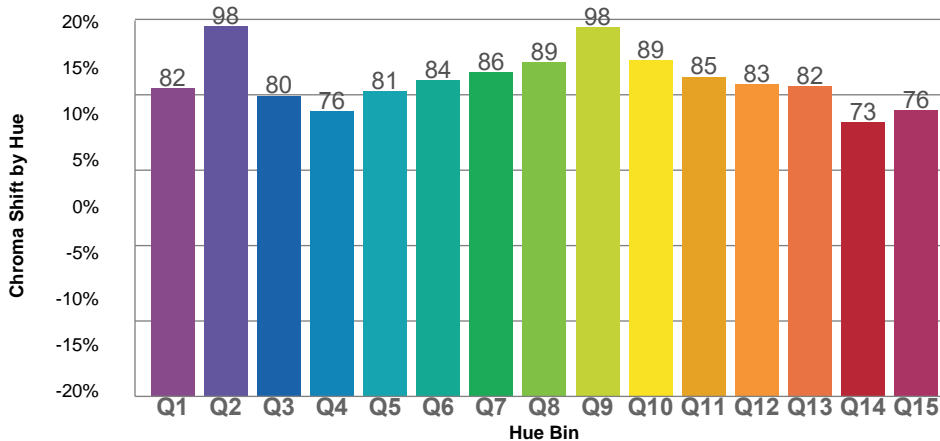
TM30 OVER 50



COLOR VECTOR GRAPHICS



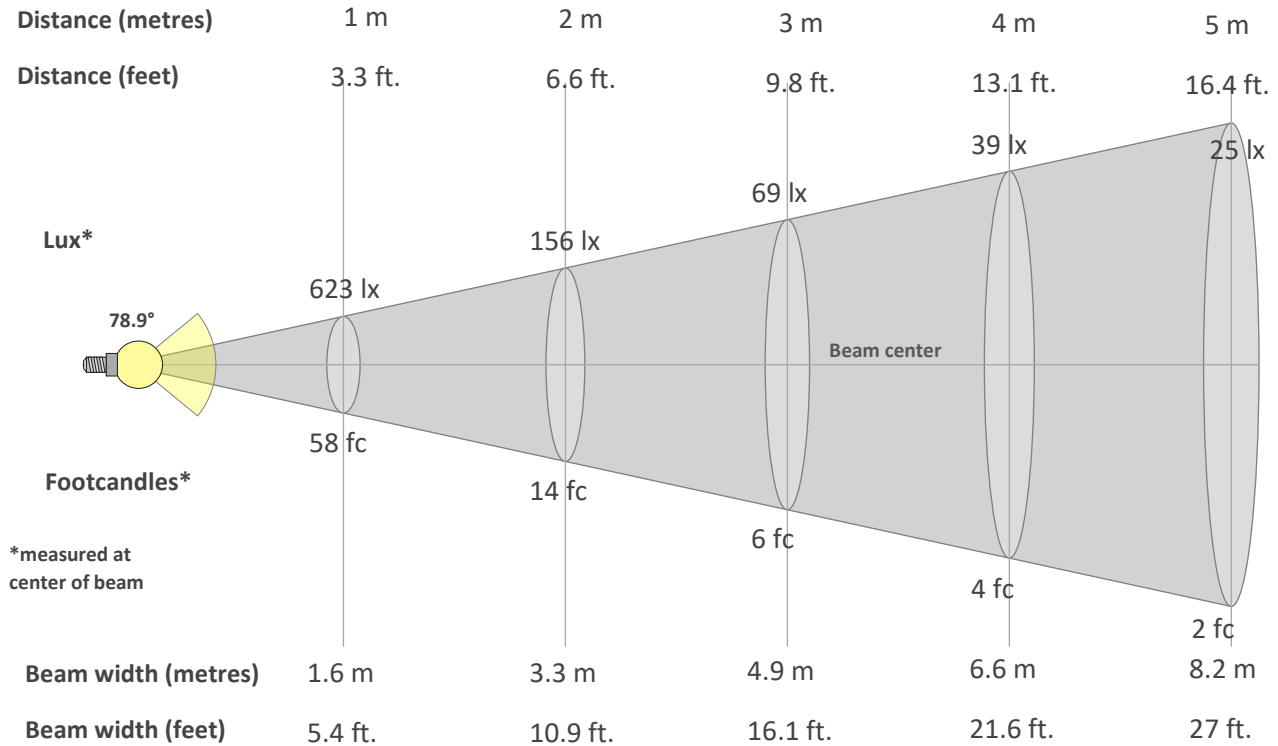
TM30 CHROMA SHIFT



COLOR DISTORTION GRAPHICS



BEAM DETAILS



Beam intensity from 1-20m

1m	2m	3m	4m	5m	6m	7m	8m	9m	10m	11m	12m	13m	14m	15m	16m	17m	18m	19m	20m
3.3ft	6.6ft	9.8ft	13.1ft	16.4ft	19.7ft	23ft	26.2ft	29.5ft	32.8ft	36.1ft	39.4ft	42.7ft	45.9ft	49.2ft	52.5ft	55.8ft	59.1ft	62.3ft	65.6ft
623lx	156lx	69lx	39lx	25lx	17lx	13lx	10lx	8lx	6lx	5lx	4lx	4lx	3lx	3lx	2lx	2lx	2lx	2lx	2lx
57.9fc	14.5fc	6.4fc	3.6fc	2.3fc	1.6fc	1.2fc	0.9fc	0.7fc	0.6fc	0.5fc	0.4fc	0.3fc	0.3fc	0.3fc	0.2fc	0.2fc	0.2fc	0.2fc	0.1fc

Intensity in 0° c-plane

0°	5°	10°	15°	20°	25°	30°	35°	40°	45°	50°	55°	60°	65°	70°	75°	80°	85°	90°	95°
623	616	599	575	546	516	476	406	296	187	115	74	50	34	21	11	3	0	0	0
100%	99%	96%	92%	88%	83%	76%	65%	47%	30%	18%	12%	8%	5%	3%	2%	1%	0%	0%	0%

Intensity in 90° c-plane

0°	5°	10°	15°	20°	25°	30°	35°	40°	45°	50°	55°	60°	65°	70°	75°	80°	85°	90°	95°
623	620	608	587	558	523	478	401	290	184	114	76	52	36	23	12	4	0	0	0
100%	99%	98%	94%	90%	84%	77%	64%	47%	30%	18%	12%	8%	6%	4%	2%	1%	0%	0%	0%

Intensity in 180° c-plane

0°	5°	10°	15°	20°	25°	30°	35°	40°	45°	50°	55°	60°	65°	70°	75°	80°	85°	90°	95°
623	616	599	575	546	516	476	406	296	187	115	74	50	34	21	11	3	0	0	0
100%	99%	96%	92%	88%	83%	76%	65%	47%	30%	18%	12%	8%	5%	3%	2%	1%	0%	0%	0%

Intensity in 270° c-plane

0°	5°	10°	15°	20°	25°	30°	35°	40°	45°	50°	55°	60°	65°	70°	75°	80°	85°	90°	95°
623	620	608	587	558	523	478	401	290	184	114	76	52	36	23	12	4	0	0	0
100%	99%	98%	94%	90%	84%	77%	64%	47%	30%	18%	12%	8%	6%	4%	2%	1%	0%	0%	0%