

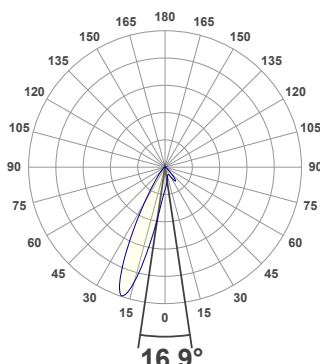
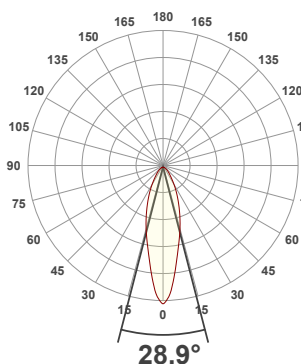


PRODUCT INFORMATION

MEASUREMENT SERIAL NUMBER:	PH-GVA-2024.Feb.26-2697-VO
DATE OF MEASUREMENT:	2/26/2024
MANUFACTURER:	GVA LIGHTING, INC.
PRODUCT NAME:	STR10 ARCHITECTURAL
SIZE (width x length x height):	49 mm x 300 mm x 61 mm
LOT:	sm303D300L2R8000
PROFILE LEGEND:	PIXEL RESOLUTION: CM – CLEAR MATTE, BM – BLACK MATTE, CU – CUSTOM COLOR
INTERNAL ACCESSORIES:	R150/200/300 – PIXEL SIZE 150/200/300 mm
NL – NO LOUVER, ML – MICRO LOUVER	VOLTAGE LEGEND: INF – INFINITY 380 V DC, ELV – 48 V DC

ANGULAR DISTRIBUTION AT C0/180

ANGULAR DISTRIBUTION AT C90/270



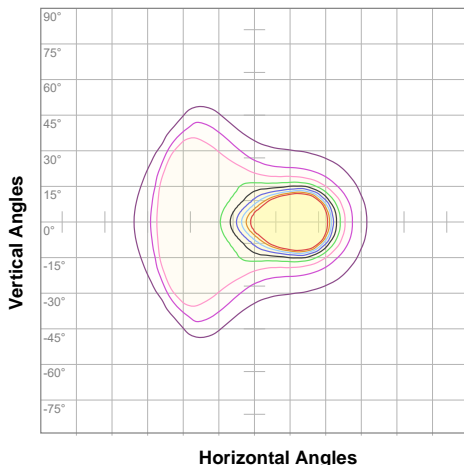
LIGHT OUTPUT DATA

TOTAL LUMEN OUTPUT:	1017 lm
EFFICACY:	51 lm/W
PEAK INTENSITY:	4827 cd
COLOR RENDERING INDEX (CRI):	83.9
COLOR TEMPERATURE (CCT):	3053K
FIDELITY INDEX (TM30Rf):	84.2
GAMUT INDEX (TM30Rg):	95.9

BEAM OUTPUT DATA

BEAM ANGLE (FWHM) C0/180:	28.9°
BEAM ANGLE (FWHM) C90/270:	16.9°
FIELD ANGLE (10%) C0/180:	76.1°
FIELD ANGLE (10%) C90/270:	78.1°
NUMBER OF PLANES MEASURED:	36

ISOCANDELA DIAGRAM

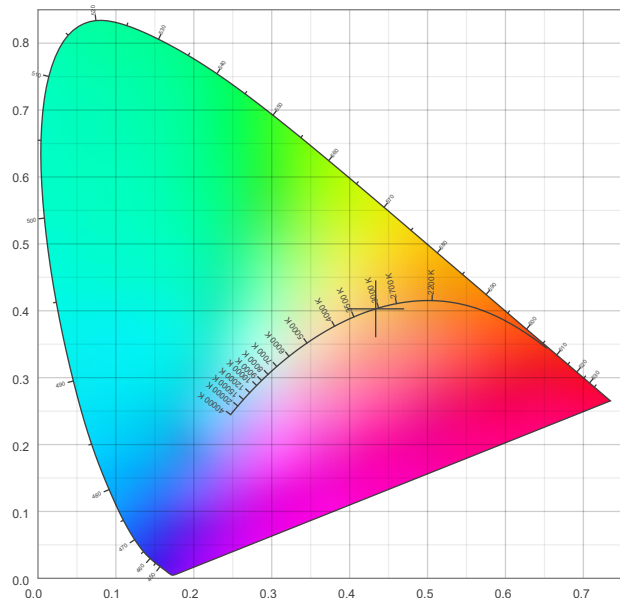


10%	81 cd
20%	163 cd
30%	244 cd
40%	325 cd
50%	407 cd
60%	488 cd
70%	570 cd
80%	651 cd
90%	732 cd

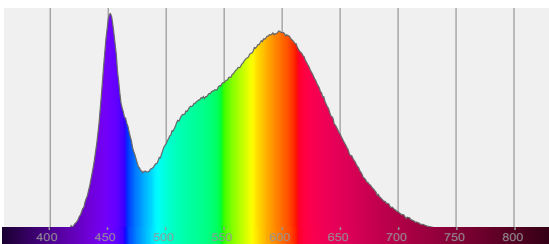
POWER OUTPUT DATA

INPUT POWER:	19.9 W
INPUT VOLTAGE:	380 V DC
INPUT CURRENT:	0.052 A
POWER FACTOR:	1.0
OPTICAL POWER:	3.07 mW
PEAK WAVELENGTH:	452 nm
DOMINANT WAVELENGTH:	583 nm

CIE 1931



SPECTRAL DISTRIBUTION



CIE 1931 ZOOM

x: 0.433
y: 0.403
u: 0.249
v: 0.347
Δuv: -0.0026

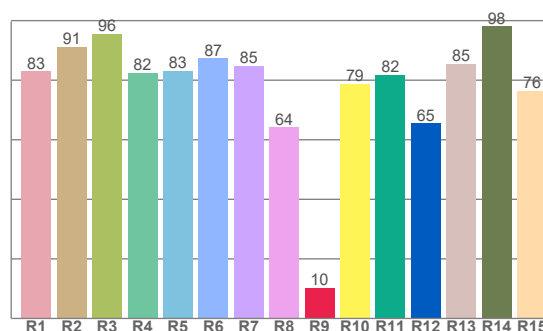
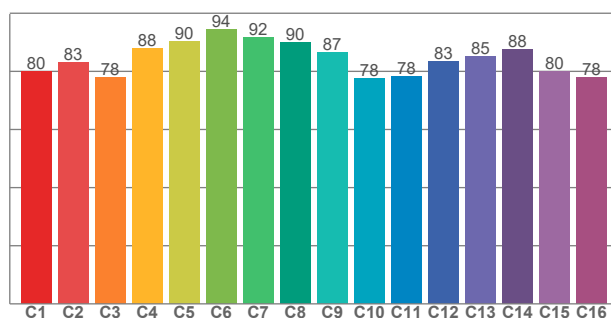
ZONAL LUMEN SUMMARY

0°-10° 76.1 lm	10°-20° 258 lm	20°-30° 275 lm	30°-40° 185 lm	40°-50° 134 lm	50°-60° 61.2 lm	60°-70° 23.4 lm	70°-80° 3.79 lm	80°-90° 0.008 lm
90°-100° 0.001 lm	100°-110° 0.001 lm	110°-120° 0.000 lm	120°-130° 0.000 lm	130°-140° 0.000 lm	140°-150° 0.000 lm	150°-160° 0.000 lm	160°-170° 0.000 lm	170°-180° 0.000 lm

COLOR DETAILS

TM30: 84.2

CRI: 83.9 (R1-R8)



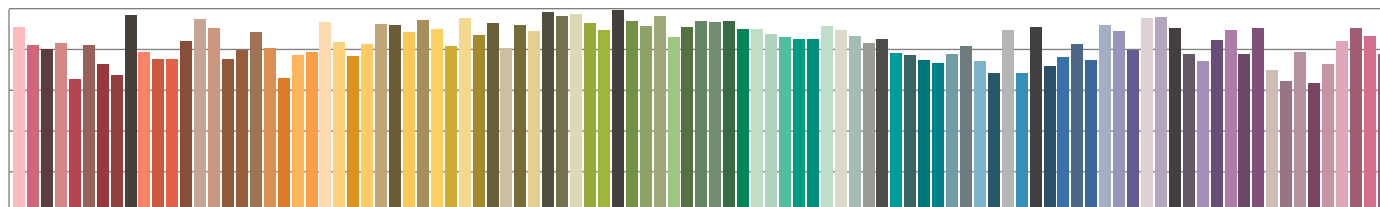
TM30 C values, 16 binned values out of total of 99 C values

CRI R values, only R1-R8 are used to calculate final CRI value

C1	C2	C3	C4	C5	C6	C7	C8	C9	C10	C11	C12	C13	C14	C15	C16
80.1	83.1	78.0	87.9	90.3	94.4	91.6	89.8	86.7	77.7	78.2	83.3	85.2	87.6	80.1	77.9

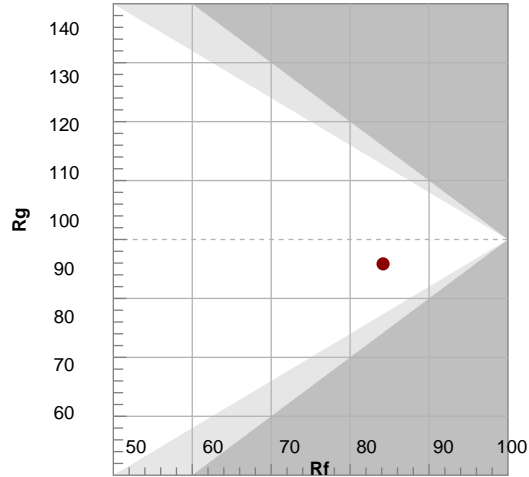
R1	R2	R3	R4	R5	R6	R7	R8	R9	R10	R11	R12	R13	R14	R15
83.0	91.3	95.6	82.5	83.0	87.3	84.8	64.2	10.3	78.7	81.8	65.5	85.4	98.1	76.4

TM30 COLOR EVALUATION SAMPLE



TM30 DETAILS

Bin	Color	Rf	Chroma Shift
R1	Red	83	81
R2	Orange	91	98
R3	Yellow	96	98
R4	Green	82	88
R5	Teal	83	84
R6	Blue	87	85
R7	Purple	85	88
R8	Pink	64	72
R9	Red	10	75
R10	Yellow	79	82
R11	Green	82	82
R12	Blue	65	82
R13	Orange	85	82
R14	Yellow	98	72
R15	Orange	76	75



FIDELITY INDEX

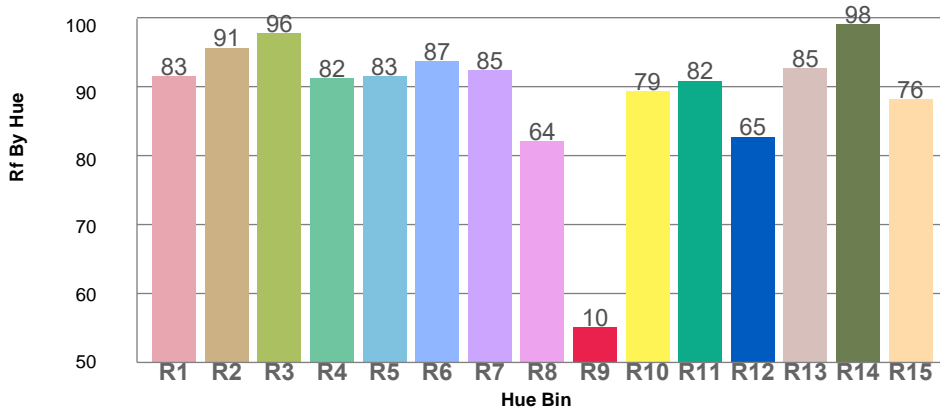
Rf 84.2

GAMUT INDEX

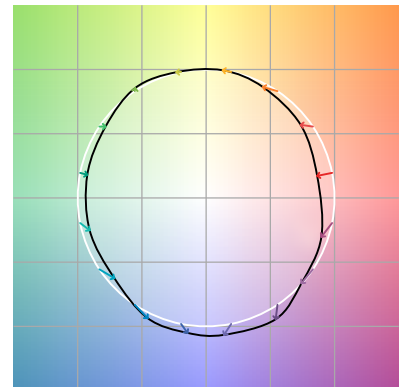
Rg 95.9

Approx. limits for sources on the Planckian locus.
Approx. limits for practical light sources.

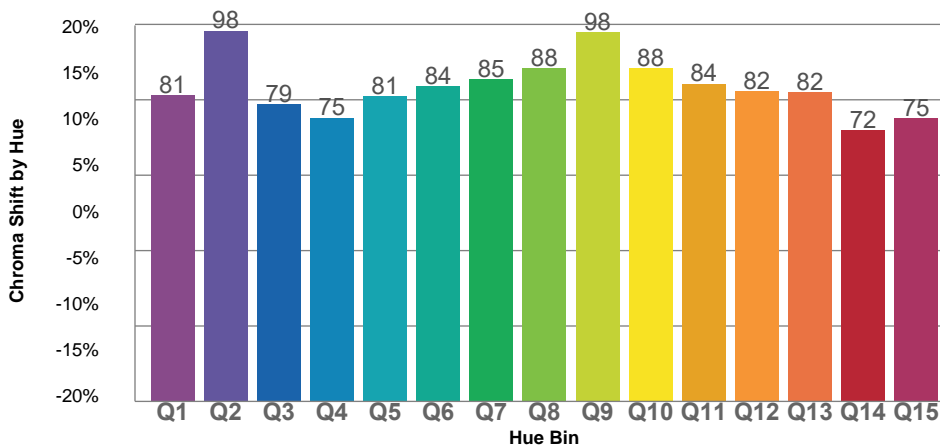
TM30 OVER 50



COLOR VECTOR GRAPHICS



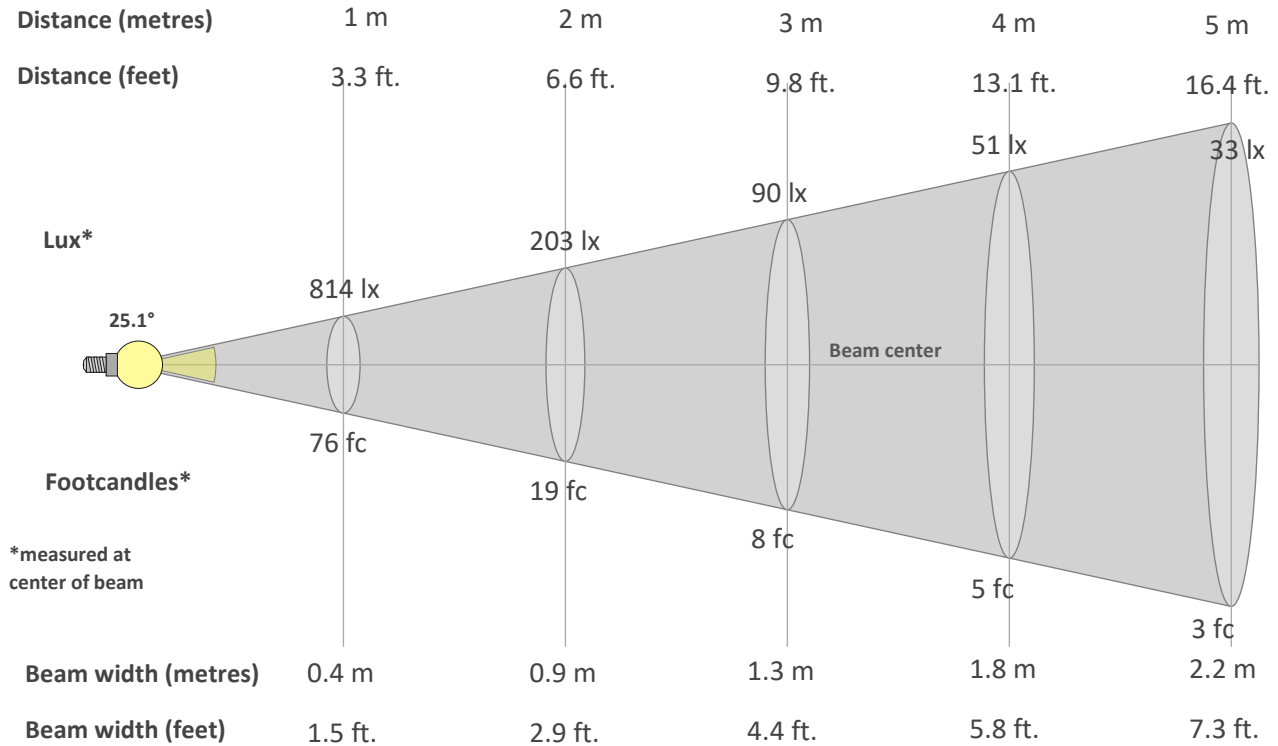
TM30 CHROMA SHIFT



COLOR DISTORTION GRAPHICS



BEAM DETAILS



Beam intensity from 1-20m

1m	2m	3m	4m	5m	6m	7m	8m	9m	10m	11m	12m	13m	14m	15m	16m	17m	18m	19m	20m
3.3ft	6.6ft	9.8ft	13.1ft	16.4ft	19.7ft	23ft	26.2ft	29.5ft	32.8ft	36.1ft	39.4ft	42.7ft	45.9ft	49.2ft	52.5ft	55.8ft	59.1ft	62.3ft	65.6ft
814lx	203lx	90lx	51lx	33lx	23lx	17lx	13lx	10lx	8lx	7lx	6lx	5lx	4lx	4lx	3lx	3lx	3lx	2lx	2lx
75.6fc	18.9fc	8.4fc	4.7fc	3fc	2.1fc	1.5fc	1.2fc	0.9fc	0.8fc	0.6fc	0.5fc	0.4fc	0.4fc	0.3fc	0.3fc	0.3fc	0.2fc	0.2fc	0.2fc

Intensity in 0° c-plane

0°	2°	4°	6°	8°	10°	12°	14°	16°	18°	20°	22°	24°	26°	28°	30°	32°	34°	36°	38°
814	785	730	655	579	516	463	416	373	333	295	260	228	200	174	151	130	111	95	82
100%	97%	90%	80%	71%	63%	57%	51%	46%	41%	36%	32%	28%	25%	21%	19%	16%	14%	12%	10%

Intensity in 90° c-plane

0°	2°	4°	6°	8°	10°	12°	14°	16°	18°	20°	22°	24°	26°	28°	30°	32°	34°	36°	38°
814	921	1066	1332	1769	2377	3112	3891	4484	4745	4648	4221	3552	2768	2073	1504	1069	757	564	431
100%	113%	131%	164%	217%	292%	382%	478%	551%	583%	571%	519%	436%	340%	255%	185%	131%	93%	69%	53%

Intensity in 180° c-plane

0°	2°	4°	6°	8°	10°	12°	14°	16°	18°	20°	22°	24°	26°	28°	30°	32°	34°	36°	38°
814	785	730	655	579	516	463	416	373	333	295	260	228	200	174	151	130	111	95	82
100%	97%	90%	80%	71%	63%	57%	51%	46%	41%	36%	32%	28%	25%	21%	19%	16%	14%	12%	10%

Intensity in 270° c-plane

0°	2°	4°	6°	8°	10°	12°	14°	16°	18°	20°	22°	24°	26°	28°	30°	32°	34°	36°	38°
814	726	646	570	502	443	395	356	325	305	292	286	288	302	336	391	464	544	607	597
100%	89%	79%	70%	62%	54%	48%	44%	40%	37%	36%	35%	35%	37%	41%	48%	57%	67%	75%	73%