

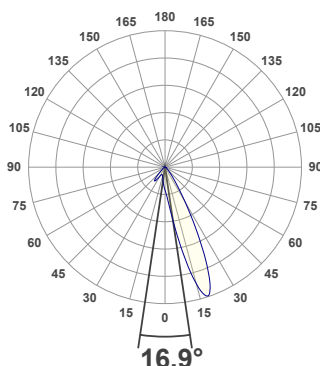
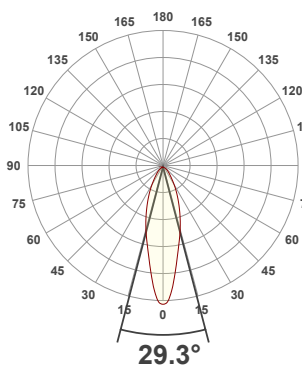


PRODUCT INFORMATION

MEASUREMENT SERIAL NUMBER:	PH-GVA-2024.Feb.26-2697-VO
DATE OF MEASUREMENT:	2/26/2024
MANUFACTURER:	GVA LIGHTING, INC.
PRODUCT NAME:	STR10 ARCHITECTURAL
SIZE (width x length x height):	49 mm x 300 mm x 61 mm
LOT:	sm303D300L2R8000
PROFILE LEGEND:	PIXEL RESOLUTION: R150/200/300 – PIXEL SIZE 150/200/300 mm
INTERNAL ACCESSORIES:	VOLTAGE LEGEND: INF – INFINITY 380 V DC, ELV – 48 V DC
ML – MICRO LOUVER	

ANGULAR DISTRIBUTION AT C0/180

ANGULAR DISTRIBUTION AT C90/270



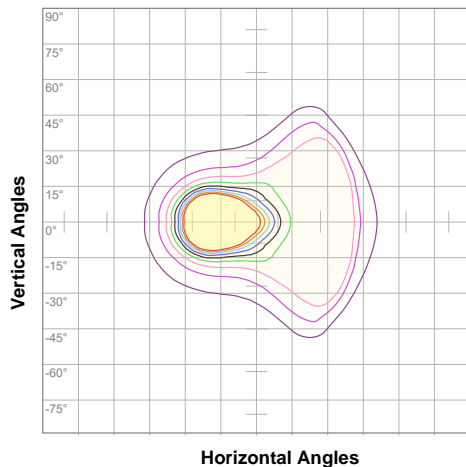
LIGHT OUTPUT DATA

TOTAL LUMEN OUTPUT:	1026 lm
EFFICACY:	52 lm/W
PEAK INTENSITY:	4823 cd
COLOR RENDERING INDEX (CRI):	83.9
COLOR TEMPERATURE (CCT):	3054K
FIDELITY INDEX (TM30Rf):	84.2
GAMUT INDEX (TM30Rg):	95.9

BEAM OUTPUT DATA

BEAM ANGLE (FWHM) C0/180:	29.3°
BEAM ANGLE (FWHM) C90/270:	16.9°
FIELD ANGLE (10%) C0/180:	76.5°
FIELD ANGLE (10%) C90/270:	78.1°
NUMBER OF PLANES MEASURED:	36

ISOCANDELA DIAGRAM

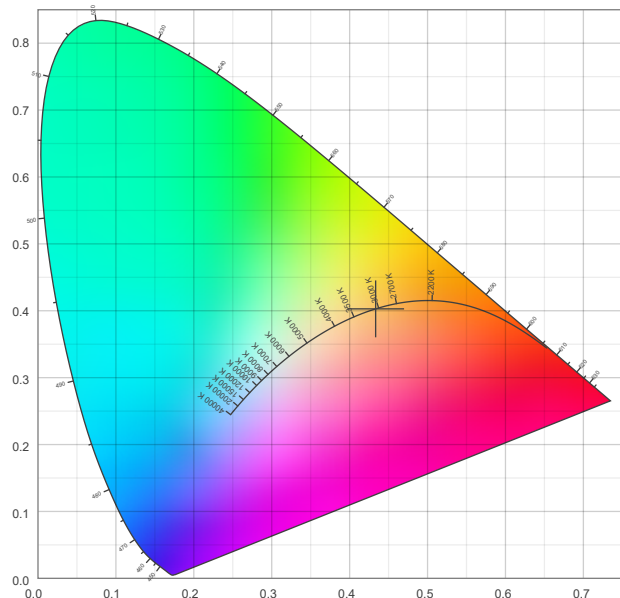


10%	82 cd
20%	164 cd
30%	247 cd
40%	329 cd
50%	411 cd
60%	493 cd
70%	575 cd
80%	657 cd
90%	740 cd

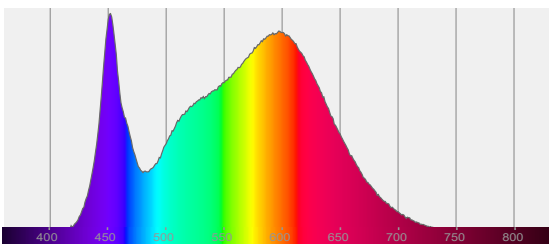
POWER OUTPUT DATA

INPUT POWER:	19.9 W
INPUT VOLTAGE:	380 V DC
INPUT CURRENT:	0.052 A
POWER FACTOR:	1.0
OPTICAL POWER:	3.10 mW
PEAK WAVELENGTH:	452 nm
DOMINANT WAVELENGTH:	583 nm

CIE 1931



SPECTRAL DISTRIBUTION



CIE 1931 ZOOM

x:	0.433
y:	0.403
u:	0.249
v:	0.347
Δuv:	-0.0026

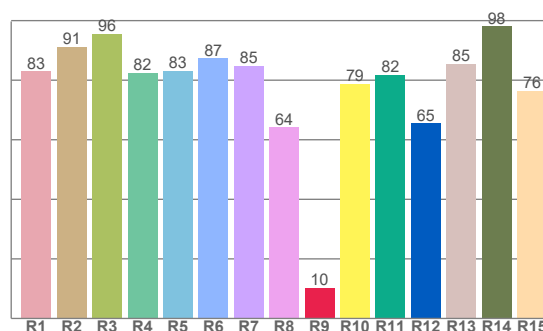
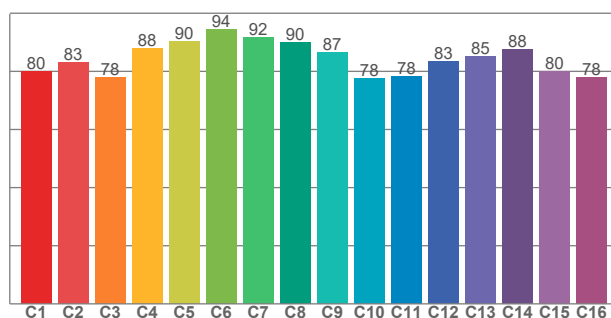
ZONAL LUMEN SUMMARY

0°-10° 76.9 lm	10°-20° 261 lm	20°-30° 277 lm	30°-40° 186 lm	40°-50° 135 lm	50°-60° 61.9 lm	60°-70° 23.7 lm	70°-80° 3.81 lm	80°-90° 0.008 lm
90°-100° 0.001 lm	100°-110° 0.001 lm	110°-120° 0.000 lm	120°-130° 0.000 lm	130°-140° 0.000 lm	140°-150° 0.000 lm	150°-160° 0.000 lm	160°-170° 0.000 lm	170°-180° 0.000 lm

COLOR DETAILS

TM30: 84.2

CRI: 83.9 (R1-R8)



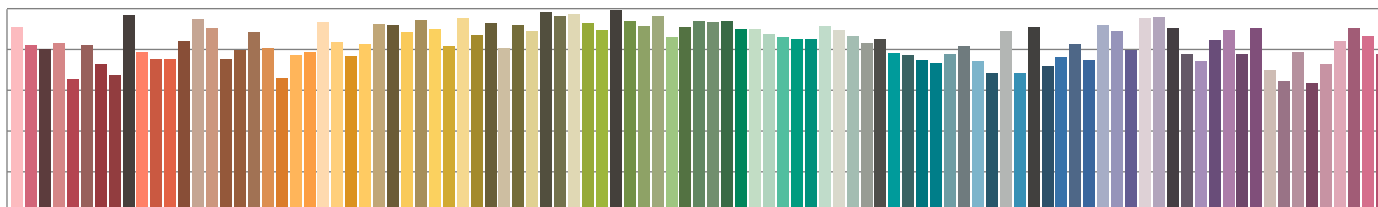
TM30 C values, 16 binned values out of total of 99 C values

CRI R values, only R1-R8 are used to calculate final CRI value

C1	C2	C3	C4	C5	C6	C7	C8	C9	C10	C11	C12	C13	C14	C15	C16
80.1	83.1	78.0	87.9	90.3	94.4	91.6	89.8	86.7	77.7	78.2	83.3	85.2	87.6	80.1	77.9

R1	R2	R3	R4	R5	R6	R7	R8	R9	R10	R11	R12	R13	R14	R15
83.0	91.3	95.6	82.5	83.0	87.3	84.8	64.2	10.3	78.7	81.8	65.5	85.4	98.1	76.4

TM30 COLOR EVALUATION SAMPLE



TM30 DETAILS

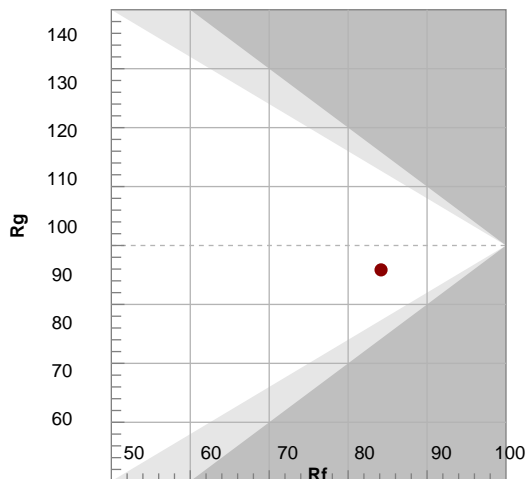
FIDELITY INDEX

Rf 84.2

GAMUT INDEX

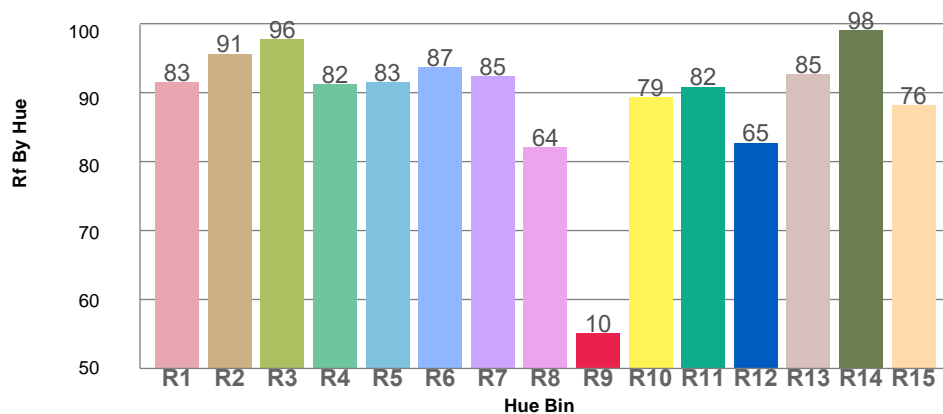
Rg 95.9

Color	R1	R2	R3	R4	R5	R6	R7	R8	R9	R10	R11	R12	R13	R14	R15
Red	83	91	96	82	83	87	85	64	10	79	82	65	85	98	76

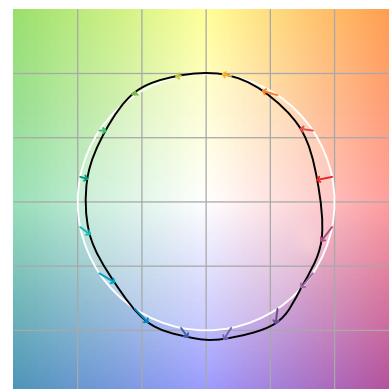


Approx. limits for sources on the Planckian locus.
 Approx. limits for practical light sources.

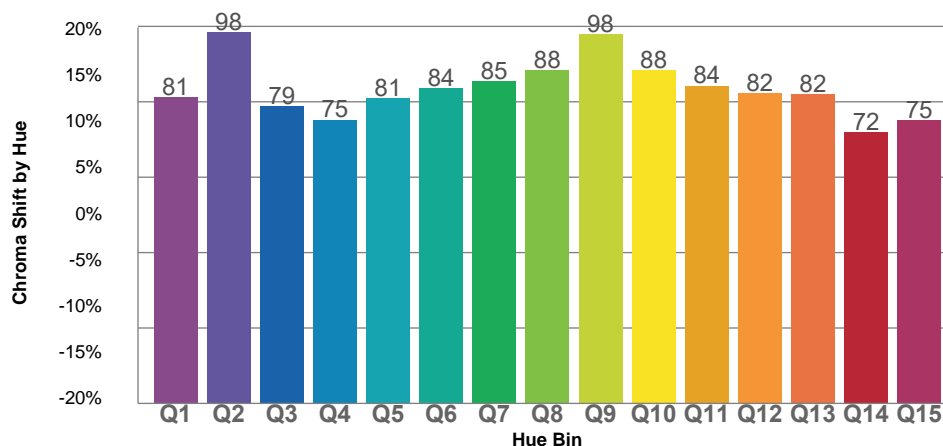
TM30 OVER 50



COLOR VECTOR GRAPHICS



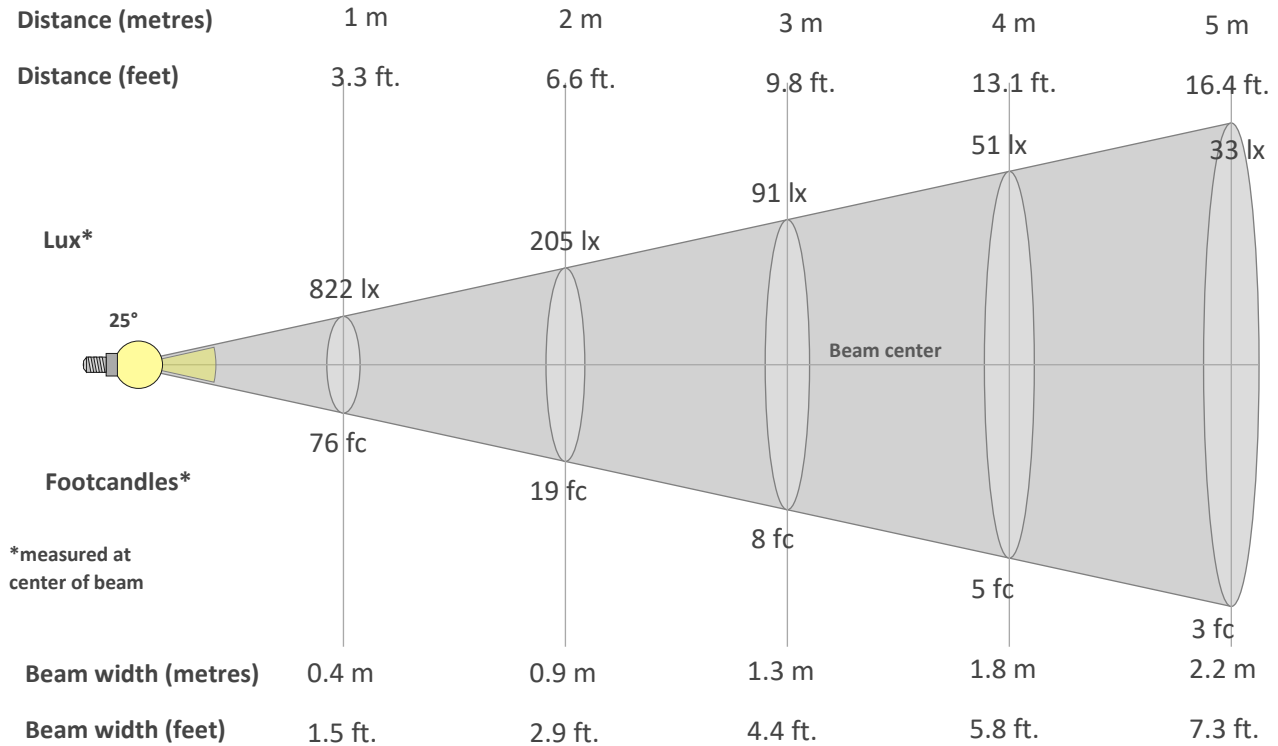
TM30 CHROMA SHIFT



COLOR DISTORTION GRAPHICS



BEAM DETAILS



Beam intensity from 1-20m

1m	2m	3m	4m	5m	6m	7m	8m	9m	10m	11m	12m	13m	14m	15m	16m	17m	18m	19m	20m
3.3ft	6.6ft	9.8ft	13.1ft	16.4ft	19.7ft	23ft	26.2ft	29.5ft	32.8ft	36.1ft	39.4ft	42.7ft	45.9ft	49.2ft	52.5ft	55.8ft	59.1ft	62.3ft	65.6ft
822lx	205lx	91lx	51lx	33lx	23lx	17lx	13lx	10lx	8lx	7lx	6lx	5lx	4lx	4lx	3lx	3lx	3lx	2lx	2lx
76.3fc	19.1fc	8.5fc	4.8fc	3.1fc	2.1fc	1.6fc	1.2fc	0.9fc	0.8fc	0.6fc	0.5fc	0.5fc	0.4fc	0.3fc	0.3fc	0.3fc	0.2fc	0.2fc	0.2fc

Intensity in 0° c-plane

0°	2°	4°	6°	8°	10°	12°	14°	16°	18°	20°	22°	24°	26°	28°	30°	32°	34°	36°	38°
822	801	742	662	586	520	466	420	378	337	299	263	231	202	176	153	131	112	96	83
100%	98%	90%	81%	71%	63%	57%	51%	46%	41%	36%	32%	28%	25%	21%	19%	16%	14%	12%	10%

Intensity in 90° c-plane

0°	2°	4°	6°	8°	10°	12°	14°	16°	18°	20°	22°	24°	26°	28°	30°	32°	34°	36°	38°
822	733	653	578	509	449	398	359	328	307	293	286	287	301	332	384	455	537	600	598
100%	89%	79%	70%	62%	55%	48%	44%	40%	37%	36%	35%	35%	37%	40%	47%	55%	65%	73%	73%

Intensity in 180° c-plane

0°	2°	4°	6°	8°	10°	12°	14°	16°	18°	20°	22°	24°	26°	28°	30°	32°	34°	36°	38°
822	801	742	662	586	520	466	420	378	337	299	263	231	202	176	153	131	112	96	83
100%	98%	90%	81%	71%	63%	57%	51%	46%	41%	36%	32%	28%	25%	21%	19%	16%	14%	12%	10%

Intensity in 270° c-plane

0°	2°	4°	6°	8°	10°	12°	14°	16°	18°	20°	22°	24°	26°	28°	30°	32°	34°	36°	38°
822	935	1093	1358	1816	2447	3190	3949	4542	4761	4611	4150	3468	2686	2002	1452	1035	736	544	418
100%	114%	133%	165%	221%	298%	388%	481%	553%	579%	561%	505%	422%	327%	244%	177%	126%	90%	66%	51%