

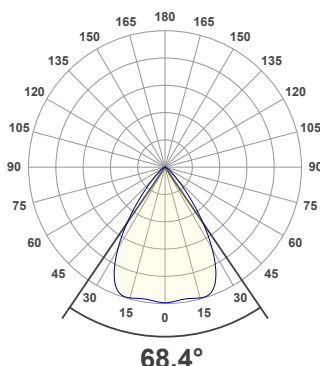
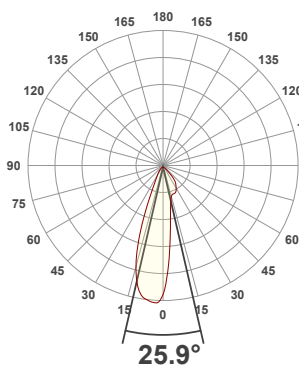


PRODUCT INFORMATION

MEASUREMENT SERIAL NUMBER:	PH-GVA-2024.Mar.04-2735-VO
DATE OF MEASUREMENT:	3/4/2024
MANUFACTURER:	GVA LIGHTING, INC.
PRODUCT NAME:	STR10 ARCHITECTURAL
SIZE (width x length x height):	49 mm x 300 mm x 61 mm
LOT:	sm303D300L2R8000
PROFILE LEGEND:	PIXEL RESOLUTION: R150/200/300 – PIXEL SIZE 150/200/300 mm
INTERNAL ACCESSORIES:	VOLTAGE LEGEND: INF – INFINITY 380 V DC, ELV – 48 V DC

ANGULAR DISTRIBUTION AT C0/180

ANGULAR DISTRIBUTION AT C90/270



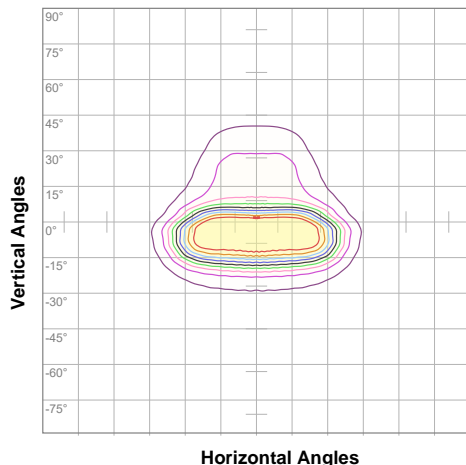
LIGHT OUTPUT DATA

TOTAL LUMEN OUTPUT:	1045 lm
EFFICACY:	53 lm/W
PEAK INTENSITY:	1487 cd
COLOR RENDERING INDEX (CRI):	84.6
COLOR TEMPERATURE (CCT):	3052K
FIDELITY INDEX (TM30Rf):	84.7
GAMUT INDEX (TM30Rg):	95.6

BEAM OUTPUT DATA

BEAM ANGLE (FWHM) C0/180:	25.9°
BEAM ANGLE (FWHM) C90/270:	68.4°
FIELD ANGLE (10%) C0/180:	75.4°
FIELD ANGLE (10%) C90/270:	94.2°
NUMBER OF PLANES MEASURED:	36

ISOCANDELA DIAGRAM

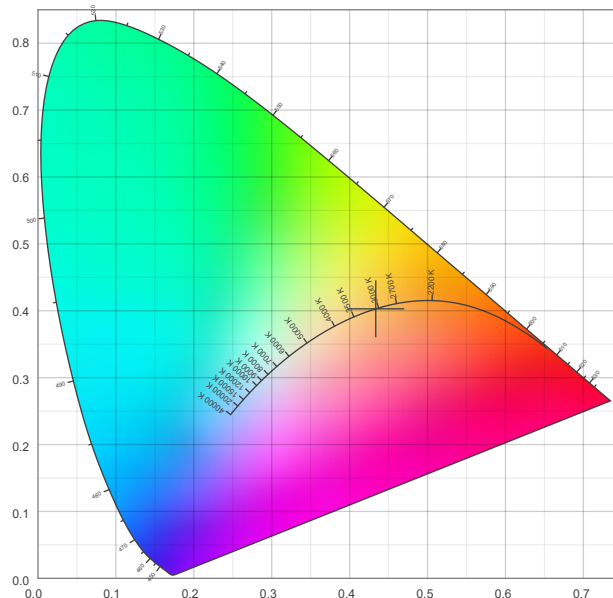


10%	136 cd
20%	272 cd
30%	408 cd
40%	545 cd
50%	681 cd
60%	817 cd
70%	953 cd
80%	1089 cd
90%	1225 cd

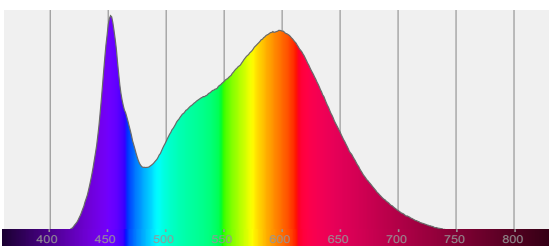
POWER OUTPUT DATA

INPUT POWER:	19.9 W
INPUT VOLTAGE:	380 V DC
INPUT CURRENT:	0.052 A
POWER FACTOR:	1.0
OPTICAL POWER:	3.20 mW
PEAK WAVELENGTH:	452 nm
DOMINANT WAVELENGTH:	583 nm

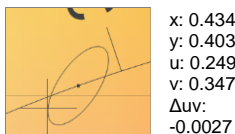
CIE 1931



SPECTRAL DISTRIBUTION



CIE 1931 ZOOM



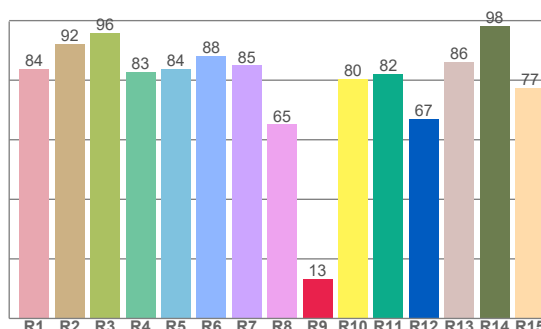
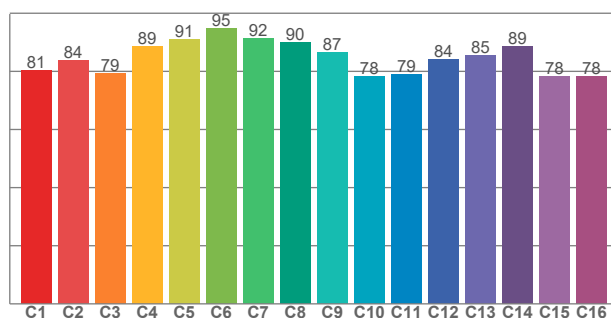
ZONAL LUMEN SUMMARY

0°-10° 114 lm	10°-20° 266 lm	20°-30° 293 lm	30°-40° 208 lm	40°-50° 94.4 lm	50°-60° 41.7 lm	60°-70° 21.3 lm	70°-80° 7.09 lm	80°-90° 0.313 lm
90°-100° 0.000 lm	100°-110° 0.000 lm	110°-120° 0.000 lm	120°-130° 0.000 lm	130°-140° 0.000 lm	140°-150° 0.000 lm	150°-160° 0.000 lm	160°-170° 0.000 lm	170°-180° 0.000 lm

COLOR DETAILS

TM30: 84.7

CRI: 84.6 (R1-R8)



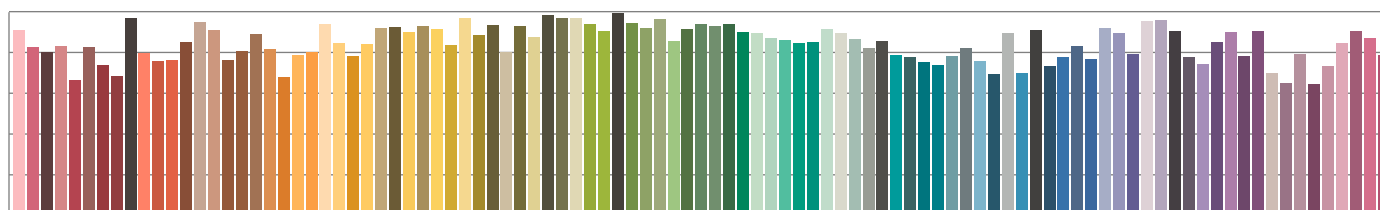
TM30 C values, 16 binned values out of total of 99 C values

CRI R values, only R1-R8 are used to calculate final CRI value

C1	C2	C3	C4	C5	C6	C7	C8	C9	C10	C11	C12	C13	C14	C15	C16
80.5	83.7	79.2	88.6	90.9	94.7	91.5	89.8	86.6	78.3	79.1	84.3	85.4	88.6	78.2	78.3

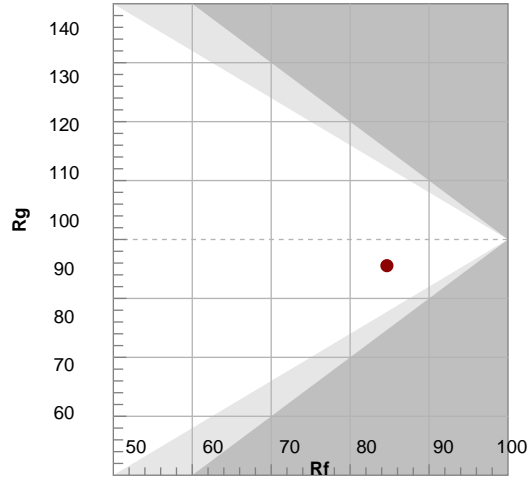
R1	R2	R3	R4	R5	R6	R7	R8	R9	R10	R11	R12	R13	R14	R15
83.7	92.1	95.8	82.9	83.8	88.2	85.0	65.1	13.2	80.5	82.2	66.9	86.2	98.3	77.4

TM30 COLOR EVALUATION SAMPLE



TM30 DETAILS

Bin	Color	Rf	Chroma Shift
R1	Red	84	82
R2	Orange	92	98
R3	Yellow	96	80
R4	Green	83	76
R5	Teal	84	81
R6	Blue	88	84
R7	Purple	85	86
R8	Pink	65	89
R9	Red	13	98
R10	Yellow	80	89
R11	Green	82	85
R12	Blue	67	83
R13	Orange	86	82
R14	Yellow	98	73
R15	Orange	77	76



FIDELITY INDEX

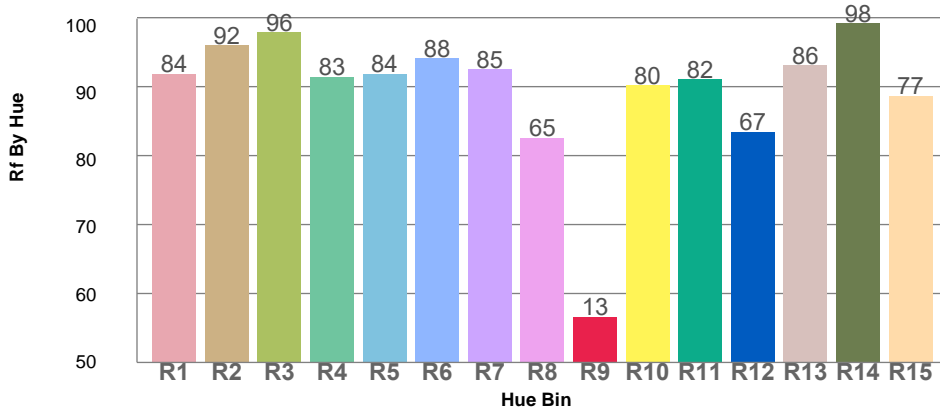
Rf 84.7

GAMUT INDEX

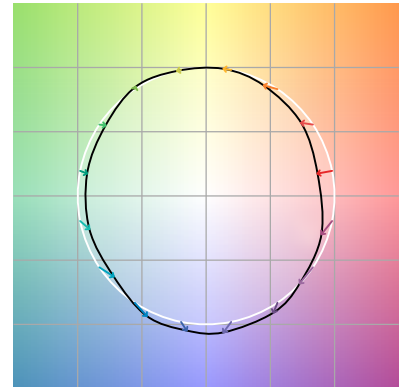
Rg 95.6

Approx. limits for sources on the Planckian locus.
 Approx. limits for practical light sources.

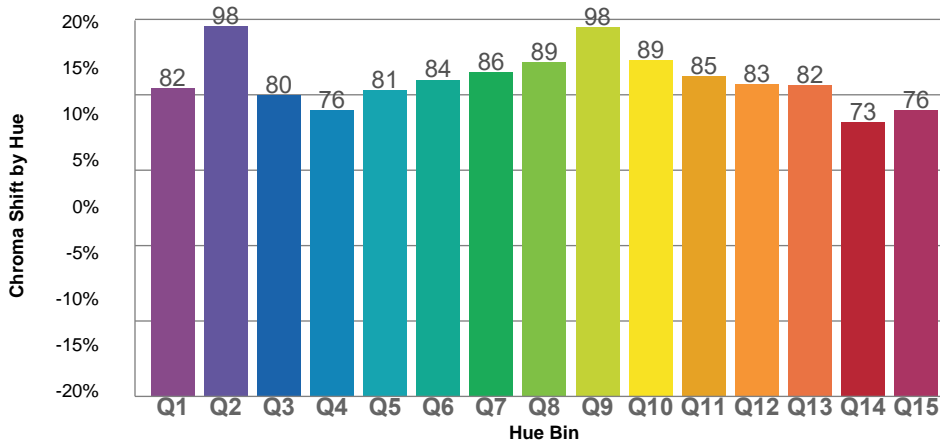
TM30 OVER 50



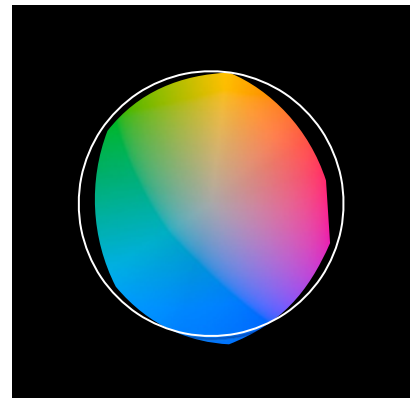
COLOR VECTOR GRAPHICS



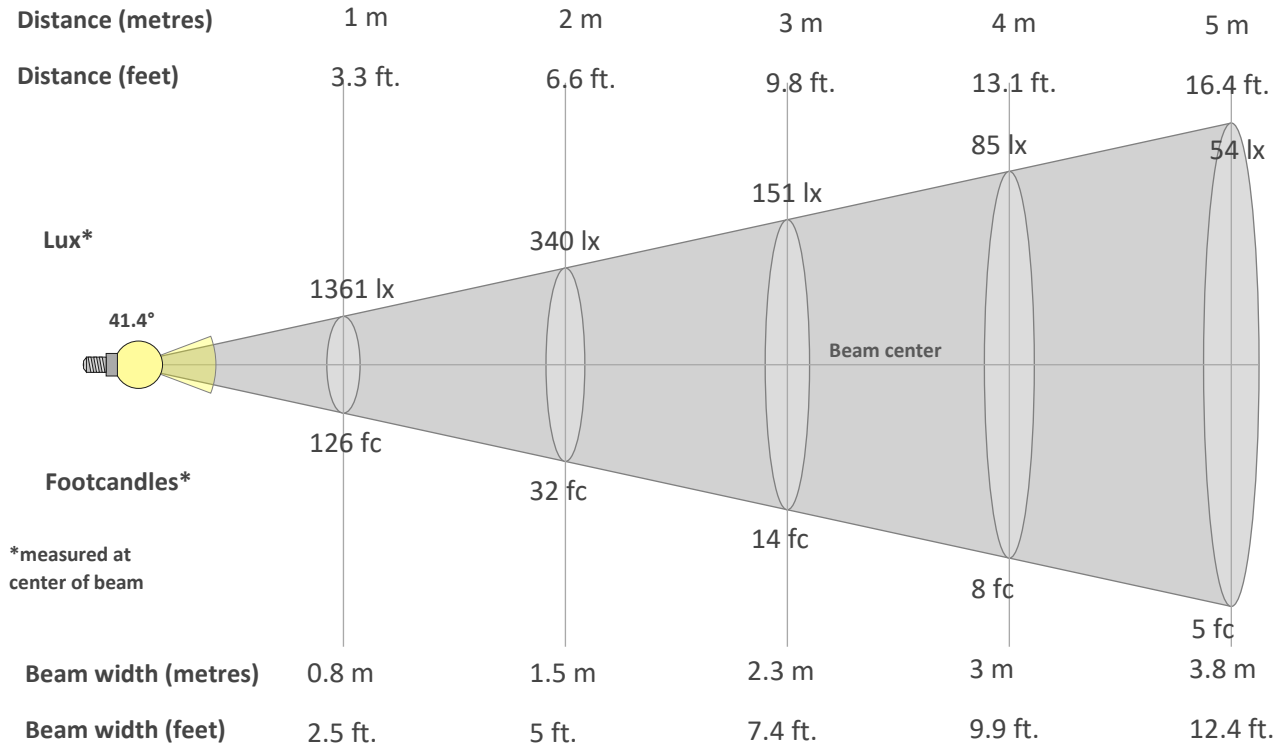
TM30 CHROMA SHIFT



COLOR DISTORTION GRAPHICS



BEAM DETAILS



*measured at center of beam

Beam intensity from 1-20m

1m	2m	3m	4m	5m	6m	7m	8m	9m	10m	11m	12m	13m	14m	15m	16m	17m	18m	19m	20m
3.3ft	6.6ft	9.8ft	13.1ft	16.4ft	19.7ft	23ft	26.2ft	29.5ft	32.8ft	36.1ft	39.4ft	42.7ft	45.9ft	49.2ft	52.5ft	55.8ft	59.1ft	62.3ft	65.6ft
1361lx	340lx	151lx	85lx	54lx	38lx	28lx	21lx	17lx	14lx	11lx	9lx	8lx	7lx	6lx	5lx	5lx	4lx	4lx	3lx
126.5fc	31.6fc	14.1fc	7.9fc	5.1fc	3.5fc	2.6fc	2fc	1.6fc	1.3fc	1fc	0.9fc	0.7fc	0.6fc	0.6fc	0.5fc	0.4fc	0.4fc	0.4fc	0.3fc

Intensity in 0° c-plane

0°	2°	4°	6°	8°	10°	12°	14°	16°	18°	20°	22°	24°	26°	28°	30°	32°	34°	36°	38°
1361	1189	973	756	586	477	405	360	331	317	311	310	309	306	298	286	271	254	238	224
100%	87%	71%	56%	43%	35%	30%	26%	24%	23%	23%	23%	23%	22%	22%	21%	20%	19%	18%	16%

Intensity in 90° c-plane

0°	2°	4°	6°	8°	10°	12°	14°	16°	18°	20°	22°	24°	26°	28°	30°	32°	34°	36°	38°
1361	1359	1353	1346	1342	1343	1349	1356	1363	1361	1342	1304	1245	1165	1062	946	822	695	569	453
100%	100%	99%	99%	99%	99%	99%	100%	100%	100%	99%	96%	91%	86%	78%	69%	60%	51%	42%	33%

Intensity in 180° c-plane

0°	2°	4°	6°	8°	10°	12°	14°	16°	18°	20°	22°	24°	26°	28°	30°	32°	34°	36°	38°
1361	1455	1464	1452	1431	1391	1320	1207	1063	889	698	508	358	262	201	162	136	116	101	88
100%	107%	108%	107%	105%	102%	97%	89%	78%	65%	51%	37%	26%	19%	15%	12%	10%	9%	7%	6%

Intensity in 270° c-plane

0°	2°	4°	6°	8°	10°	12°	14°	16°	18°	20°	22°	24°	26°	28°	30°	32°	34°	36°	38°
1361	1359	1353	1346	1342	1343	1349	1356	1363	1361	1342	1304	1245	1165	1062	946	822	695	569	453
100%	100%	99%	99%	99%	99%	99%	100%	100%	100%	99%	96%	91%	86%	78%	69%	60%	51%	42%	33%