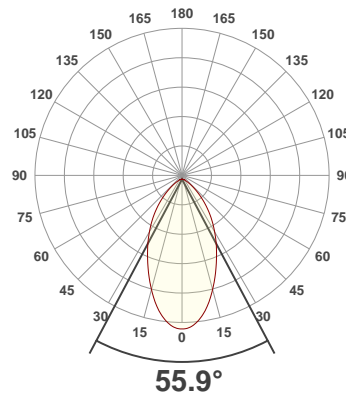
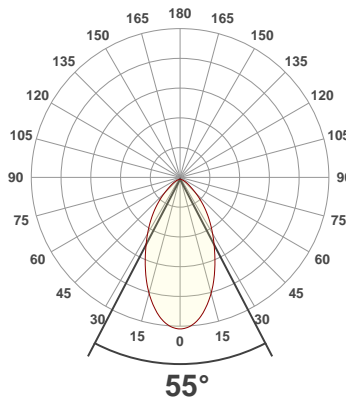




PRODUCT INFORMATION

SERIAL NUMBER:	LL-20190828-569-BMS
DATE OF MEASUREMENT:	2019-08-28
SIZE (l x w. x h):	298 mm x 71 mm x 59.5 mm

ANGULAR DISTRIBUTION AT C0/180 | ANGULAR DISTRIBUTION AT C90/270 | LIGHT OUTPUT DATA

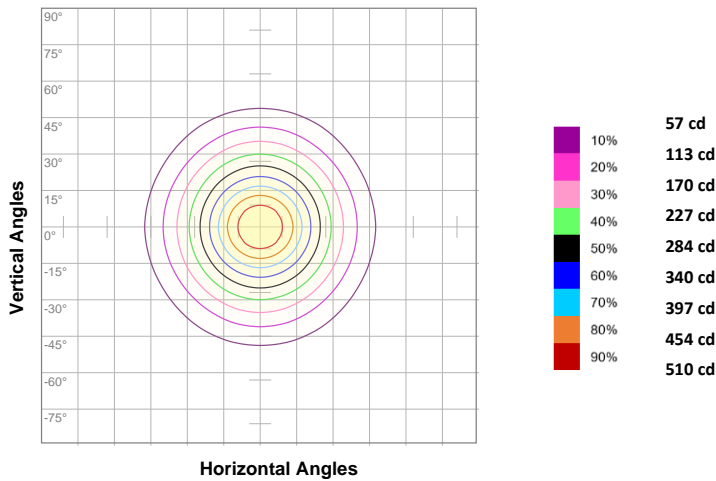


TOTAL LUMEN OUTPUT:	609 lm
EFFICACY:	32 lm/W
PEAK INTENSITY:	567 cd
COLOR RENDERING INDEX (CRI):	26.7
COLOR TEMPERATURE (CCT):	24286K
FIDELITY INDEX (TM30Rf):	0.0
GAMUT INDEX (TM30Rg):	n/a

BEAM OUTPUT DATA

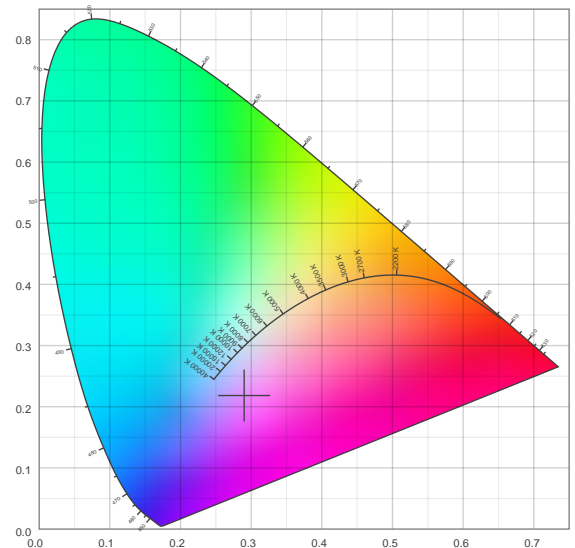
BEAM ANGLE (FWHM) C0/180:	55°
BEAM ANGLE (FWHM) C90/270:	55.9°
FIELD ANGLE (10%) C0/180:	105.7°
FIELD ANGLE (10%) C90/270:	108.5°
NUMBER OF PLANES MEASURED:	12

ISOCANDELA DIAGRAM

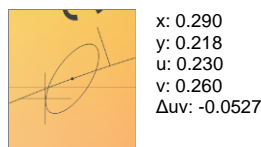
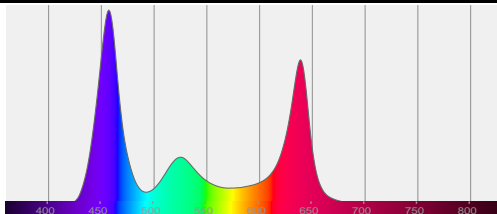


INPUT POWER:	19.2 W
POWER FACTOR:	1.0
OPTICAL POWER:	3.02 mW
PEAK WAVELENGTH:	457 nm
DOMINANT WAVELENGTH:	360 nm

CIE 1931

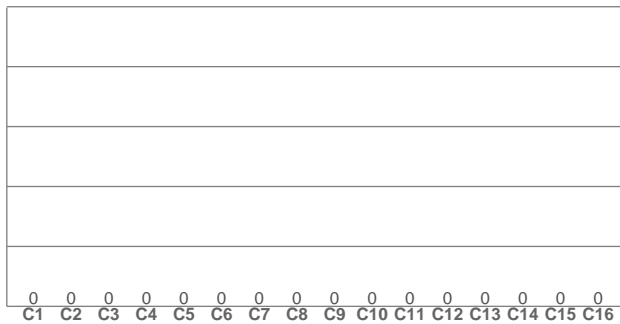
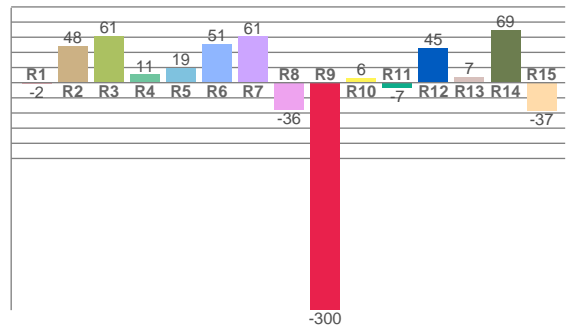


SPECTRAL DISTRIBUTION | CIE 1931 ZOOM



ZONAL LUMEN SUMMARY

0°-10° 51.5 lm	10°-20° 125 lm	20°-30° 145 lm	30°-40° 127 lm	40°-50° 86.3 lm	50°-60° 44.7 lm	60°-70° 21.0 lm	70°-80° 7.83 lm	80°-90° 0.860 lm
90°-100° 0.043 lm	100°-110° 0.039 lm	110°-120° 0.027 lm	120°-130° 0.022 lm	130°-140° 0.015 lm	140°-150° 0.010 lm	150°-160° 0.007 lm	160°-170° 0.004 lm	170°-180° 0.001 lm

COLOR DETAILS
TM30: 0.0

CRI: 26.7 (R1-R8)


TM30 C values, 16 binned values out of total of 99 C values

C1	C2	C3	C4	C5	C6	C7	C8	C9	C10	C11	C12	C13	C14	C15	C16
0.0	0.0	0.0	0.0	0.0	0.0	0.0	0.0	0.0	0.0	0.0	0.0	0.0	0.0	0.0	0.0

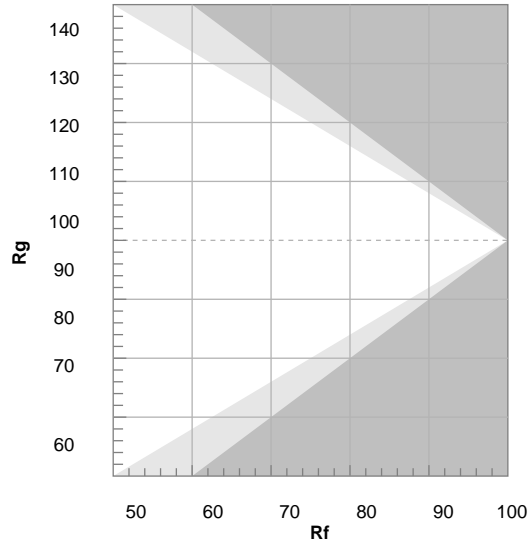
CRI R values, only R1-R8 are used to calculate final CRI value

R1	R2	R3	R4	R5	R6	R7	R8	R9	R10	R11	R12	R13	R14	R15
-1.9	48.0	61.2	10.7	19.0	51.2	61.0	-35.9	-300.2	6.3	-6.8	45.5	7.1	69.2	-36.9

TM30 COLOR EVALUATION SAMPLE

TM30 DETAILS

Hue Bin	R _f	Graphic shifts (%)	
		Chroma	Hue
1	0	0%	0%
2	0	0%	0%
3	0	0%	0%
4	0	0%	0%
5	0	0%	0%
6	0	0%	0%
7	0	0%	0%
8	0	0%	0%
9	0	0%	0%
10	0	0%	0%
11	0	0%	0%
12	0	0%	0%
13	0	0%	0%
14	0	0%	0%
15	0	0%	0%
16	0	0%	0%



FIDELITY INDEX

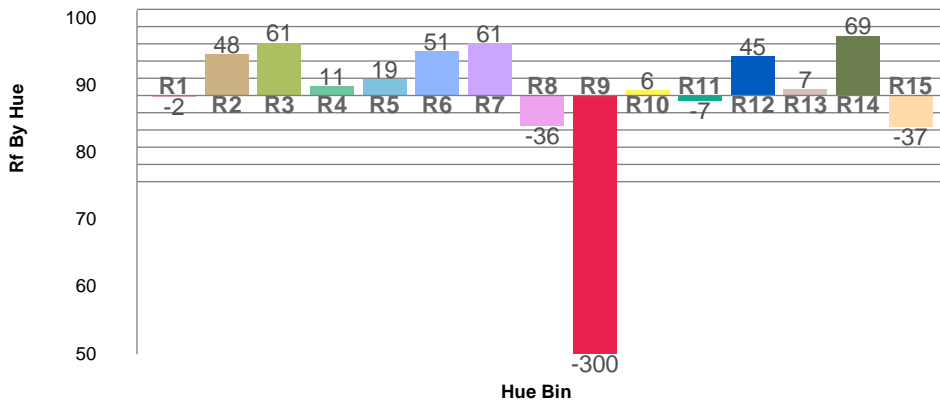
R_f 0.0

GAMUT INDEX

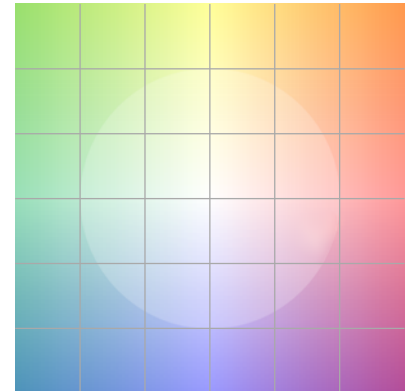
R_g n/a

Approx. limits for sources on the Planckian locus.
 Approx. limits for practical light sources.

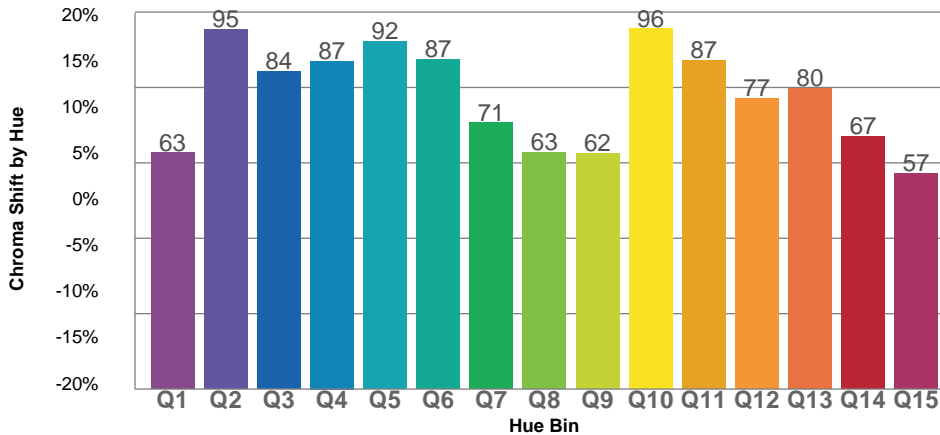
TM30 OVER 50



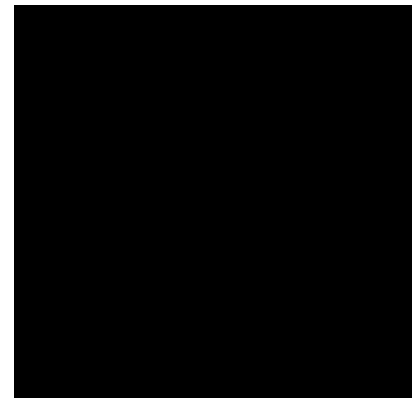
COLOR VECTOR GRAPHICS

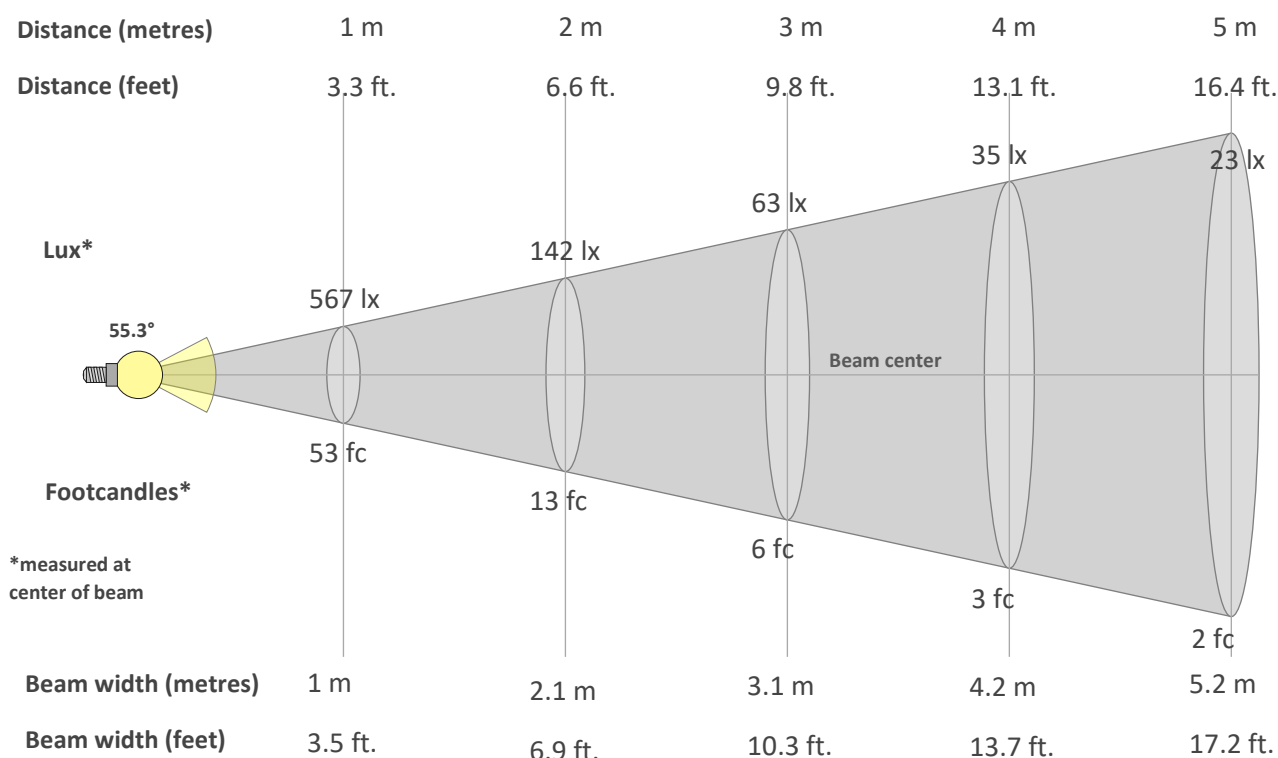


TM30 CHROMA SHIFT



COLOR DISTORTION GRAPHICS



BEAM DETAILS

Beam intensity from 1-20m

1m	2m	3m	4m	5m	6m	7m	8m	9m	10m	11m	12m	13m	14m	15m	16m	17m	18m	19m	20m
3.3ft	6.6ft	9.8ft	13.1ft	16.4ft	19.7ft	23ft	26.2ft	29.5ft	32.8ft	36.1ft	39.4ft	42.7ft	45.9ft	49.2ft	52.5ft	55.8ft	59.1ft	62.3ft	65.6ft
567lx	142lx	63lx	35lx	23lx	16lx	12lx	9lx	7lx	6lx	5lx	4lx	3lx	3lx	3lx	2lx	2lx	2lx	2lx	1lx
52.7fc	13.2fc	5.9fc	3.3fc	2.1fc	1.5fc	1.1fc	0.8fc	0.7fc	0.5fc	0.4fc	0.4fc	0.3fc	0.3fc	0.2fc	0.2fc	0.2fc	0.2fc	0.1fc	0.1fc

Intensity in 0° c-plane

0°	5°	10°	15°	20°	25°	30°	35°	40°	45°	50°	55°	60°	65°	70°	75°	80°	85°	90°	95°
567	553	512	453	385	315	254	200	152	109	72	47	33	21	13	7	3	1	0	0
100%	98%	90%	80%	68%	56%	45%	35%	27%	19%	13%	8%	6%	4%	2%	1%	1%	0%	0%	0%

Intensity in 90° c-plane

0°	5°	10°	15°	20°	25°	30°	35°	40°	45°	50°	55°	60°	65°	70°	75°	80°	85°	90°	95°
567	551	508	446	379	317	261	210	162	119	82	53	34	21	13	7	3	0	0	0
100%	97%	89%	79%	67%	56%	46%	37%	29%	21%	14%	9%	6%	4%	2%	1%	1%	0%	0%	0%

Intensity in 180° c-plane

0°	5°	10°	15°	20°	25°	30°	35°	40°	45°	50°	55°	60°	65°	70°	75°	80°	85°	90°	95°
567	553	512	453	385	315	254	200	152	109	72	47	33	21	13	7	3	1	0	0
100%	98%	90%	80%	68%	56%	45%	35%	27%	19%	13%	8%	6%	4%	2%	1%	1%	0%	0%	0%

Intensity in 270° c-plane

0°	5°	10°	15°	20°	25°	30°	35°	40°	45°	50°	55°	60°	65°	70°	75°	80°	85°	90°	95°
567	551	508	446	379	317	261	210	162	119	82	53	34	21	13	7	3	0	0	0
100%	97%	89%	79%	67%	56%	46%	37%	29%	21%	14%	9%	6%	4%	2%	1%	1%	0%	0%	0%