

Light efficiency:



Light quality:



Color temperature:

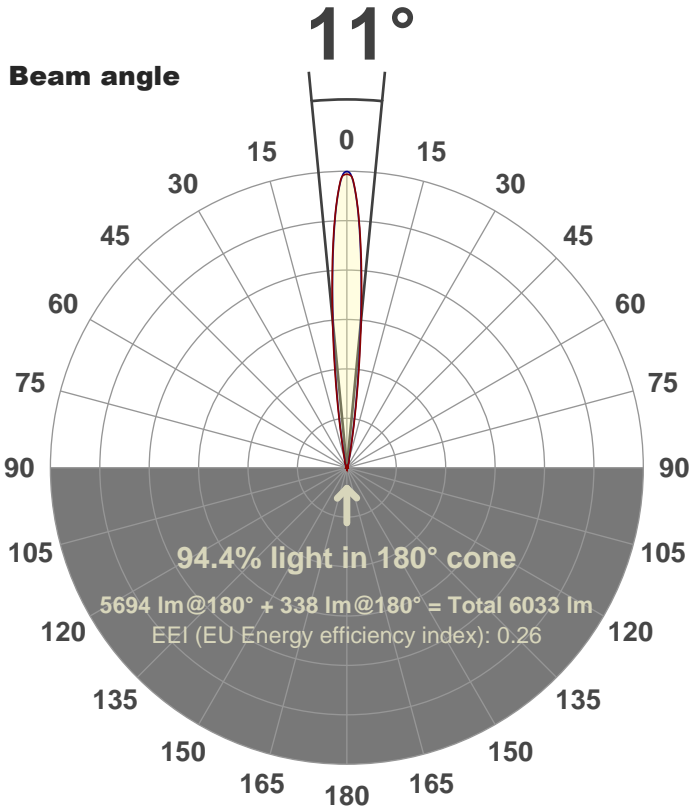


Output: 5694 lm

Peak: 94742 cd

Power: 99.2 W

PF: 1.0



Product name:

FL100-CM-RGBW65K-IM-10-ELV-SM-WHITE

Date and time:

15-May-18 4:42:00 PM

Additional Information:

LED: RGBW

FIXTURE: FL100

COLOR-AMP: ON

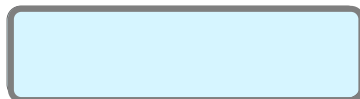
FILM: 250219 (10°)

STABILIZED: YES

COLOR (RGBW): WHITE

PERFORMED BY: ABDULLAH QURESHI

Color

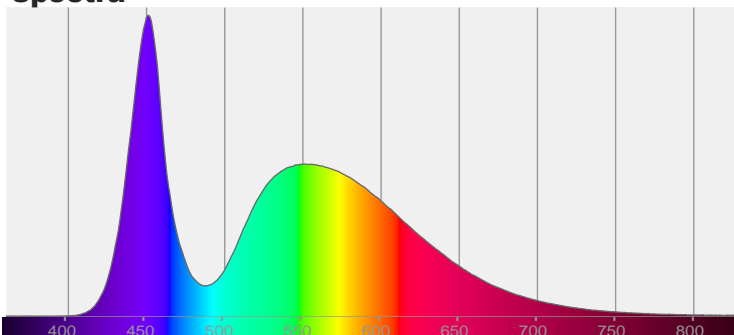


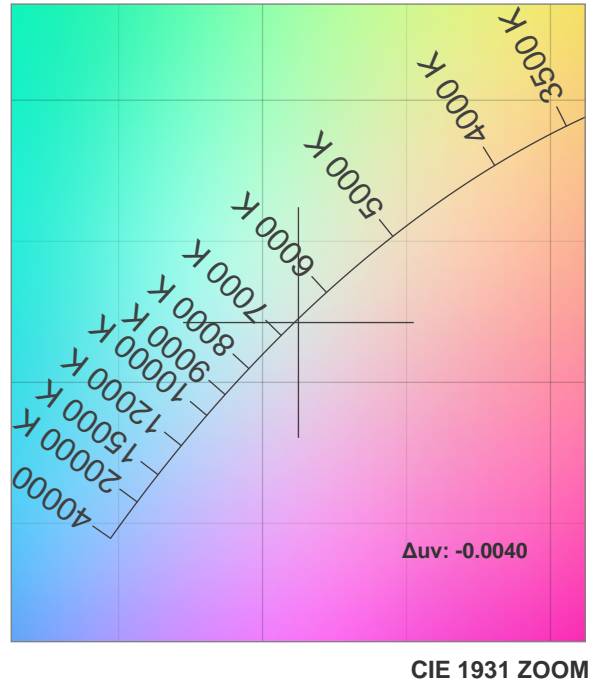
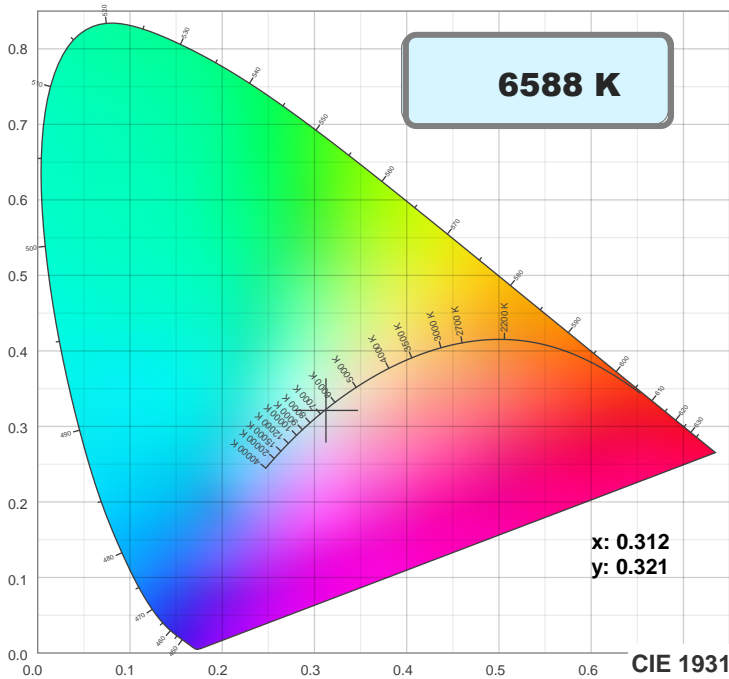
CIE 1931

x: 0.312

y: 0.321

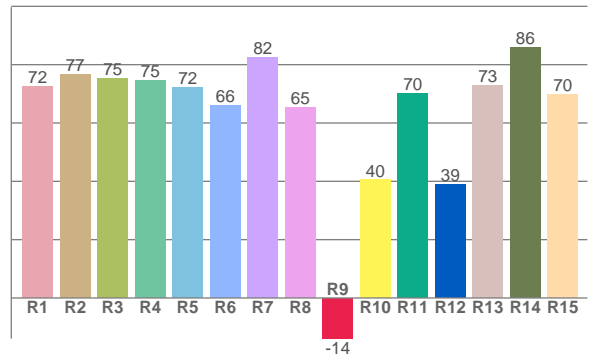
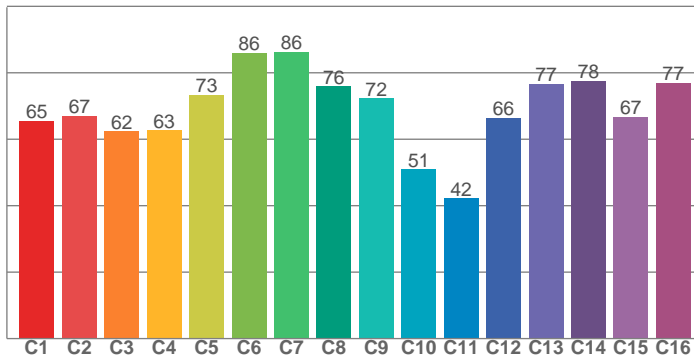
Spectra



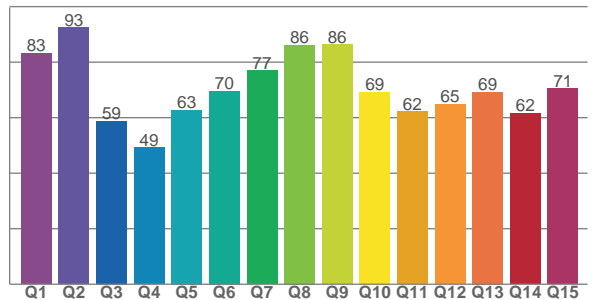


TM30: 68.7

CRI: 73.1 (R1-R8)



CQS: 68.7



CRI R values, only R1-R8 are used to calculate final CRI value

R1	R2	R3	R4	R5	R6	R7	R8	R9	R10	R11	R12	R13	R14	R15
72.4	76.6	75.4	74.6	72.2	66.0	82.3	65.4	-13.9	40.5	70.3	39.0	72.8	85.8	69.7

TM30 C values, 16 binned values out of total of 99 C values

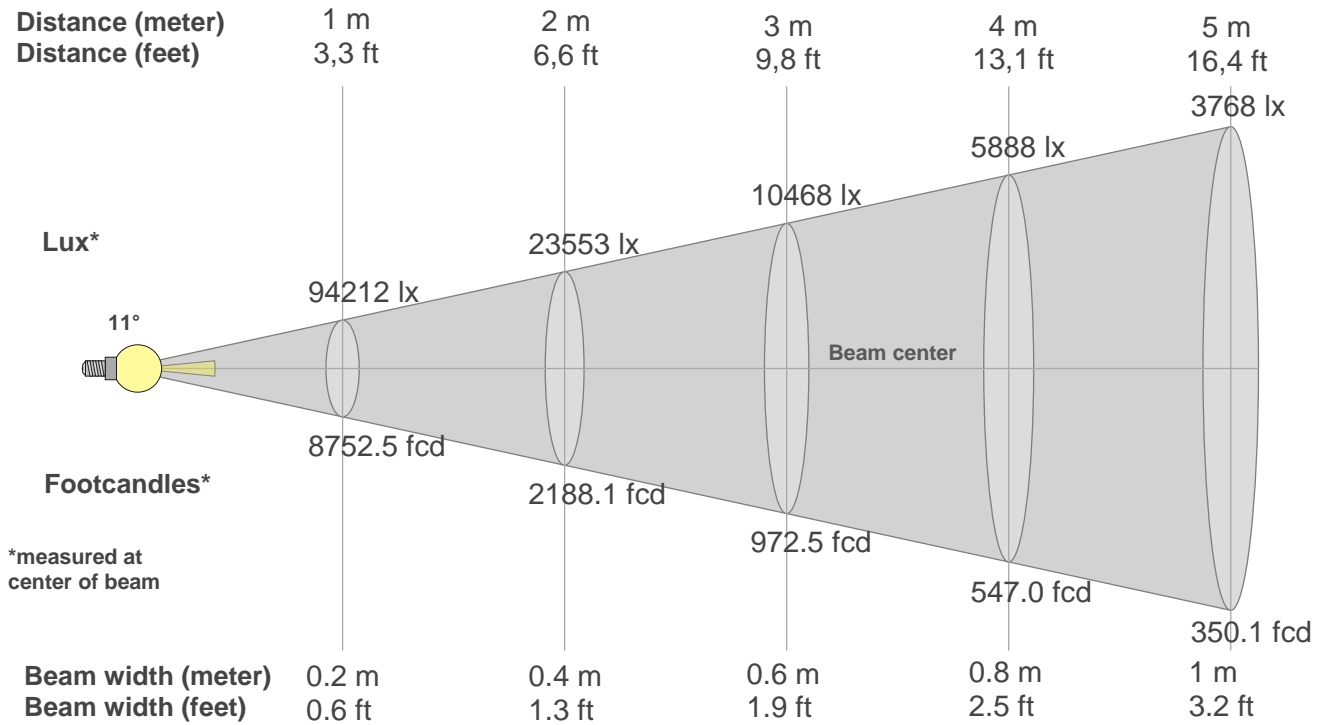
C1	C2	C3	C4	C5	C6	C7	C8	C9	C10	C11	C12	C13	C14	C15	C16
65.4	67.1	62.4	62.7	73.3	85.9	86.2	75.9	72.4	51.0	42.1	66.4	76.7	77.5	66.8	77.0

CQS Q values

Q1	Q2	Q3	Q4	Q5	Q6	Q7	Q8	Q9	Q10	Q11	Q12	Q13	Q14	Q15
83.2	92.5	58.8	49.3	62.8	69.6	76.9	86.2	86.4	69.3	62.2	64.8	69.3	61.6	70.5

Color parameters

Color temperature	Color rendering index	Red component	Color fidelity	Color gamut	Color quality scale	Color coordinate cie 1931	Color coordinate cie 1931	Color coordinate	Color coordinate	Color deviation from black body
CCT	CRI	CRI R9	TM30 Rf	TM30 Rg	CQS	x	y	u	v	Δuv
6588 K	73.1	-13.9	68.7	93.4	68.7	0.312	0.321	0.201	0.309	-0.0040



Beam intensities from 1-20m

1m	2m	3m	4m	5m	6m	7m	8m	9m	10m	11m	12m	13m	14m	15m	16m	17m	18m	19m	20m
3.3ft	6.6ft	9.8ft	13.1ft	16.4ft	19.7ft	23ft	26.2ft	29.5ft	32.8ft	36.1ft	39.4ft	42.7ft	45.9ft	49.2ft	52.5ft	55.8ft	59.1ft	62.3ft	65.6ft
94212lx	23553lx	10468lx	5888lx	3768lx	2617lx	1923lx	1472lx	1163lx	942lx	779lx	654lx	557lx	481lx	419lx	368lx	326lx	291lx	261lx	236lx
8752.5fcd	2188.1fcd	972.5fcd	547fcd	350.1fcd	243.1fcd	178.6fcd	136.8fcd	108.1fcd	87.5fcd	72.3fcd	60.8fcd	51.8fcd	44.7fcd	38.9fcd	34.2fcd	30.3fcd	27fcd	24.2fcd	21.9fcd

Intensities in 0° c-plane

0°	1°	2°	3°	4°	5°	6°	7°	8°	9°	10°	11°	12°	13°	14°	15°	16°	17°	18°	19°
94.2K	92.5K	86.3K	77.1K	65.9K	53.9K	42.0K	31.3K	22.6K	15.9K	11.0K	7.6K	5.5K	4.2K	3.4K	2.9K	2.6K	2.4K	2.2K	2.0K
100%	98%	92%	82%	70%	57%	45%	33%	24%	17%	12%	8%	6%	4%	4%	3%	3%	3%	2%	2%

Intensities in 90° c-plane

0°	1°	2°	3°	4°	5°	6°	7°	8°	9°	10°	11°	12°	13°	14°	15°	16°	17°	18°	19°
94.2K	92.3K	85.9K	76.3K	64.5K	51.9K	39.8K	29.3K	20.6K	14.1K	9.5K	6.4K	4.6K	3.5K	2.9K	2.5K	2.3K	2.2K	2.0K	1.8K
100%	98%	91%	81%	68%	55%	42%	31%	22%	15%	10%	7%	5%	4%	3%	3%	2%	2%	2%	2%

Intensities in 180° c-plane

0°	1°	2°	3°	4°	5°	6°	7°	8°	9°	10°	11°	12°	13°	14°	15°	16°	17°	18°	19°
94.2K	92.5K	86.3K	77.1K	65.9K	53.9K	42.0K	31.3K	22.6K	15.9K	11.0K	7.6K	5.5K	4.2K	3.4K	2.9K	2.6K	2.4K	2.2K	2.0K
100%	98%	92%	82%	70%	57%	45%	33%	24%	17%	12%	8%	6%	4%	4%	3%	3%	3%	2%	2%

Intensities in 270° c-plane

0°	1°	2°	3°	4°	5°	6°	7°	8°	9°	10°	11°	12°	13°	14°	15°	16°	17°	18°	19°
94.2K	92.3K	85.9K	76.3K	64.5K	51.9K	39.8K	29.3K	20.6K	14.1K	9.5K	6.4K	4.6K	3.5K	2.9K	2.5K	2.3K	2.2K	2.0K	1.8K
100%	98%	91%	81%	68%	55%	42%	31%	22%	15%	10%	7%	5%	4%	3%	3%	2%	2%	2%	2%

Beam angle 50%	Field angle 10%	Cutoff angle 2,5%	Intensity ratio in 120° cone	Intensity ratio in 90° cone
11°	20.5°	33.8°	88.8%	85.7%