

Light efficiency:

16 Lumen/Watt

Light quality:

CRI: 0.0

Color temperature:

0 K

Output: 1591 lm

Peak: 2732 cd

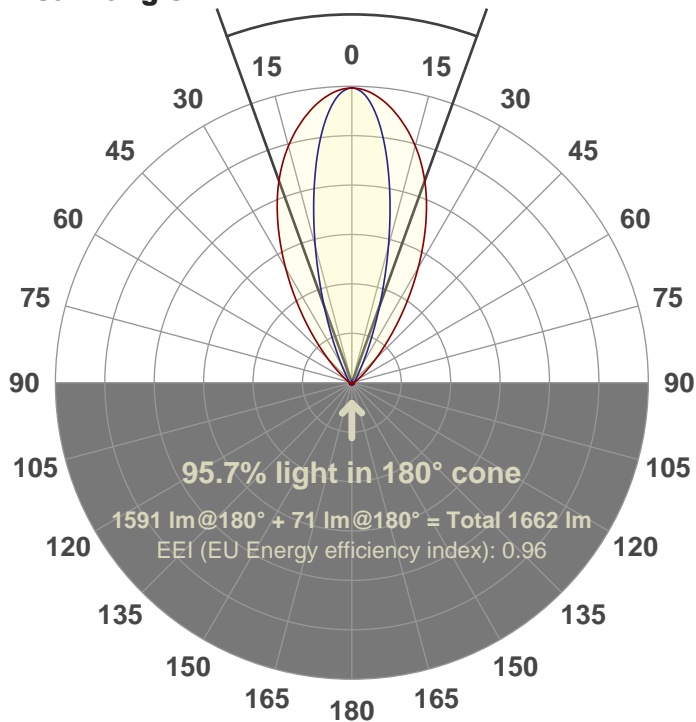
Power: 99.4 W

PF: 1.0



39.7°

Beam angle



Product name:

FL100-CM-RGBW65K-IM-30X60-ELV-SM-RED

Date and time:

07-Jun-18 9:33:18 AM

Additional Information:

LED: RGBW

FIXTURE: FL100

FILM: 250230 (30°X60°)

COLOR-AMP: ON

STABILIZED: YES

COLOR (RGBW): RED

FWHM: 29.1°X56.5°

PERFORMED BY: ABDULLAH QURESHI

Color

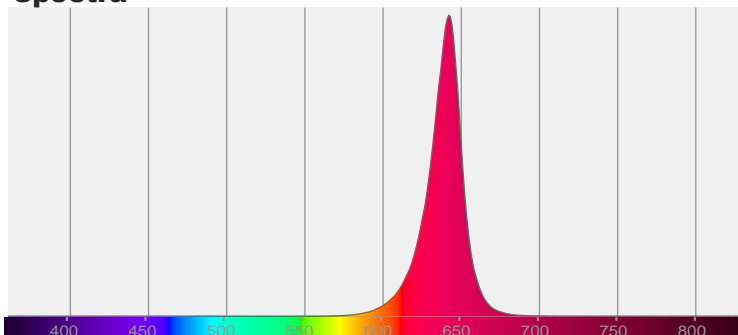


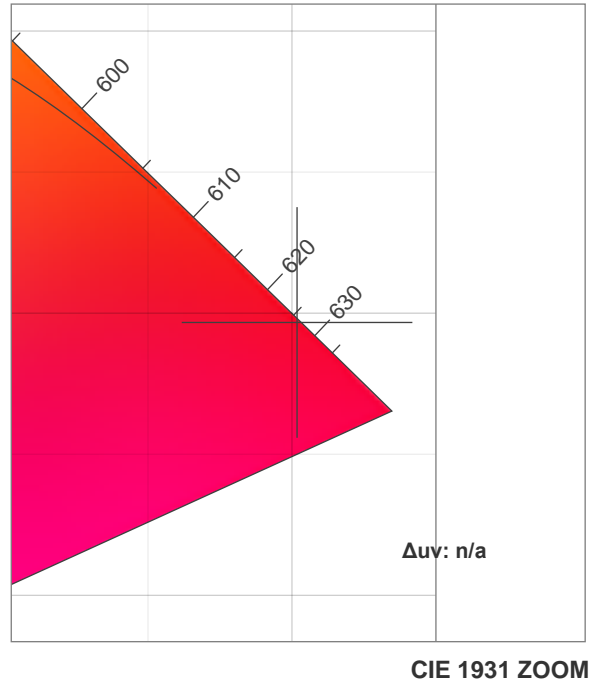
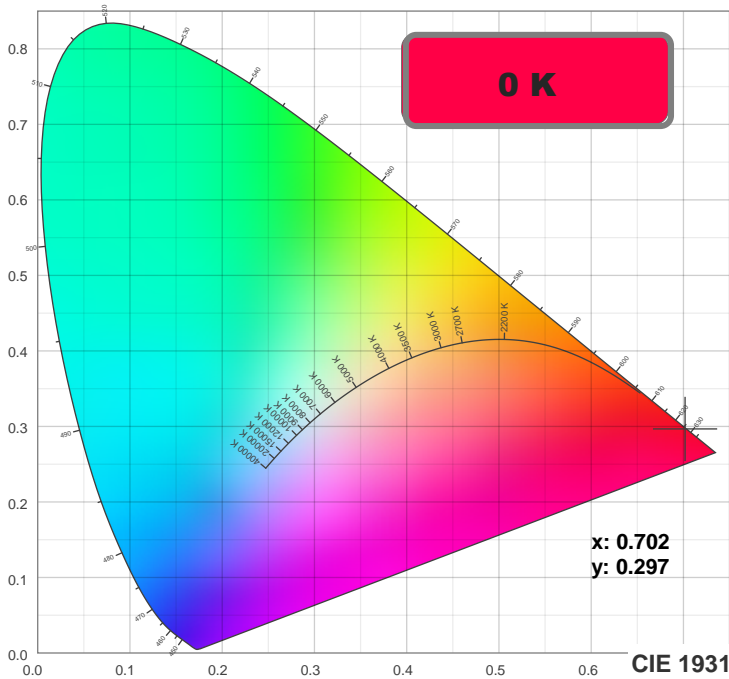
CIE 1931

x: 0.702

y: 0.297

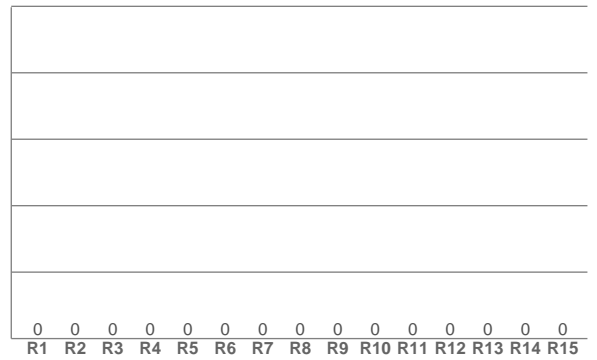
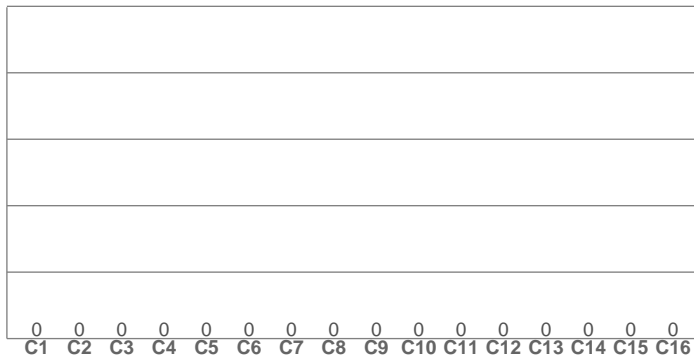
Spectra





TM30: 0.0

CRI: 0.0 (R1-R8)



CRI R values, only R1-R8 are used to calculate final CRI value

R1	R2	R3	R4	R5	R6	R7	R8	R9	R10	R11	R12	R13	R14	R15
0.0	0.0	0.0	0.0	0.0	0.0	0.0	0.0	0.0	0.0	0.0	0.0	0.0	0.0	0.0

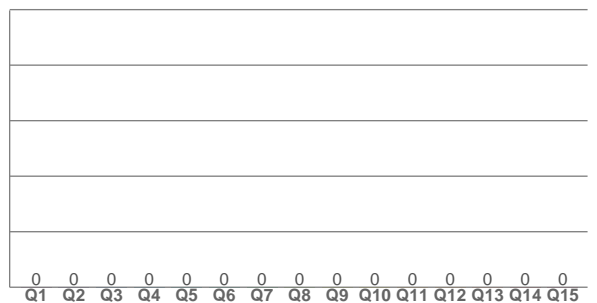
TM30 C values, 16 binned values out of total of 99 C values

C1	C2	C3	C4	C5	C6	C7	C8	C9	C10	C11	C12	C13	C14	C15	C16
0.0	0.0	0.0	0.0	0.0	0.0	0.0	0.0	0.0	0.0	0.0	0.0	0.0	0.0	0.0	0.0

CQS Q values

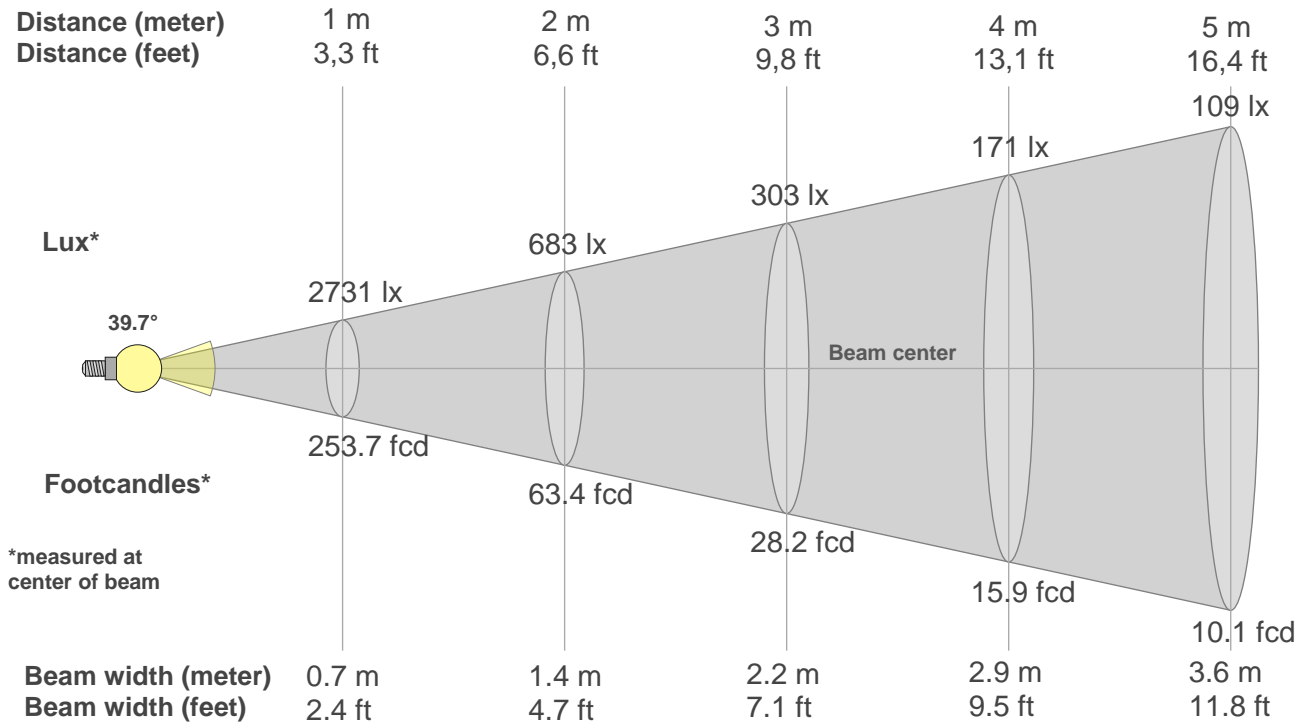
Q1	Q2	Q3	Q4	Q5	Q6	Q7	Q8	Q9	Q10	Q11	Q12	Q13	Q14	Q15
0.0	0.0	0.0	0.0	0.0	0.0	0.0	0.0	0.0	0.0	0.0	0.0	0.0	0.0	0.0

CQS: 0.0



Color parameters

Color temperature	Color rendering index	Red component	Color fidelity	Color gamut	Color quality scale	Color coordinate cie 1931	Color coordinate cie 1931	Color coordinate	Color coordinate	Color deviation from black body
CCT	CRI	CRI R9	TM30 Rf	TM30 Rg	CQS	x	y	u	v	Δuv
0 K	0.0	0.0	0.0	0.0	0.0	0.702	0.297	0.544	0.345	n/a



Beam intensities from 1-20m

1m	2m	3m	4m	5m	6m	7m	8m	9m	10m	11m	12m	13m	14m	15m	16m	17m	18m	19m	20m
3.3ft	6.6ft	9.8ft	13.1ft	16.4ft	19.7ft	23ft	26.2ft	29.5ft	32.8ft	36.1ft	39.4ft	42.7ft	45.9ft	49.2ft	52.5ft	55.8ft	59.1ft	62.3ft	65.6ft
2731lx	683lx	303lx	171lx	109lx	76lx	56lx	43lx	34lx	27lx	23lx	19lx	16lx	14lx	12lx	11lx	9lx	8lx	8lx	7lx
253.7fcd	63.4fcd	28.2fcd	15.9fcd	10.1fcd	7fcd	5.2fcd	4fcd	3.1fcd	2.5fcd	2.1fcd	1.8fcd	1.5fcd	1.3fcd	1.1fcd	1fcd	0.9fcd	0.8fcd	0.7fcd	0.6fcd

Intensities in 0° c-plane

0°	2°	4°	6°	8°	10°	12°	14°	16°	18°	20°	22°	24°	26°	28°	30°	32°	34°	36°	38°
2731	2722	2689	2640	2577	2502	2417	2322	2219	2105	1980	1843	1696	1543	1385	1228	1074	926	787	657
100%	100%	98%	97%	94%	92%	89%	85%	81%	77%	73%	68%	62%	57%	51%	45%	39%	34%	29%	24%

Intensities in 90° c-plane

0°	2°	4°	6°	8°	10°	12°	14°	16°	18°	20°	22°	24°	26°	28°	30°	32°	34°	36°	38°
2731	2694	2587	2420	2206	1961	1702	1439	1185	950	744	570	430	324	245	190	151	124	104	89
100%	99%	95%	89%	81%	72%	62%	53%	43%	35%	27%	21%	16%	12%	9%	7%	6%	5%	4%	3%

Intensities in 180° c-plane

0°	2°	4°	6°	8°	10°	12°	14°	16°	18°	20°	22°	24°	26°	28°	30°	32°	34°	36°	38°
2731	2722	2689	2640	2577	2502	2417	2322	2219	2105	1980	1843	1696	1543	1385	1228	1074	926	787	657
100%	100%	98%	97%	94%	92%	89%	85%	81%	77%	73%	68%	62%	57%	51%	45%	39%	34%	29%	24%

Intensities in 270° c-plane

0°	2°	4°	6°	8°	10°	12°	14°	16°	18°	20°	22°	24°	26°	28°	30°	32°	34°	36°	38°
2731	2694	2587	2420	2206	1961	1702	1439	1185	950	744	570	430	324	245	190	151	124	104	89
100%	99%	95%	89%	81%	72%	62%	53%	43%	35%	27%	21%	16%	12%	9%	7%	6%	5%	4%	3%

Beam angle 50%	Field angle 10%	Cutoff angle 2,5%	Intensity ratio in 120° cone	Intensity ratio in 90° cone
39.7°	70.5°	100.8°	90.8%	84.9%