

**Light efficiency:**



**Light quality:**



**Color temperature:**



**Output: 5626 lm**

**Peak: 9317 cd**

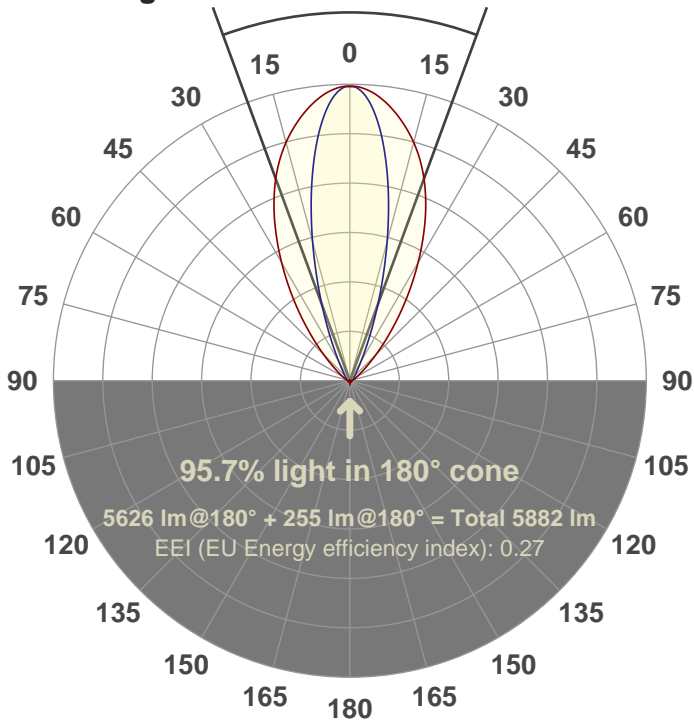
**Power: 99.3 W**

**PF: 1.0**



**40.3°**

**Beam angle**



**Product name:**

**FL100-CM-RGBW65K-IM-30X60-ELV-SM-WHITE**

**Date and time:**

**08-Jun-18 9:40:04 AM**

**Additional Information:**

**LED: RGBW**

**FIXTURE: FL100**

**FILM: 250230 (30°X60°)**

**COLOR-AMP: ON**

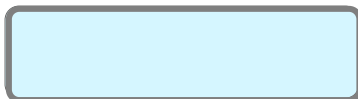
**STABILIZED: YES**

**COLOR (RGBW): WHITE**

**FWHM: 29.6°X57.4°**

**PERFORMED BY: ABDULLAH QURESHI**

**Color**

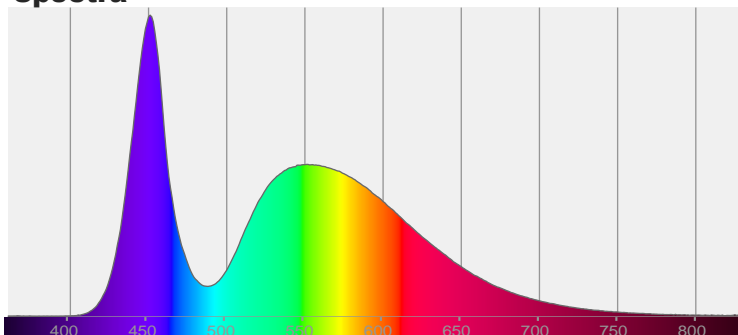


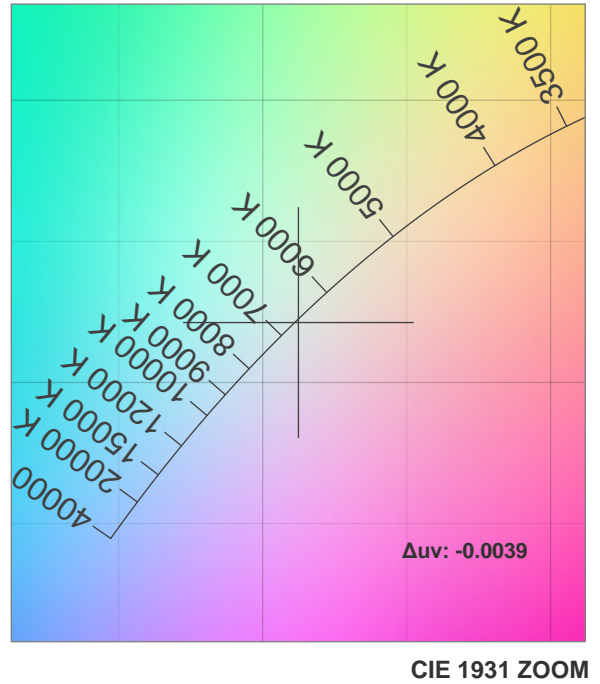
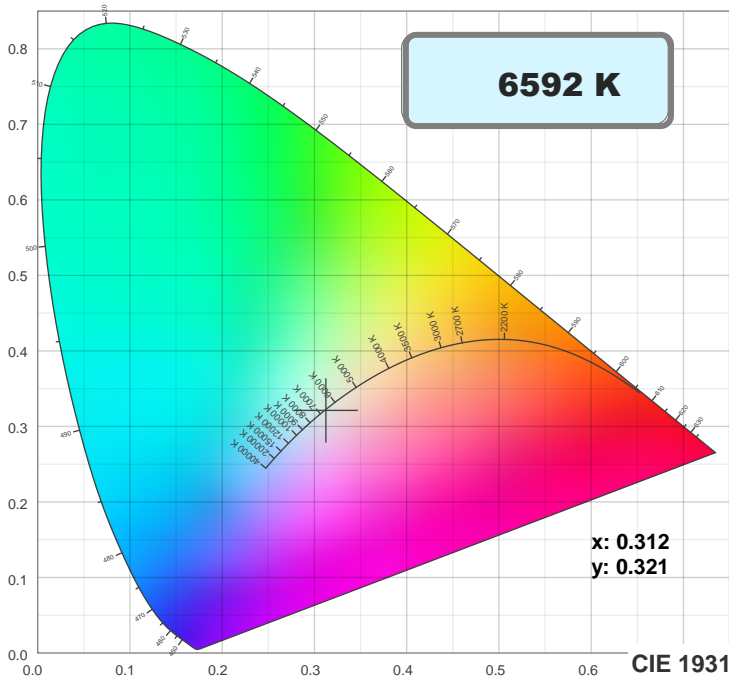
**CIE 1931**

**x: 0.312**

**y: 0.321**

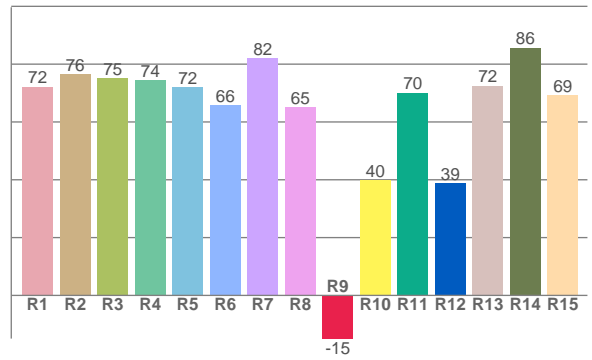
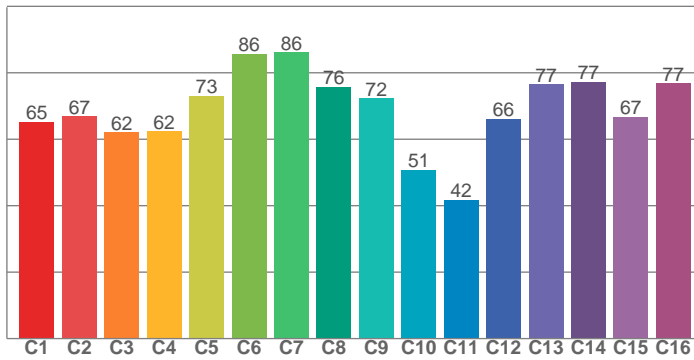
**Spectra**



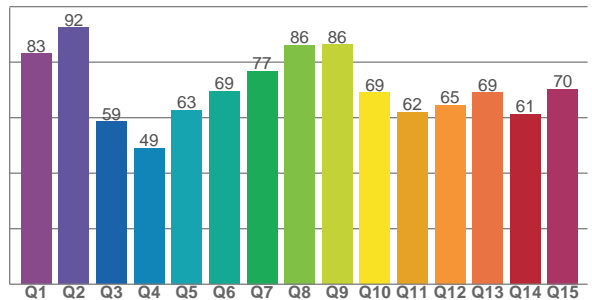


**TM30: 68.5**

**CRI: 72.9 (R1-R8)**



**CQS: 68.5**



**CRI R values, only R1-R8 are used to calculate final CRI value**

R1	R2	R3	R4	R5	R6	R7	R8	R9	R10	R11	R12	R13	R14	R15
72.1	76.4	75.2	74.4	72.0	65.8	82.1	65.1	-14.9	39.9	70.1	38.8	72.5	85.7	69.4

**TM30 C values, 16 binned values out of total of 99 C values**

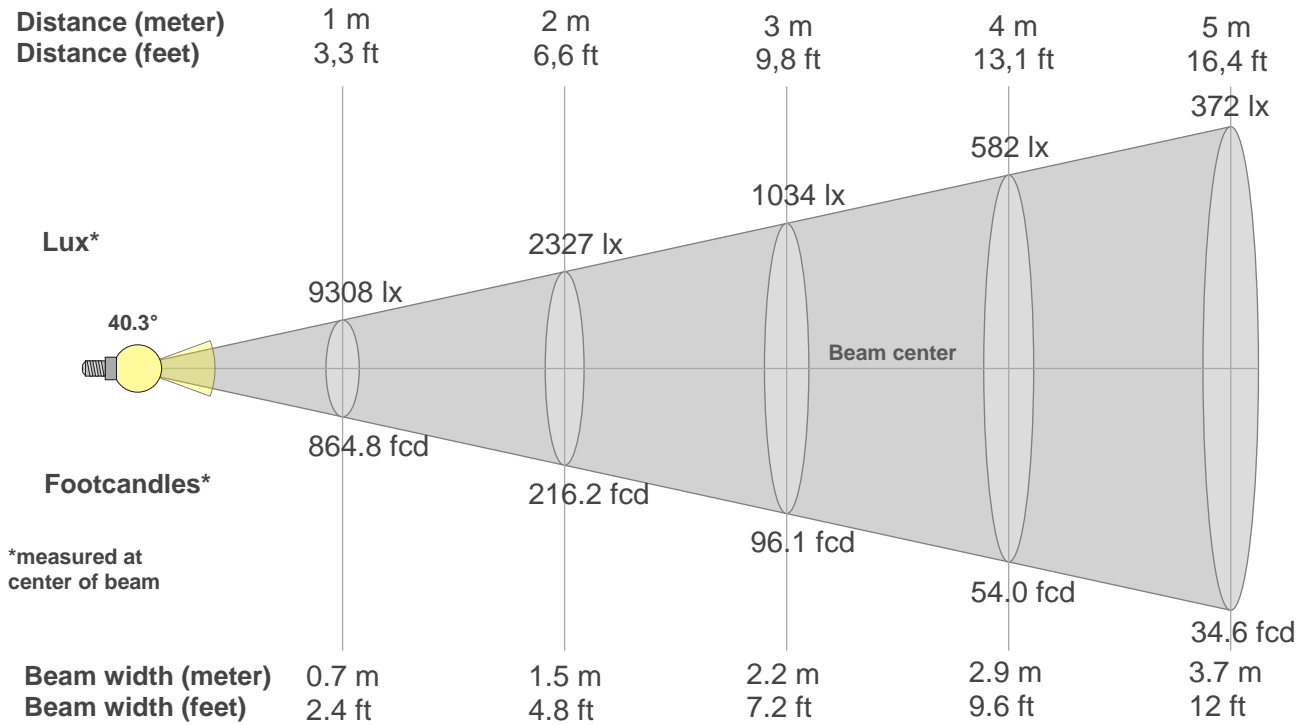
C1	C2	C3	C4	C5	C6	C7	C8	C9	C10	C11	C12	C13	C14	C15	C16
65.2	66.8	62.1	62.4	73.0	85.7	86.2	75.7	72.3	50.8	41.8	66.1	76.6	77.3	66.7	76.8

**CQS Q values**

Q1	Q2	Q3	Q4	Q5	Q6	Q7	Q8	Q9	Q10	Q11	Q12	Q13	Q14	Q15
83.0	92.4	58.6	49.2	62.8	69.5	76.8	86.1	86.3	69.1	62.0	64.6	69.1	61.2	70.3

## Color parameters

Color temperature	Color rendering index	Red component	Color fidelity	Color gamut	Color quality scale	Color coordinate cie 1931	Color coordinate cie 1931	Color coordinate	Color coordinate	Color deviation from black body
CCT	CRI	CRI R9	TM30 Rf	TM30 Rg	CQS	x	y	u	v	Δuv
6592 K	72.9	-14.9	68.5	93.4	68.5	0.312	0.321	0.201	0.309	-0.0039



### Beam intensities from 1-20m

1m	2m	3m	4m	5m	6m	7m	8m	9m	10m	11m	12m	13m	14m	15m	16m	17m	18m	19m	20m
3.3ft	6.6ft	9.8ft	13.1ft	16.4ft	19.7ft	23ft	26.2ft	29.5ft	32.8ft	36.1ft	39.4ft	42.7ft	45.9ft	49.2ft	52.5ft	55.8ft	59.1ft	62.3ft	65.6ft
9308lx	2327lx	1034lx	582lx	372lx	259lx	190lx	145lx	115lx	93lx	77lx	65lx	55lx	47lx	41lx	36lx	32lx	29lx	26lx	23lx
864.8fcd	216.2fcd	96.1fcd	54fcd	34.6fcd	24fcd	17.6fcd	13.5fcd	10.7fcd	8.6fcd	7.1fcd	6fcd	5.1fcd	4.4fcd	3.8fcd	3.4fcd	3fcd	2.7fcd	2.4fcd	2.2fcd

### Intensities in 0° c-plane

0°	2°	4°	6°	8°	10°	12°	14°	16°	18°	20°	22°	24°	26°	28°	30°	32°	34°	36°	38°
9308	9282	9175	9010	8798	8549	8268	7962	7624	7249	6833	6378	5890	5374	4846	4316	3795	3292	2811	2371
100%	100%	99%	97%	95%	92%	89%	86%	82%	78%	73%	69%	63%	58%	52%	46%	41%	35%	30%	25%

### Intensities in 90° c-plane

0°	2°	4°	6°	8°	10°	12°	14°	16°	18°	20°	22°	24°	26°	28°	30°	32°	34°	36°	38°
9308	9190	8834	8274	7565	6746	5874	4988	4127	3329	2625	2026	1542	1169	895	698	558	458	387	331
100%	99%	95%	89%	81%	72%	63%	54%	44%	36%	28%	22%	17%	13%	10%	7%	6%	5%	4%	4%

### Intensities in 180° c-plane

0°	2°	4°	6°	8°	10°	12°	14°	16°	18°	20°	22°	24°	26°	28°	30°	32°	34°	36°	38°
9308	9282	9175	9010	8798	8549	8268	7962	7624	7249	6833	6378	5890	5374	4846	4316	3795	3292	2811	2371
100%	100%	99%	97%	95%	92%	89%	86%	82%	78%	73%	69%	63%	58%	52%	46%	41%	35%	30%	25%

### Intensities in 270° c-plane

0°	2°	4°	6°	8°	10°	12°	14°	16°	18°	20°	22°	24°	26°	28°	30°	32°	34°	36°	38°
9308	9190	8834	8274	7565	6746	5874	4988	4127	3329	2625	2026	1542	1169	895	698	558	458	387	331
100%	99%	95%	89%	81%	72%	63%	54%	44%	36%	28%	22%	17%	13%	10%	7%	6%	5%	4%	4%

Beam angle 50%	Field angle 10%	Cutoff angle 2,5%	Intensity ratio in 120° cone	Intensity ratio in 90° cone
40.3°	71.9°	104.5°	90.5%	84.0%