

Light efficiency:

32 Lumen/Watt

Light quality:

CRI: 0.0

Color temperature:

0 K

Output: 3211 lm

Peak: 4732 cd

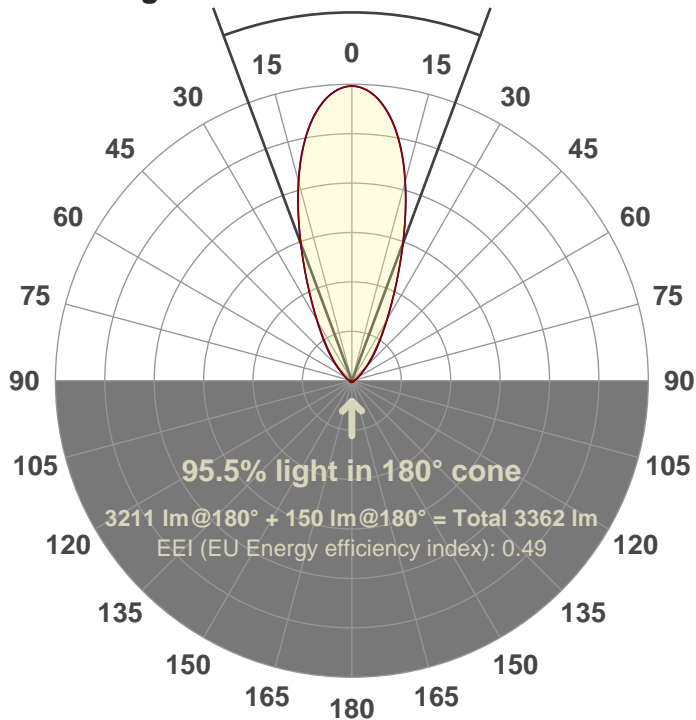
Power: 98.9 W

PF: 1.0



40.8°

Beam angle



Product name:

FL100-CM-RGBW65K-IM-40-ELV-SM-GREEN

Date and time:

05-Jun-18 3:57:54 PM

Additional Information:

LED: RGBW

FIXTURE: FL100

FILM: 250243 (40°)

COLOR-AMP: ON

STABILIZED: YES

COLOR (RGBW): GREEN

PERFORMED BY: ABDULLAH QURESHI

Color

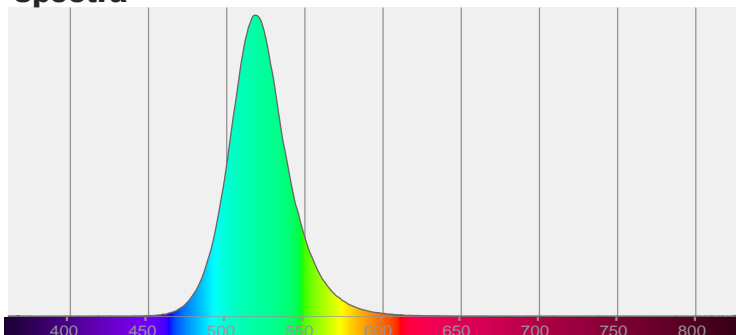


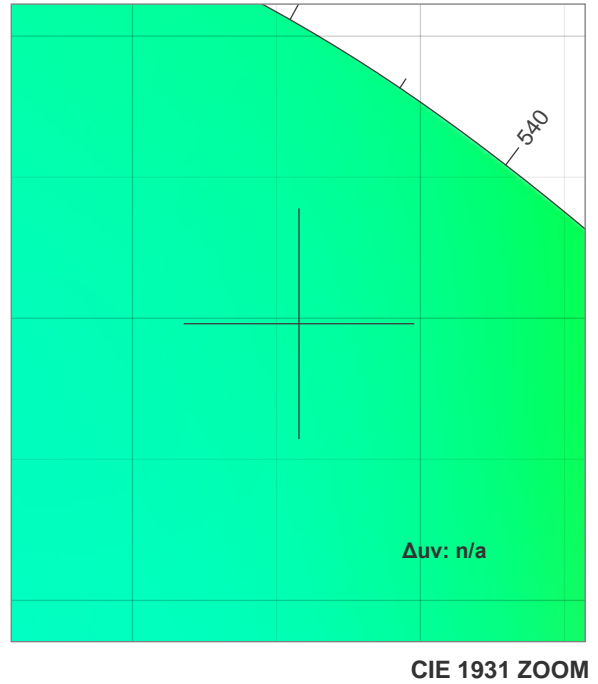
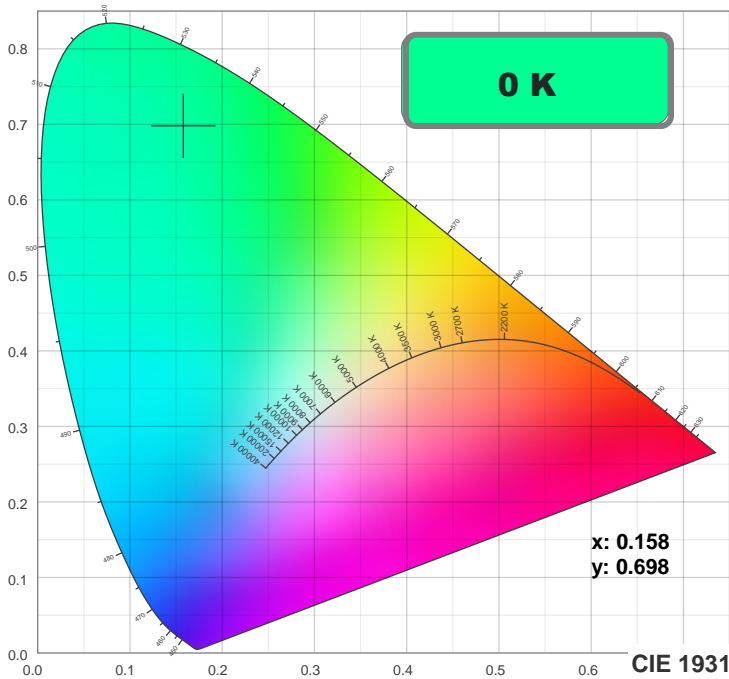
CIE 1931

x: 0.158

y: 0.698

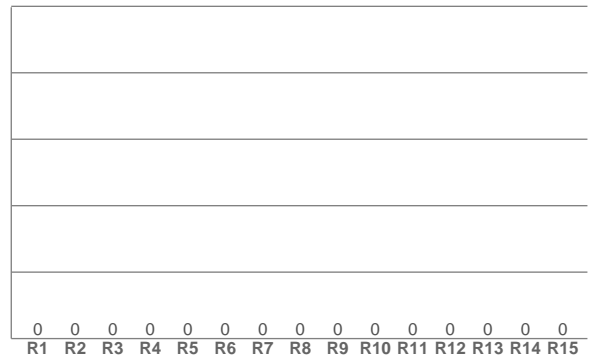
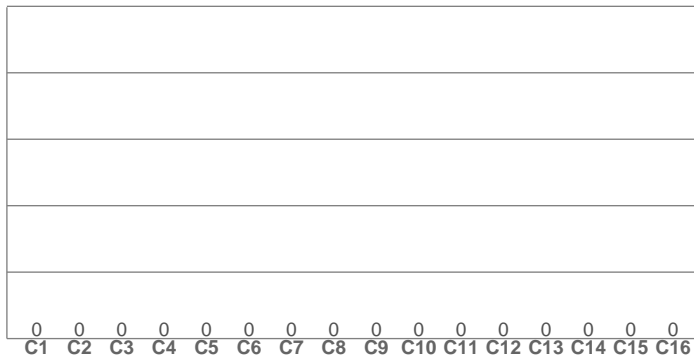
Spectra





TM30: 0.0

CRI: 0.0 (R1-R8)



CRI R values, only R1-R8 are used to calculate final CRI value

R1	R2	R3	R4	R5	R6	R7	R8	R9	R10	R11	R12	R13	R14	R15
0.0	0.0	0.0	0.0	0.0	0.0	0.0	0.0	0.0	0.0	0.0	0.0	0.0	0.0	0.0

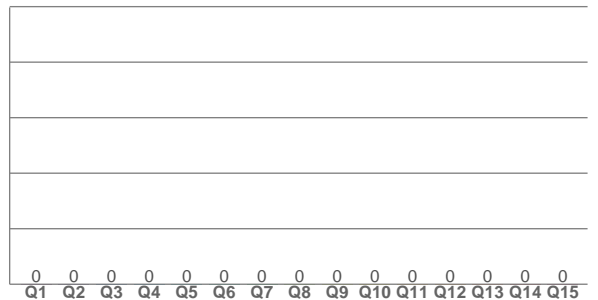
TM30 C values, 16 binned values out of total of 99 C values

C1	C2	C3	C4	C5	C6	C7	C8	C9	C10	C11	C12	C13	C14	C15	C16
0.0	0.0	0.0	0.0	0.0	0.0	0.0	0.0	0.0	0.0	0.0	0.0	0.0	0.0	0.0	0.0

CQS Q values

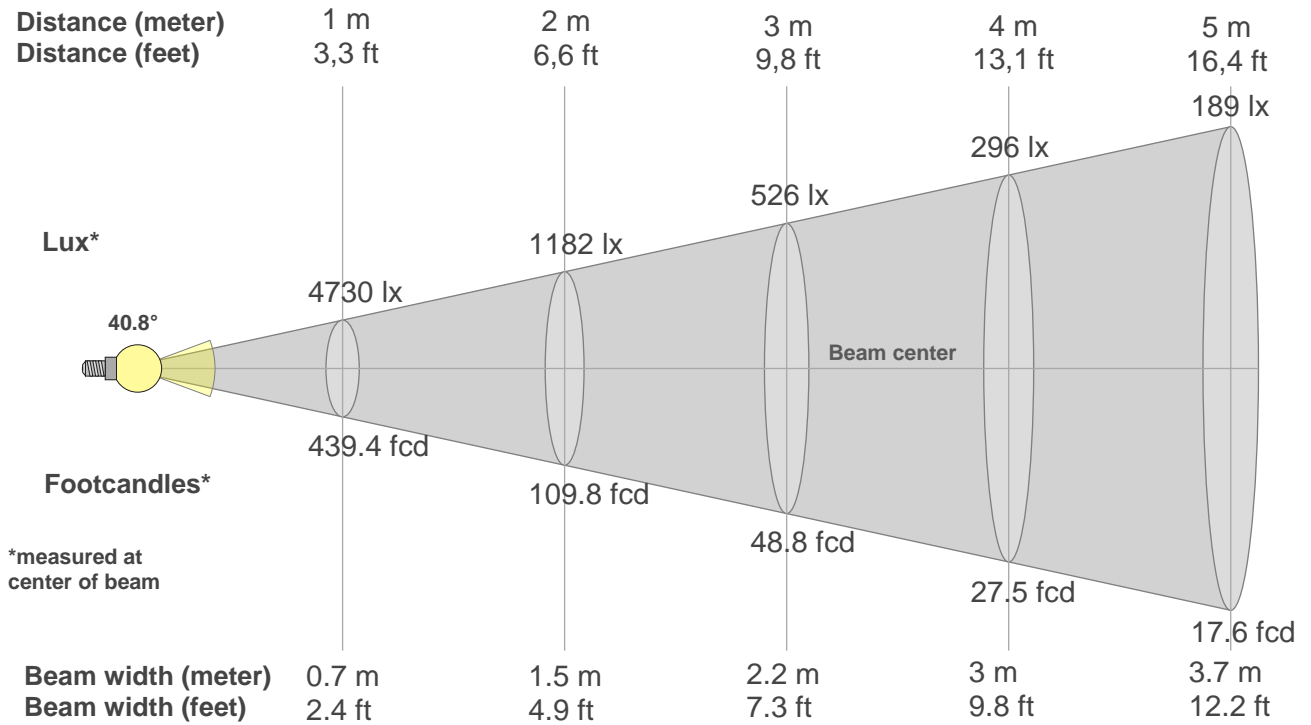
Q1	Q2	Q3	Q4	Q5	Q6	Q7	Q8	Q9	Q10	Q11	Q12	Q13	Q14	Q15
0.0	0.0	0.0	0.0	0.0	0.0	0.0	0.0	0.0	0.0	0.0	0.0	0.0	0.0	0.0

CQS: 0.0



Color parameters

Color temperature	Color rendering index	Red component	Color fidelity	Color gamut	Color quality scale	Color coordinate cie 1931	Color coordinate cie 1931	Color coordinate	Color coordinate	Color deviation from black body
CCT	CRI	CRI R9	TM30 Rf	TM30 Rg	CQS	x	y	u	v	Δuv
0 K	0.0	0.0	0.0	0.0	0.0	0.158	0.698	0.057	0.379	n/a



Beam intensities from 1-20m

1m	2m	3m	4m	5m	6m	7m	8m	9m	10m	11m	12m	13m	14m	15m	16m	17m	18m	19m	20m
3.3ft	6.6ft	9.8ft	13.1ft	16.4ft	19.7ft	23ft	26.2ft	29.5ft	32.8ft	36.1ft	39.4ft	42.7ft	45.9ft	49.2ft	52.5ft	55.8ft	59.1ft	62.3ft	65.6ft
4730lx	1182lx	526lx	296lx	189lx	131lx	97lx	74lx	58lx	47lx	39lx	33lx	28lx	24lx	21lx	18lx	16lx	15lx	13lx	12lx
439.4fcd	109.8fcd	48.8fcd	27.5fcd	17.6fcd	12.2fcd	9fcd	6.9fcd	5.4fcd	4.4fcd	3.6fcd	3.1fcd	2.6fcd	2.2fcd	2fcd	1.7fcd	1.5fcd	1.4fcd	1.2fcd	1.1fcd

Intensities in 0° c-plane

0°	2°	4°	6°	8°	10°	12°	14°	16°	18°	20°	22°	24°	26°	28°	30°	32°	34°	36°	38°
4730	4703	4620	4486	4302	4071	3791	3474	3130	2772	2421	2090	1791	1527	1302	1111	949	811	693	591
100%	99%	98%	95%	91%	86%	80%	73%	66%	59%	51%	44%	38%	32%	28%	23%	20%	17%	15%	12%

Intensities in 90° c-plane

0°	2°	4°	6°	8°	10°	12°	14°	16°	18°	20°	22°	24°	26°	28°	30°	32°	34°	36°	38°
4730	4702	4624	4492	4311	4079	3800	3481	3134	2775	2422	2090	1793	1533	1313	1128	973	842	728	630
100%	99%	98%	95%	91%	86%	80%	74%	66%	59%	51%	44%	38%	32%	28%	24%	21%	18%	15%	13%

Intensities in 180° c-plane

0°	2°	4°	6°	8°	10°	12°	14°	16°	18°	20°	22°	24°	26°	28°	30°	32°	34°	36°	38°
4730	4703	4620	4486	4302	4071	3791	3474	3130	2772	2421	2090	1791	1527	1302	1111	949	811	693	591
100%	99%	98%	95%	91%	86%	80%	73%	66%	59%	51%	44%	38%	32%	28%	23%	20%	17%	15%	12%

Intensities in 270° c-plane

0°	2°	4°	6°	8°	10°	12°	14°	16°	18°	20°	22°	24°	26°	28°	30°	32°	34°	36°	38°
4730	4702	4624	4492	4311	4079	3800	3481	3134	2775	2422	2090	1793	1533	1313	1128	973	842	728	630
100%	99%	98%	95%	91%	86%	80%	74%	66%	59%	51%	44%	38%	32%	28%	24%	21%	18%	15%	13%

Beam angle 50%	Field angle 10%	Cutoff angle 2,5%	Intensity ratio in 120° cone	Intensity ratio in 90° cone
40.8°	82.9°	120.4°	89.9%	81.9%