

**Light efficiency:**

**15 Lumen/Watt**

**Light quality:**

**CRI: 0.0**

**Color temperature:**

**0 K**

**Output: 1509 lm**

**Peak: 2288 cd**

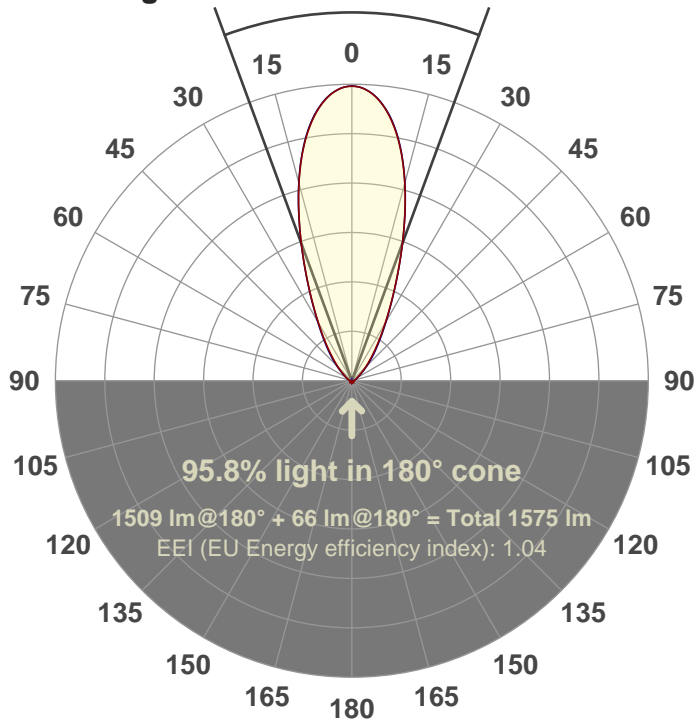
**Power: 99.7 W**

**PF: 1.0**



**40.4°**

**Beam angle**



**Product name:**

**FL100-CM-RGBW65K-IM-40-ELV-SM-RED**

**Date and time:**

**05-Jun-18 3:42:53 PM**

**Additional Information:**

**LED: RGBW**

**FIXTURE: FL100**

**FILM: 250243 (40°)**

**COLOR-AMP: ON**

**STABILIZED: YES**

**COLOR (RGBW): RED**

**PERFORMED BY: ABDULLAH QURESHI**

**Color**

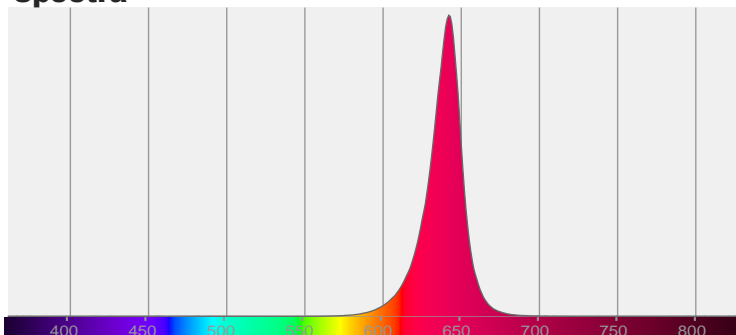


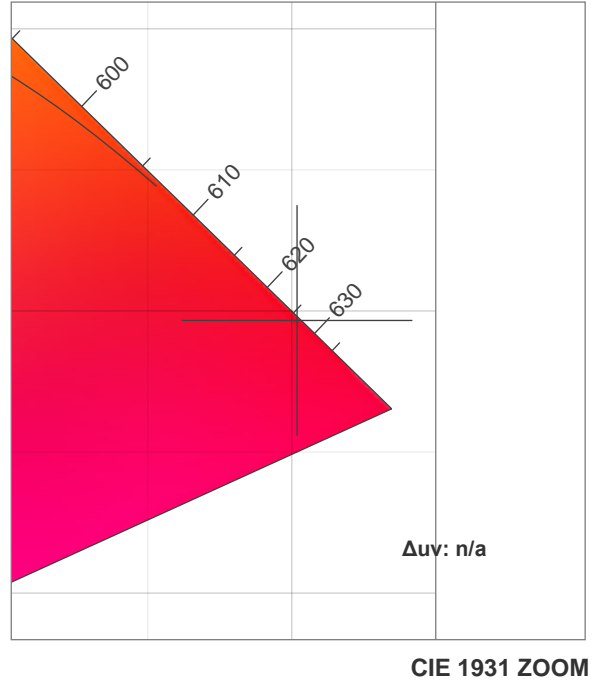
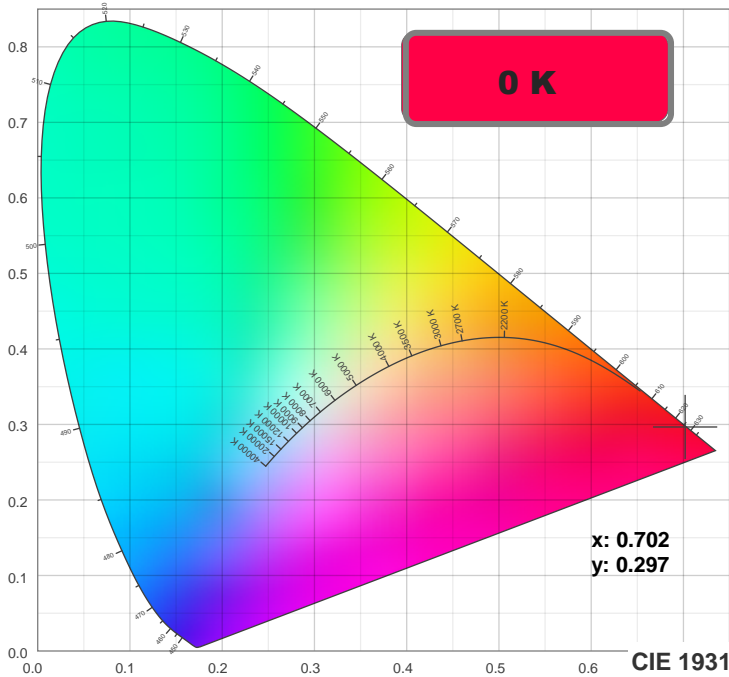
**CIE 1931**

**x: 0.702**

**y: 0.297**

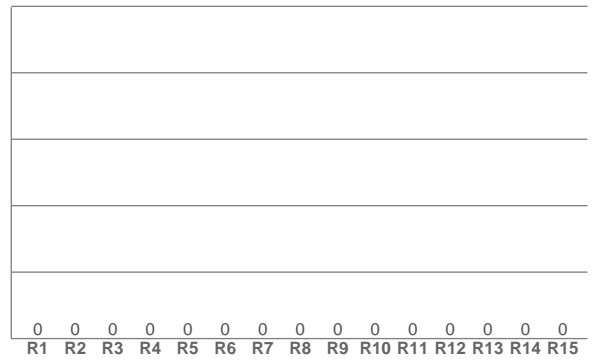
**Spectra**





**TM30: 0.0**

**CRI: 0.0 (R1-R8)**



**CRI R values, only R1-R8 are used to calculate final CRI value**

R1	R2	R3	R4	R5	R6	R7	R8	R9	R10	R11	R12	R13	R14	R15
0.0	0.0	0.0	0.0	0.0	0.0	0.0	0.0	0.0	0.0	0.0	0.0	0.0	0.0	0.0

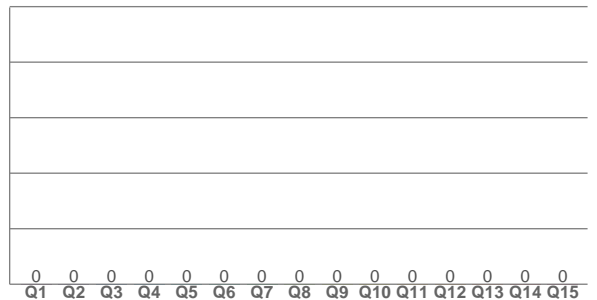
**TM30 C values, 16 binned values out of total of 99 C values**

C1	C2	C3	C4	C5	C6	C7	C8	C9	C10	C11	C12	C13	C14	C15	C16
0.0	0.0	0.0	0.0	0.0	0.0	0.0	0.0	0.0	0.0	0.0	0.0	0.0	0.0	0.0	0.0

**CQS Q values**

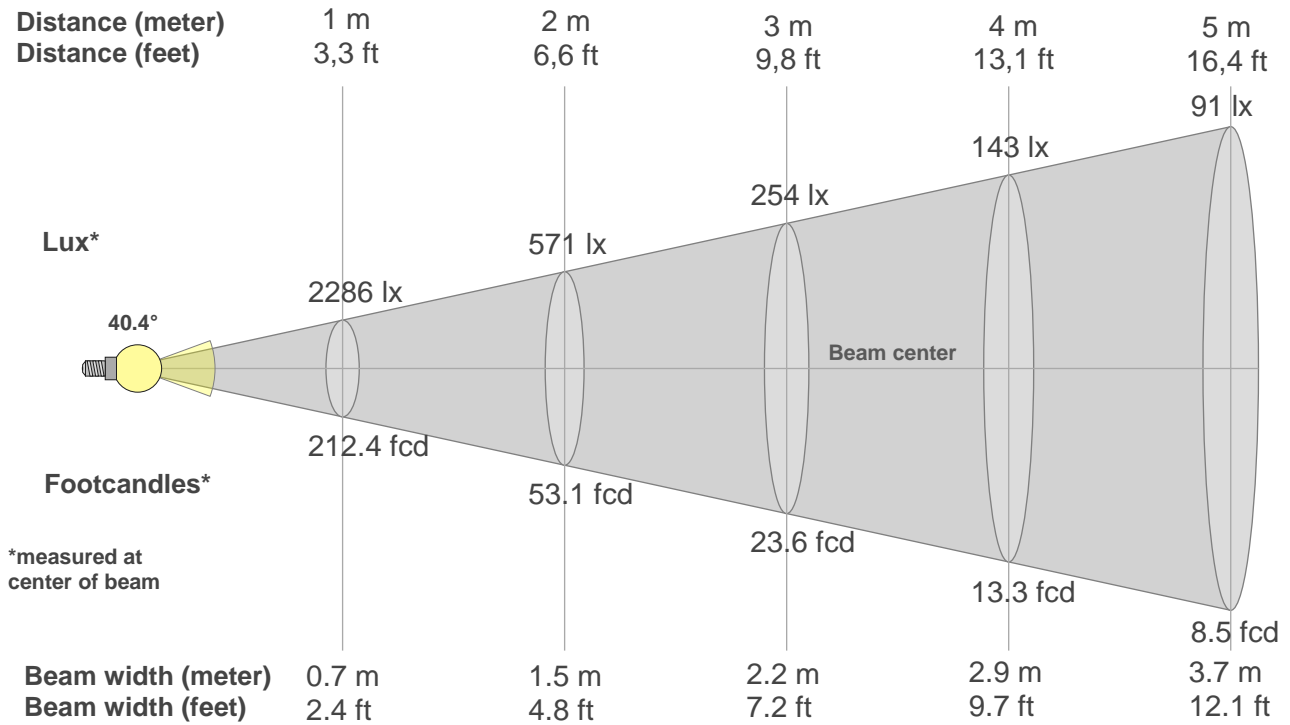
Q1	Q2	Q3	Q4	Q5	Q6	Q7	Q8	Q9	Q10	Q11	Q12	Q13	Q14	Q15
0.0	0.0	0.0	0.0	0.0	0.0	0.0	0.0	0.0	0.0	0.0	0.0	0.0	0.0	0.0

**CQS: 0.0**



## Color parameters

Color temperature	Color rendering index	Red component	Color fidelity	Color gamut	Color quality scale	Color coordinate cie 1931	Color coordinate cie 1931	Color coordinate	Color coordinate	Color deviation from black body
<b>CCT</b>	<b>CRI</b>	<b>CRI R9</b>	<b>TM30 Rf</b>	<b>TM30 Rg</b>	<b>CQS</b>	<b>x</b>	<b>y</b>	<b>u</b>	<b>v</b>	<b>Δuv</b>
<b>0 K</b>	<b>0.0</b>	<b>0.0</b>	<b>0.0</b>	<b>0.0</b>	<b>0.0</b>	<b>0.702</b>	<b>0.297</b>	<b>0.544</b>	<b>0.345</b>	<b>n/a</b>



### Beam intensities from 1-20m

1m	2m	3m	4m	5m	6m	7m	8m	9m	10m	11m	12m	13m	14m	15m	16m	17m	18m	19m	20m
3.3ft	6.6ft	9.8ft	13.1ft	16.4ft	19.7ft	23ft	26.2ft	29.5ft	32.8ft	36.1ft	39.4ft	42.7ft	45.9ft	49.2ft	52.5ft	55.8ft	59.1ft	62.3ft	65.6ft
2286lx	571lx	254lx	143lx	91lx	63lx	47lx	36lx	28lx	23lx	19lx	16lx	14lx	12lx	10lx	9lx	8lx	7lx	6lx	6lx
212.4fcd	53.1fcd	23.6fcd	13.3fcd	8.5fcd	5.9fcd	4.3fcd	3.3fcd	2.6fcd	2.1fcd	1.8fcd	1.5fcd	1.3fcd	1.1fcd	0.9fcd	0.8fcd	0.7fcd	0.7fcd	0.6fcd	0.5fcd

### Intensities in 0° c-plane

0°	2°	4°	6°	8°	10°	12°	14°	16°	18°	20°	22°	24°	26°	28°	30°	32°	34°	36°	38°
2286	2273	2234	2168	2078	1963	1826	1670	1501	1325	1154	993	848	721	612	521	443	377	320	272
100%	99%	98%	95%	91%	86%	80%	73%	66%	58%	50%	43%	37%	32%	27%	23%	19%	17%	14%	12%

### Intensities in 90° c-plane

0°	2°	4°	6°	8°	10°	12°	14°	16°	18°	20°	22°	24°	26°	28°	30°	32°	34°	36°	38°
2286	2274	2235	2171	2083	1969	1830	1673	1503	1327	1155	993	850	725	619	531	457	394	339	293
100%	99%	98%	95%	91%	86%	80%	73%	66%	58%	51%	43%	37%	32%	27%	23%	20%	17%	15%	13%

### Intensities in 180° c-plane

0°	2°	4°	6°	8°	10°	12°	14°	16°	18°	20°	22°	24°	26°	28°	30°	32°	34°	36°	38°
2286	2273	2234	2168	2078	1963	1826	1670	1501	1325	1154	993	848	721	612	521	443	377	320	272
100%	99%	98%	95%	91%	86%	80%	73%	66%	58%	50%	43%	37%	32%	27%	23%	19%	17%	14%	12%

### Intensities in 270° c-plane

0°	2°	4°	6°	8°	10°	12°	14°	16°	18°	20°	22°	24°	26°	28°	30°	32°	34°	36°	38°
2286	2274	2235	2171	2083	1969	1830	1673	1503	1327	1155	993	850	725	619	531	457	394	339	293
100%	99%	98%	95%	91%	86%	80%	73%	66%	58%	51%	43%	37%	32%	27%	23%	20%	17%	15%	13%

Beam angle 50%	Field angle 10%	Cutoff angle 2,5%	Intensity ratio in 120° cone	Intensity ratio in 90° cone
40.4°	81.6°	116.9°	90.5%	83.0%