

Light efficiency:



Light quality:



Color temperature:



Output: 5480 lm

Peak: 8152 cd

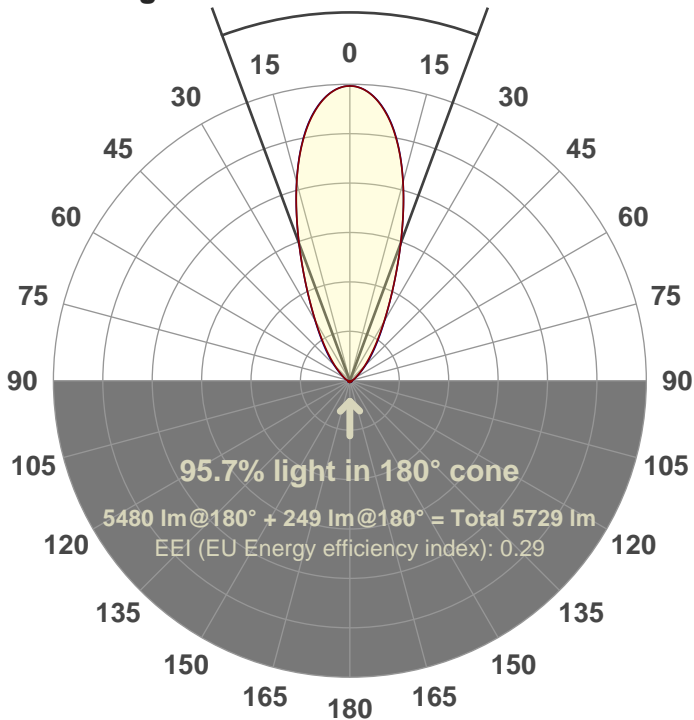
Power: 99.4 W

PF: 1.0



40.6°

Beam angle



Product name:

FL100-CM-RGBW65K-IM-40-ELV-SM-WHITE

Date and time:

05-Jun-18 4:23:54 PM

Additional Information:

LED: RGBW

FIXTURE: FL100

FILM: 250243 (40°)

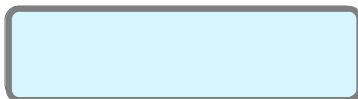
COLOR-AMP: ON

STABILIZED: YES

COLOR (RGBW): WHITE

PERFORMED BY: ABDULLAH QURESHI

Color

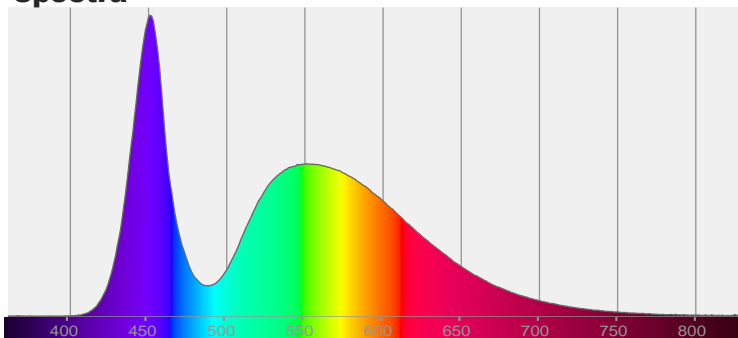


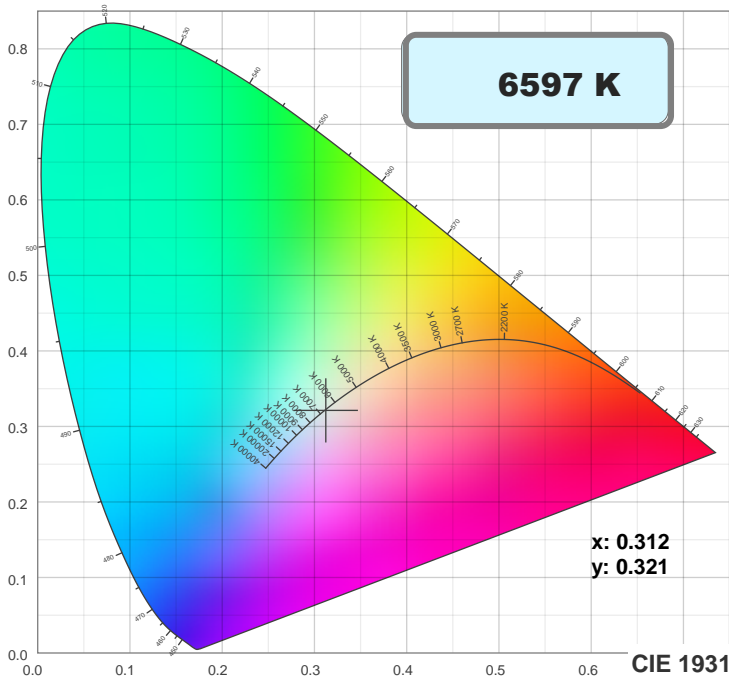
CIE 1931

x: 0.312

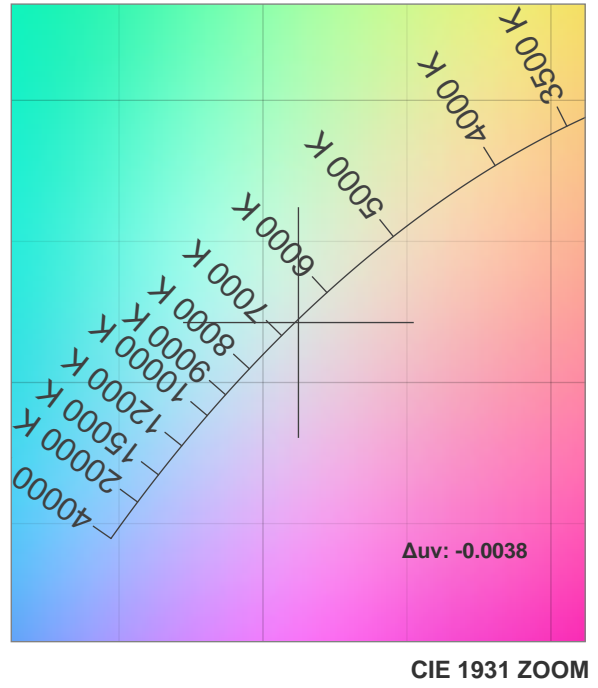
y: 0.321

Spectra



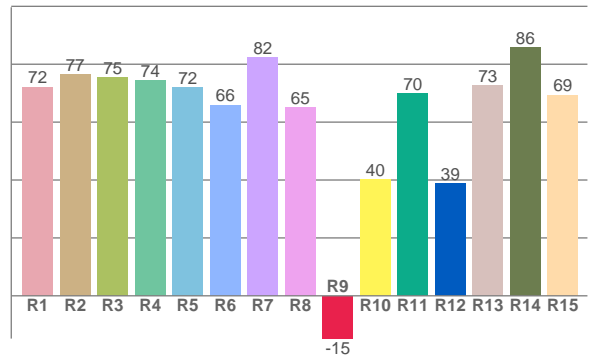
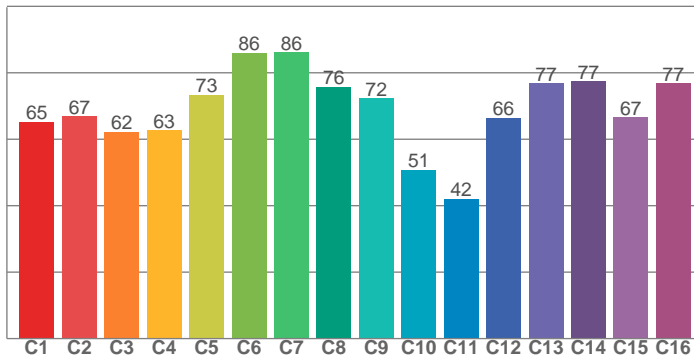


TM30: 68.7

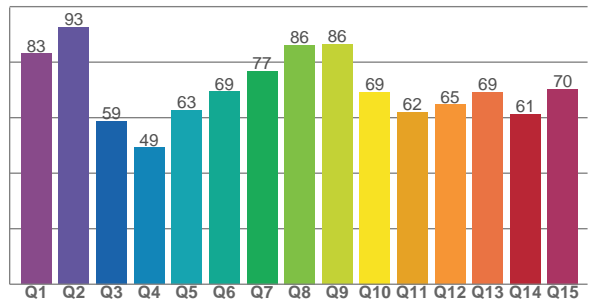


CIE 1931 ZOOM

CRI: 73.0 (R1-R8)



CQS: 68.6



CRI R values, only R1-R8 are used to calculate final CRI value

R1	R2	R3	R4	R5	R6	R7	R8	R9	R10	R11	R12	R13	R14	R15
72.2	76.6	75.4	74.5	72.0	66.0	82.3	65.2	-14.8	40.3	70.1	38.9	72.6	85.8	69.4

TM30 C values, 16 binned values out of total of 99 C values

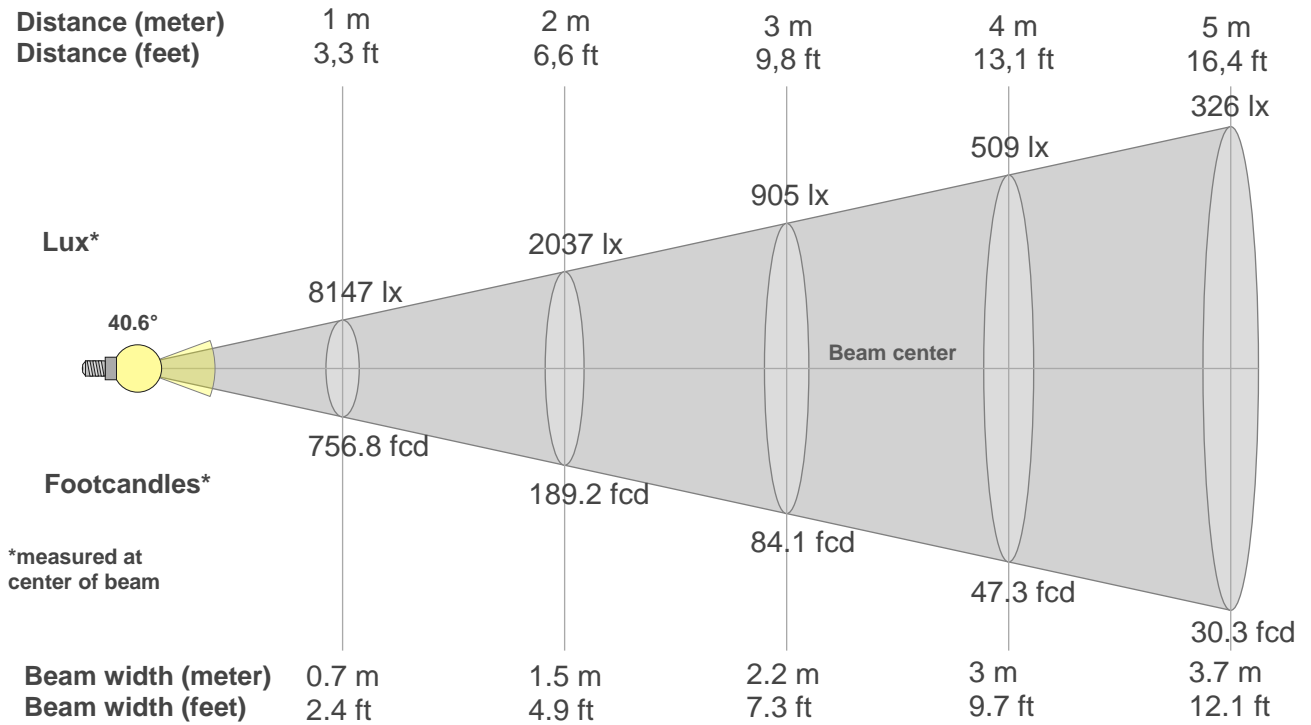
C1	C2	C3	C4	C5	C6	C7	C8	C9	C10	C11	C12	C13	C14	C15	C16
65.2	66.9	62.3	62.7	73.4	86.0	86.2	75.7	72.2	50.8	42.1	66.5	76.8	77.4	66.6	76.8

CQS Q values

Q1	Q2	Q3	Q4	Q5	Q6	Q7	Q8	Q9	Q10	Q11	Q12	Q13	Q14	Q15
83.1	92.6	58.8	49.2	62.7	69.4	76.8	86.1	86.4	69.3	62.1	64.7	69.2	61.3	70.3

Color parameters

Color temperature	Color rendering index	Red component	Color fidelity	Color gamut	Color quality scale	Color coordinate cie 1931	Color coordinate cie 1931	Color coordinate	Color coordinate	Color deviation from black body
CCT	CRI	CRI R9	TM30 Rf	TM30 Rg	CQS	x	y	u	v	Δuv
6597 K	73.0	-14.8	68.7	93.3	68.6	0.312	0.321	0.201	0.309	-0.0038



Beam intensities from 1-20m

1m	2m	3m	4m	5m	6m	7m	8m	9m	10m	11m	12m	13m	14m	15m	16m	17m	18m	19m	20m
3.3ft	6.6ft	9.8ft	13.1ft	16.4ft	19.7ft	23ft	26.2ft	29.5ft	32.8ft	36.1ft	39.4ft	42.7ft	45.9ft	49.2ft	52.5ft	55.8ft	59.1ft	62.3ft	65.6ft
8147lx	2037lx	905lx	509lx	326lx	226lx	166lx	127lx	101lx	81lx	67lx	57lx	48lx	42lx	36lx	32lx	28lx	25lx	23lx	20lx
756.8fcd	189.2fcd	84.1fcd	47.3fcd	30.3fcd	21fcd	15.4fcd	11.8fcd	9.3fcd	7.6fcd	6.3fcd	5.3fcd	4.5fcd	3.9fcd	3.4fcd	3fcd	2.6fcd	2.3fcd	2.1fcd	1.9fcd

Intensities in 0° c-plane

0°	2°	4°	6°	8°	10°	12°	14°	16°	18°	20°	22°	24°	26°	28°	30°	32°	34°	36°	38°
8147	8099	7958	7726	7405	7003	6523	5973	5373	4752	4141	3570	3055	2604	2217	1891	1615	1380	1178	1004
100%	99%	98%	95%	91%	86%	80%	73%	66%	58%	51%	44%	38%	32%	27%	23%	20%	17%	14%	12%

Intensities in 90° c-plane

0°	2°	4°	6°	8°	10°	12°	14°	16°	18°	20°	22°	24°	26°	28°	30°	32°	34°	36°	38°
8147	8099	7962	7737	7424	7022	6534	5980	5375	4752	4139	3565	3052	2609	2233	1917	1653	1429	1236	1069
100%	99%	98%	95%	91%	86%	80%	73%	66%	58%	51%	44%	37%	32%	27%	24%	20%	18%	15%	13%

Intensities in 180° c-plane

0°	2°	4°	6°	8°	10°	12°	14°	16°	18°	20°	22°	24°	26°	28°	30°	32°	34°	36°	38°
8147	8099	7958	7726	7405	7003	6523	5973	5373	4752	4141	3570	3055	2604	2217	1891	1615	1380	1178	1004
100%	99%	98%	95%	91%	86%	80%	73%	66%	58%	51%	44%	38%	32%	27%	23%	20%	17%	14%	12%

Intensities in 270° c-plane

0°	2°	4°	6°	8°	10°	12°	14°	16°	18°	20°	22°	24°	26°	28°	30°	32°	34°	36°	38°
8147	8099	7962	7737	7424	7022	6534	5980	5375	4752	4139	3565	3052	2609	2233	1917	1653	1429	1236	1069
100%	99%	98%	95%	91%	86%	80%	73%	66%	58%	51%	44%	37%	32%	27%	24%	20%	18%	15%	13%

Beam angle 50%	Field angle 10%	Cutoff angle 2,5%	Intensity ratio in 120° cone	Intensity ratio in 90° cone
40.6°	82.6°	119.7°	90.1%	82.2%