

Light efficiency:



Light quality:



Color temperature:



Output: 1059 lm

Peak: 5693 cd

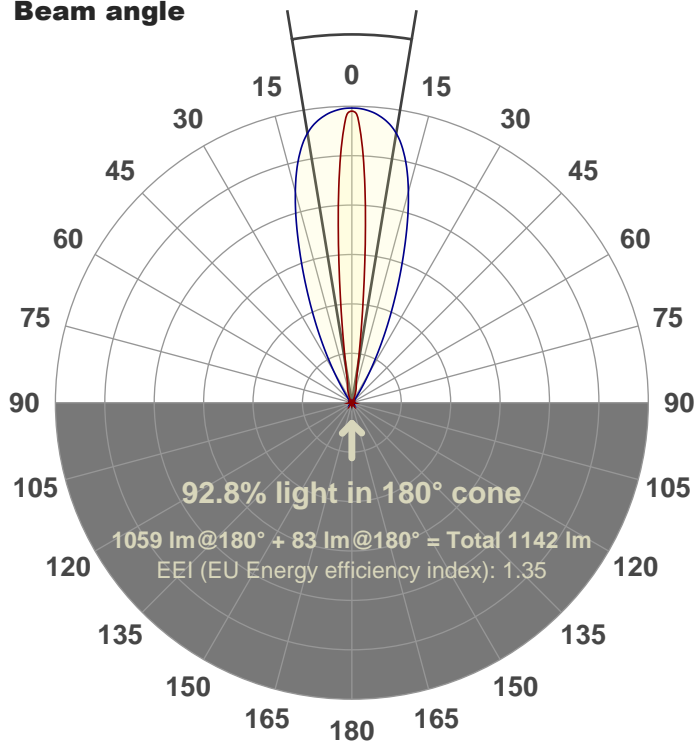
Power: 98.8 W

PF: 1.0



18.7°

Beam angle



Product name:

FL100-CM-RGBW65K-IM-40X10-ELV-SM-BLUE

Date and time:

08-Jun-18 4:02:26 PM

Additional Information:

LED: RGBW

FIXTURE: FL100

FILM: 250237 (40°X1°)

COLOR-AMP: ON

STABILIZED: YES

COLOR (RGBW): BLUE

FWHM: 39.8°X10.4°

PERFORMED BY: ABDULLAH QURESHI

Color

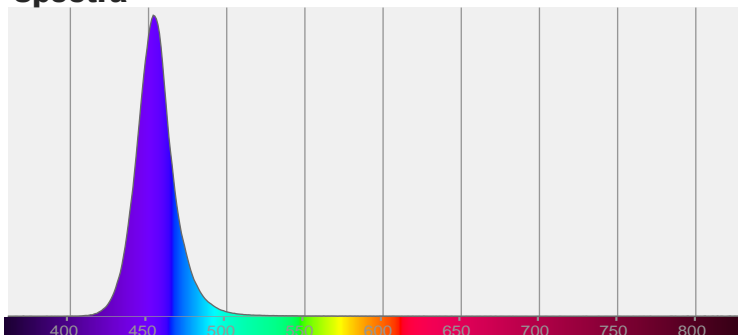


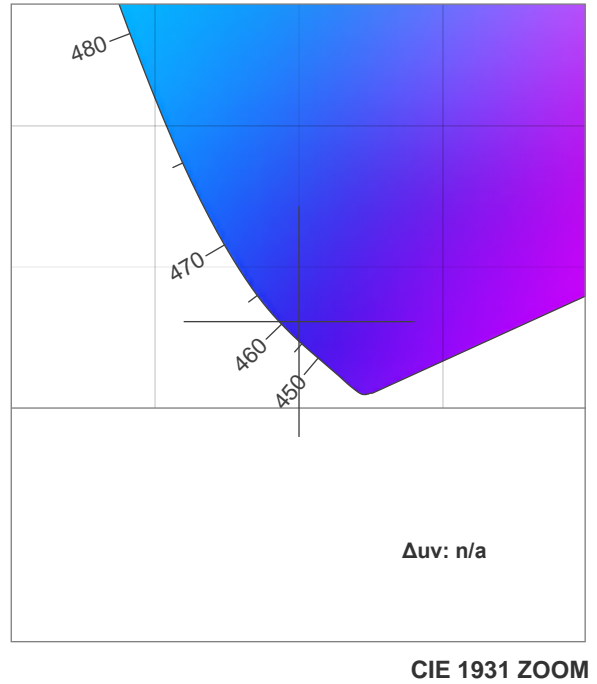
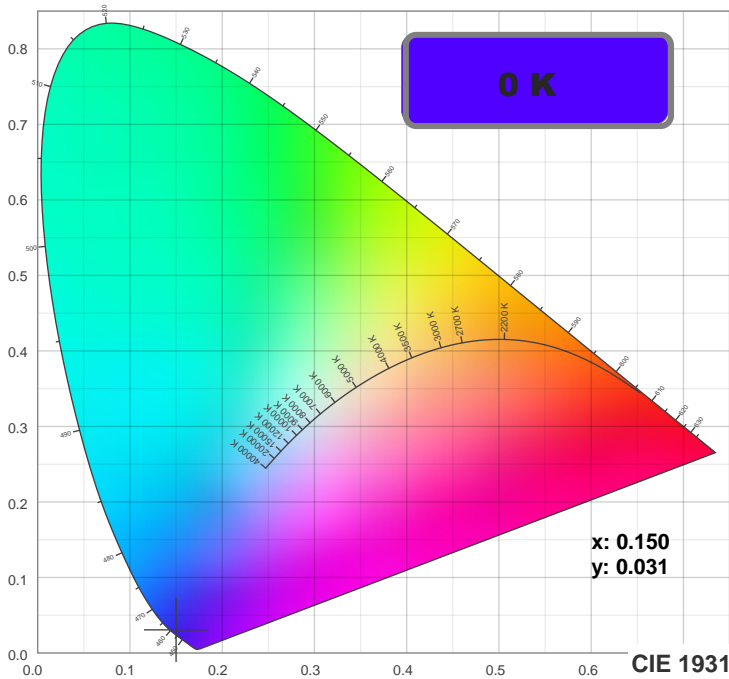
CIE 1931

x: 0.150

y: 0.031

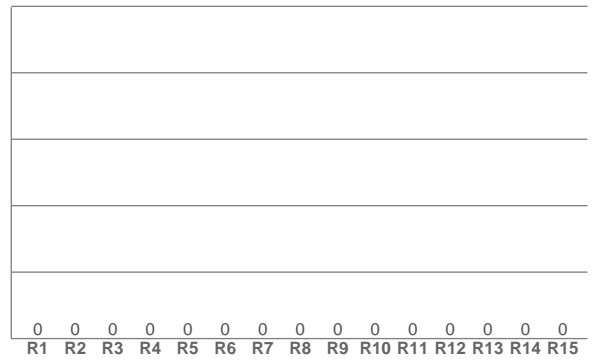
Spectra





TM30: 0.0

CRI: 0.0 (R1-R8)



CRI R values, only R1-R8 are used to calculate final CRI value

R1	R2	R3	R4	R5	R6	R7	R8	R9	R10	R11	R12	R13	R14	R15
0.0	0.0	0.0	0.0	0.0	0.0	0.0	0.0	0.0	0.0	0.0	0.0	0.0	0.0	0.0

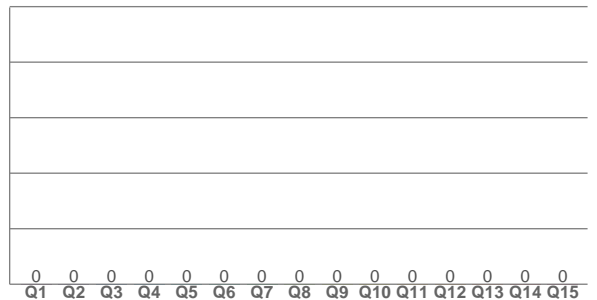
TM30 C values, 16 binned values out of total of 99 C values

C1	C2	C3	C4	C5	C6	C7	C8	C9	C10	C11	C12	C13	C14	C15	C16
0.0	0.0	0.0	0.0	0.0	0.0	0.0	0.0	0.0	0.0	0.0	0.0	0.0	0.0	0.0	0.0

CQS Q values

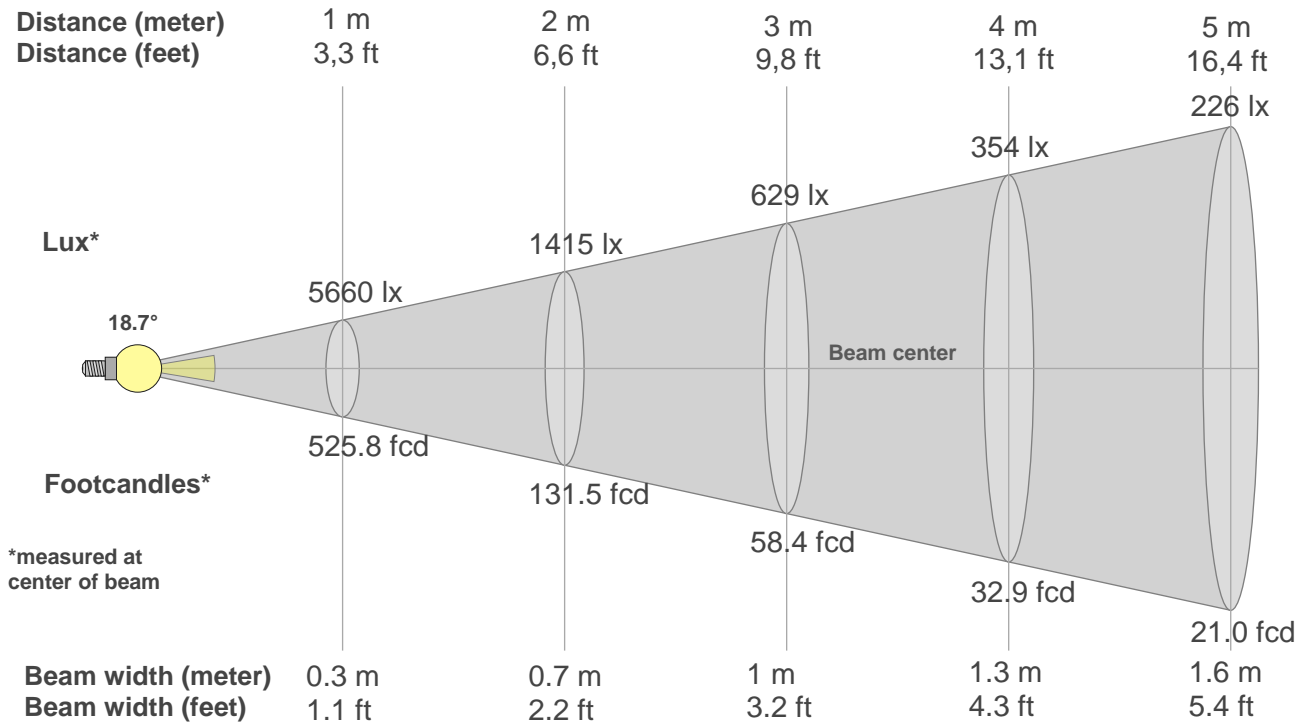
Q1	Q2	Q3	Q4	Q5	Q6	Q7	Q8	Q9	Q10	Q11	Q12	Q13	Q14	Q15
0.0	0.0	0.0	0.0	0.0	0.0	0.0	0.0	0.0	0.0	0.0	0.0	0.0	0.0	0.0

CQS: 0.0



Color parameters

Color temperature	Color rendering index	Red component	Color fidelity	Color gamut	Color quality scale	Color coordinate cie 1931	Color coordinate cie 1931	Color coordinate	Color coordinate	Color deviation from black body
CCT	CRI	CRI R9	TM30 Rf	TM30 Rg	CQS	x	y	u	v	Δuv
0 K	0.0	0.0	0.0	0.0	0.0	0.150	0.031	0.196	0.060	n/a



Beam intensities from 1-20m

1m	2m	3m	4m	5m	6m	7m	8m	9m	10m	11m	12m	13m	14m	15m	16m	17m	18m	19m	20m
3.3ft	6.6ft	9.8ft	13.1ft	16.4ft	19.7ft	23ft	26.2ft	29.5ft	32.8ft	36.1ft	39.4ft	42.7ft	45.9ft	49.2ft	52.5ft	55.8ft	59.1ft	62.3ft	65.6ft
5660lx	1415lx	629lx	354lx	226lx	157lx	116lx	88lx	70lx	57lx	47lx	39lx	33lx	29lx	25lx	22lx	20lx	17lx	16lx	14lx
525.8fcd	131.5fcd	58.4fcd	32.9fcd	21fcd	14.6fcd	10.7fcd	8.2fcd	6.5fcd	5.3fcd	4.3fcd	3.7fcd	3.1fcd	2.7fcd	2.3fcd	2.1fcd	1.8fcd	1.6fcd	1.5fcd	1.3fcd

Intensities in 0° c-plane

0°	1°	2°	3°	4°	5°	6°	7°	8°	9°	10°	11°	12°	13°	14°	15°	16°	17°	18°	19°
5660	5532	5123	4506	3746	2939	2194	1581	1116	804	605	487	418	375	347	325	302	280	255	227
100%	98%	91%	80%	66%	52%	39%	28%	20%	14%	11%	9%	7%	7%	6%	6%	5%	5%	5%	4%

Intensities in 90° c-plane

0°	1°	2°	3°	4°	5°	6°	7°	8°	9°	10°	11°	12°	13°	14°	15°	16°	17°	18°	19°
5660	5691	5680	5659	5630	5591	5541	5481	5407	5313	5198	5054	4882	4687	4464	4217	3955	3676	3387	3097
100%	101%	100%	100%	99%	99%	98%	97%	96%	94%	92%	89%	86%	83%	79%	75%	70%	65%	60%	55%

Intensities in 180° c-plane

0°	1°	2°	3°	4°	5°	6°	7°	8°	9°	10°	11°	12°	13°	14°	15°	16°	17°	18°	19°
5660	5532	5123	4506	3746	2939	2194	1581	1116	804	605	487	418	375	347	325	302	280	255	227
100%	98%	91%	80%	66%	52%	39%	28%	20%	14%	11%	9%	7%	7%	6%	6%	5%	5%	5%	4%

Intensities in 270° c-plane

0°	1°	2°	3°	4°	5°	6°	7°	8°	9°	10°	11°	12°	13°	14°	15°	16°	17°	18°	19°
5660	5691	5680	5659	5630	5591	5541	5481	5407	5313	5198	5054	4882	4687	4464	4217	3955	3676	3387	3097
100%	101%	100%	100%	99%	99%	98%	97%	96%	94%	92%	89%	86%	83%	79%	75%	70%	65%	60%	55%

Beam angle 50%	Field angle 10%	Cutoff angle 2,5%	Intensity ratio in 120° cone	Intensity ratio in 90° cone
18.7°	33.8°	58.5°	86.4%	82.4%