

Light efficiency:



Light quality:



Color temperature:



Output: 1058 lm

Peak: 3239 cd

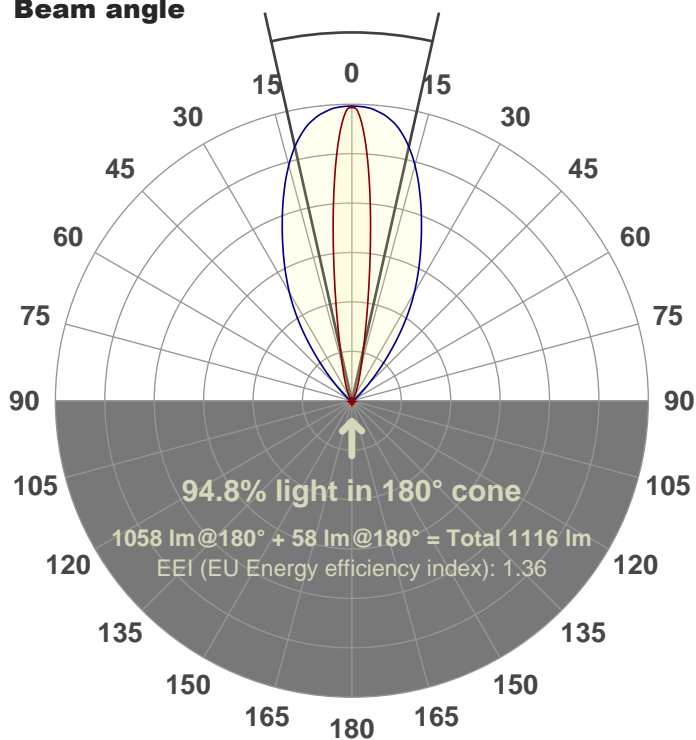
Power: 99.2 W

PF: 1.0



25.3°

Beam angle



Product name:

FL100-CM-RGBW65K-IM-60X10-ELV-SM-BLUE

Date and time:

06-Jun-18 2:01:57 PM

Additional Information:

LED: RGBW

FIXTURE: FL100

FILM: 250233 (60°X10°)

COLOR-AMP: ON

STABILIZED: YES

COLOR (RGBW): BLUE

FWHM: 53.9°X14.3°

PERFORMED BY: ABDULLAH QURESHI

Color

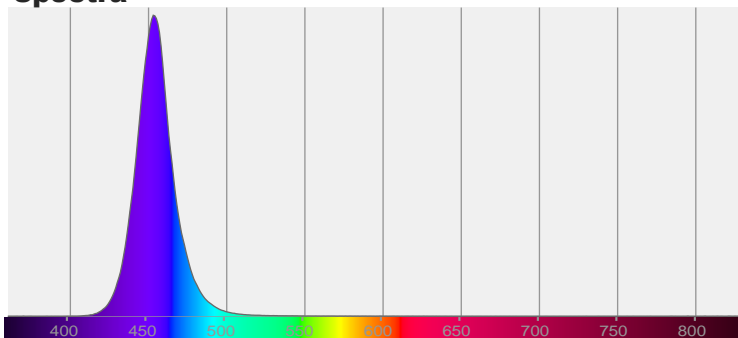


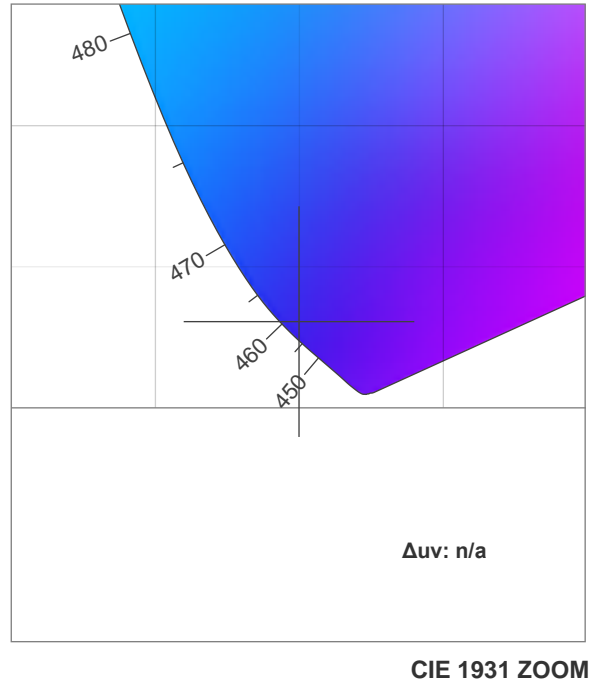
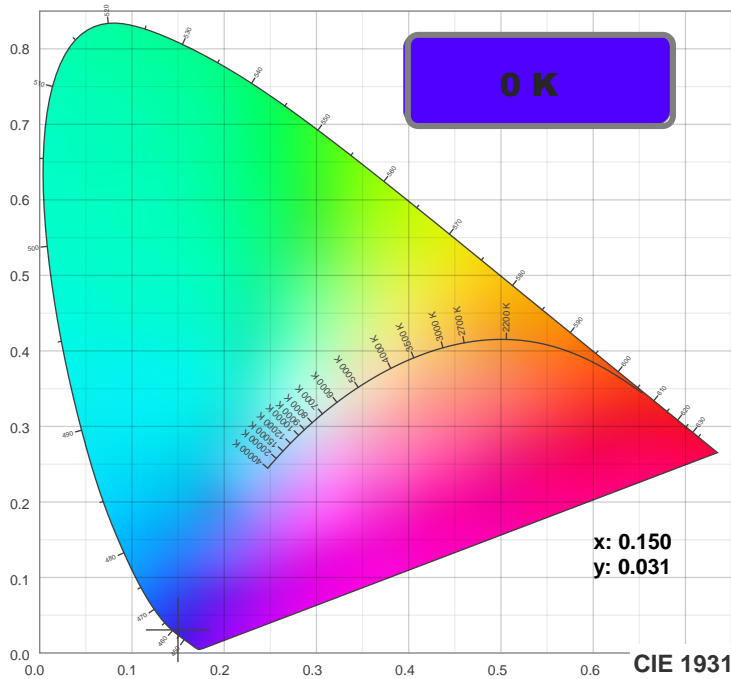
CIE 1931

x: 0.150

y: 0.031

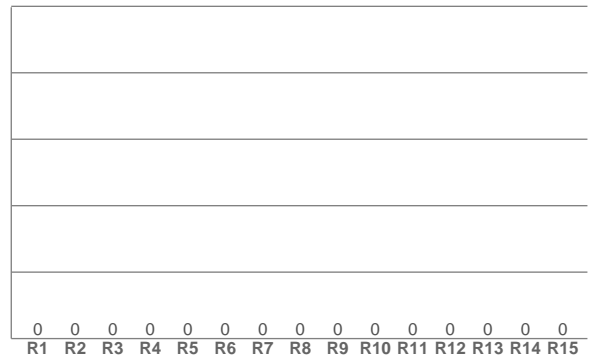
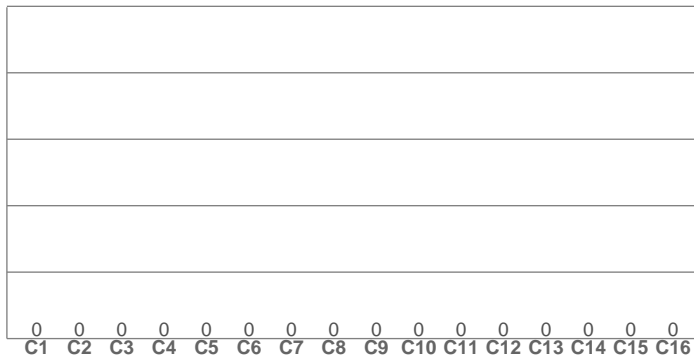
Spectra





TM30: 0.0

CRI: 0.0 (R1-R8)



CRI R values, only R1-R8 are used to calculate final CRI value

R1	R2	R3	R4	R5	R6	R7	R8	R9	R10	R11	R12	R13	R14	R15
0.0	0.0	0.0	0.0	0.0	0.0	0.0	0.0	0.0	0.0	0.0	0.0	0.0	0.0	0.0

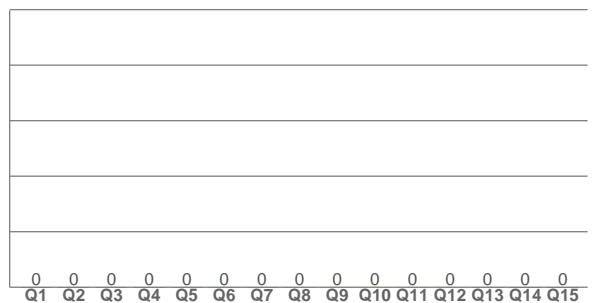
TM30 C values, 16 binned values out of total of 99 C values

C1	C2	C3	C4	C5	C6	C7	C8	C9	C10	C11	C12	C13	C14	C15	C16
0.0	0.0	0.0	0.0	0.0	0.0	0.0	0.0	0.0	0.0	0.0	0.0	0.0	0.0	0.0	0.0

CQS Q values

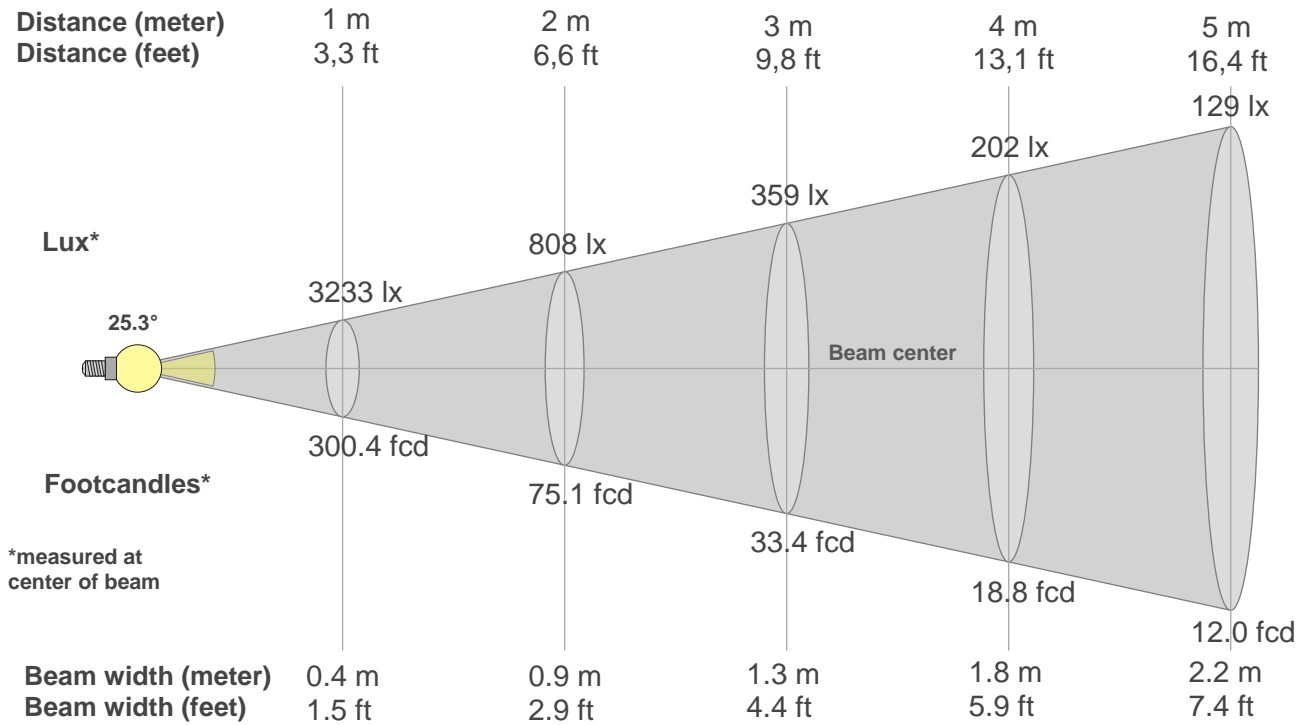
Q1	Q2	Q3	Q4	Q5	Q6	Q7	Q8	Q9	Q10	Q11	Q12	Q13	Q14	Q15
0.0	0.0	0.0	0.0	0.0	0.0	0.0	0.0	0.0	0.0	0.0	0.0	0.0	0.0	0.0

CQS: 0.0



Color parameters

Color temperature	Color rendering index	Red component	Color fidelity	Color gamut	Color quality scale	Color coordinate cie 1931	Color coordinate cie 1931	Color coordinate	Color coordinate	Color deviation from black body
CCT	CRI	CRI R9	TM30 Rf	TM30 Rg	CQS	x	y	u	v	Δuv
0 K	0.0	0.0	0.0	0.0	0.0	0.150	0.031	0.195	0.060	n/a



Beam intensities from 1-20m

1m	2m	3m	4m	5m	6m	7m	8m	9m	10m	11m	12m	13m	14m	15m	16m	17m	18m	19m	20m
3.3ft	6.6ft	9.8ft	13.1ft	16.4ft	19.7ft	23ft	26.2ft	29.5ft	32.8ft	36.1ft	39.4ft	42.7ft	45.9ft	49.2ft	52.5ft	55.8ft	59.1ft	62.3ft	65.6ft
3233lx	808lx	359lx	202lx	129lx	90lx	66lx	51lx	40lx	32lx	27lx	22lx	19lx	16lx	14lx	13lx	11lx	10lx	9lx	8lx
300.4fcd	75.1fcd	33.4fcd	18.8fcd	12fcd	8.3fcd	6.1fcd	4.7fcd	3.7fcd	3fcd	2.5fcd	2.1fcd	1.8fcd	1.5fcd	1.3fcd	1.2fcd	1fcd	0.9fcd	0.8fcd	0.8fcd

Intensities in 0° c-plane

0°	2°	4°	6°	8°	10°	12°	14°	16°	18°	20°	22°	24°	26°	28°	30°	32°	34°	36°	38°
3233	3053	2574	1965	1383	945	650	464	348	268	208	163	126	100	82	67	58	48	41	37
100%	94%	80%	61%	43%	29%	20%	14%	11%	8%	6%	5%	4%	3%	3%	2%	2%	1%	1%	1%

Intensities in 90° c-plane

0°	2°	4°	6°	8°	10°	12°	14°	16°	18°	20°	22°	24°	26°	28°	30°	32°	34°	36°	38°
3233	3233	3214	3172	3111	3023	2904	2759	2593	2412	2228	2042	1866	1698	1534	1373	1206	1032	858	689
100%	100%	99%	98%	96%	94%	90%	85%	80%	75%	69%	63%	58%	53%	47%	42%	37%	32%	27%	21%

Intensities in 180° c-plane

0°	2°	4°	6°	8°	10°	12°	14°	16°	18°	20°	22°	24°	26°	28°	30°	32°	34°	36°	38°
3233	3053	2574	1965	1383	945	650	464	348	268	208	163	126	100	82	67	58	48	41	37
100%	94%	80%	61%	43%	29%	20%	14%	11%	8%	6%	5%	4%	3%	3%	2%	2%	1%	1%	1%

Intensities in 270° c-plane

0°	2°	4°	6°	8°	10°	12°	14°	16°	18°	20°	22°	24°	26°	28°	30°	32°	34°	36°	38°
3233	3233	3214	3172	3111	3023	2904	2759	2593	2412	2228	2042	1866	1698	1534	1373	1206	1032	858	689
100%	100%	99%	98%	96%	94%	90%	85%	80%	75%	69%	63%	58%	53%	47%	42%	37%	32%	27%	21%

Beam angle 50%	Field angle 10%	Cutoff angle 2,5%	Intensity ratio in 120° cone	Intensity ratio in 90° cone
25.3°	50.1°	76.8°	89.5%	84.2%