

Light efficiency:



Light quality:



Color temperature:



Output: 1015 lm

Peak: 1568 cd

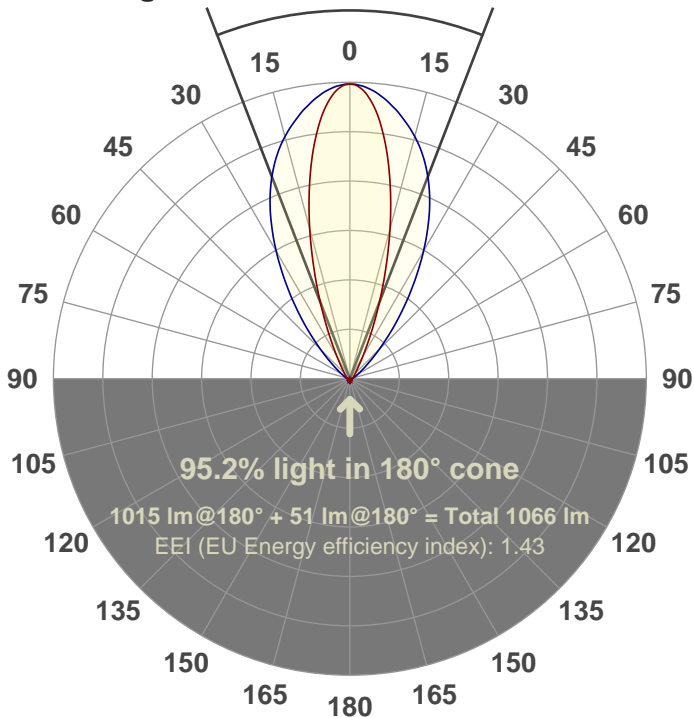
Power: 99.4 W

PF: 1.0



42.2°

Beam angle



Product name:

FL100-CM-RGBW65K-IM-60X30-ELV-SM-BLUE

Date and time:

12-Jun-18 12:38:51 PM

Additional Information:

LED: RGBW

FIXTURE: FL100

FILM: 250235 (60°X30°)

COLOR-AMP: ON

STABILIZED: YES

COLOR (RGBW): BLUE

FWHM: 60°X31.2°

PERFORMED BY: ABDULLAH QURESHI

Color

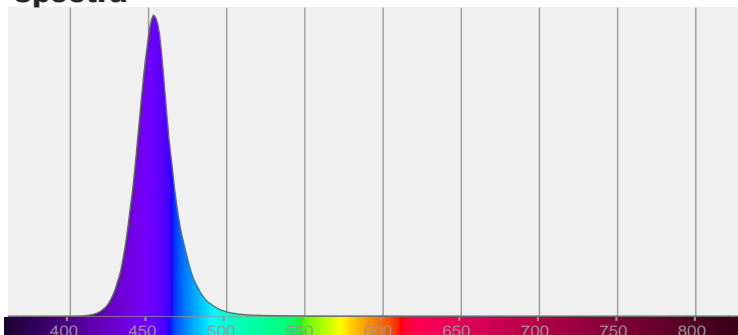


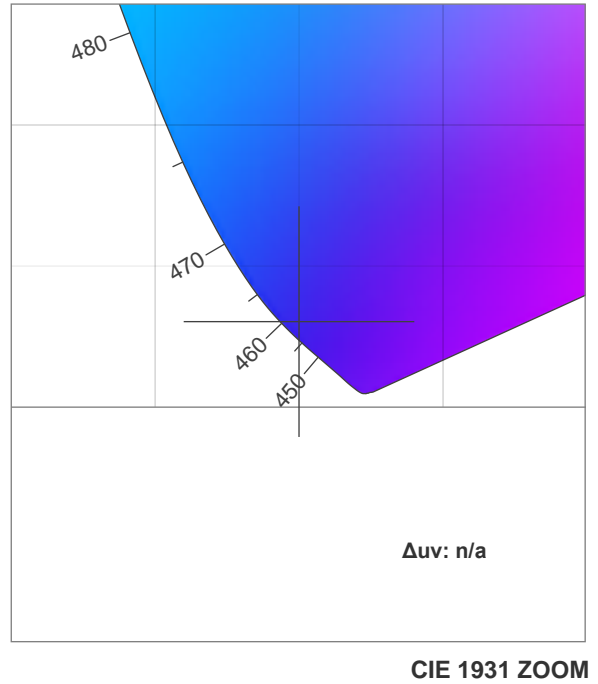
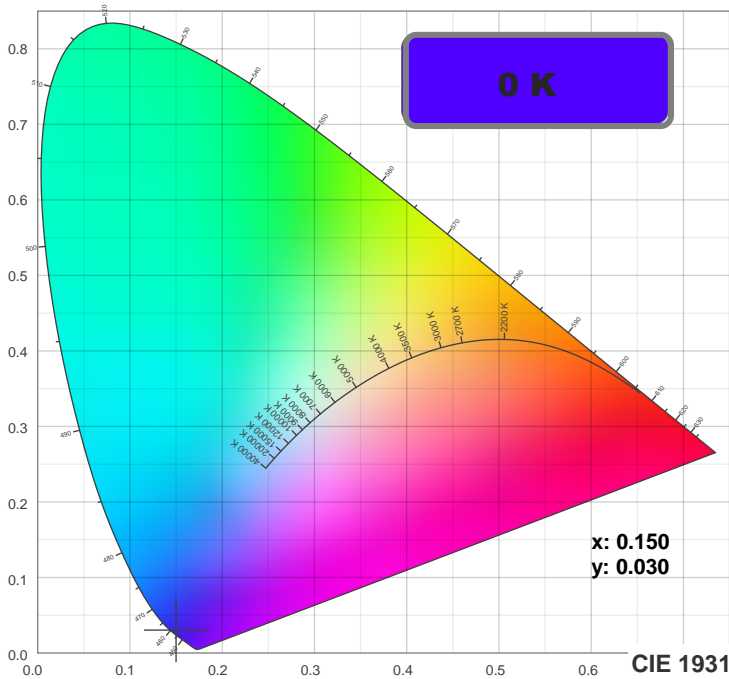
CIE 1931

x: 0.150

y: 0.030

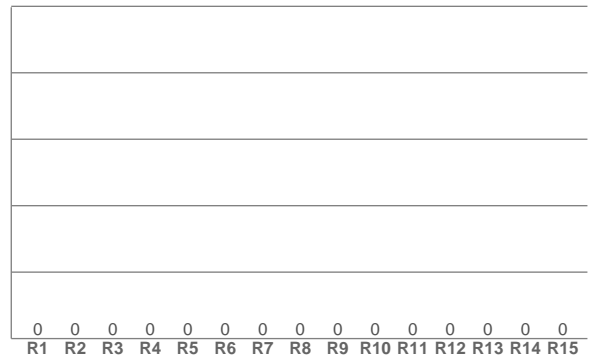
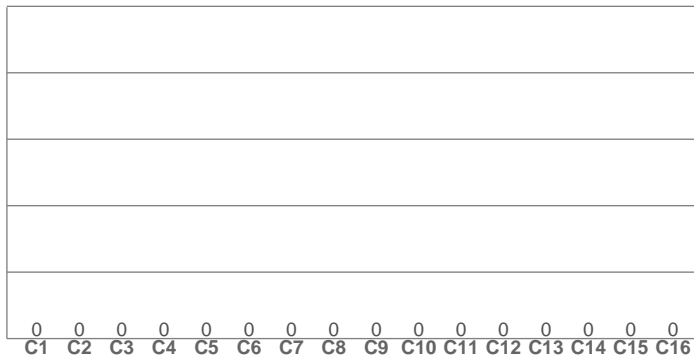
Spectra





TM30: 0.0

CRI: 0.0 (R1-R8)



CRI R values, only R1-R8 are used to calculate final CRI value

R1	R2	R3	R4	R5	R6	R7	R8	R9	R10	R11	R12	R13	R14	R15
0.0	0.0	0.0	0.0	0.0	0.0	0.0	0.0	0.0	0.0	0.0	0.0	0.0	0.0	0.0

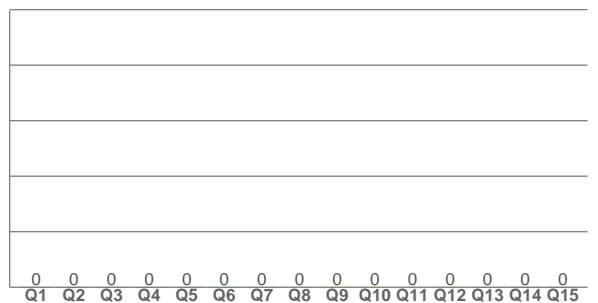
TM30 C values, 16 binned values out of total of 99 C values

C1	C2	C3	C4	C5	C6	C7	C8	C9	C10	C11	C12	C13	C14	C15	C16
0.0	0.0	0.0	0.0	0.0	0.0	0.0	0.0	0.0	0.0	0.0	0.0	0.0	0.0	0.0	0.0

CQS Q values

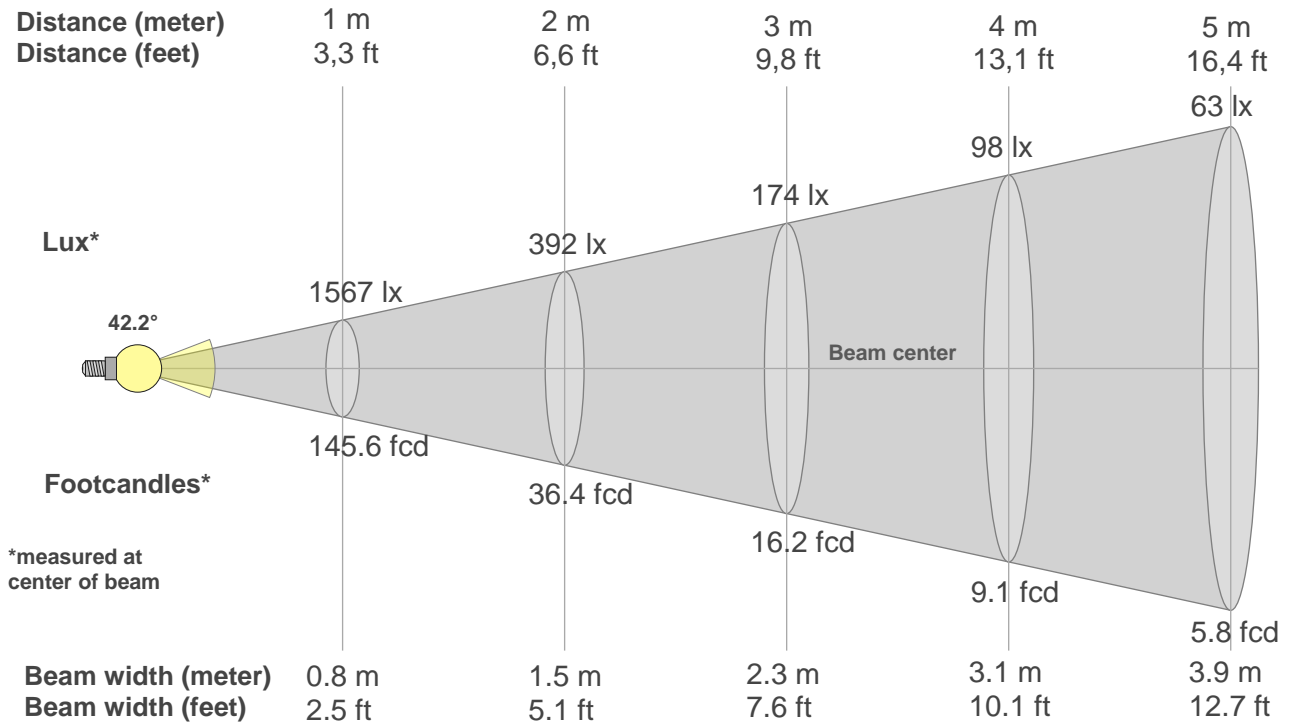
Q1	Q2	Q3	Q4	Q5	Q6	Q7	Q8	Q9	Q10	Q11	Q12	Q13	Q14	Q15
0.0	0.0	0.0	0.0	0.0	0.0	0.0	0.0	0.0	0.0	0.0	0.0	0.0	0.0	0.0

CQS: 0.0



Color parameters

Color temperature	Color rendering index	Red component	Color fidelity	Color gamut	Color quality scale	Color coordinate cie 1931	Color coordinate cie 1931	Color coordinate	Color coordinate	Color deviation from black body
CCT	CRI	CRI R9	TM30 Rf	TM30 Rg	CQS	x	y	u	v	Δuv
0 K	0.0	0.0	0.0	0.0	0.0	0.150	0.030	0.196	0.059	n/a



Beam intensities from 1-20m

1m	2m	3m	4m	5m	6m	7m	8m	9m	10m	11m	12m	13m	14m	15m	16m	17m	18m	19m	20m
3.3ft	6.6ft	9.8ft	13.1ft	16.4ft	19.7ft	23ft	26.2ft	29.5ft	32.8ft	36.1ft	39.4ft	42.7ft	45.9ft	49.2ft	52.5ft	55.8ft	59.1ft	62.3ft	65.6ft
1567lx	392lx	174lx	98lx	63lx	44lx	32lx	24lx	19lx	16lx	13lx	11lx	9lx	8lx	7lx	6lx	5lx	5lx	4lx	4lx
145.6fcd	36.4fcd	16.2fcd	9.1fcd	5.8fcd	4fcd	3fcd	2.3fcd	1.8fcd	1.5fcd	1.2fcd	1fcd	0.9fcd	0.7fcd	0.6fcd	0.6fcd	0.5fcd	0.4fcd	0.4fcd	0.4fcd

Intensities in 0° c-plane

0°	2°	4°	6°	8°	10°	12°	14°	16°	18°	20°	22°	24°	26°	28°	30°	32°	34°	36°	38°
1567	1549	1495	1410	1300	1174	1036	896	755	620	498	393	303	232	178	139	110	89	74	64
100%	99%	95%	90%	83%	75%	66%	57%	48%	40%	32%	25%	19%	15%	11%	9%	7%	6%	5%	4%

Intensities in 90° c-plane

0°	2°	4°	6°	8°	10°	12°	14°	16°	18°	20°	22°	24°	26°	28°	30°	32°	34°	36°	38°
1567	1561	1544	1518	1485	1447	1403	1358	1309	1253	1189	1120	1044	962	874	784	692	604	520	440
100%	100%	99%	97%	95%	92%	90%	87%	84%	80%	76%	71%	67%	61%	56%	50%	44%	39%	33%	28%

Intensities in 180° c-plane

0°	2°	4°	6°	8°	10°	12°	14°	16°	18°	20°	22°	24°	26°	28°	30°	32°	34°	36°	38°
1567	1549	1495	1410	1300	1174	1036	896	755	620	498	393	303	232	178	139	110	89	74	64
100%	99%	95%	90%	83%	75%	66%	57%	48%	40%	32%	25%	19%	15%	11%	9%	7%	6%	5%	4%

Intensities in 270° c-plane

0°	2°	4°	6°	8°	10°	12°	14°	16°	18°	20°	22°	24°	26°	28°	30°	32°	34°	36°	38°
1567	1561	1544	1518	1485	1447	1403	1358	1309	1253	1189	1120	1044	962	874	784	692	604	520	440
100%	100%	99%	97%	95%	92%	90%	87%	84%	80%	76%	71%	67%	61%	56%	50%	44%	39%	33%	28%

Beam angle 50%	Field angle 10%	Cutoff angle 2,5%	Intensity ratio in 120° cone	Intensity ratio in 90° cone
42.2°	74.3°	108.5°	89.8%	83.1%