

Light efficiency:

56 Lumen/Watt

Light quality:

CRI: 73.0

Color temperature:

6600 K

Output: 5578 lm

Peak: 8846 cd

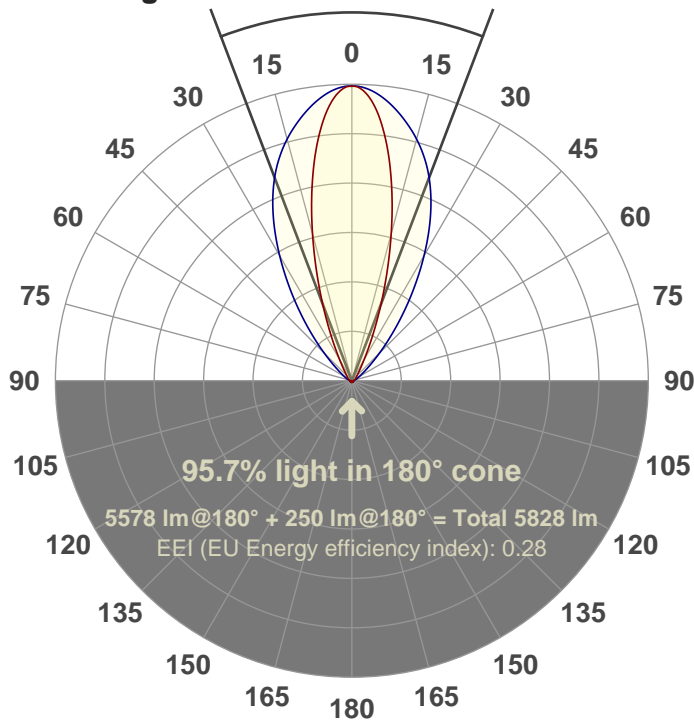
Power: 99.3 W

PF: 1.0



41.6°

Beam angle



Product name:

FL100-CM-RGBW65K-IM-60X30-ELV-SM-WHITE

Date and time:

12-Jun-18 12:56:54 PM

Additional Information:

LED: RGBW

FIXTURE: FL100

FILM: 250235 (60°X30°)

COLOR-AMP: ON

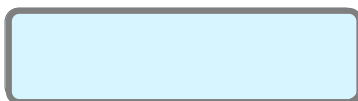
STABILIZED: YES

COLOR (RGBW): WHITE

FWHM: 59.3°X30.7°

PERFORMED BY: ABDULLAH QURESHI

Color

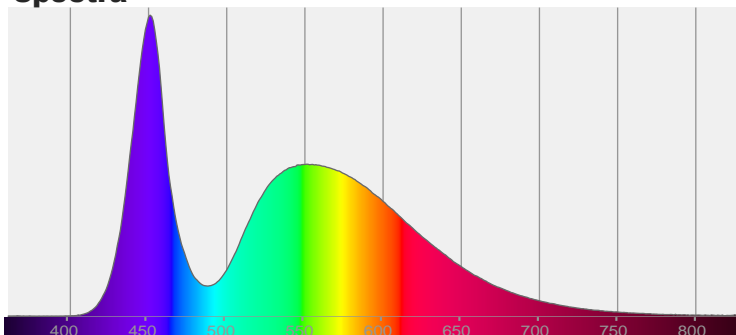


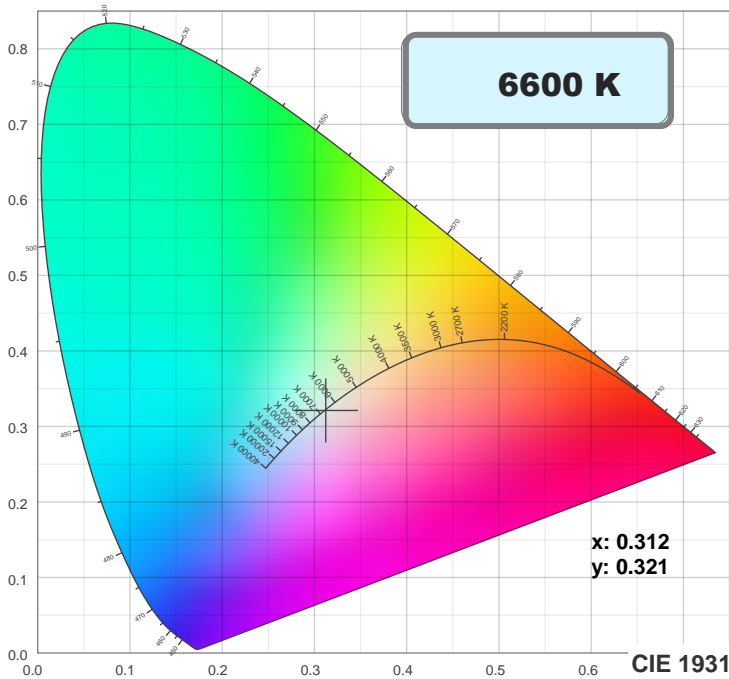
CIE 1931

x: 0.312

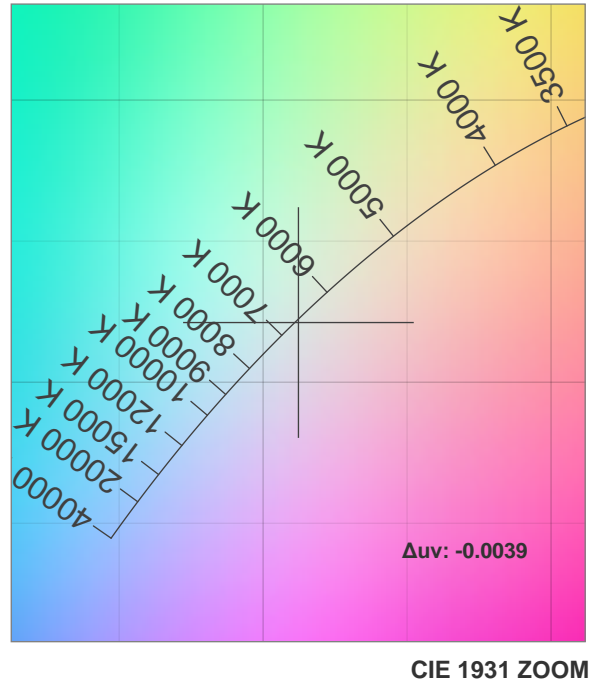
y: 0.321

Spectra

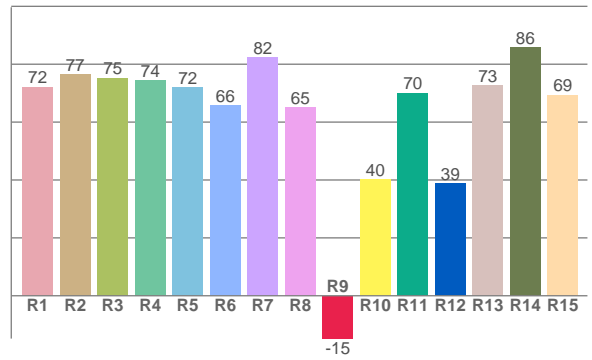
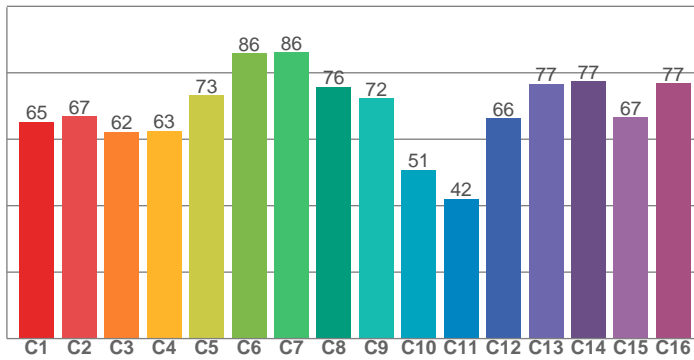




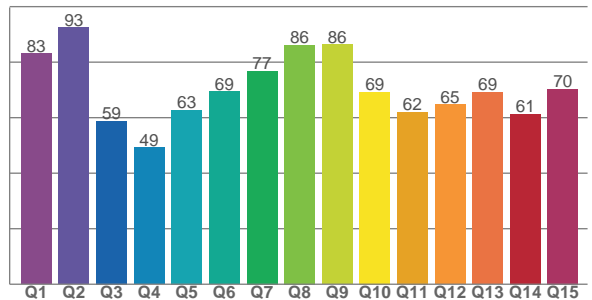
TM30: 68.6



CRI: 73.0 (R1-R8)



CQS: 68.5



CRI R values, only R1-R8 are used to calculate final CRI value

R1	R2	R3	R4	R5	R6	R7	R8	R9	R10	R11	R12	R13	R14	R15
72.2	76.5	75.3	74.5	72.0	65.9	82.2	65.2	-14.8	40.2	70.1	38.8	72.6	85.8	69.4

TM30 C values, 16 binned values out of total of 99 C values

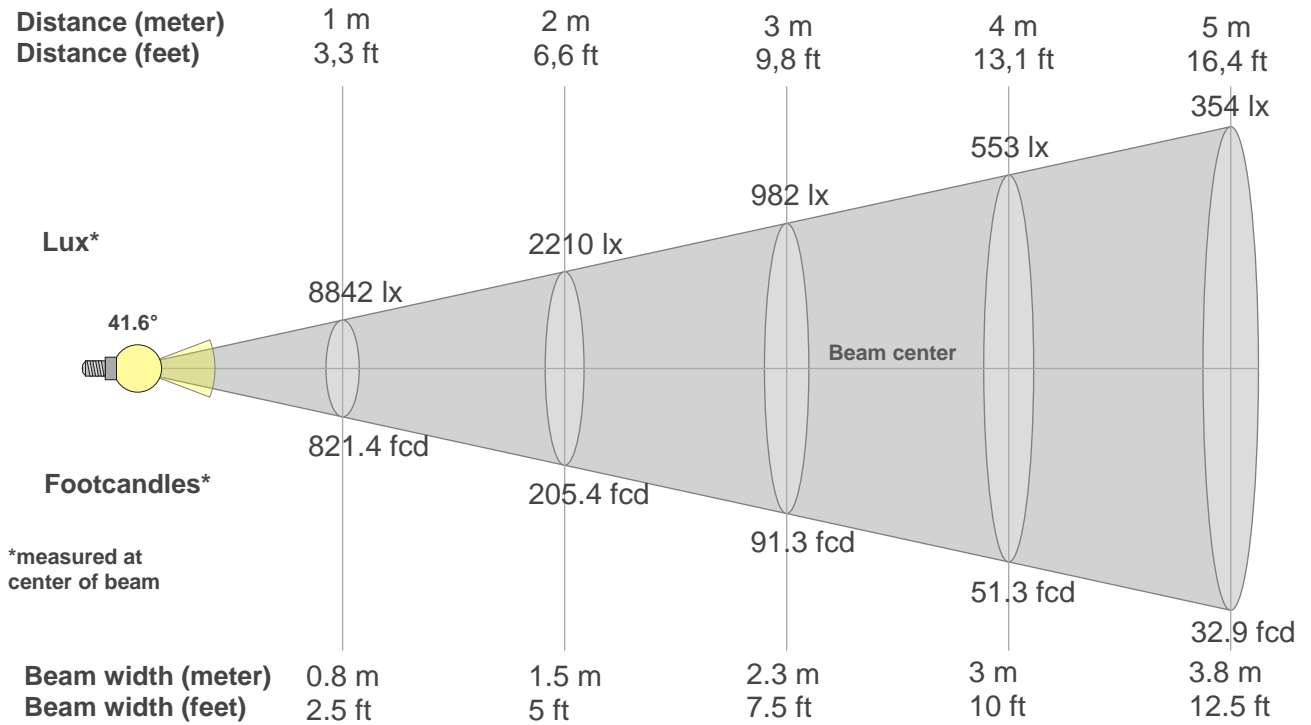
C1	C2	C3	C4	C5	C6	C7	C8	C9	C10	C11	C12	C13	C14	C15	C16
65.2	66.9	62.2	62.6	73.2	85.9	86.2	75.7	72.3	50.8	42.0	66.3	76.7	77.4	66.6	76.8

CQS Q values

Q1	Q2	Q3	Q4	Q5	Q6	Q7	Q8	Q9	Q10	Q11	Q12	Q13	Q14	Q15
83.1	92.5	58.8	49.2	62.7	69.4	76.8	86.1	86.4	69.2	62.0	64.7	69.1	61.3	70.3

Color parameters

Color temperature	Color rendering index	Red component	Color fidelity	Color gamut	Color quality scale	Color coordinate cie 1931	Color coordinate cie 1931	Color coordinate	Color coordinate	Color deviation from black body
CCT	CRI	CRI R9	TM30 Rf	TM30 Rg	CQS	x	y	u	v	Δuv
6600 K	73.0	-14.8	68.6	93.3	68.5	0.312	0.321	0.201	0.309	-0.0039



Beam intensities from 1-20m

1m	2m	3m	4m	5m	6m	7m	8m	9m	10m	11m	12m	13m	14m	15m	16m	17m	18m	19m	20m
3.3ft	6.6ft	9.8ft	13.1ft	16.4ft	19.7ft	23ft	26.2ft	29.5ft	32.8ft	36.1ft	39.4ft	42.7ft	45.9ft	49.2ft	52.5ft	55.8ft	59.1ft	62.3ft	65.6ft
8842lx	2210lx	982lx	553lx	354lx	246lx	180lx	138lx	109lx	88lx	73lx	61lx	52lx	45lx	39lx	35lx	31lx	27lx	24lx	22lx
821.4fcd	205.4fcd	91.3fcd	51.3fcd	32.9fcd	22.8fcd	16.8fcd	12.8fcd	10.1fcd	8.2fcd	6.8fcd	5.7fcd	4.9fcd	4.2fcd	3.7fcd	3.2fcd	2.8fcd	2.5fcd	2.3fcd	2.1fcd

Intensities in 0° c-plane

0°	2°	4°	6°	8°	10°	12°	14°	16°	18°	20°	22°	24°	26°	28°	30°	32°	34°	36°	38°
8842	8737	8423	7932	7300	6568	5777	4965	4162	3408	2722	2127	1636	1251	958	743	591	483	404	345
100%	99%	95%	90%	83%	74%	65%	56%	47%	39%	31%	24%	19%	14%	11%	8%	7%	5%	5%	4%

Intensities in 90° c-plane

0°	2°	4°	6°	8°	10°	12°	14°	16°	18°	20°	22°	24°	26°	28°	30°	32°	34°	36°	38°
8842	8814	8717	8566	8376	8152	7907	7646	7357	7036	6679	6278	5835	5356	4850	4331	3814	3310	2830	2382
100%	100%	99%	97%	95%	92%	89%	86%	83%	80%	76%	71%	66%	61%	55%	49%	43%	37%	32%	27%

Intensities in 180° c-plane

0°	2°	4°	6°	8°	10°	12°	14°	16°	18°	20°	22°	24°	26°	28°	30°	32°	34°	36°	38°
8842	8737	8423	7932	7300	6568	5777	4965	4162	3408	2722	2127	1636	1251	958	743	591	483	404	345
100%	99%	95%	90%	83%	74%	65%	56%	47%	39%	31%	24%	19%	14%	11%	8%	7%	5%	5%	4%

Intensities in 270° c-plane

0°	2°	4°	6°	8°	10°	12°	14°	16°	18°	20°	22°	24°	26°	28°	30°	32°	34°	36°	38°
8842	8814	8717	8566	8376	8152	7907	7646	7357	7036	6679	6278	5835	5356	4850	4331	3814	3310	2830	2382
100%	100%	99%	97%	95%	92%	89%	86%	83%	80%	76%	71%	66%	61%	55%	49%	43%	37%	32%	27%

Beam angle 50%	Field angle 10%	Cutoff angle 2,5%	Intensity ratio in 120° cone	Intensity ratio in 90° cone
41.6°	73.3°	106.5°	90.6%	84.1%