

Light efficiency:



Light quality:



Color temperature:



Output: 5490 lm

Peak: 3333 cd

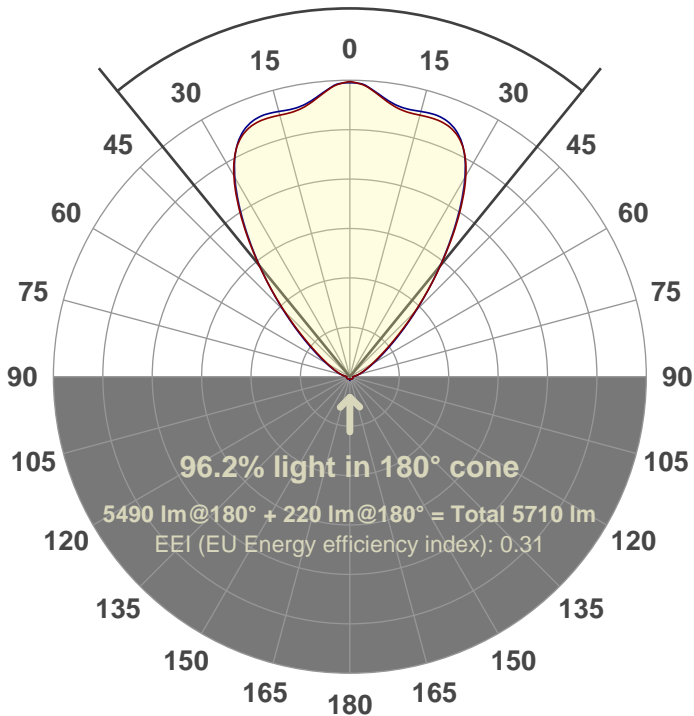
Power: 99.3 W

PF: 1.0



78.3°

Beam angle



Product name:

FL100-CM-RGBW65K-IM-80-ELV-SM-WHITE

Date and time:

12-Jun-18 11:35:03 AM

Additional Information:

LED: RGBW

FIXTURE: FL100

FILM: 250245 (80°)

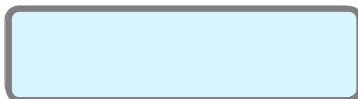
COLOR-AMP: ON

STABILIZED: YES

COLOR (RGBW): WHITE

PERFORMED BY: ABDULLAH QURESHI

Color

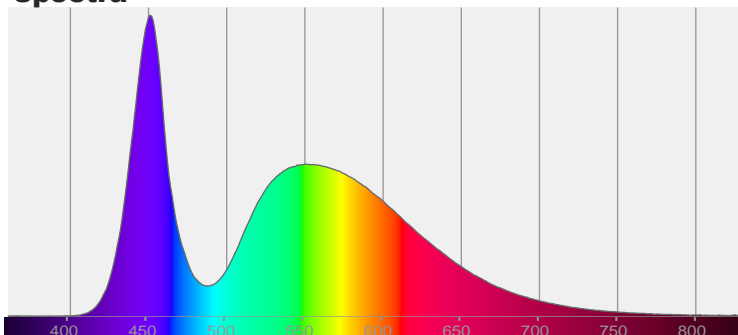


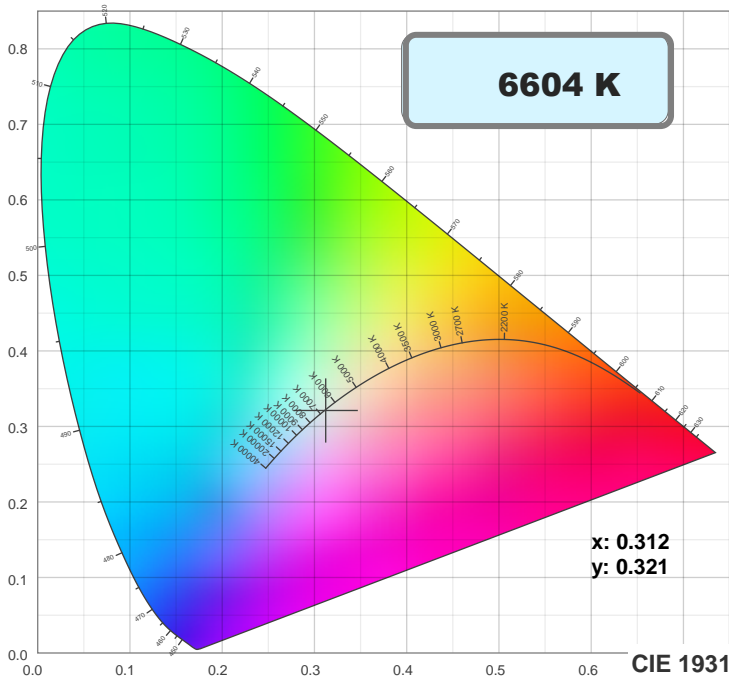
CIE 1931

x: 0.312

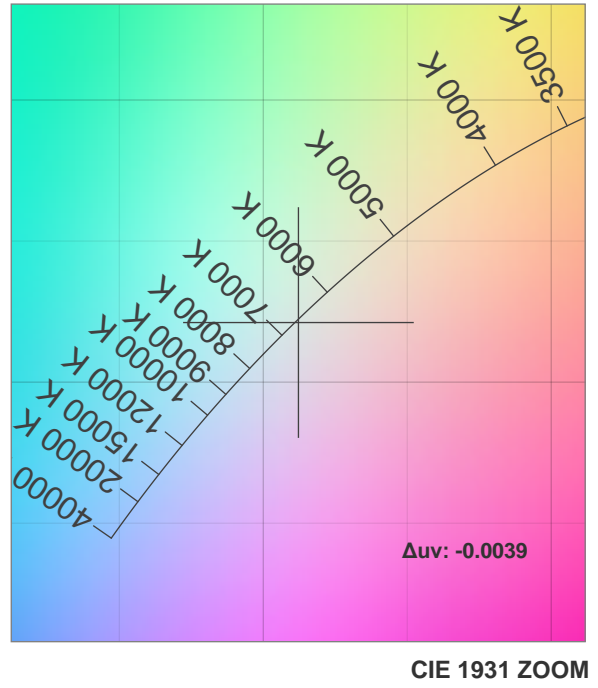
y: 0.321

Spectra

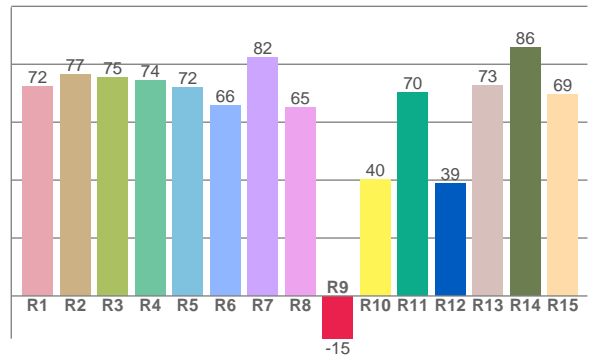
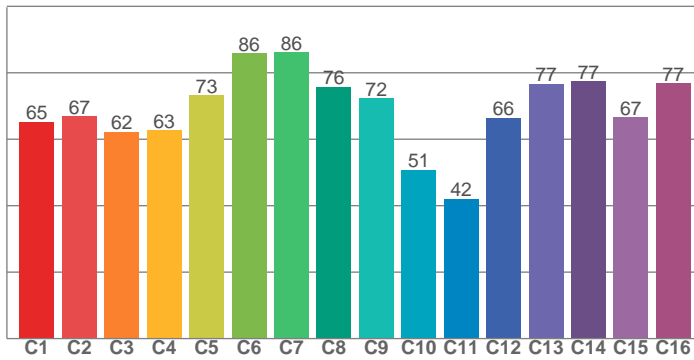




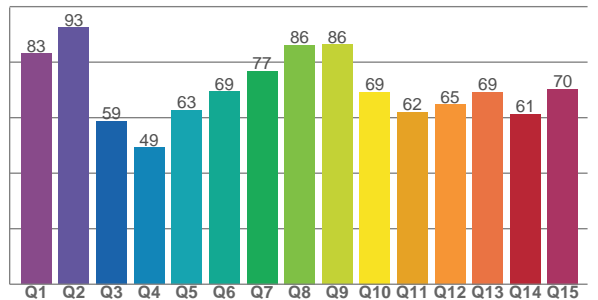
TM30: 68.6



CRI: 73.0 (R1-R8)



CQS: 68.6



CRI R values, only R1-R8 are used to calculate final CRI value

R1	R2	R3	R4	R5	R6	R7	R8	R9	R10	R11	R12	R13	R14	R15
72.2	76.5	75.3	74.5	72.1	65.9	82.3	65.2	-14.7	40.2	70.1	38.9	72.6	85.8	69.4

TM30 C values, 16 binned values out of total of 99 C values

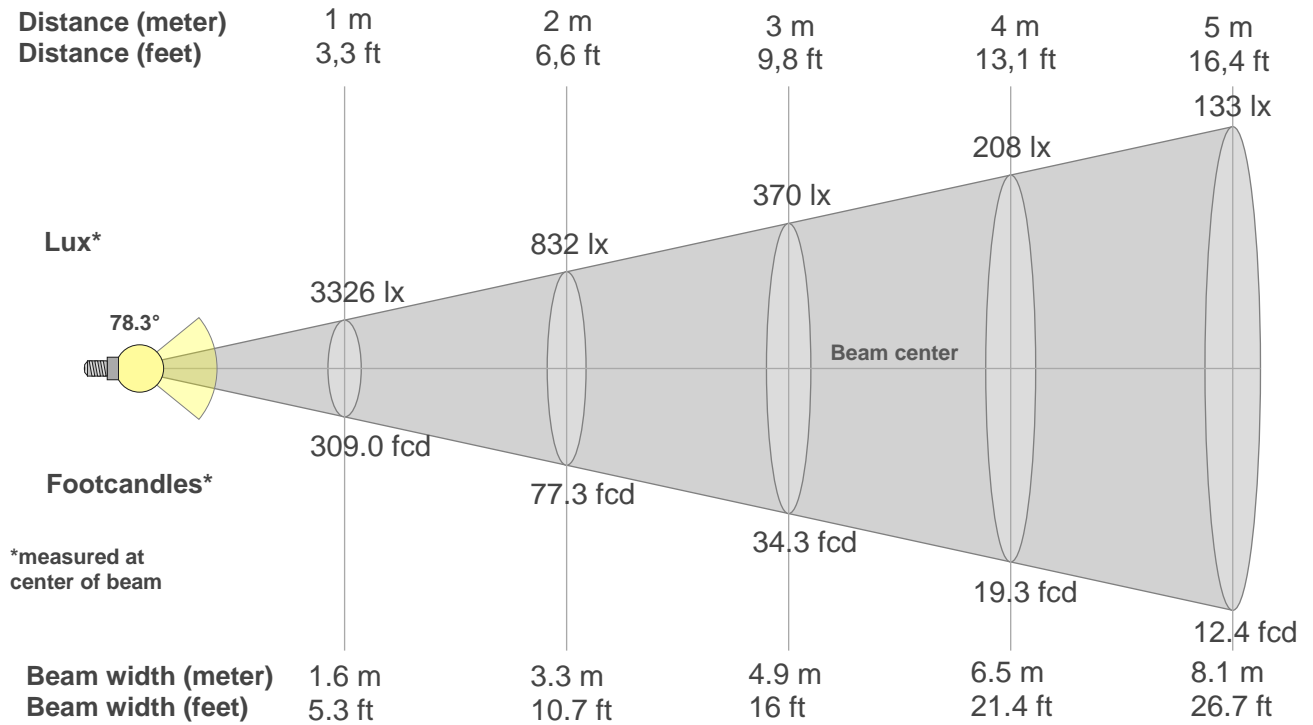
C1	C2	C3	C4	C5	C6	C7	C8	C9	C10	C11	C12	C13	C14	C15	C16
65.3	66.9	62.2	62.6	73.3	85.9	86.2	75.7	72.3	50.9	42.0	66.3	76.7	77.4	66.6	76.8

CQS Q values

Q1	Q2	Q3	Q4	Q5	Q6	Q7	Q8	Q9	Q10	Q11	Q12	Q13	Q14	Q15
83.1	92.5	58.8	49.2	62.8	69.5	76.8	86.1	86.4	69.2	62.1	64.7	69.2	61.3	70.4

Color parameters

Color temperature	Color rendering index	Red component	Color fidelity	Color gamut	Color quality scale	Color coordinate cie 1931	Color coordinate cie 1931	Color coordinate	Color coordinate	Color deviation from black body
CCT	CRI	CRI R9	TM30 Rf	TM30 Rg	CQS	x	y	u	v	Δuv
6604 K	73.0	-14.7	68.6	93.3	68.6	0.312	0.321	0.200	0.309	-0.0039



Beam intensities from 1-20m

1m	2m	3m	4m	5m	6m	7m	8m	9m	10m	11m	12m	13m	14m	15m	16m	17m	18m	19m	20m
3.3ft	6.6ft	9.8ft	13.1ft	16.4ft	19.7ft	23ft	26.2ft	29.5ft	32.8ft	36.1ft	39.4ft	42.7ft	45.9ft	49.2ft	52.5ft	55.8ft	59.1ft	62.3ft	65.6ft
3326lx	832lx	370lx	208lx	133lx	92lx	68lx	52lx	41lx	33lx	27lx	23lx	20lx	17lx	15lx	13lx	12lx	10lx	9lx	8lx
309fcd	77.3fcd	34.3fcd	19.3fcd	12.4fcd	8.6fcd	6.3fcd	4.8fcd	3.8fcd	3.1fcd	2.6fcd	2.1fcd	1.8fcd	1.6fcd	1.4fcd	1.2fcd	1.1fcd	1fcd	0.9fcd	0.8fcd

Intensities in 0° c-plane

0°	5°	10°	15°	20°	25°	30°	35°	40°	45°	50°	55°	60°	65°	70°	75°	80°	85°	90°	95°
3326	3228	3085	3060	3057	2943	2615	2093	1535	1044	672	431	289	203	146	104	71	46	36	0
100%	97%	93%	92%	92%	88%	79%	63%	46%	31%	20%	13%	9%	6%	4%	3%	2%	1%	1%	0%

Intensities in 90° c-plane

0°	5°	10°	15°	20°	25°	30°	35°	40°	45°	50°	55°	60°	65°	70°	75°	80°	85°	90°	95°
3326	3237	3113	3103	3098	2956	2596	2067	1524	1062	709	468	314	217	153	107	72	47	35	0
100%	97%	94%	93%	93%	89%	78%	62%	46%	32%	21%	14%	9%	7%	5%	3%	2%	1%	1%	0%

Intensities in 180° c-plane

0°	5°	10°	15°	20°	25°	30°	35°	40°	45°	50°	55°	60°	65°	70°	75°	80°	85°	90°	95°
3326	3228	3085	3060	3057	2943	2615	2093	1535	1044	672	431	289	203	146	104	71	46	36	0
100%	97%	93%	92%	92%	88%	79%	63%	46%	31%	20%	13%	9%	6%	4%	3%	2%	1%	1%	0%

Intensities in 270° c-plane

0°	5°	10°	15°	20°	25°	30°	35°	40°	45°	50°	55°	60°	65°	70°	75°	80°	85°	90°	95°
3326	3237	3113	3103	3098	2956	2596	2067	1524	1062	709	468	314	217	153	107	72	47	35	0
100%	97%	94%	93%	93%	89%	78%	62%	46%	32%	21%	14%	9%	7%	5%	3%	2%	1%	1%	0%

Beam angle 50%	Field angle 10%	Cutoff angle 2,5%	Intensity ratio in 120° cone	Intensity ratio in 90° cone
78.3°	117.8°	156.5°	89.5%	75.8%