



Light efficiency:

48 Lumen/Watt

Light quality:

CRI: 70.9

Color temperature:

6343 K

Output: 4658 lm
Peak: 111880 cd

Power: 97.3 W
48.0V @ 2.03A



Product name:

FL100-RGBW-IM-WHITE-10-ELV48-22.00

Date and time:

22-Sep-16 5:23:43 PM

Additional information:

FILM: 250218

COLORAMP ON

FULL POWER

NORMALIZED: YES

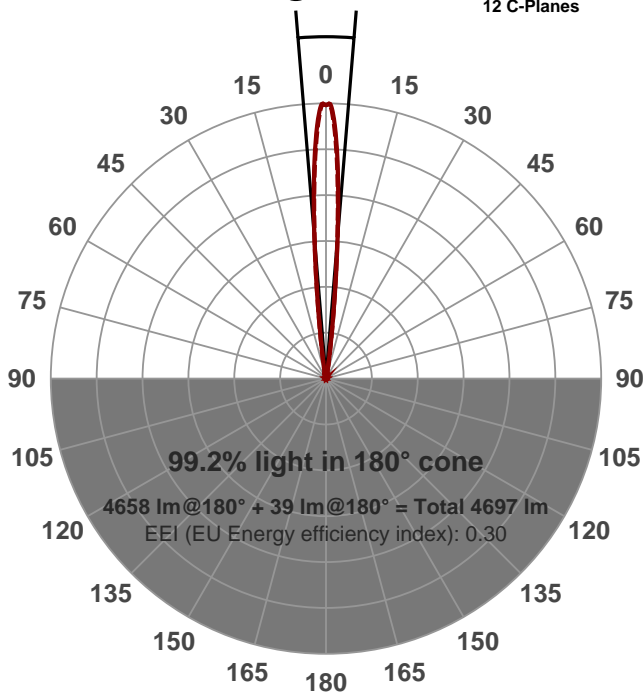
DETAILED SCAN

PERFORMED BY: NABIUL

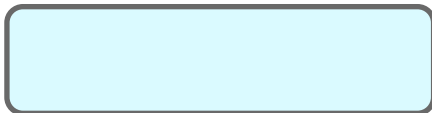
Beam angle

9.4°

(6 PLANES)
12 C-Planes

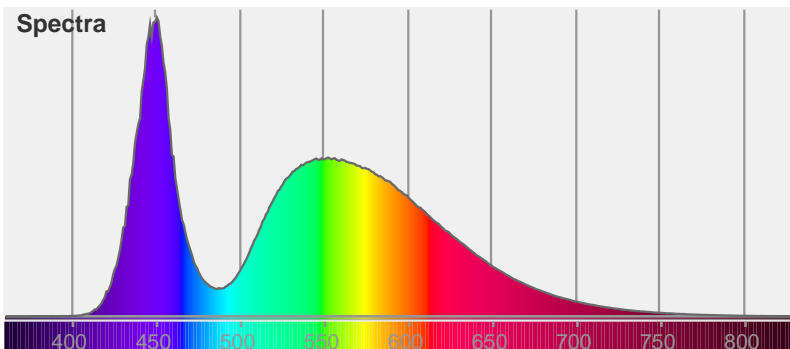


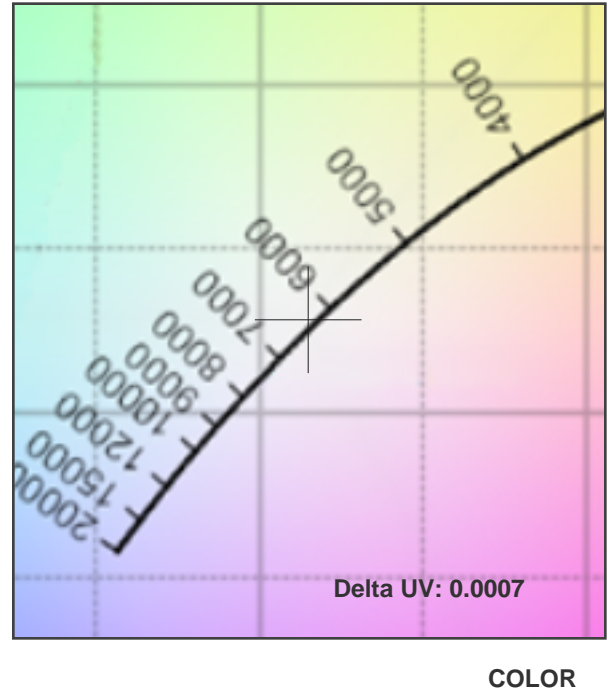
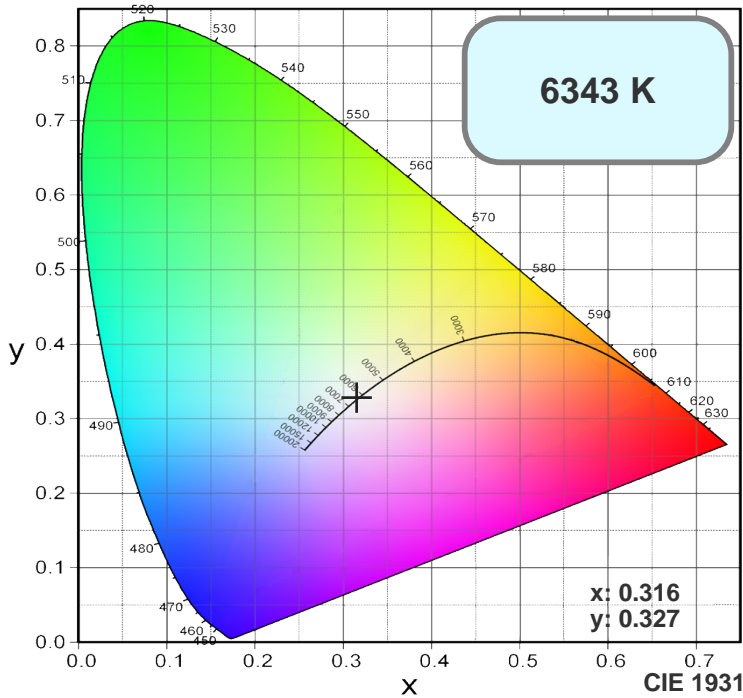
Color



CIE1931
x: 0.316
y: 0.327

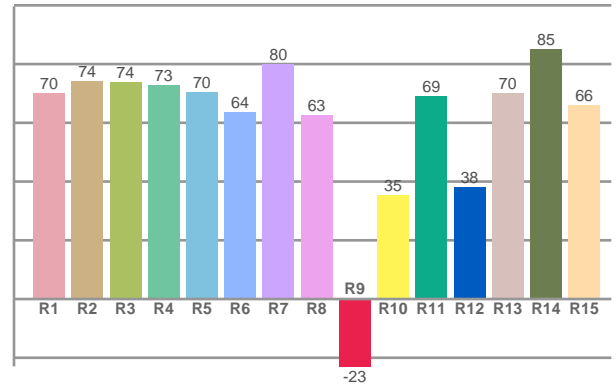
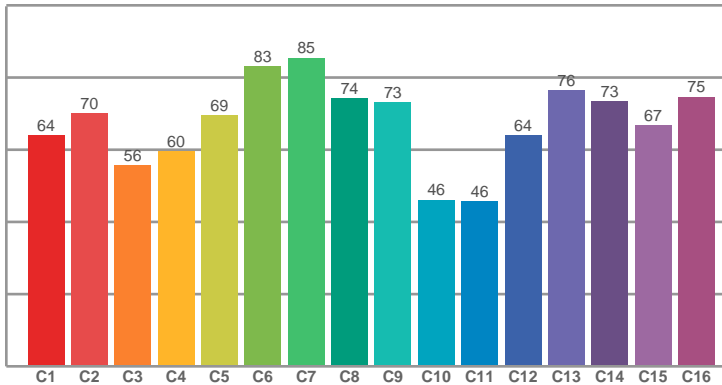
Spectra





TM30: 67.0

CRI: 70.9 (R1-R8)



CRI R values, only R1-R8 are used to calculate final CRI value

R1	R2	R3	R4	R5	R6	R7	R8	R9	R10	R11	R12	R13	R14	R15
69.90	74.07	73.69	72.77	70.26	63.64	79.99	62.57	-22.91	35.38	69.08	37.92	69.90	84.88	66.00

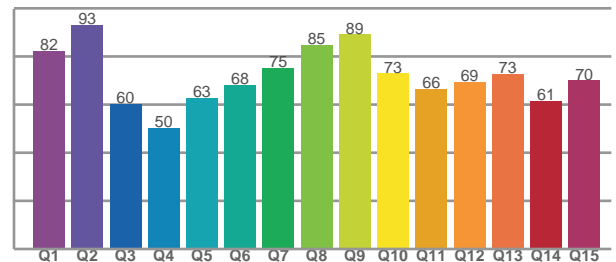
TM30 C values, 16 binned values out of total of 99 C values

C1	C2	C3	C4	C5	C6	C7	C8	C9	C10	C11	C12	C13	C14	C15	C16
63.95	70.10	55.60	59.56	69.49	83.10	85.43	74.15	73.10	46.07	45.74	64.04	76.44	73.36	66.80	74.64

CQS Q values

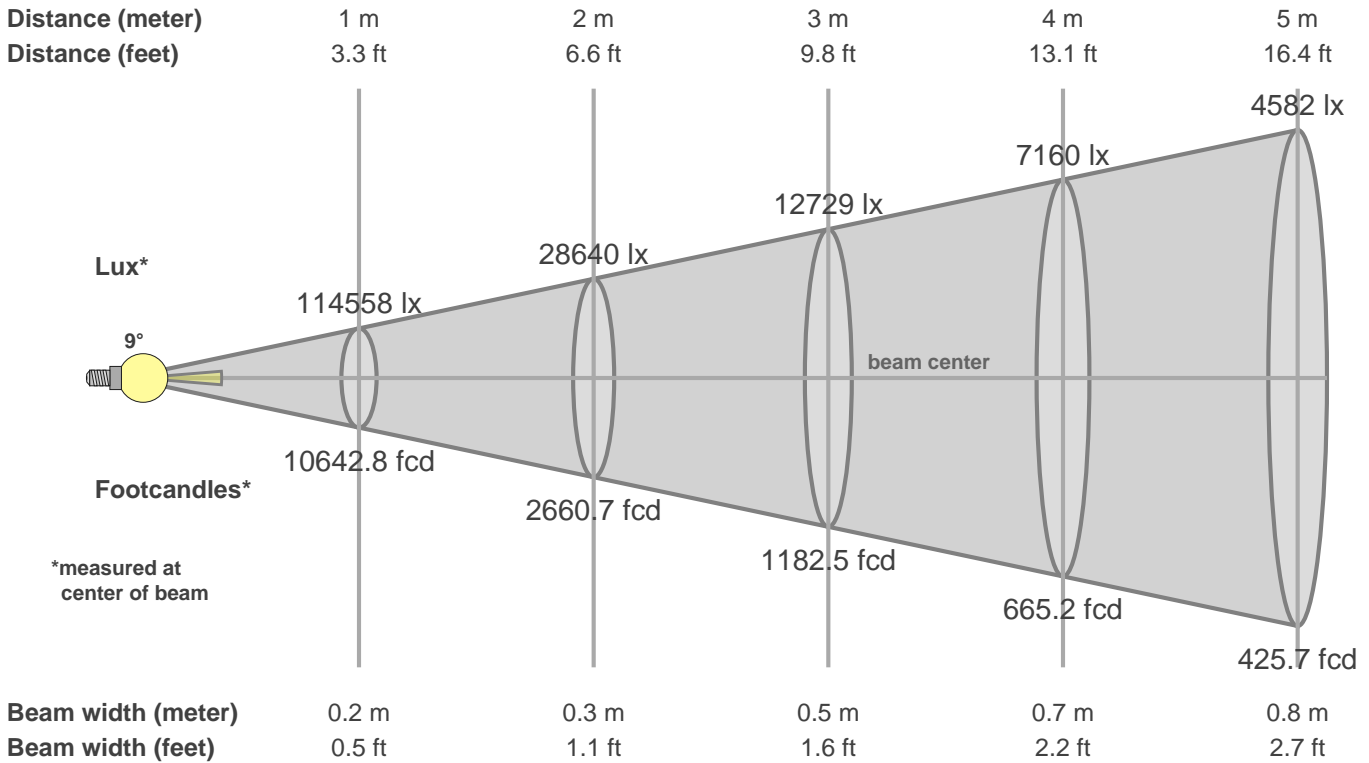
Q1	Q2	Q3	Q4	Q5	Q6	Q7	Q8	Q9	Q10	Q11	Q12	Q13	Q14	Q15
82.25	93.02	60.08	50.25	62.67	68.14	75.01	84.53	88.96	72.72	66.41	69.36	72.65	61.24	69.88

CQS: 69.7



Color parameters

CCT	CRI	CRI R9	TM30 Rf	TM30 Rg	CQS	x	y	u	v	Duv
6343 K	70.9	-22.9	67.0	94.0	69.7	0.3	0.3	0.2	0.3	0.0025



Intensities in 0° c-plane

0°	1°	2°	3°	4°	5°	6°	7°	8°	9°	10°	11°	12°	13°	14°	15°	16°	17°	18°	19°
115K	112K	104K	90K	72K	52K	34K	21K	12K	7K	5K	3K	3K	2K	2K	2K	2K	2K	2K	2K
100%	98%	90%	78%	63%	46%	30%	18%	11%	7%	4%	3%	2%	2%	2%	2%	2%	2%	2%	2%

Intensities in 90° c-plane

0°	1°	2°	3°	4°	5°	6°	7°	8°	9°	10°	11°	12°	13°	14°	15°	16°	17°	18°	19°
115K	111K	102K	87K	69K	51K	34K	21K	13K	8K	5K	4K	3K	3K	2K	2K	2K	2K	2K	2K
100%	97%	89%	76%	61%	44%	30%	19%	12%	7%	5%	3%	3%	2%	2%	2%	2%	2%	2%	2%

Intensities in 180° c-plane

0°	1°	2°	3°	4°	5°	6°	7°	8°	9°	10°	11°	12°	13°	14°	15°	16°	17°	18°	19°
115K	112K	104K	90K	72K	52K	34K	21K	12K	7K	5K	3K	3K	2K	2K	2K	2K	2K	2K	2K
100%	98%	90%	78%	63%	46%	30%	18%	11%	7%	4%	3%	2%	2%	2%	2%	2%	2%	2%	2%

Intensities in 270° c-plane

0°	1°	2°	3°	4°	5°	6°	7°	8°	9°	10°	11°	12°	13°	14°	15°	16°	17°	18°	19°
115K	111K	102K	87K	69K	51K	34K	21K	13K	8K	5K	4K	3K	3K	2K	2K	2K	2K	2K	2K
100%	97%	89%	76%	61%	44%	30%	19%	12%	7%	5%	3%	3%	2%	2%	2%	2%	2%	2%	2%

Beam angle 50%	Field angle 10%	Cutoff angle 2.5%	Intensity ratio in 120° cone	Intensity ratio in 90° cone
9.4°	16.6°	24.2°	97.3%	94.8%