



Light efficiency:

64 Lumen/Watt

Light quality:

CRI: 82.1

Color temperature:

3968 K

Output: 2243 lm
Peak: 181046 cd

Power: 34.9 W
48.2V @ 0.724A



Product name:

PH-FL100-RGBW-OM-WHITE-4-ELV-12.0

Date and time:

7/12/2016 4:18:11 PM

Additional information:

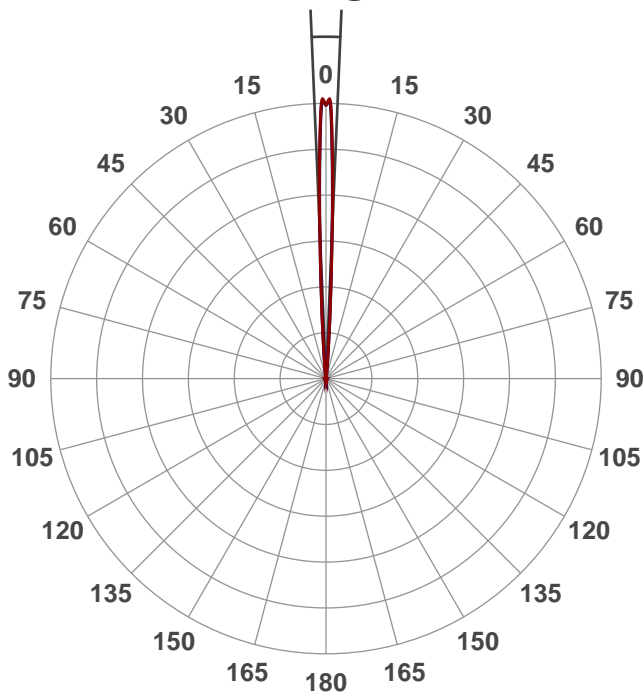
Beam Angle: 4.8°

10% beam angle: 9.1°

Beam angle

4.8°

6 PLANES

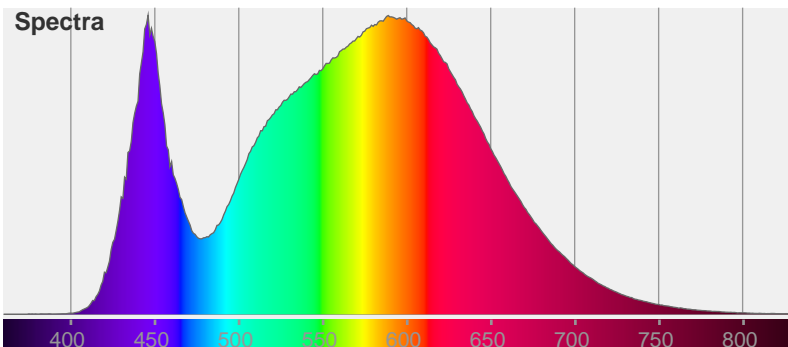


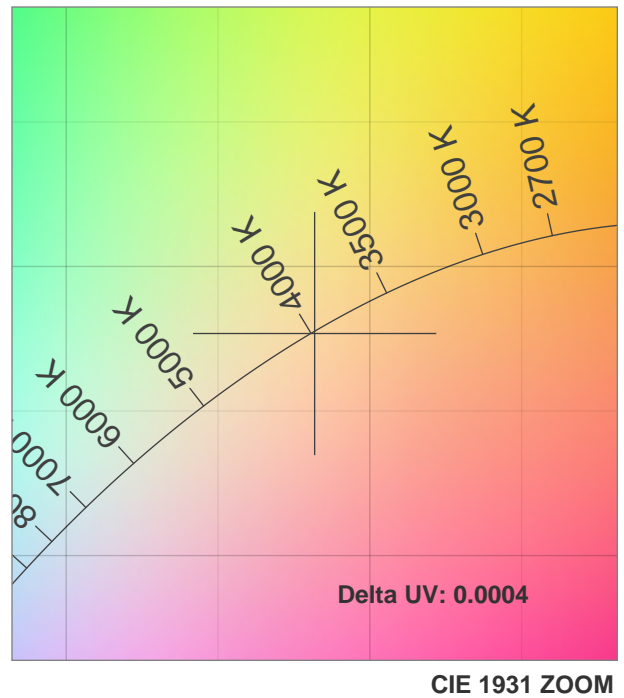
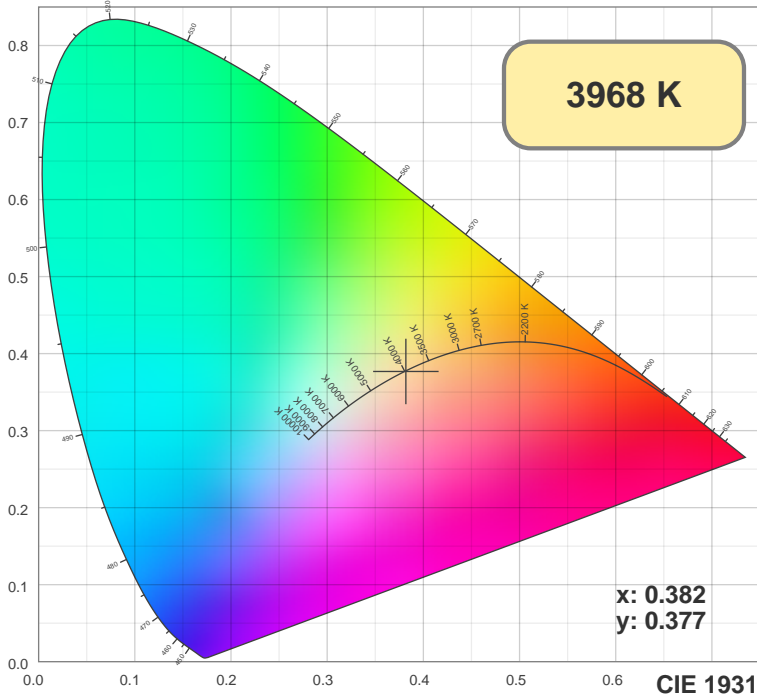
Color



CIE1931
x: 0.382
y: 0.377

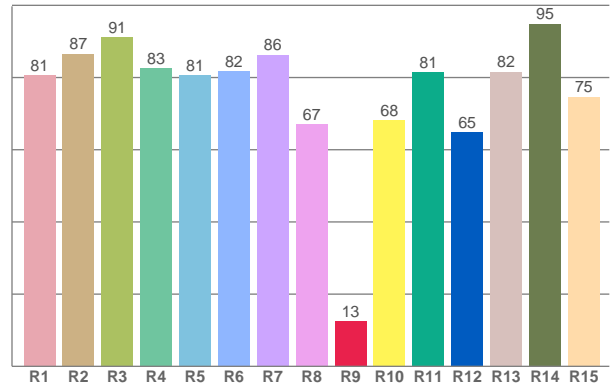
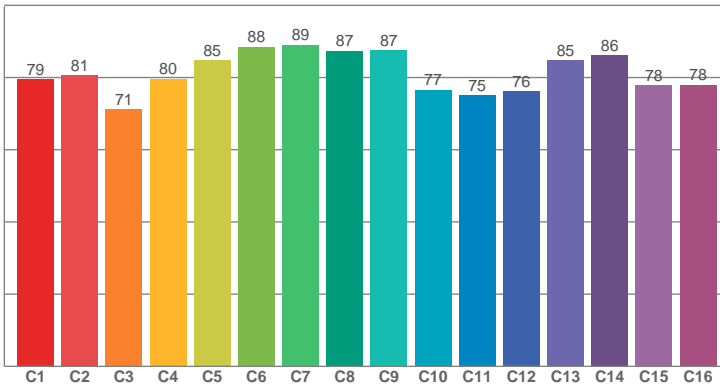
Spectra





TM30: 81.1

CRI: 82.1 (R1-R8)



CRI R values, only R1-R8 are used to calculate final CRI value

R1	R2	R3	R4	R5	R6	R7	R8	R9	R10	R11	R12	R13	R14	R15
80.61	86.52	91.17	82.57	80.65	81.69	86.28	67.03	12.53	68.10	81.46	64.84	81.60	94.88	74.68

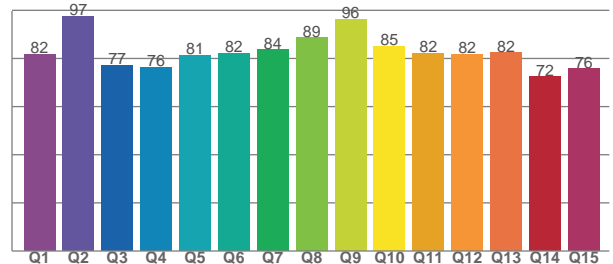
TM30 C values, 16 binned values out of total of 99 C values

C1	C2	C3	C4	C5	C6	C7	C8	C9	C10	C11	C12	C13	C14	C15	C16
79.48	80.58	71.10	79.62	84.71	88.50	89.03	87.42	87.48	76.54	75.11	76.24	84.84	86.11	77.85	77.94

CQS Q values

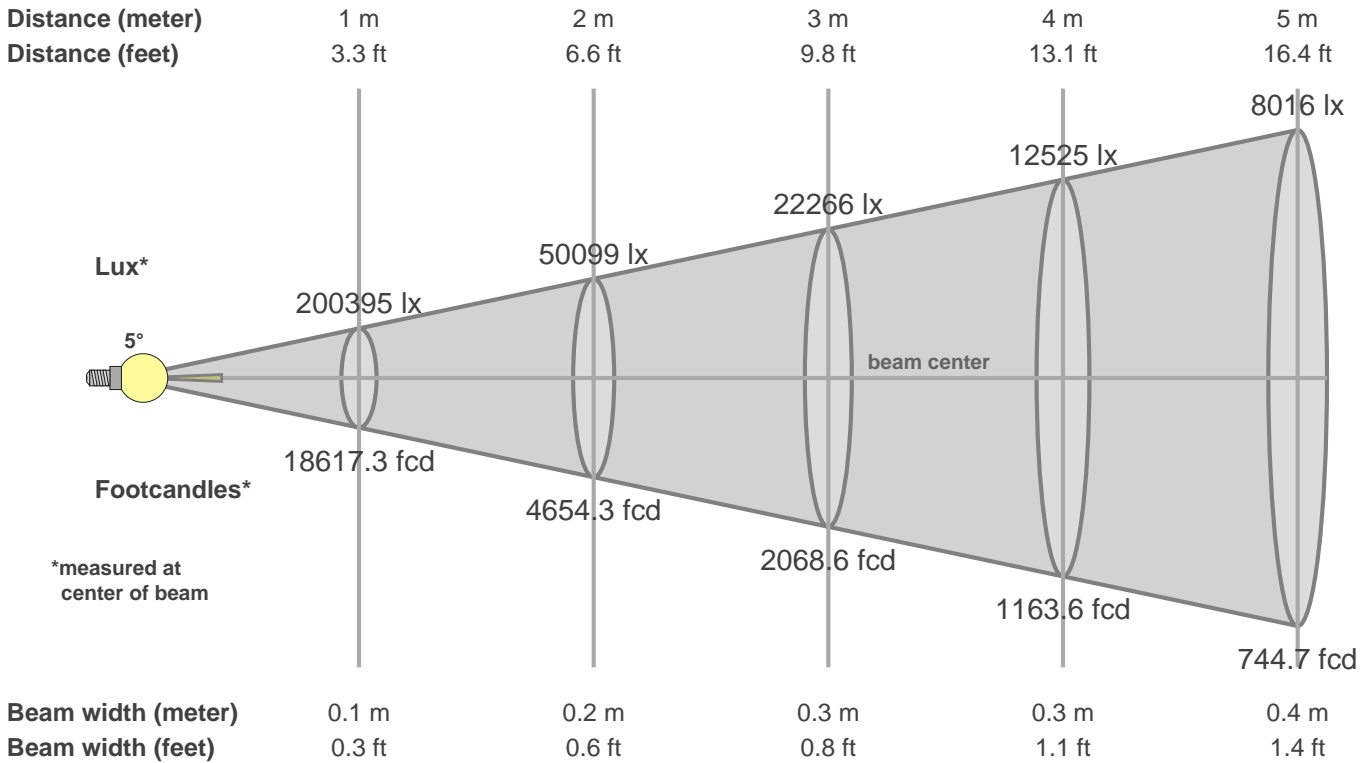
Q1	Q2	Q3	Q4	Q5	Q6	Q7	Q8	Q9	Q10	Q11	Q12	Q13	Q14	Q15
81.59	97.43	77.29	76.20	81.40	82.17	83.53	88.57	96.20	84.99	82.24	81.77	82.36	72.37	75.67

CQS: 81.7



Color parameters

CCT	CRI	CRI R9	TM30 Rf	TM30 Rg	CQS	x	y	u	v	Duv
3968 K	82.1	12.5	81.1	98.0	81.7	0.4	0.4	0.2	0.3	0.0004



Intensities in 0° c-plane

0°	1°	2°	3°	4°	5°	6°	7°	8°	9°	10°	11°	12°	13°	14°	15°	16°	17°	18°	19°
200K	181K	127K	64K	28K	13K	7K	4K	3K	2K	2K	1K	1K	1K	1K	1K	1K	1K	1K	1K
100%	90%	63%	32%	14%	7%	4%	2%	1%	1%	1%	1%	1%	1%	0%	0%	0%	0%	0%	0%

Intensities in 90° c-plane

0°	1°	2°	3°	4°	5°	6°	7°	8°	9°	10°	11°	12°	13°	14°	15°	16°	17°	18°	19°
200K	179K	123K	62K	28K	13K	7K	5K	3K	2K	2K	1K	1K	1K	1K	1K	1K	1K	1K	0K
100%	89%	61%	31%	14%	7%	4%	2%	2%	1%	1%	1%	1%	0%	0%	0%	0%	0%	0%	0%

Intensities in 180° c-plane

0°	1°	2°	3°	4°	5°	6°	7°	8°	9°	10°	11°	12°	13°	14°	15°	16°	17°	18°	19°
200K	181K	127K	64K	28K	13K	7K	4K	3K	2K	2K	1K	1K	1K	1K	1K	1K	1K	1K	1K
100%	90%	63%	32%	14%	7%	4%	2%	1%	1%	1%	1%	1%	1%	0%	0%	0%	0%	0%	0%

Intensities in 270° c-plane

0°	1°	2°	3°	4°	5°	6°	7°	8°	9°	10°	11°	12°	13°	14°	15°	16°	17°	18°	19°
200K	179K	123K	62K	28K	13K	7K	5K	3K	2K	2K	1K	1K	1K	1K	1K	1K	1K	1K	0K
100%	89%	61%	31%	14%	7%	4%	2%	2%	1%	1%	1%	1%	0%	0%	0%	0%	0%	0%	0%

Beam angle 50%	Field angle 10%	Cutoff angle 2.5%	Intensity ratio in 120° cone	Intensity ratio in 90° cone
4.8°	9.1°	13.6°	98.4%	97.4%