



Light efficiency:



Light quality:



Color temperature:



Output: 2597 lm

Peak: 4063 cd

Power: 32.6 W

48.0V @ 0.680A



Product name:

PH-FL100-RGBW40K-OM-WHITE-40-ELV

Date and time:

3/21/2017 4:35:55 PM

Additional information:

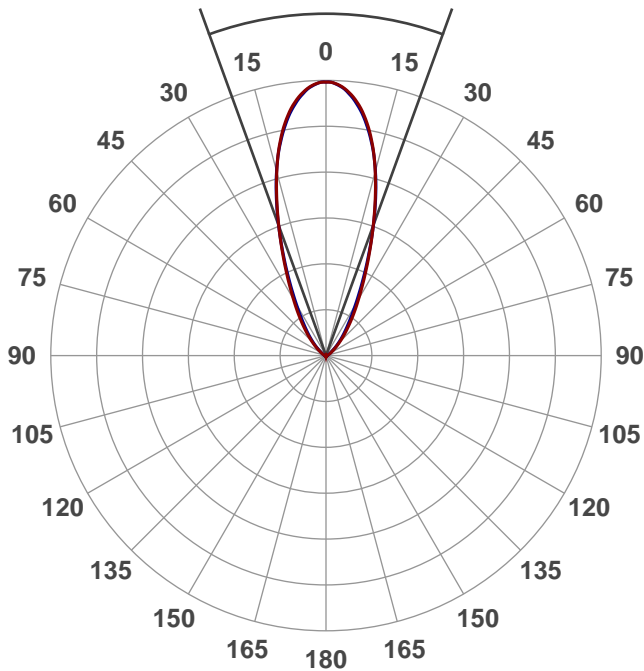
BEAM ANGLE: 40°

10% Beam Angle: 80°

Beam angle

39.9°

6 PLANES



Color

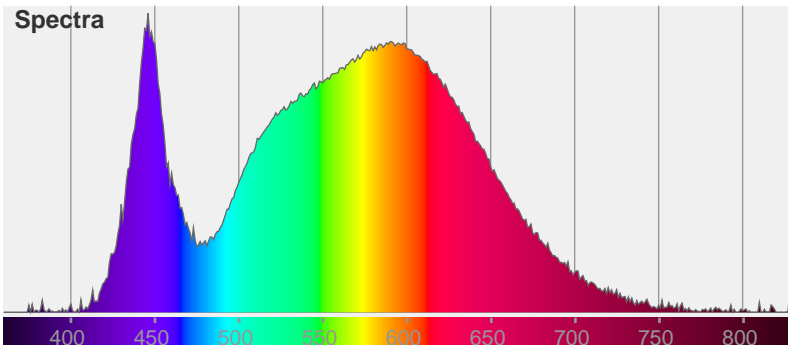


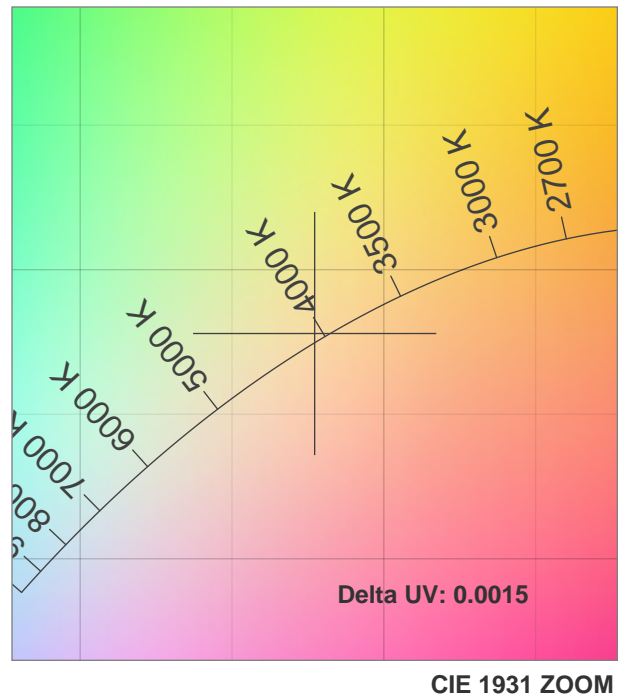
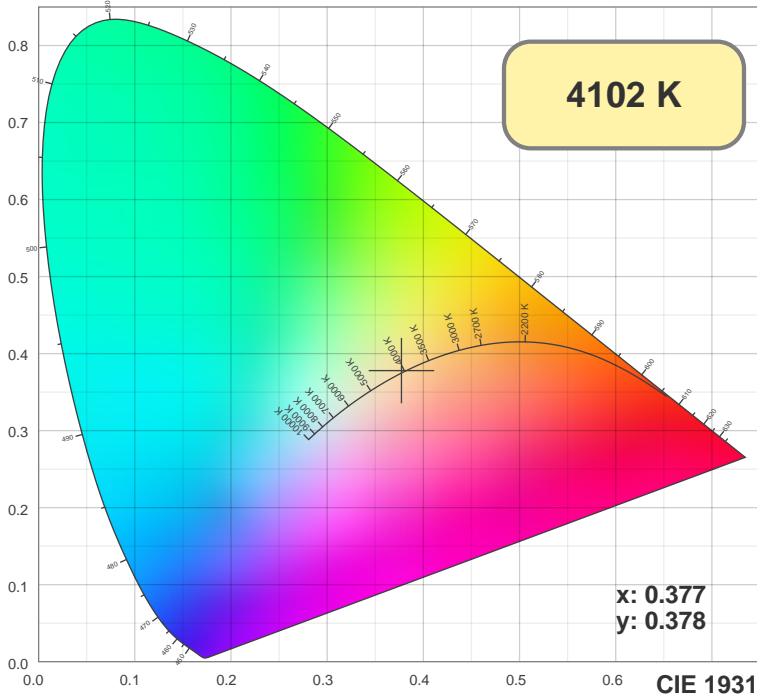
CIE1931

x: 0.377

y: 0.378

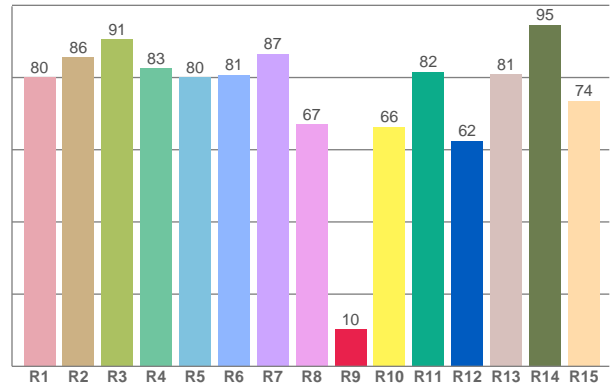
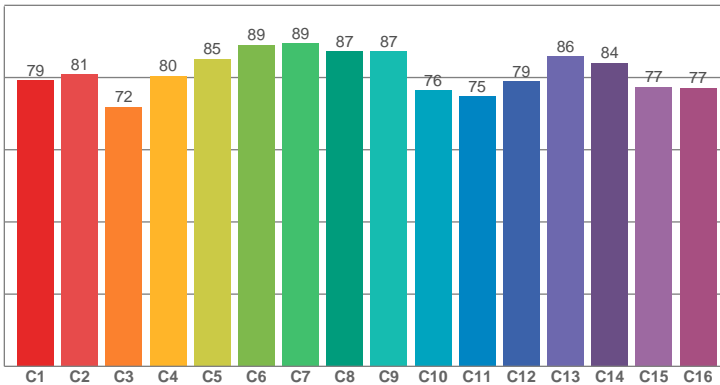
Spectra





TM30: 81.2

CRI: 81.6 (R1-R8)



CRI R values, only R1-R8 are used to calculate final CRI value

R1	R2	R3	R4	R5	R6	R7	R8	R9	R10	R11	R12	R13	R14	R15
79.97	85.64	90.50	82.55	80.04	80.71	86.60	67.05	10.31	66.34	81.60	62.49	80.86	94.57	73.59

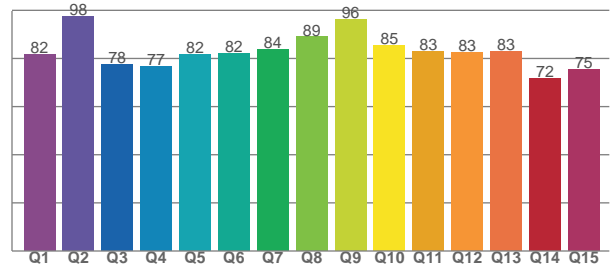
TM30 C values, 16 binned values out of total of 99 C values

C1	C2	C3	C4	C5	C6	C7	C8	C9	C10	C11	C12	C13	C14	C15	C16
79.16	80.90	71.84	80.45	85.20	89.03	89.49	87.25	87.20	76.41	74.84	78.93	85.81	84.02	77.42	77.10

CQS Q values

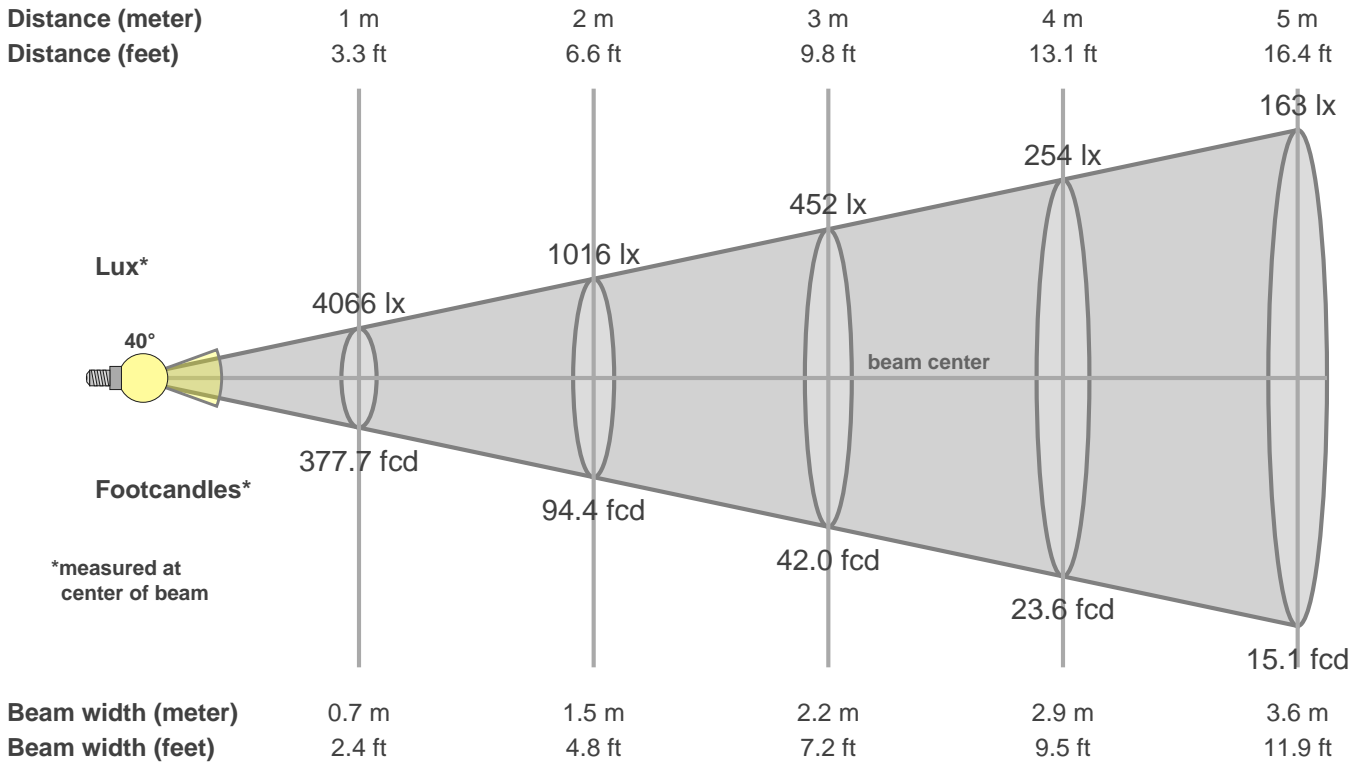
Q1	Q2	Q3	Q4	Q5	Q6	Q7	Q8	Q9	Q10	Q11	Q12	Q13	Q14	Q15
81.77	97.53	77.57	76.57	81.58	82.16	83.78	88.96	96.20	85.33	83.00	82.62	82.94	71.88	75.44

CQS: 81.9



Color parameters

CCT	CRI	CRI R9	TM30 Rf	TM30 Rg	CQS	x	y	u	v	Duv
4102 K	81.6	10.3	81.2	97.5	81.9	0.4	0.4	0.2	0.3	0.0015



Intensities in 0° c-plane

0°	2°	4°	6°	8°	10°	12°	14°	16°	18°	20°	22°	24°	26°	28°	30°	32°	34°	36°	38°
4066	4044	3977	3865	3711	3508	3263	2980	2668	2354	2052	1774	1527	1310	1123	966	834	717	614	524
100%	99%	98%	95%	91%	86%	80%	73%	66%	58%	50%	44%	38%	32%	28%	24%	21%	18%	15%	13%

Intensities in 90° c-plane

0°	2°	4°	6°	8°	10°	12°	14°	16°	18°	20°	22°	24°	26°	28°	30°	32°	34°	36°	38°
4066	4040	3967	3842	3681	3478	3244	2981	2686	2372	2058	1760	1488	1248	1046	879	743	630	536	458
100%	99%	98%	95%	91%	86%	80%	73%	66%	58%	51%	43%	37%	31%	26%	22%	18%	15%	13%	11%

Intensities in 180° c-plane

0°	2°	4°	6°	8°	10°	12°	14°	16°	18°	20°	22°	24°	26°	28°	30°	32°	34°	36°	38°
4066	4044	3977	3865	3711	3508	3263	2980	2668	2354	2052	1774	1527	1310	1123	966	834	717	614	524
100%	99%	98%	95%	91%	86%	80%	73%	66%	58%	50%	44%	38%	32%	28%	24%	21%	18%	15%	13%

Intensities in 270° c-plane

0°	2°	4°	6°	8°	10°	12°	14°	16°	18°	20°	22°	24°	26°	28°	30°	32°	34°	36°	38°
4066	4040	3967	3842	3681	3478	3244	2981	2686	2372	2058	1760	1488	1248	1046	879	743	630	536	458
100%	99%	98%	95%	91%	86%	80%	73%	66%	58%	51%	43%	37%	31%	26%	22%	18%	15%	13%	11%

Beam angle 50%	Field angle 10%	Cutoff angle 2.5%	Intensity ratio in 120° cone	Intensity ratio in 90° cone
39.9°	80.1°	111.5°	94.5%	87.3%