



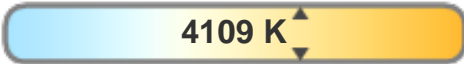
Light efficiency:



Light quality:



Color temperature:



Output: 2553 lm

Peak: 2465 cd

Power: 32.4 W

48.0V @ 0.675A



Product name:

PH-FL100-RGBW40K-OM-WHITE-55-ELV

Date and time:

3/20/2017 4:43:59 PM

Additional information:

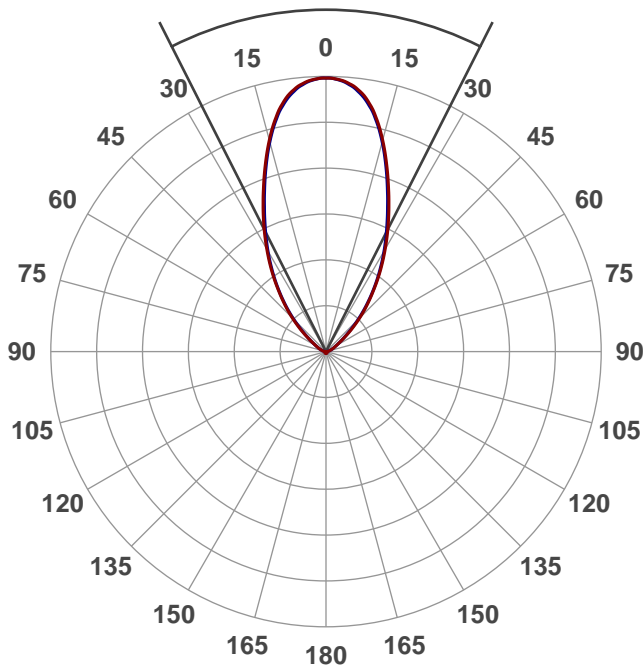
BEAM ANGLE: 55°

10% Beam Angle: 101°

Beam angle

53.6°

6 PLANES

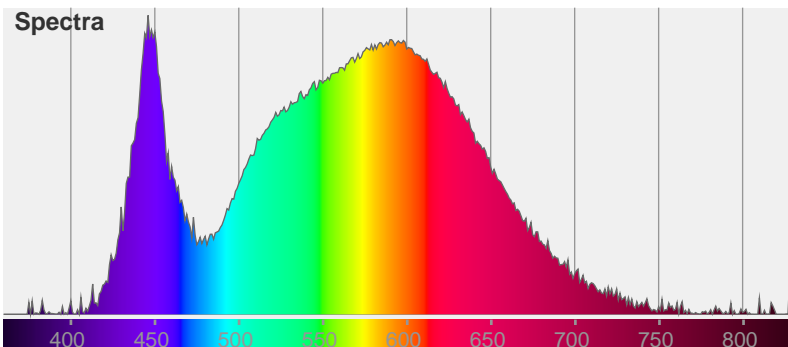


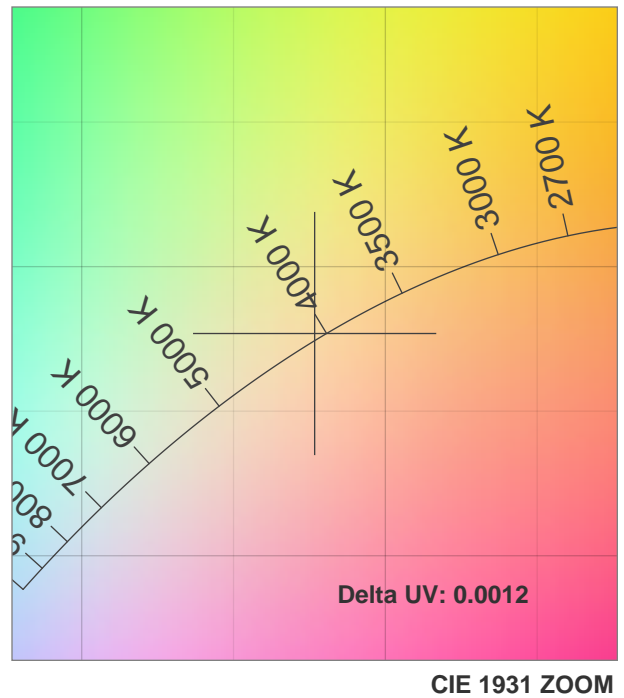
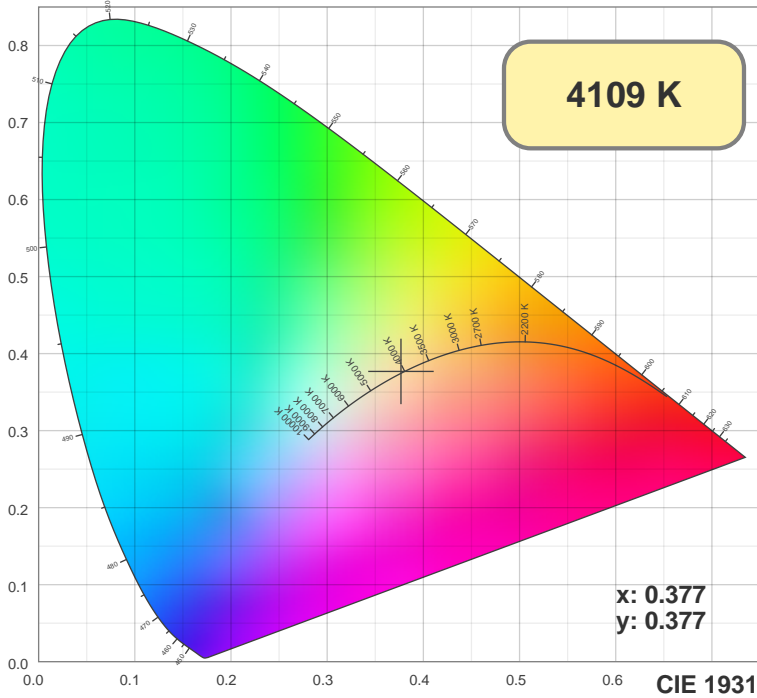
Color



CIE1931  
x: 0.377  
y: 0.377

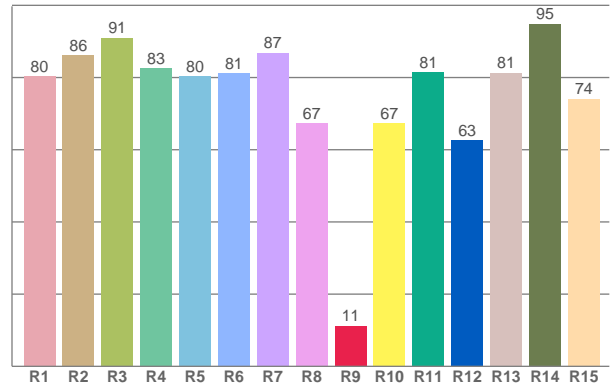
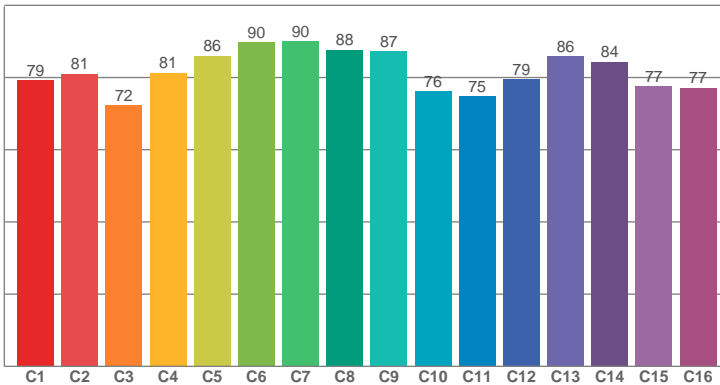
Spectra





TM30: 81.5

CRI: 81.9 (R1-R8)



CRI R values, only R1-R8 are used to calculate final CRI value

R1	R2	R3	R4	R5	R6	R7	R8	R9	R10	R11	R12	R13	R14	R15
80.26	86.15	90.98	82.60	80.30	81.22	86.80	67.24	11.21	67.33	81.46	62.65	81.28	94.84	74.07

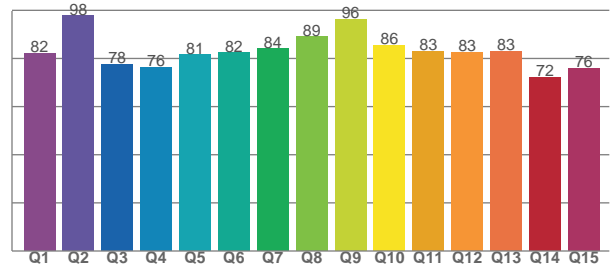
TM30 C values, 16 binned values out of total of 99 C values

C1	C2	C3	C4	C5	C6	C7	C8	C9	C10	C11	C12	C13	C14	C15	C16
79.24	81.05	72.34	81.29	85.96	89.82	89.95	87.71	87.28	76.19	74.78	79.43	85.86	84.35	77.47	77.13

CQS Q values

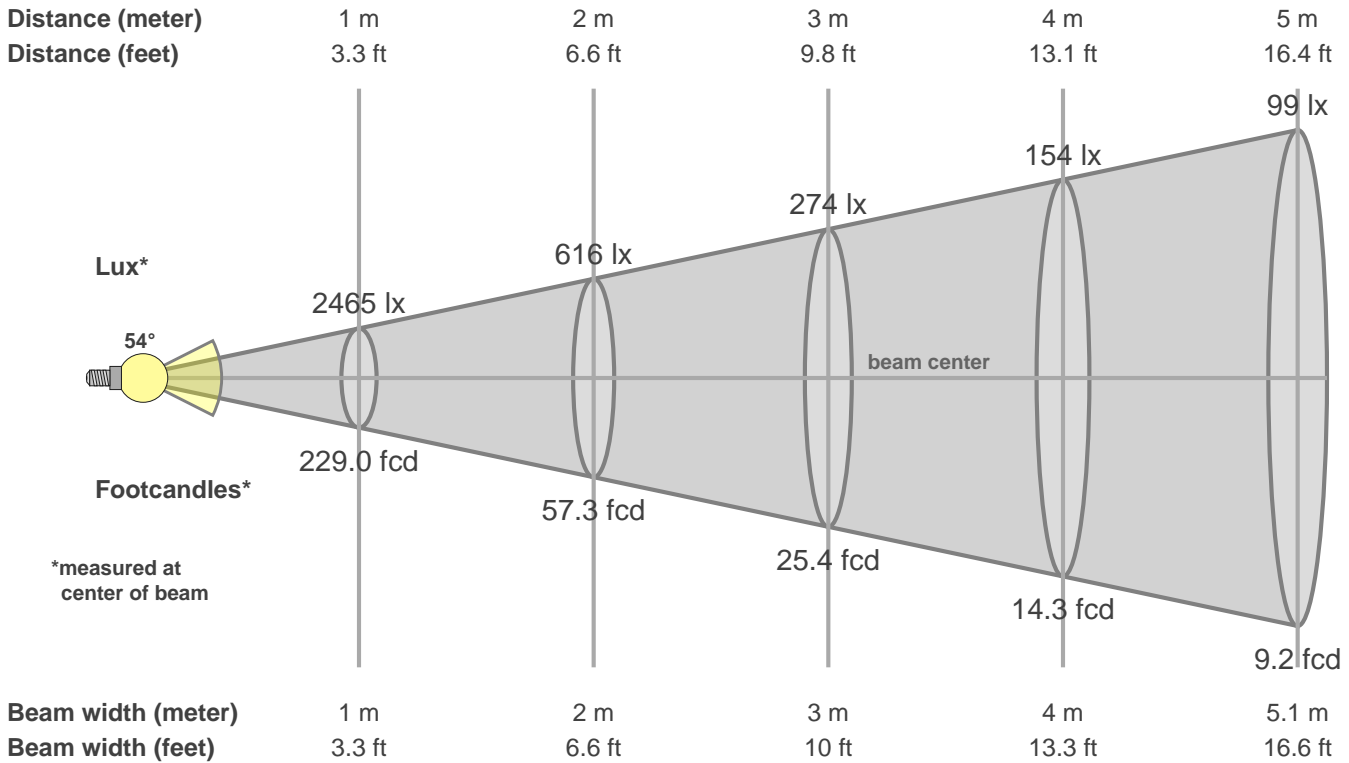
Q1	Q2	Q3	Q4	Q5	Q6	Q7	Q8	Q9	Q10	Q11	Q12	Q13	Q14	Q15
82.15	97.72	77.56	76.24	81.45	82.36	83.98	88.93	96.30	85.57	83.02	82.59	82.91	72.15	75.74

CQS: 81.9



Color parameters

CCT	CRI	CRI R9	TM30 Rf	TM30 Rg	CQS	x	y	u	v	Duv
4109 K	81.9	11.2	81.5	97.3	81.9	0.4	0.4	0.2	0.3	0.0012



\*measured at center of beam

Intensities in 0° c-plane

0°	5°	10°	15°	20°	25°	30°	35°	40°	45°	50°	55°	60°	65°	70°	75°	80°	85°	90°	95°
2465	2423	2266	1973	1637	1335	1066	825	610	428	272	162	104	73	50	34	21	11	7	7
100%	98%	92%	80%	66%	54%	43%	33%	25%	17%	11%	7%	4%	3%	2%	1%	1%	0%	0%	0%

Intensities in 90° c-plane

0°	5°	10°	15°	20°	25°	30°	35°	40°	45°	50°	55°	60°	65°	70°	75°	80°	85°	90°	95°
2465	2414	2249	1956	1613	1305	1047	811	597	409	255	159	104	71	52	34	20	11	7	6
100%	98%	91%	79%	65%	53%	42%	33%	24%	17%	10%	6%	4%	3%	2%	1%	1%	0%	0%	0%

Intensities in 180° c-plane

0°	5°	10°	15°	20°	25°	30°	35°	40°	45°	50°	55°	60°	65°	70°	75°	80°	85°	90°	95°
2465	2423	2266	1973	1637	1335	1066	825	610	428	272	162	104	73	50	34	21	11	7	7
100%	98%	92%	80%	66%	54%	43%	33%	25%	17%	11%	7%	4%	3%	2%	1%	1%	0%	0%	0%

Intensities in 270° c-plane

0°	5°	10°	15°	20°	25°	30°	35°	40°	45°	50°	55°	60°	65°	70°	75°	80°	85°	90°	95°
2465	2414	2249	1956	1613	1305	1047	811	597	409	255	159	104	71	52	34	20	11	7	6
100%	98%	91%	79%	65%	53%	42%	33%	24%	17%	10%	6%	4%	3%	2%	1%	1%	0%	0%	0%

Beam angle 50%	Field angle 10%	Cutoff angle 2.5%	Intensity ratio in 120° cone	Intensity ratio in 90° cone
53.6°	101.7°	134.5°	93.2%	81.9%