



Light efficiency:

75 Lumen/Watt

Light quality:

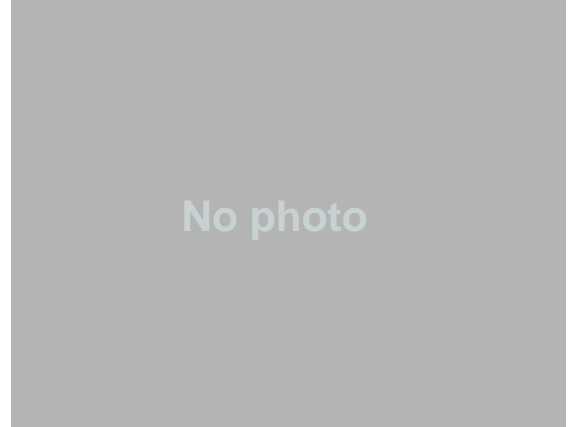
CRI: 81.6

Color temperature:

4079 K

Output: 2505 lm  
Peak: 57336 cd

Power: 33.4 W  
48.2V @ 0.693A



Product name:

PH-FL100-RGBW40K-OM-WHITE-7-ELV

Date and time:

19-Dec-16 3:50:58 PM

Additional information:

FULL POWER

NORMALIZED: YES

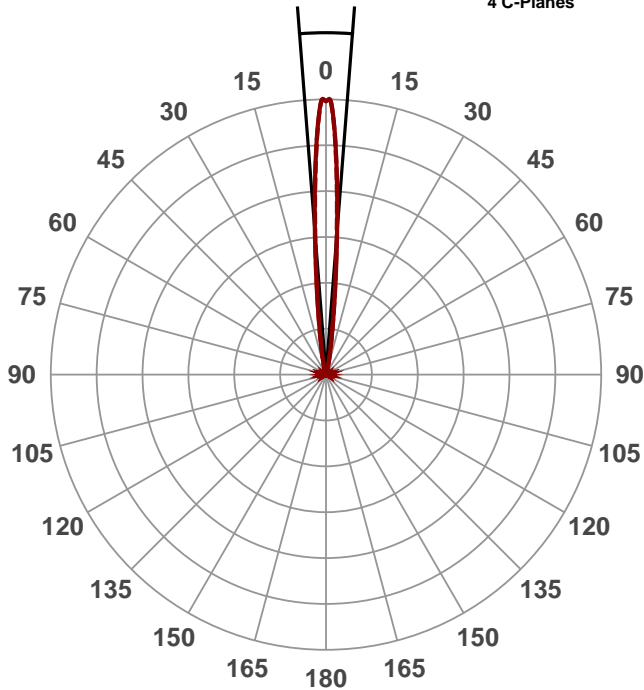
DETAILED SCAN

PERFORMED BY: PRIYA K

Beam angle

8.9°

(2 PLANES)  
4 C-Planes

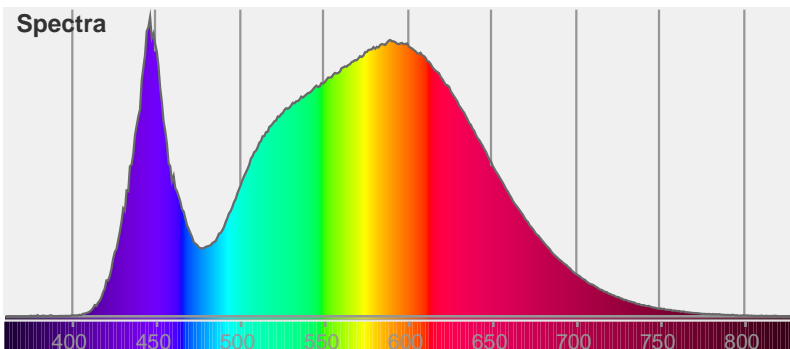


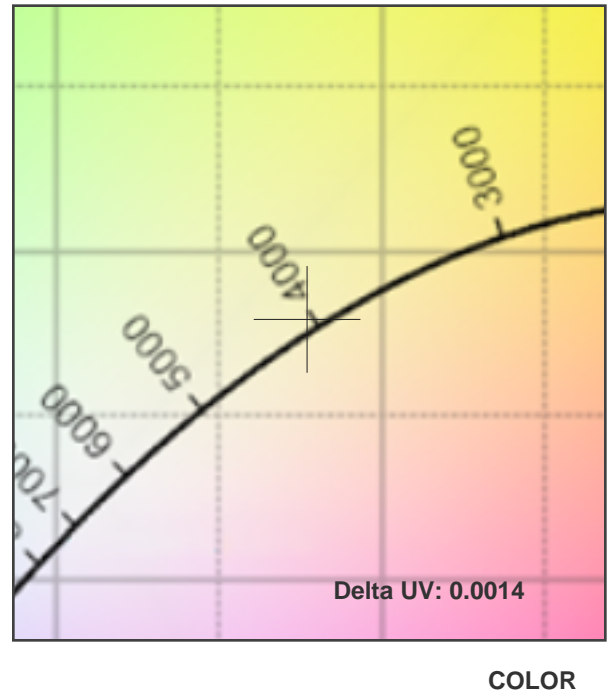
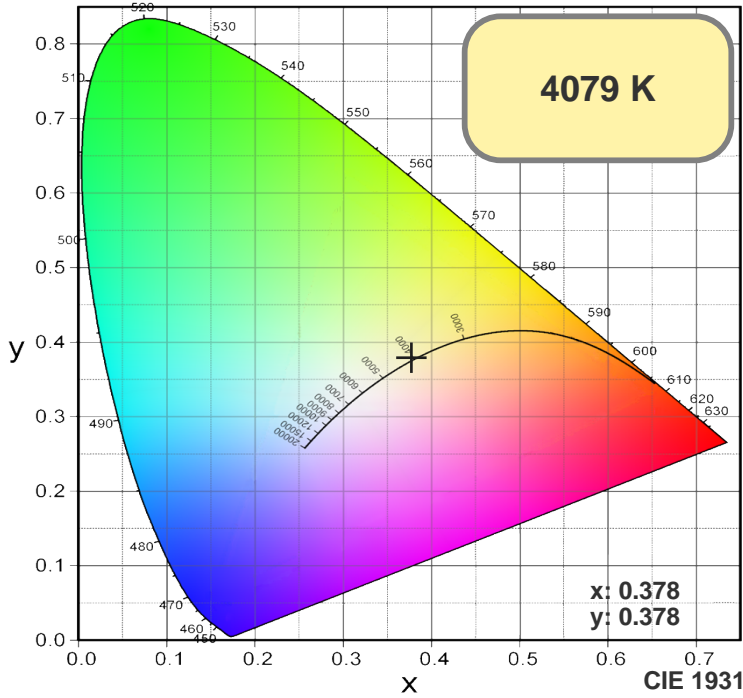
Color



CIE1931  
x: 0.378  
y: 0.378

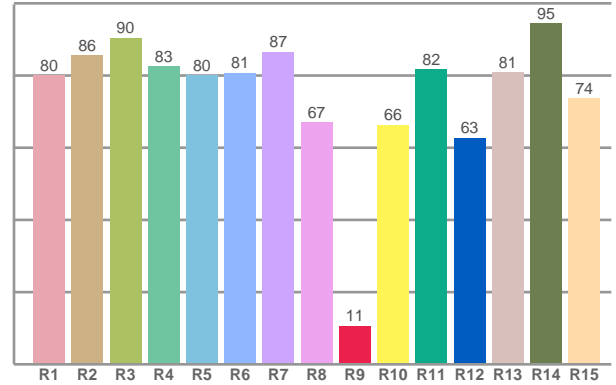
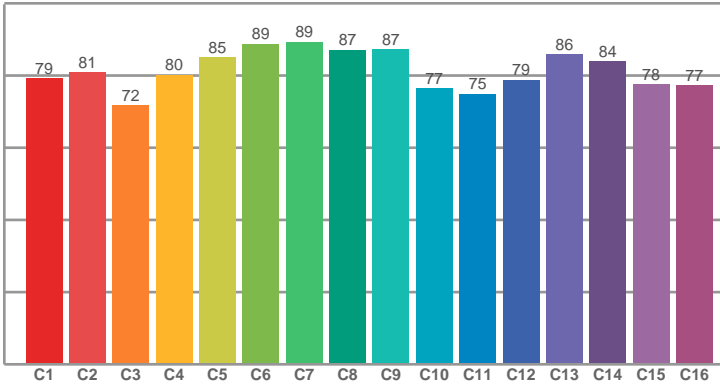
Spectra





**TM30: 81.2**

**CRI: 81.6 (R1-R8)**



**CRI R values, only R1-R8 are used to calculate final CRI value**

R1	R2	R3	R4	R5	R6	R7	R8	R9	R10	R11	R12	R13	R14	R15
80.01	85.62	90.43	82.58	80.06	80.69	86.56	67.11	10.65	66.29	81.65	62.74	80.87	94.51	73.66

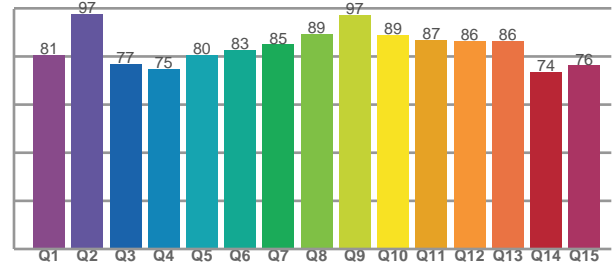
**TM30 C values, 16 binned values out of total of 99 C values**

C1	C2	C3	C4	C5	C6	C7	C8	C9	C10	C11	C12	C13	C14	C15	C16
79.25	80.91	71.72	80.17	84.98	88.78	89.31	87.15	87.21	76.52	74.95	78.85	85.83	84.01	77.53	77.28

**CQS Q values**

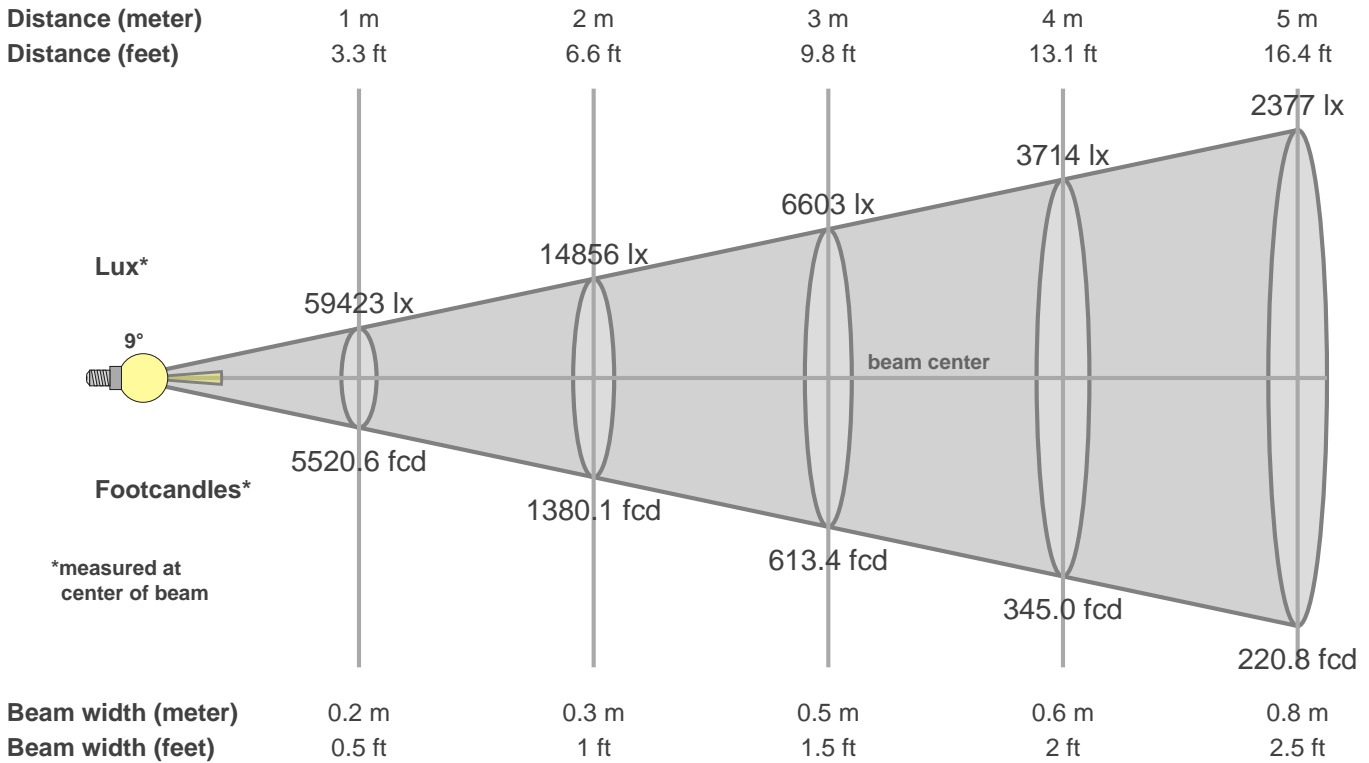
Q1	Q2	Q3	Q4	Q5	Q6	Q7	Q8	Q9	Q10	Q11	Q12	Q13	Q14	Q15
80.61	97.50	76.81	74.58	80.47	82.57	84.86	89.04	97.09	88.80	86.71	86.38	86.14	73.51	76.07

**CQS: 82.6**



**Color parameters**

CCT	CRI	CRI R9	TM30 Rf	TM30 Rg	CQS	x	y	u	v	Duv
4079 K	81.6	10.7	81.2	97.7	82.6	0.4	0.4	0.2	0.3	0.0014



Intensities in 0° c-plane

0°	1°	2°	3°	4°	5°	6°	7°	8°	9°	10°	11°	12°	13°	14°	15°	16°	17°	18°	19°
59.4K	57.3K	51.4K	42.8K	33.8K	25.5K	18.7K	13.5K	9.9K	7.2K	5.3K	4.0K	3.0K	2.3K	1.8K	1.4K	1.1K	0.9K	0.8K	0.6K
100%	96%	86%	72%	57%	43%	31%	23%	17%	12%	9%	7%	5%	4%	3%	2%	2%	2%	1%	1%

Intensities in 90° c-plane

0°	1°	2°	3°	4°	5°	6°	7°	8°	9°	10°	11°	12°	13°	14°	15°	16°	17°	18°	19°
59.4K	57.2K	51.0K	42.3K	32.9K	24.5K	18.0K	13.1K	9.5K	7.0K	5.2K	3.9K	3.0K	2.3K	1.8K	1.4K	1.1K	0.9K	0.8K	0.6K
100%	96%	86%	71%	55%	41%	30%	22%	16%	12%	9%	7%	5%	4%	3%	2%	2%	2%	1%	1%

Intensities in 180° c-plane

0°	1°	2°	3°	4°	5°	6°	7°	8°	9°	10°	11°	12°	13°	14°	15°	16°	17°	18°	19°
59.4K	57.3K	51.4K	42.8K	33.8K	25.5K	18.7K	13.5K	9.9K	7.2K	5.3K	4.0K	3.0K	2.3K	1.8K	1.4K	1.1K	0.9K	0.8K	0.6K
100%	96%	86%	72%	57%	43%	31%	23%	17%	12%	9%	7%	5%	4%	3%	2%	2%	2%	1%	1%

Intensities in 270° c-plane

0°	1°	2°	3°	4°	5°	6°	7°	8°	9°	10°	11°	12°	13°	14°	15°	16°	17°	18°	19°
59.4K	57.2K	51.0K	42.3K	32.9K	24.5K	18.0K	13.1K	9.5K	7.0K	5.2K	3.9K	3.0K	2.3K	1.8K	1.4K	1.1K	0.9K	0.8K	0.6K
100%	96%	86%	71%	55%	41%	30%	22%	16%	12%	9%	7%	5%	4%	3%	2%	2%	2%	1%	1%

Beam angle 50%	Field angle 10%	Cutoff angle 2.5%	Intensity ratio in 120° cone	Intensity ratio in 90° cone
8.9°	19.3°	29.6°	98.6%	97.0%