



Light efficiency:



Light quality:



Color temperature:



Output: 2727 lm

Peak: 1791 cd

Power: 32.2 W

48.0V @ 0.671A



Product name:

PH-FL100-RGBW40K-OM-WHITE-75-ELV

Date and time:

4/3/2017 9:37:32 AM

Additional information:

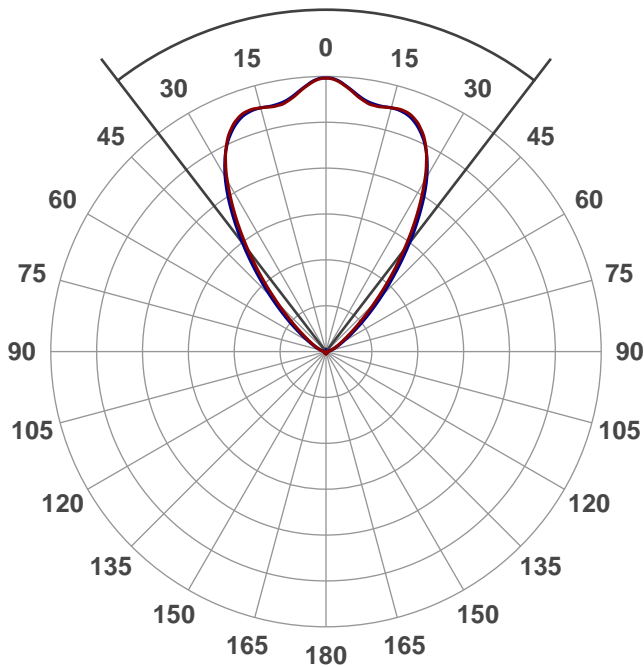
BEAM ANGLE: 75°

10% Beam Angle: 111°

Beam angle

75°

14 PLANES



Color

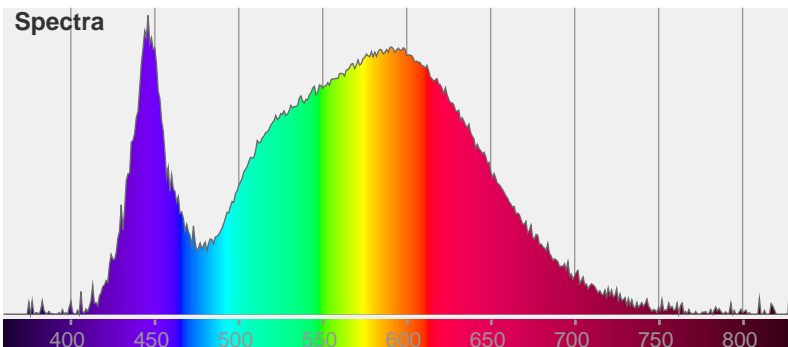


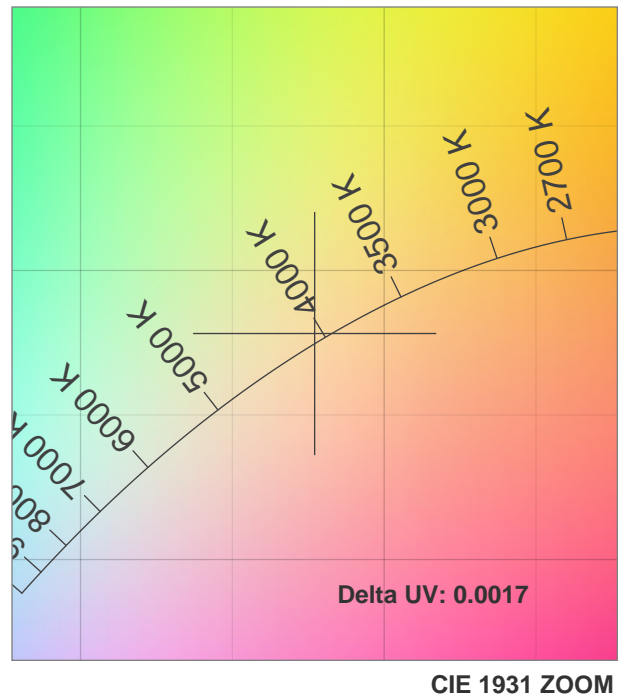
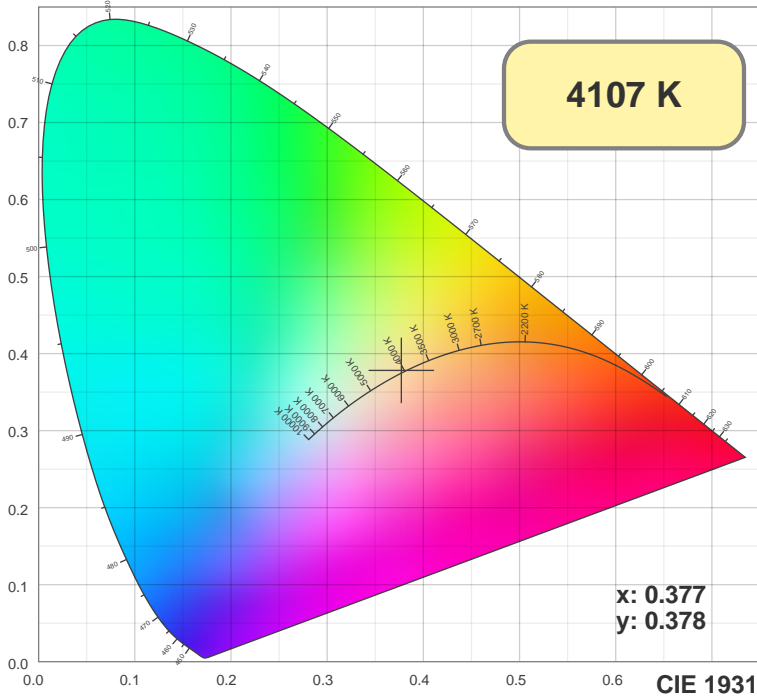
CIE1931

x: 0.377

y: 0.378

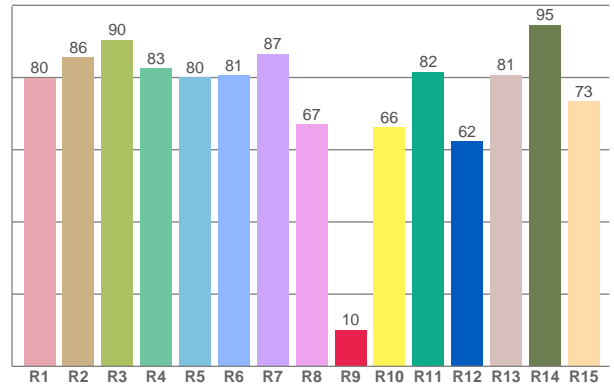
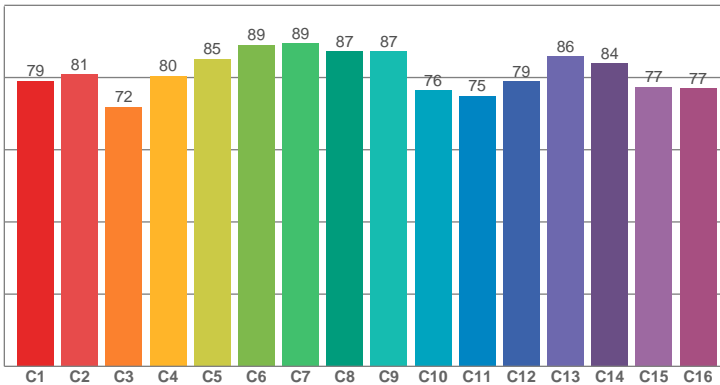
Spectra





TM30: 81.2

CRI: 81.6 (R1-R8)



CRI R values, only R1-R8 are used to calculate final CRI value

R1	R2	R3	R4	R5	R6	R7	R8	R9	R10	R11	R12	R13	R14	R15
79.90	85.57	90.47	82.53	79.97	80.64	86.60	67.01	10.08	66.20	81.59	62.36	80.79	94.55	73.47

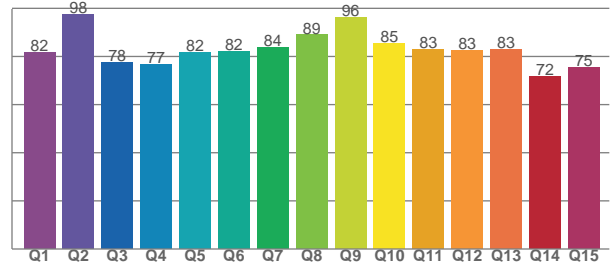
TM30 C values, 16 binned values out of total of 99 C values

C1	C2	C3	C4	C5	C6	C7	C8	C9	C10	C11	C12	C13	C14	C15	C16
79.13	80.91	71.88	80.48	85.22	89.05	89.49	87.22	87.18	76.43	74.87	78.95	85.81	83.99	77.38	77.05

CQS Q values

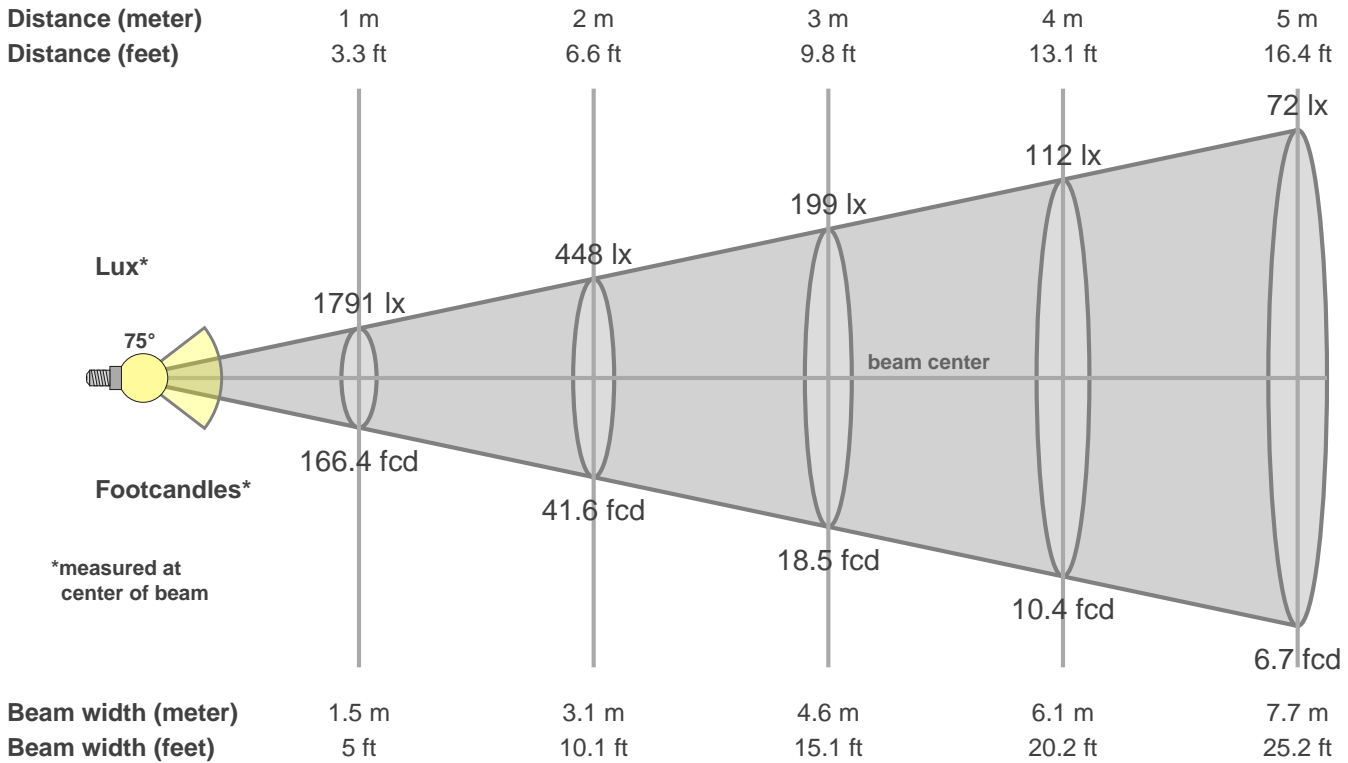
Q1	Q2	Q3	Q4	Q5	Q6	Q7	Q8	Q9	Q10	Q11	Q12	Q13	Q14	Q15
81.74	97.54	77.63	76.63	81.60	82.15	83.79	88.98	96.21	85.36	83.07	82.69	82.98	71.82	75.40

CQS: 81.9



Color parameters

CCT	CRI	CRI R9	TM30 Rf	TM30 Rg	CQS	x	y	u	v	Duv
4107 K	81.6	10.1	81.2	97.5	81.9	0.4	0.4	0.2	0.3	0.0017



Intensities in 0° c-plane

0°	5°	10°	15°	20°	25°	30°	35°	40°	45°	50°	55°	60°	65°	70°	75°	80°	85°	90°	95°
1791	1725	1642	1650	1640	1526	1291	989	691	443	269	164	105	72	51	34	20	11	6	6
100%	96%	92%	92%	92%	85%	72%	55%	39%	25%	15%	9%	6%	4%	3%	2%	1%	1%	0%	0%

Intensities in 90° c-plane

0°	5°	10°	15°	20°	25°	30°	35°	40°	45°	50°	55°	60°	65°	70°	75°	80°	85°	90°	95°
1791	1729	1653	1650	1626	1517	1318	1043	758	515	330	204	127	83	55	36	21	11	6	7
100%	97%	92%	92%	91%	85%	74%	58%	42%	29%	18%	11%	7%	5%	3%	2%	1%	1%	0%	0%

Intensities in 180° c-plane

0°	5°	10°	15°	20°	25°	30°	35°	40°	45°	50°	55°	60°	65°	70°	75°	80°	85°	90°	95°
1791	1725	1642	1650	1640	1526	1291	989	691	443	269	164	105	72	51	34	20	11	6	6
100%	96%	92%	92%	92%	85%	72%	55%	39%	25%	15%	9%	6%	4%	3%	2%	1%	1%	0%	0%

Intensities in 270° c-plane

0°	5°	10°	15°	20°	25°	30°	35°	40°	45°	50°	55°	60°	65°	70°	75°	80°	85°	90°	95°
1791	1729	1653	1650	1626	1517	1318	1043	758	515	330	204	127	83	55	36	21	11	6	7
100%	97%	92%	92%	91%	85%	74%	58%	42%	29%	18%	11%	7%	5%	3%	2%	1%	1%	0%	0%

Beam angle 50%	Field angle 10%	Cutoff angle 2.5%	Intensity ratio in 120° cone	Intensity ratio in 90° cone
75.0°	111.0°	144.3°	93.3%	80.9%