

Light efficiency:

54 Lumen/Watt

Light quality:

CRI: 74.2

Color temperature:

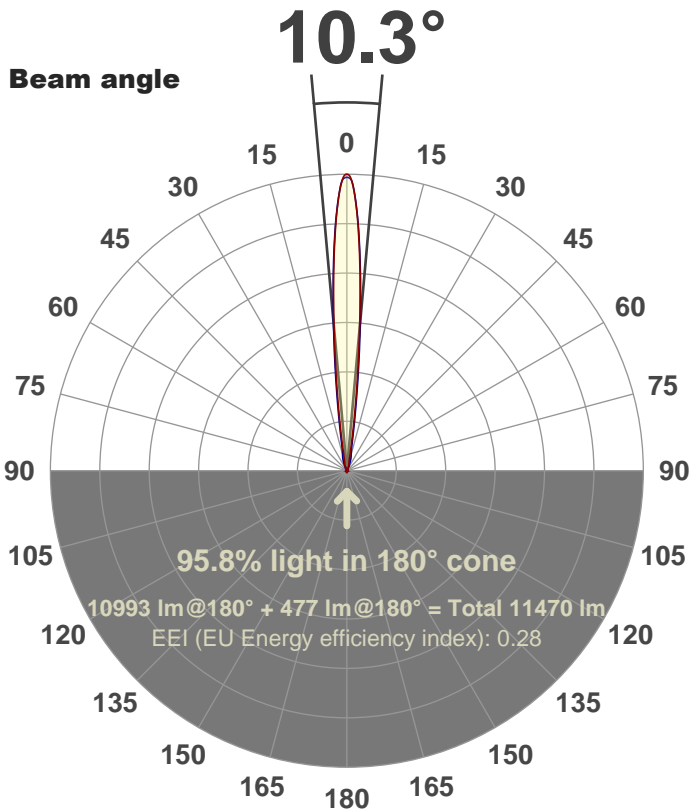
6657 K

Output: 10993 lm

Peak: 184706 cd

Power: 203 W

PF: 1.0



Product name:

FL200-CM-RGBW-IM-10-ELV-SM-WHITE

Date and time:

27-Aug-18 5:10:04 PM

Additional Information:

LED: RGBW

FIXTURE: FL200

FILM: 250270 (10°)

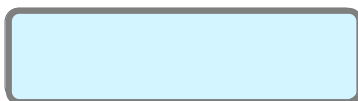
COLOR-AMP: ON

STABILIZED: YES

COLOR (RGBW): WHITE

PERFORMED BY: ABDULLAH QURESHI

Color

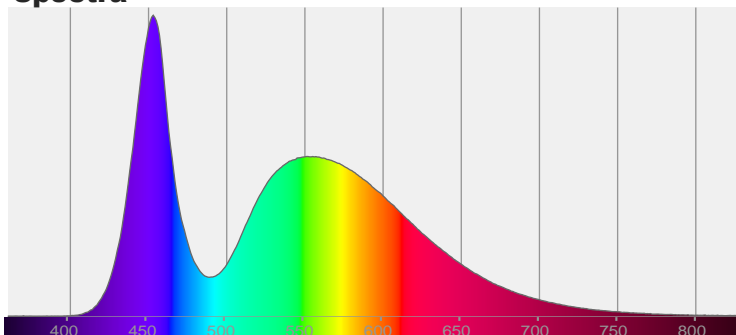


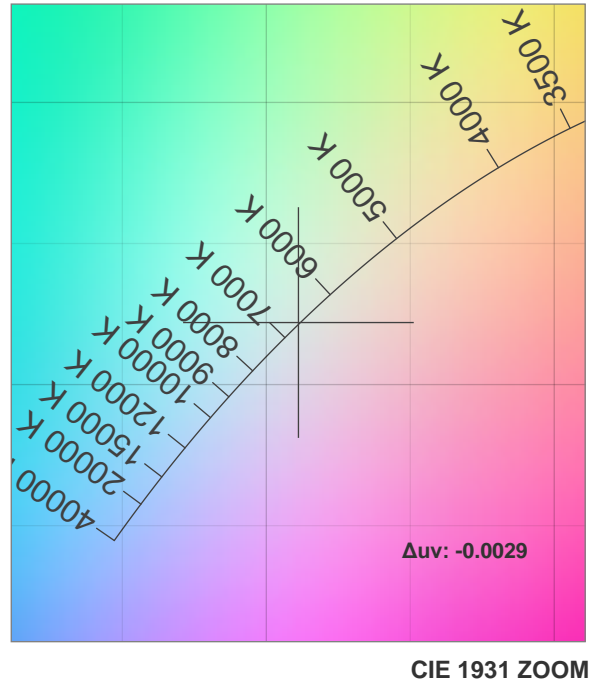
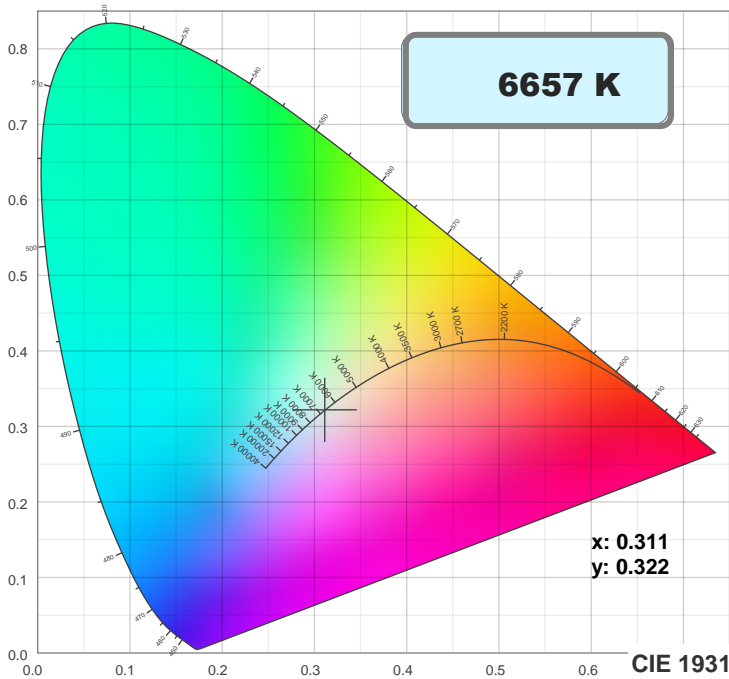
CIE 1931

x: 0.311

y: 0.322

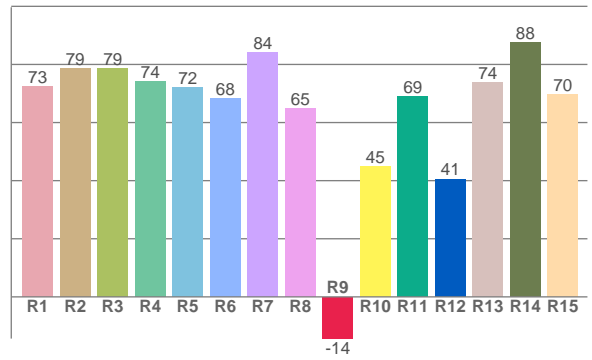
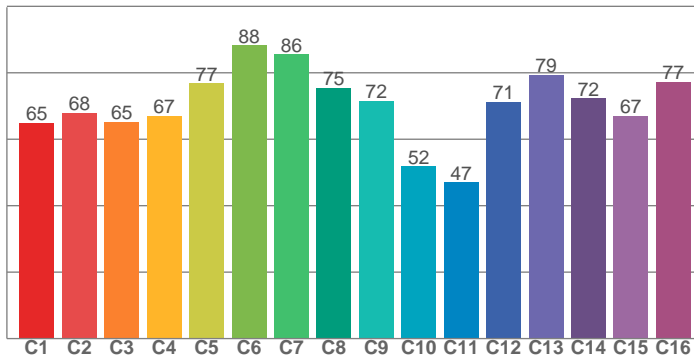
Spectra



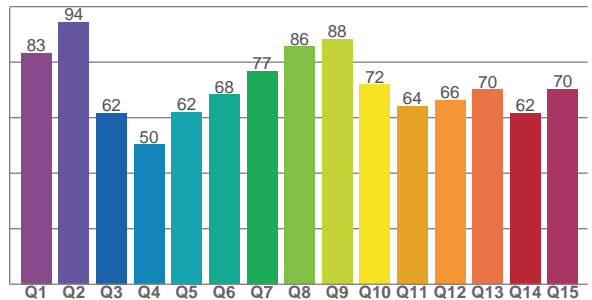


TM30: 70.4

CRI: 74.2 (R1-R8)



CQS: 69.4



CRI R values, only R1-R8 are used to calculate final CRI value

R1	R2	R3	R4	R5	R6	R7	R8	R9	R10	R11	R12	R13	R14	R15
72.6	78.7	78.6	74.2	72.2	68.3	84.2	65.0	-14.4	45.1	68.9	40.6	73.8	87.7	69.8

TM30 C values, 16 binned values out of total of 99 C values

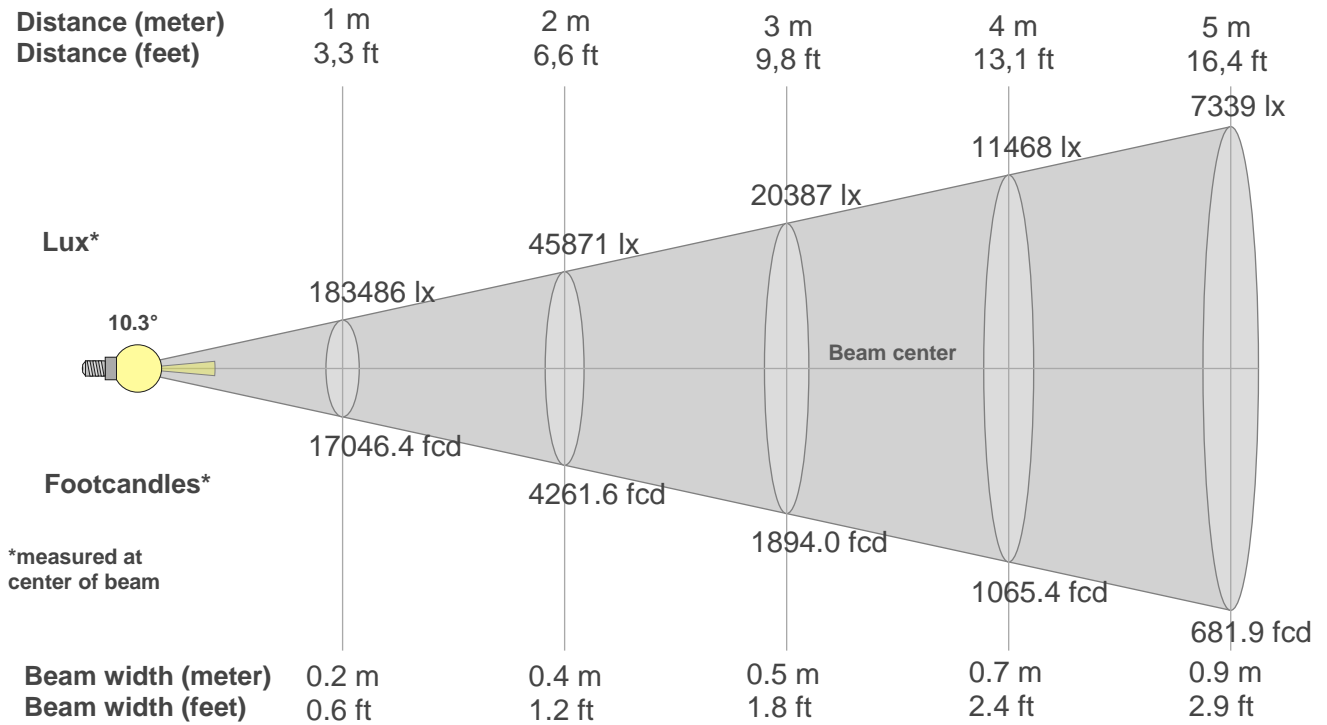
C1	C2	C3	C4	C5	C6	C7	C8	C9	C10	C11	C12	C13	C14	C15	C16
64.9	67.9	65.1	67.0	76.8	88.2	85.5	75.4	71.5	51.8	47.1	71.2	79.3	72.4	67.0	77.3

CQS Q values

Q1	Q2	Q3	Q4	Q5	Q6	Q7	Q8	Q9	Q10	Q11	Q12	Q13	Q14	Q15
83.3	94.4	61.7	50.3	62.1	68.3	76.7	85.6	88.3	72.0	64.2	66.3	70.1	61.7	70.4

Color parameters

Color temperature	Color rendering index	Red component	Color fidelity	Color gamut	Color quality scale	Color coordinate cie 1931	Color coordinate cie 1931	Color coordinate	Color coordinate	Color deviation from black body
CCT	CRI	CRI R9	TM30 Rf	TM30 Rg	CQS	x	y	u	v	Δuv
6657 K	74.2	-14.4	70.4	92.8	69.4	0.311	0.322	0.199	0.310	-0.0029



Beam intensities from 1-20m

1m	2m	3m	4m	5m	6m	7m	8m	9m	10m	11m	12m	13m	14m	15m	16m	17m	18m	19m	20m
3.3ft	6.6ft	9.8ft	13.1ft	16.4ft	19.7ft	23ft	26.2ft	29.5ft	32.8ft	36.1ft	39.4ft	42.7ft	45.9ft	49.2ft	52.5ft	55.8ft	59.1ft	62.3ft	65.6ft
183486 lx	45871 lx	20387 lx	11468 lx	7339 lx	5097 lx	3745 lx	2867 lx	2265 lx	1835 lx	1516 lx	1274 lx	1086 lx	936 lx	815 lx	717 lx	635 lx	566 lx	508 lx	459 lx
17046.4 fcd	4261.6 fcd	1894 fcd	1065.4 fcd	681.9 fcd	473.5 fcd	347.9 fcd	266.3 fcd	210.4 fcd	170.5 fcd	140.9 fcd	118.4 fcd	100.9 fcd	87 fcd	75.8 fcd	66.6 fcd	59 fcd	52.6 fcd	47.2 fcd	42.6 fcd

Intensities in 0° c-plane

0°	1°	2°	3°	4°	5°	6°	7°	8°	9°	10°	11°	12°	13°	14°	15°	16°	17°	18°	19°
183K	180K	166K	144K	119K	93K	69K	49K	33K	22K	15K	11K	8K	6K	5K	5K	5K	4K	4K	4K
100%	98%	90%	79%	65%	51%	38%	27%	18%	12%	8%	6%	4%	3%	3%	3%	3%	2%	2%	2%

Intensities in 90° c-plane

0°	1°	2°	3°	4°	5°	6°	7°	8°	9°	10°	11°	12°	13°	14°	15°	16°	17°	18°	19°
183K	180K	166K	146K	122K	97K	75K	56K	40K	29K	22K	17K	14K	12K	11K	10K	10K	9K	8K	7K
100%	98%	91%	80%	66%	53%	41%	30%	22%	16%	12%	9%	8%	7%	6%	6%	5%	5%	4%	4%

Intensities in 180° c-plane

0°	1°	2°	3°	4°	5°	6°	7°	8°	9°	10°	11°	12°	13°	14°	15°	16°	17°	18°	19°
183K	180K	166K	144K	119K	93K	69K	49K	33K	22K	15K	11K	8K	6K	5K	5K	5K	4K	4K	4K
100%	98%	90%	79%	65%	51%	38%	27%	18%	12%	8%	6%	4%	3%	3%	3%	3%	2%	2%	2%

Intensities in 270° c-plane

0°	1°	2°	3°	4°	5°	6°	7°	8°	9°	10°	11°	12°	13°	14°	15°	16°	17°	18°	19°
183K	180K	166K	146K	122K	97K	75K	56K	40K	29K	22K	17K	14K	12K	11K	10K	10K	9K	8K	7K
100%	98%	91%	80%	66%	53%	41%	30%	22%	16%	12%	9%	8%	7%	6%	6%	5%	5%	4%	4%

Beam angle 50%	Field angle 10%	Cutoff angle 2,5%	Intensity ratio in 120° cone	Intensity ratio in 90° cone
10.3°	19.8°	37.1°	89.2%	85.2%

