

Light efficiency:

9 Lumen/Watt

Light quality:

CRI: 0.0

Color temperature:

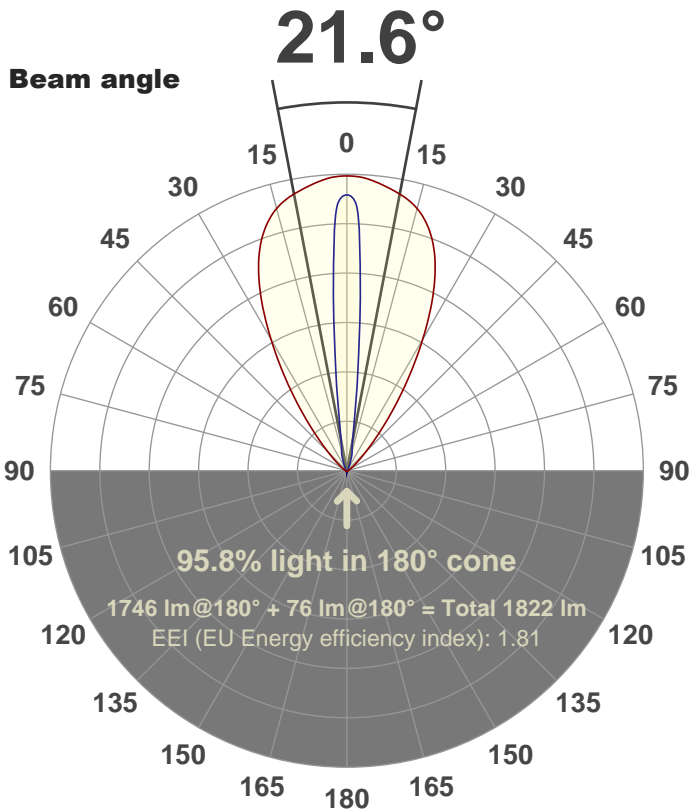
0 K

Output: 1746 lm

Peak: 6423 cd

Power: 205 W

PF: 1.0



Color



CIE 1931
x: 0.150
y: 0.029

Product name:

FL200-CM-RGBW-IM-10X60-ELV-SM-BLUE

Date and time:

24-Aug-18 1:44:03 PM

Additional Information:

LED: RGBW

FIXTURE: FL200

FILM: 250282 (10°X60°)

COLOR-AMP: ON

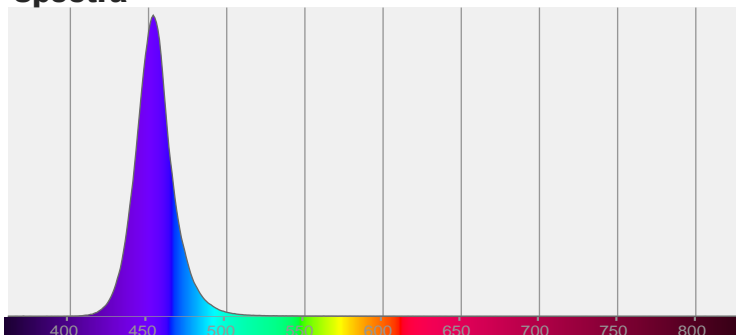
STABILIZED: YES

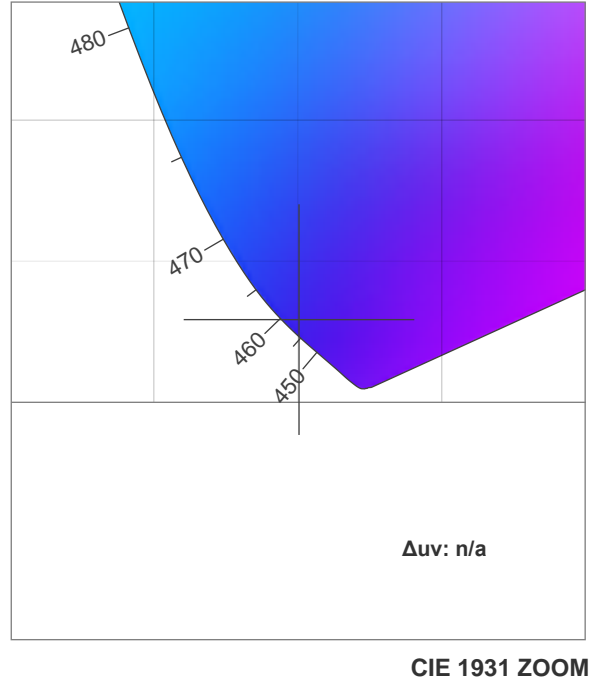
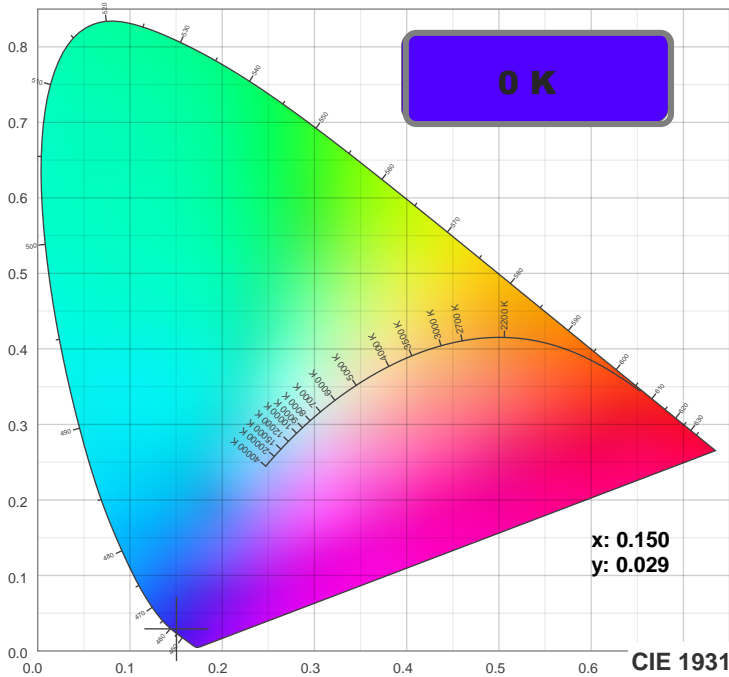
COLOR (RGBW): BLUE

FWHM: 11°X60.8°

PERFORMED BY: ABDULLAH QURESHI

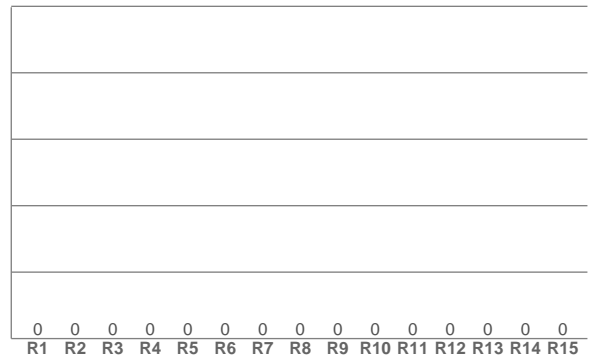
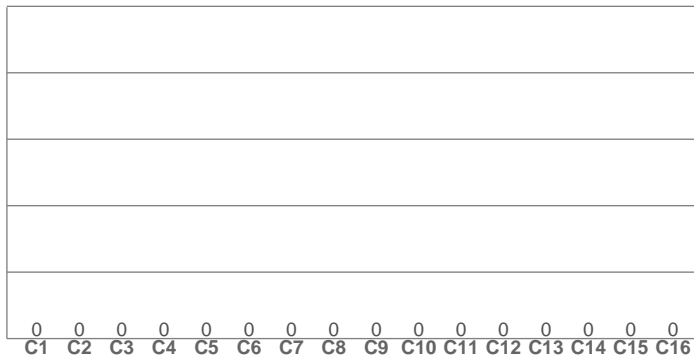
Spectra





TM30: 0.0

CRI: 0.0 (R1-R8)



CRI R values, only R1-R8 are used to calculate final CRI value

R1	R2	R3	R4	R5	R6	R7	R8	R9	R10	R11	R12	R13	R14	R15
0.0	0.0	0.0	0.0	0.0	0.0	0.0	0.0	0.0	0.0	0.0	0.0	0.0	0.0	0.0

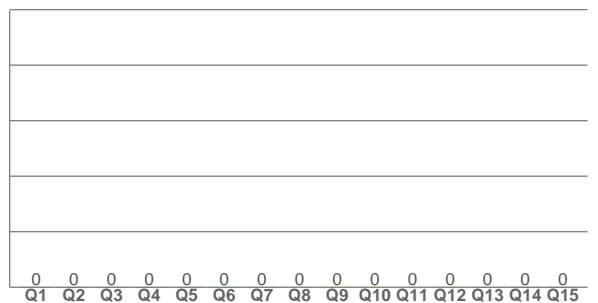
TM30 C values, 16 binned values out of total of 99 C values

C1	C2	C3	C4	C5	C6	C7	C8	C9	C10	C11	C12	C13	C14	C15	C16
0.0	0.0	0.0	0.0	0.0	0.0	0.0	0.0	0.0	0.0	0.0	0.0	0.0	0.0	0.0	0.0

CQS Q values

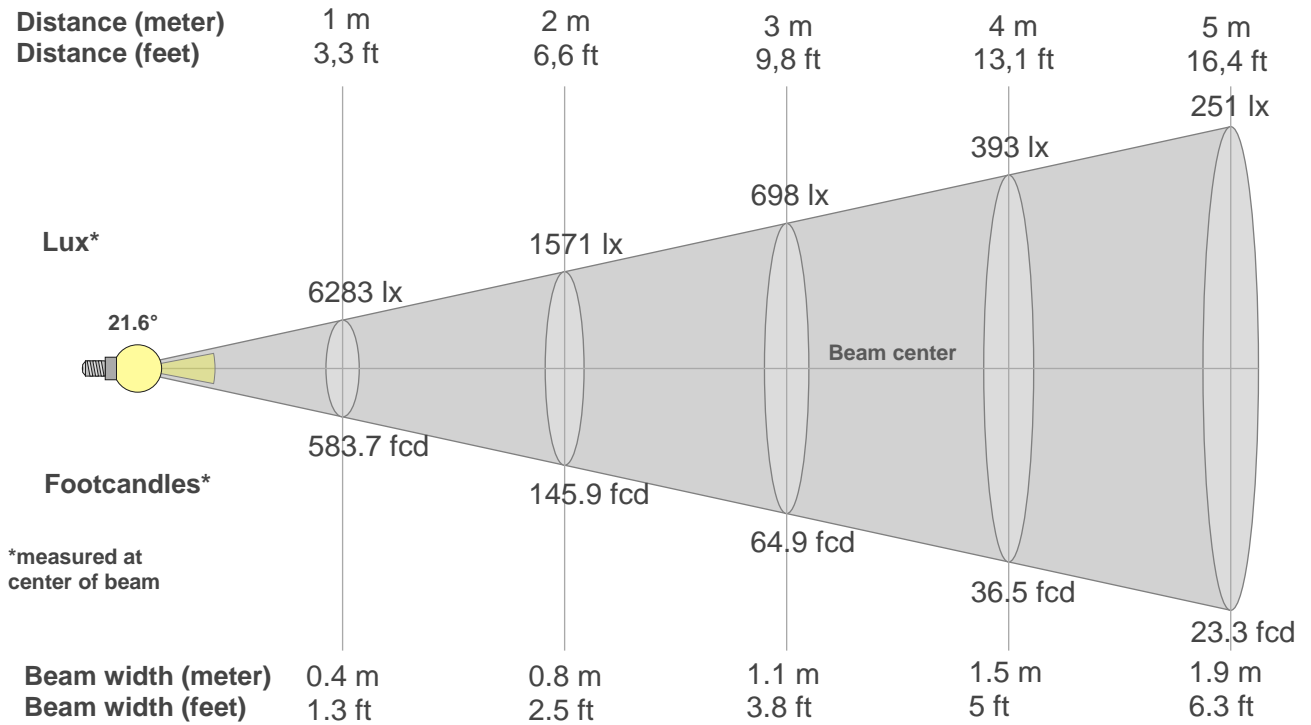
Q1	Q2	Q3	Q4	Q5	Q6	Q7	Q8	Q9	Q10	Q11	Q12	Q13	Q14	Q15
0.0	0.0	0.0	0.0	0.0	0.0	0.0	0.0	0.0	0.0	0.0	0.0	0.0	0.0	0.0

CQS: 0.0



Color parameters

Color temperature	Color rendering index	Red component	Color fidelity	Color gamut	Color quality scale	Color coordinate cie 1931	Color coordinate cie 1931	Color coordinate	Color coordinate	Color deviation from black body
CCT	CRI	CRI R9	TM30 Rf	TM30 Rg	CQS	x	y	u	v	Δuv
0 K	0.0	0.0	0.0	0.0	0.0	0.150	0.029	0.197	0.058	n/a



Beam intensities from 1-20m

1m	2m	3m	4m	5m	6m	7m	8m	9m	10m	11m	12m	13m	14m	15m	16m	17m	18m	19m	20m
3.3ft	6.6ft	9.8ft	13.1ft	16.4ft	19.7ft	23ft	26.2ft	29.5ft	32.8ft	36.1ft	39.4ft	42.7ft	45.9ft	49.2ft	52.5ft	55.8ft	59.1ft	62.3ft	65.6ft
6283lx	1571lx	698lx	393lx	251lx	175lx	128lx	98lx	78lx	63lx	52lx	44lx	37lx	32lx	28lx	25lx	22lx	19lx	17lx	16lx
583.7fcd	145.9fcd	64.9fcd	36.5fcd	23.3fcd	16.2fcd	11.9fcd	9.1fcd	7.2fcd	5.8fcd	4.8fcd	4.1fcd	3.5fcd	3fcd	2.6fcd	2.3fcd	2fcd	1.8fcd	1.6fcd	1.5fcd

Intensities in 0° c-plane

0°	2°	4°	6°	8°	10°	12°	14°	16°	18°	20°	22°	24°	26°	28°	30°	32°	34°	36°	38°
6283	6413	6377	6317	6246	6171	6089	5983	5839	5645	5401	5095	4721	4290	3810	3308	2811	2334	1894	1503
100%	102%	101%	101%	99%	98%	97%	95%	93%	90%	86%	81%	75%	68%	61%	53%	45%	37%	30%	24%

Intensities in 90° c-plane

0°	2°	4°	6°	8°	10°	12°	14°	16°	18°	20°	22°	24°	26°	28°	30°	32°	34°	36°	38°
6283	5794	4171	2455	1333	789	566	474	412	342	264	197	153	122	101	84	72	63	57	53
100%	92%	66%	39%	21%	13%	9%	8%	7%	5%	4%	3%	2%	2%	2%	1%	1%	1%	1%	1%

Intensities in 180° c-plane

0°	2°	4°	6°	8°	10°	12°	14°	16°	18°	20°	22°	24°	26°	28°	30°	32°	34°	36°	38°
6283	6413	6377	6317	6246	6171	6089	5983	5839	5645	5401	5095	4721	4290	3810	3308	2811	2334	1894	1503
100%	102%	101%	101%	99%	98%	97%	95%	93%	90%	86%	81%	75%	68%	61%	53%	45%	37%	30%	24%

Intensities in 270° c-plane

0°	2°	4°	6°	8°	10°	12°	14°	16°	18°	20°	22°	24°	26°	28°	30°	32°	34°	36°	38°
6283	5794	4171	2455	1333	789	566	474	412	342	264	197	153	122	101	84	72	63	57	53
100%	92%	66%	39%	21%	13%	9%	8%	7%	5%	4%	3%	2%	2%	2%	1%	1%	1%	1%	1%

Beam angle 50%	Field angle 10%	Cutoff angle 2,5%	Intensity ratio in 120° cone	Intensity ratio in 90° cone
21.6°	40.3°	71.3°	90.3%	84.5%