

**Light efficiency:**



**Light quality:**



**Color temperature:**

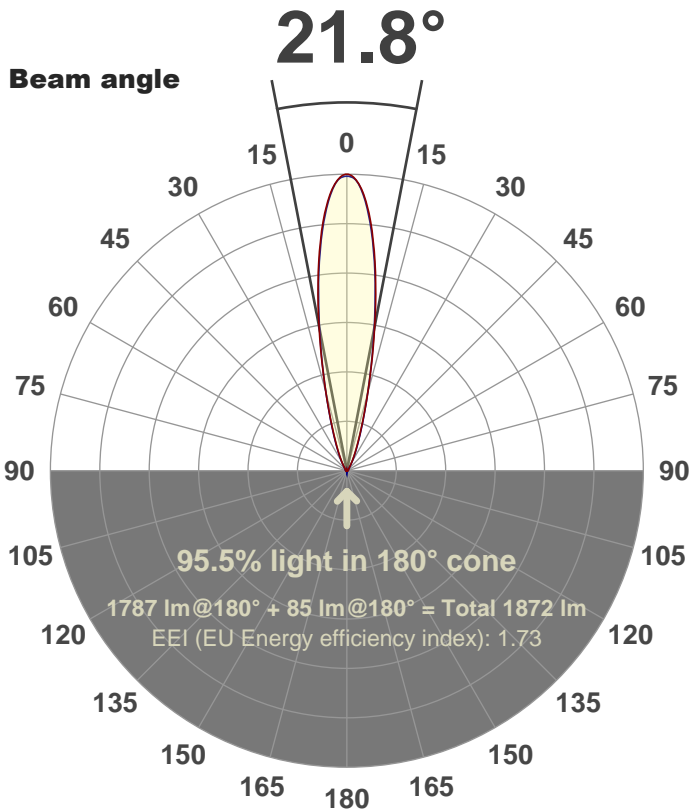


**Output: 1787 lm**

**Peak: 8219 cd**

**Power: 204 W**

**PF: 1.0**



**Product name:**

**FL200-CM-RGBW-IM-20-ELV-SM-BLUE**

**Date and time:**

**27-Aug-18 11:34:40 AM**

**Additional Information:**

**LED: RGBW**

**FIXTURE: FL200**

**FILM: 250274 (20°)**

**COLOR-AMP: ON**

**STABILIZED: YES**

**COLOR (RGBW): BLUE**

**PERFORMED BY: ABDULLAH QURESHI**

**Color**

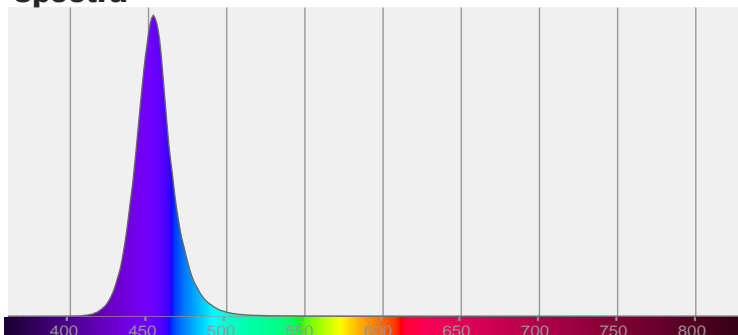


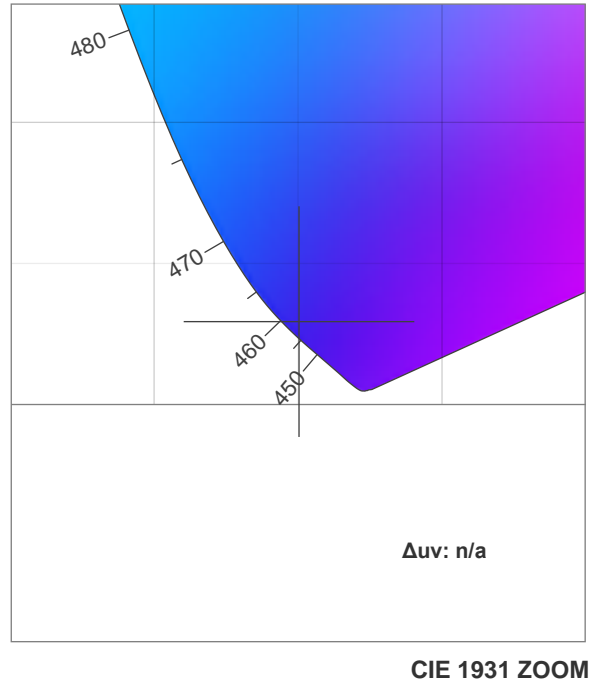
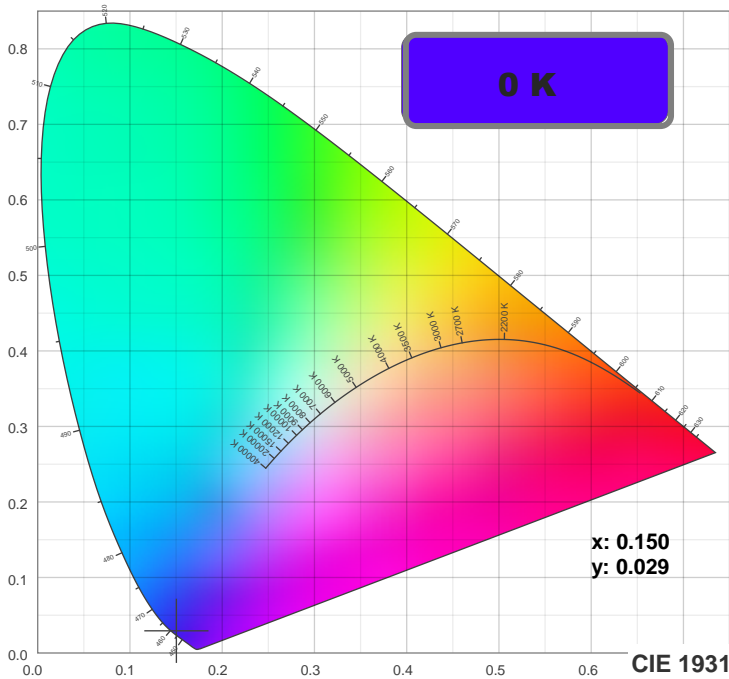
**CIE 1931**

**x: 0.150**

**y: 0.029**

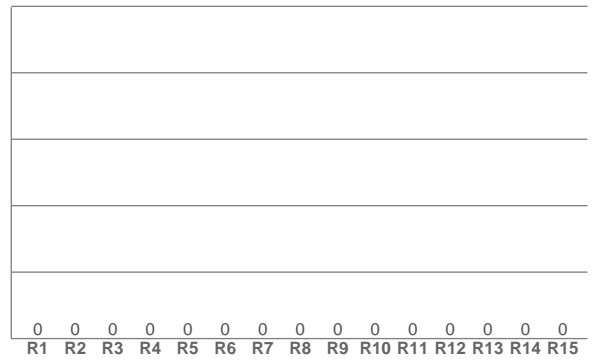
**Spectra**





**TM30: 0.0**

**CRI: 0.0 (R1-R8)**



**CRI R values, only R1-R8 are used to calculate final CRI value**

R1	R2	R3	R4	R5	R6	R7	R8	R9	R10	R11	R12	R13	R14	R15
0.0	0.0	0.0	0.0	0.0	0.0	0.0	0.0	0.0	0.0	0.0	0.0	0.0	0.0	0.0

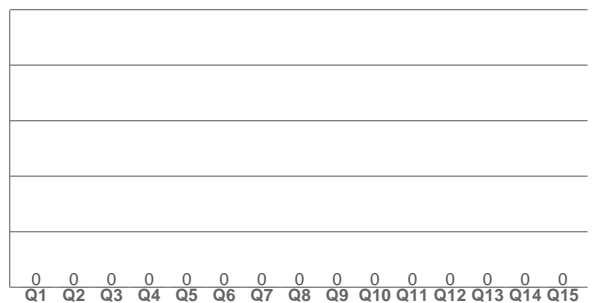
**TM30 C values, 16 binned values out of total of 99 C values**

C1	C2	C3	C4	C5	C6	C7	C8	C9	C10	C11	C12	C13	C14	C15	C16
0.0	0.0	0.0	0.0	0.0	0.0	0.0	0.0	0.0	0.0	0.0	0.0	0.0	0.0	0.0	0.0

**CQS Q values**

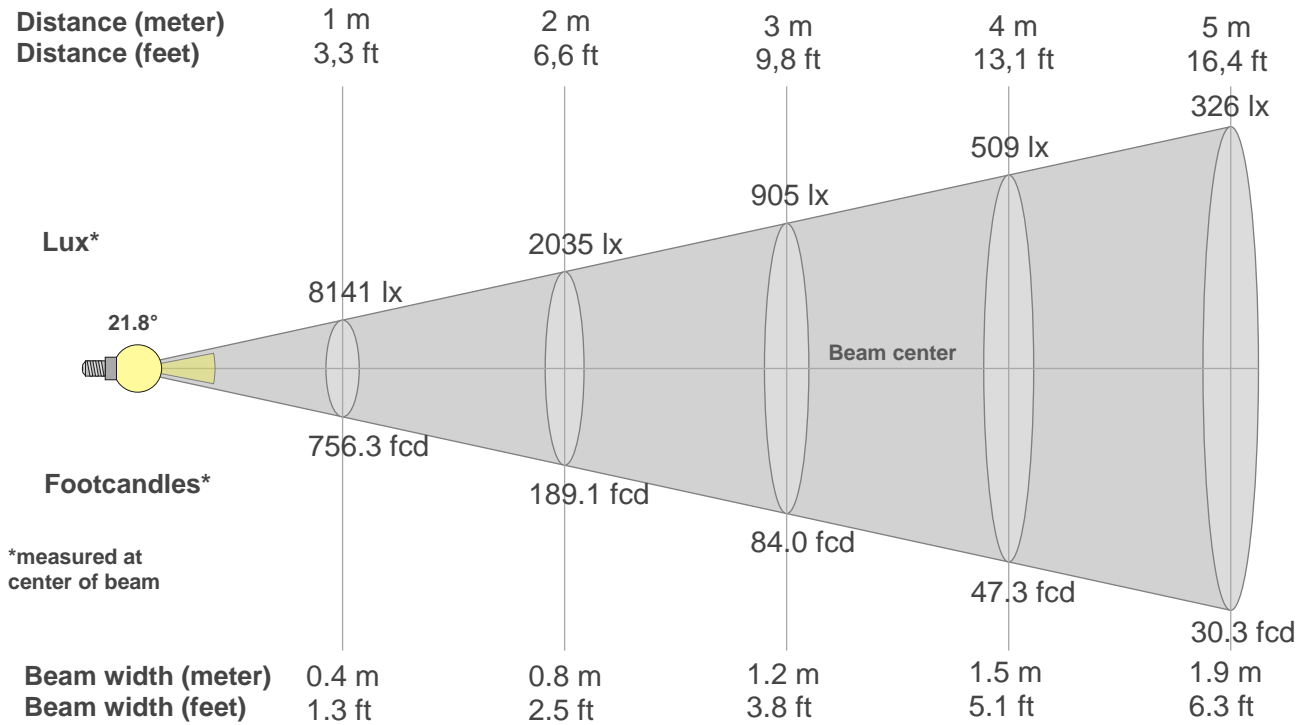
Q1	Q2	Q3	Q4	Q5	Q6	Q7	Q8	Q9	Q10	Q11	Q12	Q13	Q14	Q15
0.0	0.0	0.0	0.0	0.0	0.0	0.0	0.0	0.0	0.0	0.0	0.0	0.0	0.0	0.0

**CQS: 0.0**



## Color parameters

Color temperature	Color rendering index	Red component	Color fidelity	Color gamut	Color quality scale	Color coordinate cie 1931	Color coordinate cie 1931	Color coordinate	Color coordinate	Color deviation from black body
CCT	CRI	CRI R9	TM30 Rf	TM30 Rg	CQS	x	y	u	v	Δuv
0 K	0.0	0.0	0.0	0.0	0.0	0.150	0.029	0.197	0.058	n/a



### Beam intensities from 1-20m

1m	2m	3m	4m	5m	6m	7m	8m	9m	10m	11m	12m	13m	14m	15m	16m	17m	18m	19m	20m
3.3ft	6.6ft	9.8ft	13.1ft	16.4ft	19.7ft	23ft	26.2ft	29.5ft	32.8ft	36.1ft	39.4ft	42.7ft	45.9ft	49.2ft	52.5ft	55.8ft	59.1ft	62.3ft	65.6ft
8141lx	2035lx	905lx	509lx	326lx	226lx	166lx	127lx	101lx	81lx	67lx	57lx	48lx	42lx	36lx	32lx	28lx	25lx	23lx	20lx
756.3fcd	189.1fcd	84fcd	47.3fcd	30.3fcd	21fcd	15.4fcd	11.8fcd	9.3fcd	7.6fcd	6.3fcd	5.3fcd	4.5fcd	3.9fcd	3.4fcd	3fcd	2.6fcd	2.3fcd	2.1fcd	1.9fcd

### Intensities in 0° c-plane

0°	2°	4°	6°	8°	10°	12°	14°	16°	18°	20°	22°	24°	26°	28°	30°	32°	34°	36°	38°
8141	8035	7515	6706	5694	4605	3546	2649	1939	1415	1042	780	591	452	347	267	207	163	132	109
100%	99%	92%	82%	70%	57%	44%	33%	24%	17%	13%	10%	7%	6%	4%	3%	3%	2%	2%	1%

### Intensities in 90° c-plane

0°	2°	4°	6°	8°	10°	12°	14°	16°	18°	20°	22°	24°	26°	28°	30°	32°	34°	36°	38°
8141	8018	7479	6636	5610	4503	3488	2629	1955	1454	1089	823	626	477	364	280	218	174	142	120
100%	98%	92%	82%	69%	55%	43%	32%	24%	18%	13%	10%	8%	6%	4%	3%	3%	2%	2%	1%

### Intensities in 180° c-plane

0°	2°	4°	6°	8°	10°	12°	14°	16°	18°	20°	22°	24°	26°	28°	30°	32°	34°	36°	38°
8141	8035	7515	6706	5694	4605	3546	2649	1939	1415	1042	780	591	452	347	267	207	163	132	109
100%	99%	92%	82%	70%	57%	44%	33%	24%	17%	13%	10%	7%	6%	4%	3%	3%	2%	2%	1%

### Intensities in 270° c-plane

0°	2°	4°	6°	8°	10°	12°	14°	16°	18°	20°	22°	24°	26°	28°	30°	32°	34°	36°	38°
8141	8018	7479	6636	5610	4503	3488	2629	1955	1454	1089	823	626	477	364	280	218	174	142	120
100%	98%	92%	82%	69%	55%	43%	32%	24%	18%	13%	10%	8%	6%	4%	3%	3%	2%	2%	1%

Beam angle 50%	Field angle 10%	Cutoff angle 2,5%	Intensity ratio in 120° cone	Intensity ratio in 90° cone
21.8°	43.4°	64.3°	89.7%	85.6%