

Light efficiency:

29 Lumen/Watt

Light quality:

CRI: 0.0

Color temperature:

0 K

Output: 5833 lm

Peak: 7442 cd

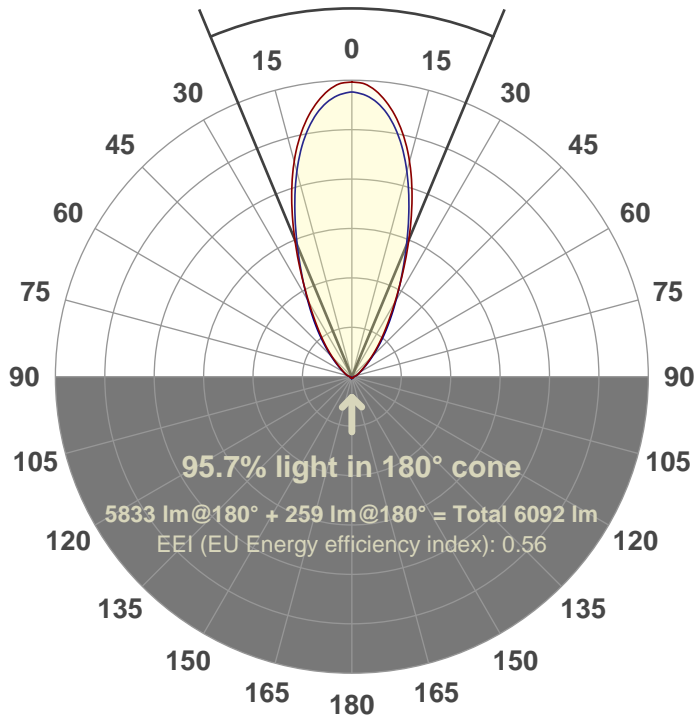
Power: 201 W

PF: 1.0



45.1°

Beam angle



Product name:

FL200-CM-RGBW-IM-40-ELV-SM-GREEN

Date and time:

27-Aug-18 12:31:46 PM

Additional Information:

LED: RGBW

FIXTURE: FL200

FILM: 250276 (40°)

COLOR-AMP: ON

STABILIZED: YES

COLOR (RGBW): GREEN

PERFORMED BY: ABDULLAH QURESHI

Color

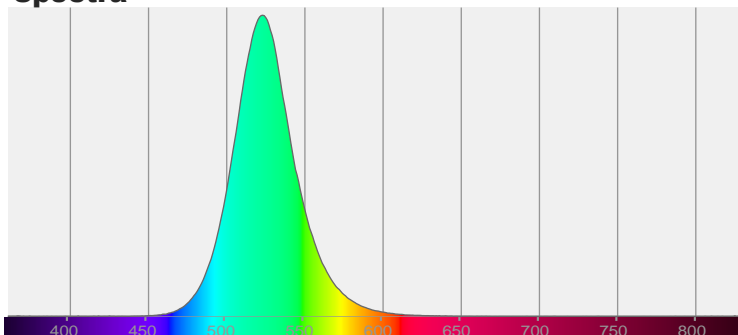


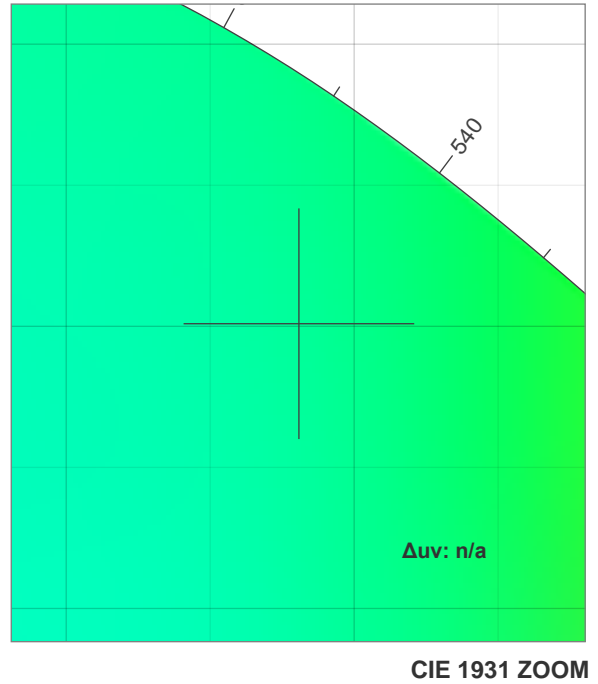
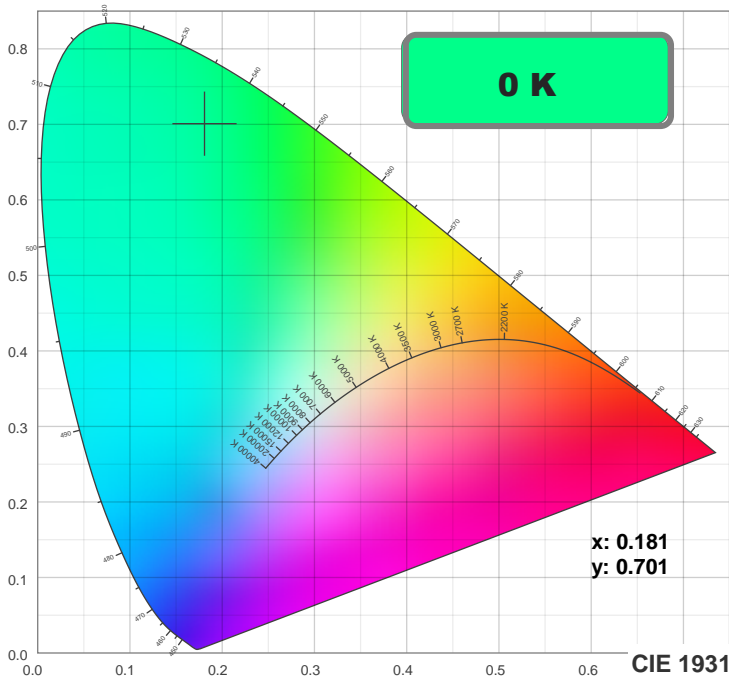
CIE 1931

x: 0.181

y: 0.701

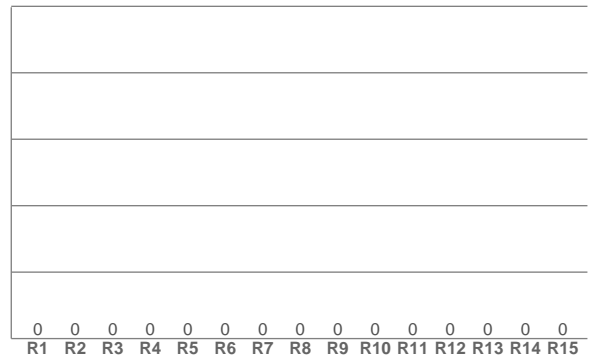
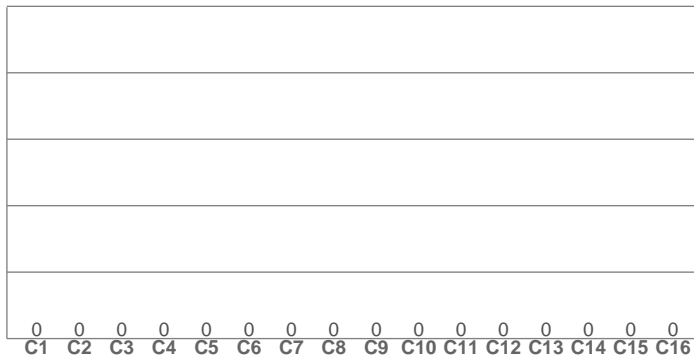
Spectra





TM30: 0.0

CRI: 0.0 (R1-R8)



CRI R values, only R1-R8 are used to calculate final CRI value

R1	R2	R3	R4	R5	R6	R7	R8	R9	R10	R11	R12	R13	R14	R15
0.0	0.0	0.0	0.0	0.0	0.0	0.0	0.0	0.0	0.0	0.0	0.0	0.0	0.0	0.0

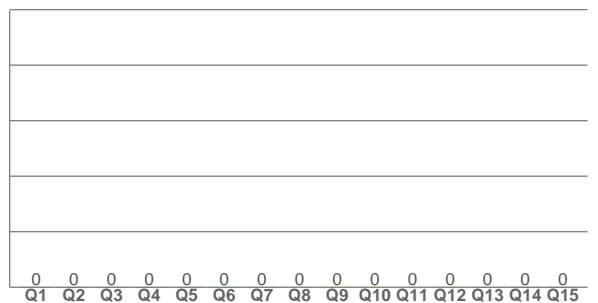
TM30 C values, 16 binned values out of total of 99 C values

C1	C2	C3	C4	C5	C6	C7	C8	C9	C10	C11	C12	C13	C14	C15	C16
0.0	0.0	0.0	0.0	0.0	0.0	0.0	0.0	0.0	0.0	0.0	0.0	0.0	0.0	0.0	0.0

CQS Q values

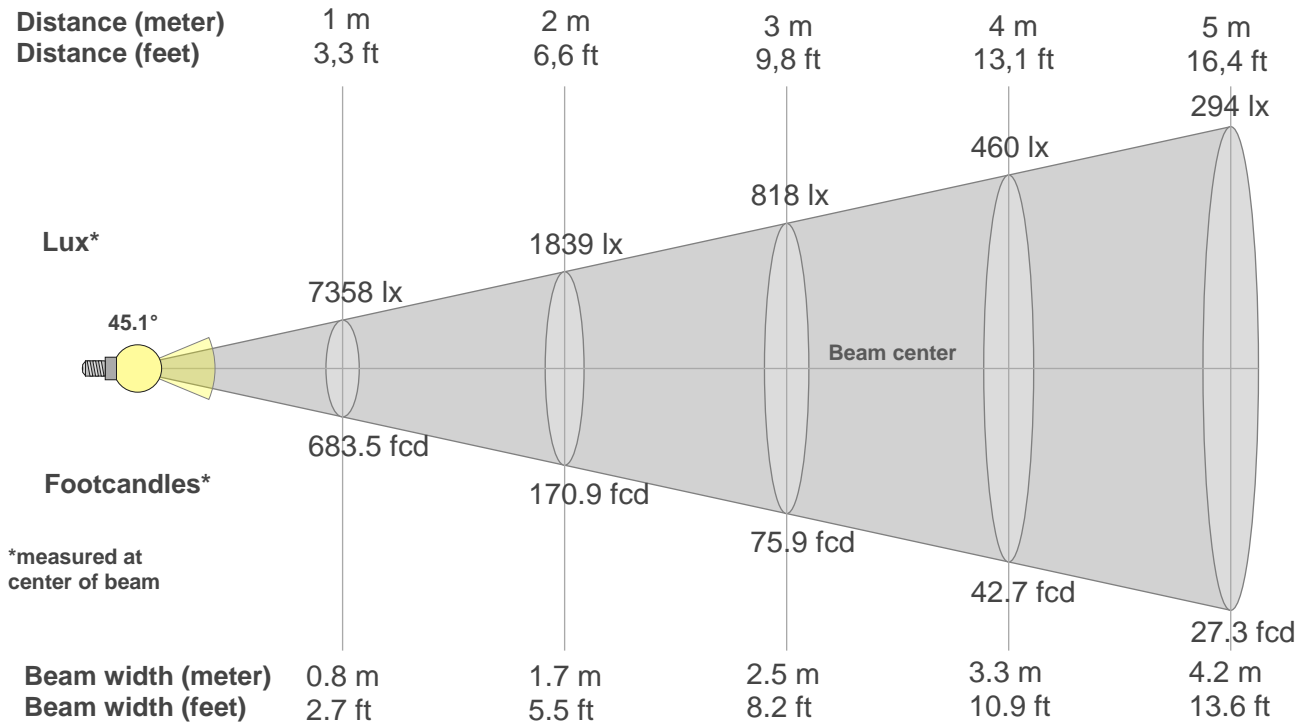
Q1	Q2	Q3	Q4	Q5	Q6	Q7	Q8	Q9	Q10	Q11	Q12	Q13	Q14	Q15
0.0	0.0	0.0	0.0	0.0	0.0	0.0	0.0	0.0	0.0	0.0	0.0	0.0	0.0	0.0

CQS: 0.0



Color parameters

Color temperature	Color rendering index	Red component	Color fidelity	Color gamut	Color quality scale	Color coordinate cie 1931	Color coordinate cie 1931	Color coordinate	Color coordinate	Color deviation from black body
CCT	CRI	CRI R9	TM30 Rf	TM30 Rg	CQS	x	y	u	v	Δuv
0 K	0.0	0.0	0.0	0.0	0.0	0.181	0.701	0.065	0.381	n/a



Beam intensities from 1-20m

1m	2m	3m	4m	5m	6m	7m	8m	9m	10m	11m	12m	13m	14m	15m	16m	17m	18m	19m	20m
3.3ft	6.6ft	9.8ft	13.1ft	16.4ft	19.7ft	23ft	26.2ft	29.5ft	32.8ft	36.1ft	39.4ft	42.7ft	45.9ft	49.2ft	52.5ft	55.8ft	59.1ft	62.3ft	65.6ft
7358lx	1839lx	818lx	460lx	294lx	204lx	150lx	115lx	91lx	74lx	61lx	51lx	44lx	38lx	33lx	29lx	25lx	23lx	20lx	18lx
683.5fcd	170.9fcd	75.9fcd	42.7fcd	27.3fcd	19fcd	13.9fcd	10.7fcd	8.4fcd	6.8fcd	5.6fcd	4.7fcd	4fcd	3.5fcd	3fcd	2.7fcd	2.4fcd	2.1fcd	1.9fcd	1.7fcd

Intensities in 0° c-plane

0°	2°	4°	6°	8°	10°	12°	14°	16°	18°	20°	22°	24°	26°	28°	30°	32°	34°	36°	38°
7358	7413	7302	7118	6877	6583	6238	5846	5398	4913	4407	3899	3408	2950	2536	2178	1875	1619	1399	1206
100%	101%	99%	97%	93%	89%	85%	79%	73%	67%	60%	53%	46%	40%	34%	30%	25%	22%	19%	16%

Intensities in 90° c-plane

0°	2°	4°	6°	8°	10°	12°	14°	16°	18°	20°	22°	24°	26°	28°	30°	32°	34°	36°	38°
7358	7140	7039	6876	6648	6354	5998	5584	5134	4662	4186	3722	3288	2892	2545	2237	1962	1716	1494	1293
100%	97%	96%	93%	90%	86%	82%	76%	70%	63%	57%	51%	45%	39%	35%	30%	27%	23%	20%	18%

Intensities in 180° c-plane

0°	2°	4°	6°	8°	10°	12°	14°	16°	18°	20°	22°	24°	26°	28°	30°	32°	34°	36°	38°
7358	7413	7302	7118	6877	6583	6238	5846	5398	4913	4407	3899	3408	2950	2536	2178	1875	1619	1399	1206
100%	101%	99%	97%	93%	89%	85%	79%	73%	67%	60%	53%	46%	40%	34%	30%	25%	22%	19%	16%

Intensities in 270° c-plane

0°	2°	4°	6°	8°	10°	12°	14°	16°	18°	20°	22°	24°	26°	28°	30°	32°	34°	36°	38°
7358	7140	7039	6876	6648	6354	5998	5584	5134	4662	4186	3722	3288	2892	2545	2237	1962	1716	1494	1293
100%	97%	96%	93%	90%	86%	82%	76%	70%	63%	57%	51%	45%	39%	35%	30%	27%	23%	20%	18%

Beam angle 50%	Field angle 10%	Cutoff angle 2,5%	Intensity ratio in 120° cone	Intensity ratio in 90° cone
45.1°	89.1°	131.4°	89.5%	80.7%