

Light efficiency:

8 Lumen/Watt

Light quality:

CRI: 0.0

Color temperature:

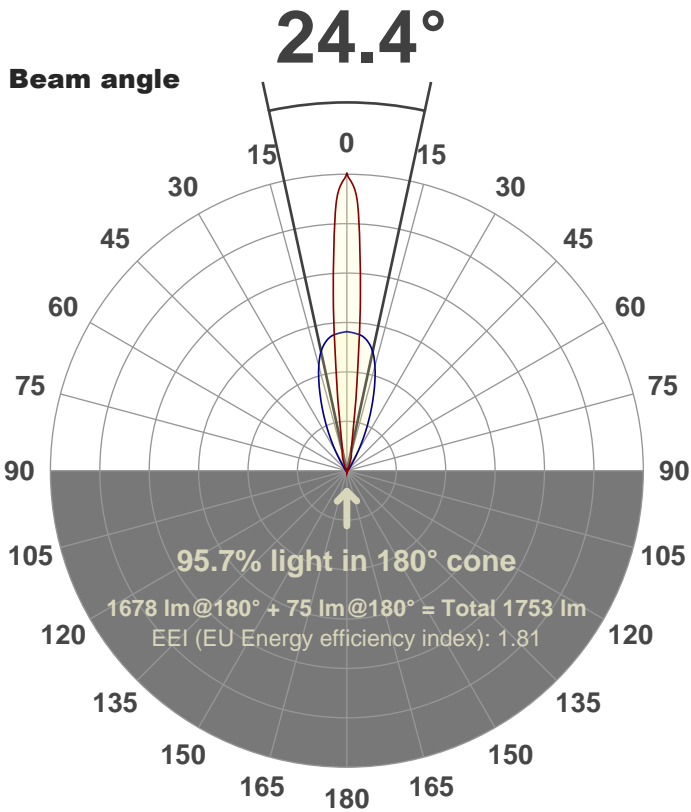
0 K

Output: 1678 lm

Peak: 9621 cd

Power: 200 W

PF: 1.0



Color



CIE 1931
x: 0.150
y: 0.030

Product name:

FL200-CM-RGBW-IM-40X10-ELV-SM-BLUE

Date and time:

27-Aug-18 7:23:23 PM

Additional Information:

LED: RGBW

FIXTURE: FL200

FILM: 250288 (40°X1°)

COLOR-AMP: ON

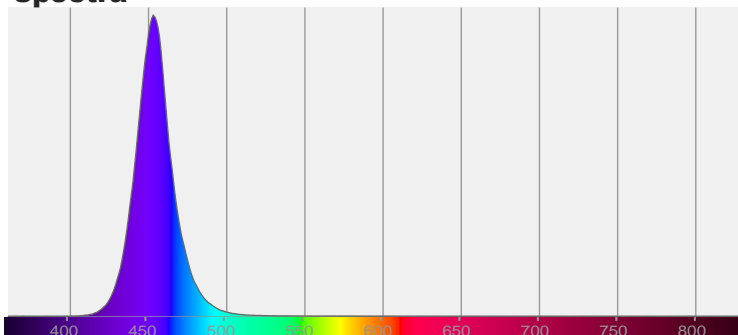
STABILIZED: YES

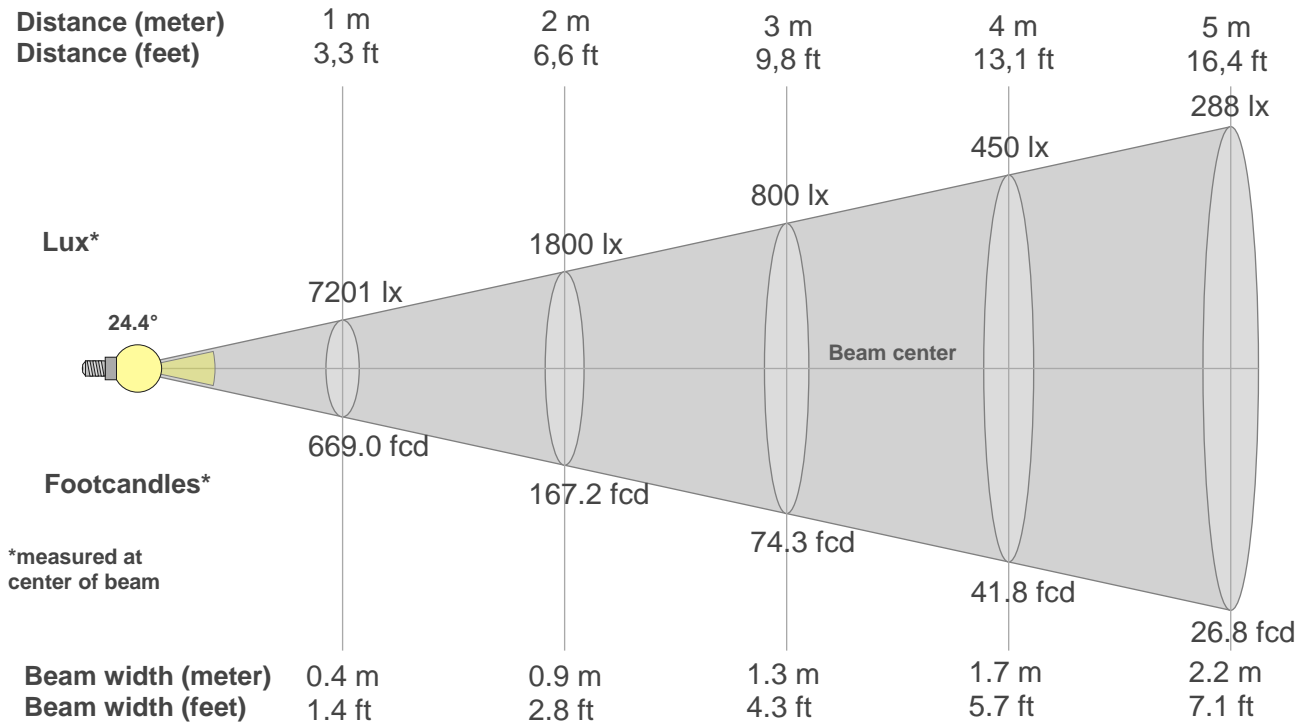
COLOR (RGBW): BLUE

FWHM: 42.2°x10.2°

PERFORMED BY: ABDULLAH QURESHI

Spectra





Beam intensities from 1-20m

1m	2m	3m	4m	5m	6m	7m	8m	9m	10m	11m	12m	13m	14m	15m	16m	17m	18m	19m	20m
3.3ft	6.6ft	9.8ft	13.1ft	16.4ft	19.7ft	23ft	26.2ft	29.5ft	32.8ft	36.1ft	39.4ft	42.7ft	45.9ft	49.2ft	52.5ft	55.8ft	59.1ft	62.3ft	65.6ft
7201lx	1800lx	800lx	450lx	288lx	200lx	147lx	113lx	89lx	72lx	60lx	50lx	43lx	37lx	32lx	28lx	25lx	22lx	20lx	18lx
669fcd	167.2fcd	74.3fcd	41.8fcd	26.8fcd	18.6fcd	13.7fcd	10.5fcd	8.3fcd	6.7fcd	5.5fcd	4.6fcd	4fcd	3.4fcd	3fcd	2.6fcd	2.3fcd	2.1fcd	1.9fcd	1.7fcd

Intensities in 0° c-plane

0°	2°	4°	6°	8°	10°	12°	14°	16°	18°	20°	22°	24°	26°	28°	30°	32°	34°	36°	38°
7201	8818	6323	3627	1863	1033	718	600	528	444	338	241	179	140	110	89	74	64	56	52
100%	122%	88%	50%	26%	14%	10%	8%	7%	6%	5%	3%	2%	2%	2%	1%	1%	1%	1%	1%

Intensities in 90° c-plane

0°	2°	4°	6°	8°	10°	12°	14°	16°	18°	20°	22°	24°	26°	28°	30°	32°	34°	36°	38°
7201	4503	4471	4426	4335	4191	3985	3697	3331	2919	2495	2083	1691	1329	1004	733	523	379	282	218
100%	63%	62%	61%	60%	58%	55%	51%	46%	41%	35%	29%	23%	18%	14%	10%	7%	5%	4%	3%

Intensities in 180° c-plane

0°	2°	4°	6°	8°	10°	12°	14°	16°	18°	20°	22°	24°	26°	28°	30°	32°	34°	36°	38°
7201	8818	6323	3627	1863	1033	718	600	528	444	338	241	179	140	110	89	74	64	56	52
100%	122%	88%	50%	26%	14%	10%	8%	7%	6%	5%	3%	2%	2%	2%	1%	1%	1%	1%	1%

Intensities in 270° c-plane

0°	2°	4°	6°	8°	10°	12°	14°	16°	18°	20°	22°	24°	26°	28°	30°	32°	34°	36°	38°
7201	4503	4471	4426	4335	4191	3985	3697	3331	2919	2495	2083	1691	1329	1004	733	523	379	282	218
100%	63%	62%	61%	60%	58%	55%	51%	46%	41%	35%	29%	23%	18%	14%	10%	7%	5%	4%	3%

Beam angle 50%	Field angle 10%	Cutoff angle 2,5%	Intensity ratio in 120° cone	Intensity ratio in 90° cone
24.4°	40.3°	64.3°	90.2%	86.1%