

Light efficiency:

28 Lumen/Watt

Light quality:

CRI: 0.0

Color temperature:

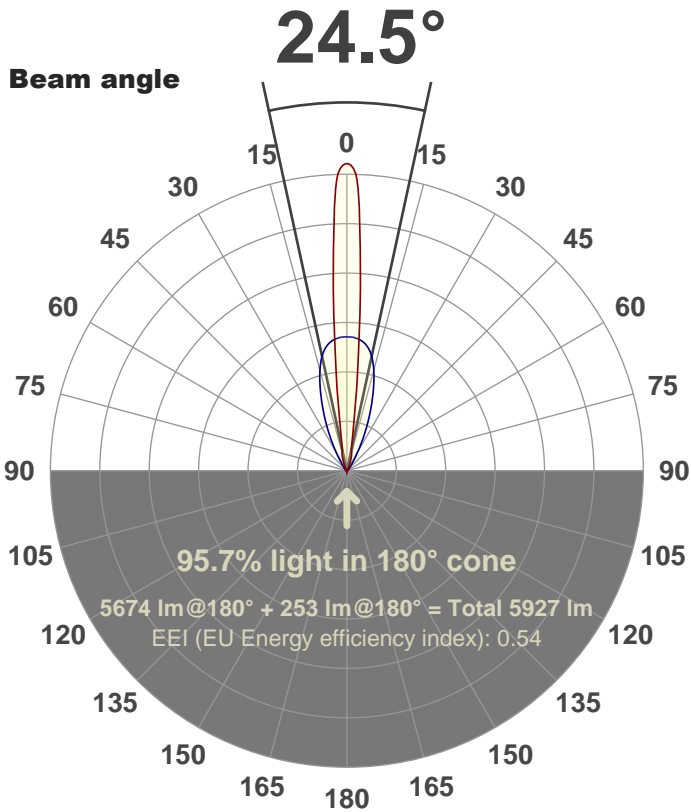
0 K

Output: 5674 lm

Peak: 32694 cd

Power: 201 W

PF: 1.0



Color



CIE 1931
x: 0.182
y: 0.701

Product name:

FL200-CM-RGBW-IM-40X10-ELV-SM-GREEN

Date and time:

27-Aug-18 7:14:27 PM

Additional Information:

LED: RGBW

FIXTURE: FL200

FILM: 250288 (40°X1°)

COLOR-AMP: ON

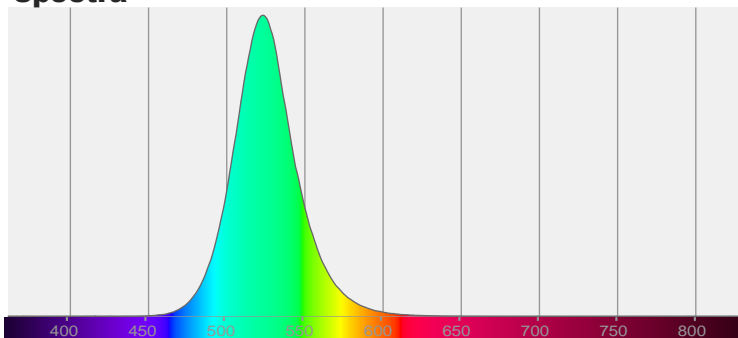
STABILIZED: YES

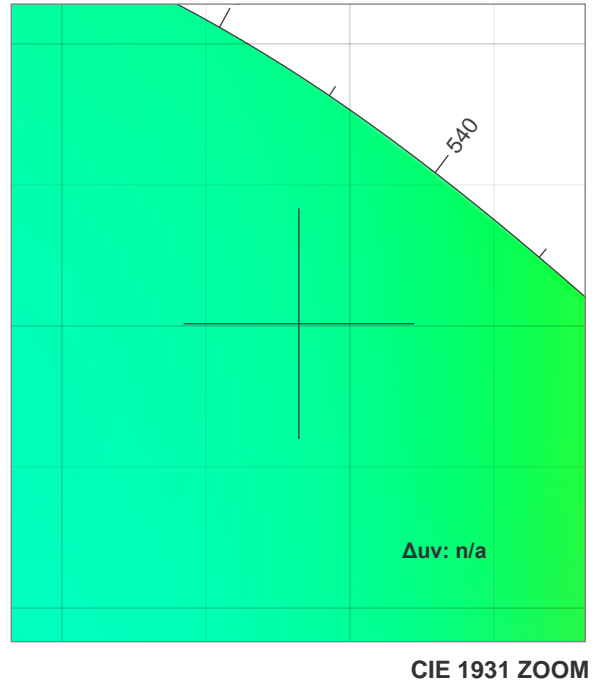
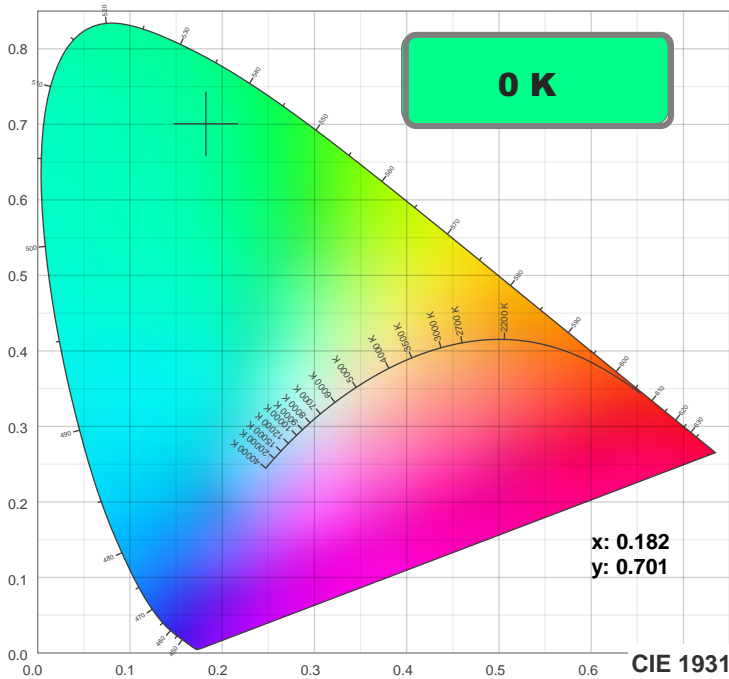
COLOR (RGBW): GREEN

FWHM: 42.1°x10.2°

PERFORMED BY: ABDULLAH QURESHI

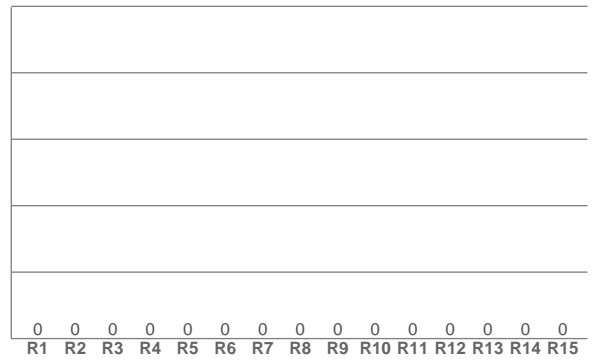
Spectra





TM30: 0.0

CRI: 0.0 (R1-R8)



CRI R values, only R1-R8 are used to calculate final CRI value

R1	R2	R3	R4	R5	R6	R7	R8	R9	R10	R11	R12	R13	R14	R15
0.0	0.0	0.0	0.0	0.0	0.0	0.0	0.0	0.0	0.0	0.0	0.0	0.0	0.0	0.0

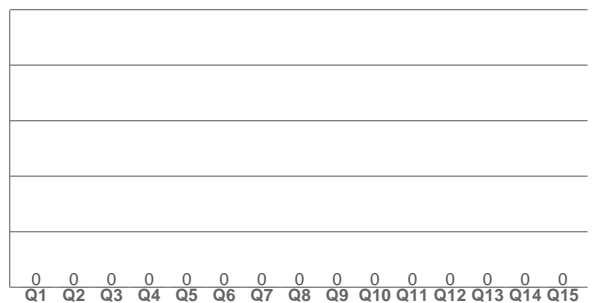
TM30 C values, 16 binned values out of total of 99 C values

C1	C2	C3	C4	C5	C6	C7	C8	C9	C10	C11	C12	C13	C14	C15	C16
0.0	0.0	0.0	0.0	0.0	0.0	0.0	0.0	0.0	0.0	0.0	0.0	0.0	0.0	0.0	0.0

CQS Q values

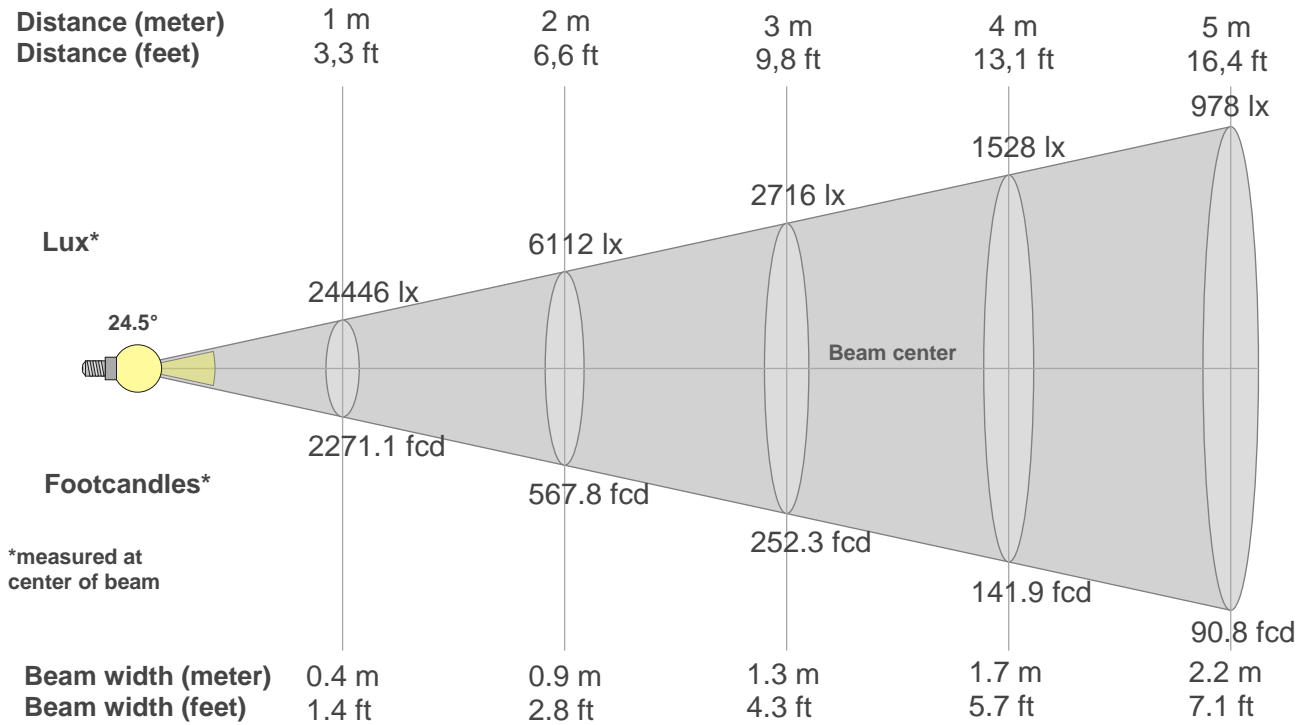
Q1	Q2	Q3	Q4	Q5	Q6	Q7	Q8	Q9	Q10	Q11	Q12	Q13	Q14	Q15
0.0	0.0	0.0	0.0	0.0	0.0	0.0	0.0	0.0	0.0	0.0	0.0	0.0	0.0	0.0

CQS: 0.0



Color parameters

Color temperature	Color rendering index	Red component	Color fidelity	Color gamut	Color quality scale	Color coordinate cie 1931	Color coordinate cie 1931	Color coordinate	Color coordinate	Color deviation from black body
CCT	CRI	CRI R9	TM30 Rf	TM30 Rg	CQS	x	y	u	v	Δuv
0 K	0.0	0.0	0.0	0.0	0.0	0.182	0.701	0.066	0.381	n/a



Beam intensities from 1-20m

1m	2m	3m	4m	5m	6m	7m	8m	9m	10m	11m	12m	13m	14m	15m	16m	17m	18m	19m	20m
3.3ft	6.6ft	9.8ft	13.1ft	16.4ft	19.7ft	23ft	26.2ft	29.5ft	32.8ft	36.1ft	39.4ft	42.7ft	45.9ft	49.2ft	52.5ft	55.8ft	59.1ft	62.3ft	65.6ft
24446lx	6112lx	2716lx	1528lx	978lx	679lx	499lx	382lx	302lx	244lx	202lx	170lx	145lx	125lx	109lx	95lx	85lx	75lx	68lx	61lx
2271.1fcd	567.8fcd	252.3fcd	141.9fcd	90.8fcd	63.1fcd	46.3fcd	35.5fcd	28fcd	22.7fcd	18.8fcd	15.8fcd	13.4fcd	11.6fcd	10.1fcd	8.9fcd	7.9fcd	7fcd	6.3fcd	5.7fcd

Intensities in 0° c-plane

0°	2°	4°	6°	8°	10°	12°	14°	16°	18°	20°	22°	24°	26°	28°	30°	32°	34°	36°	38°
24.4K	30.9K	21.0K	11.6K	6.0K	3.4K	2.5K	2.1K	1.8K	1.5K	1.2K	0.8K	0.6K	0.5K	0.4K	0.3K	0.3K	0.2K	0.2K	0.2K
100%	127%	86%	47%	24%	14%	10%	8%	8%	6%	5%	3%	3%	2%	2%	1%	1%	1%	1%	1%

Intensities in 90° c-plane

0°	2°	4°	6°	8°	10°	12°	14°	16°	18°	20°	22°	24°	26°	28°	30°	32°	34°	36°	38°
24.4K	14.4K	14.3K	14.1K	13.9K	13.4K	12.7K	11.7K	10.6K	9.3K	7.9K	6.6K	5.4K	4.2K	3.2K	2.3K	1.7K	1.3K	0.9K	0.7K
100%	59%	59%	58%	57%	55%	52%	48%	43%	38%	32%	27%	22%	17%	13%	10%	7%	5%	4%	3%

Intensities in 180° c-plane

0°	2°	4°	6°	8°	10°	12°	14°	16°	18°	20°	22°	24°	26°	28°	30°	32°	34°	36°	38°
24.4K	30.9K	21.0K	11.6K	6.0K	3.4K	2.5K	2.1K	1.8K	1.5K	1.2K	0.8K	0.6K	0.5K	0.4K	0.3K	0.3K	0.2K	0.2K	0.2K
100%	127%	86%	47%	24%	14%	10%	8%	8%	6%	5%	3%	3%	2%	2%	1%	1%	1%	1%	1%

Intensities in 270° c-plane

0°	2°	4°	6°	8°	10°	12°	14°	16°	18°	20°	22°	24°	26°	28°	30°	32°	34°	36°	38°
24.4K	14.4K	14.3K	14.1K	13.9K	13.4K	12.7K	11.7K	10.6K	9.3K	7.9K	6.6K	5.4K	4.2K	3.2K	2.3K	1.7K	1.3K	0.9K	0.7K
100%	59%	59%	58%	57%	55%	52%	48%	43%	38%	32%	27%	22%	17%	13%	10%	7%	5%	4%	3%

Beam angle 50%	Field angle 10%	Cutoff angle 2,5%	Intensity ratio in 120° cone	Intensity ratio in 90° cone
24.5°	40.3°	65°	90.1%	86.0%