

Light efficiency:

29 Lumen/Watt

Light quality:

CRI: 0.0

Color temperature:

0 K

Output: 5885 lm

Peak: 5153 cd

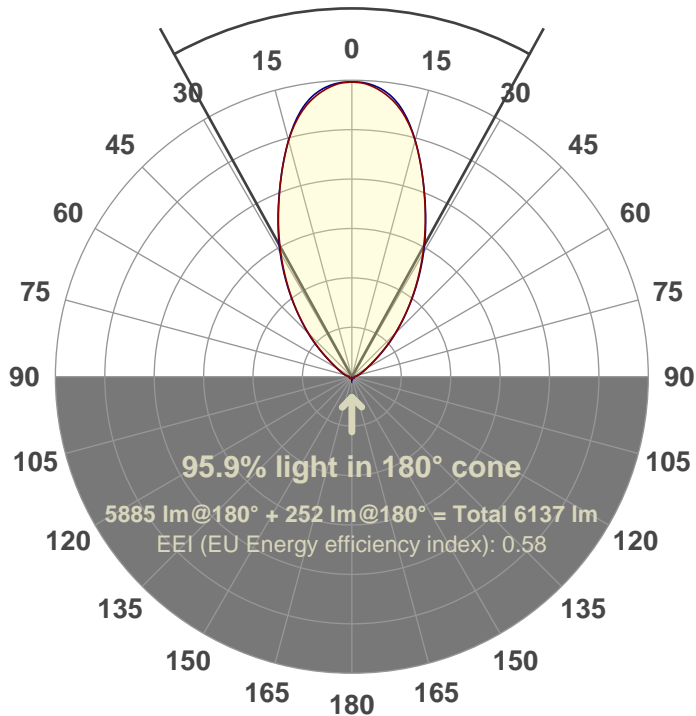
Power: 201 W

PF: 1.0



57.7°

Beam angle



Product name:

FL200-CM-RGBW-IM-60-ELV-SM-GREEN

Date and time:

27-Aug-18 1:06:28 PM

Additional Information:

LED: RGBW

FIXTURE: FL200

FILM: 250277 (60°)

COLOR-AMP: ON

STABILIZED: YES

COLOR (RGBW): GREEN

PERFORMED BY: ABDULLAH QURESHI

Color

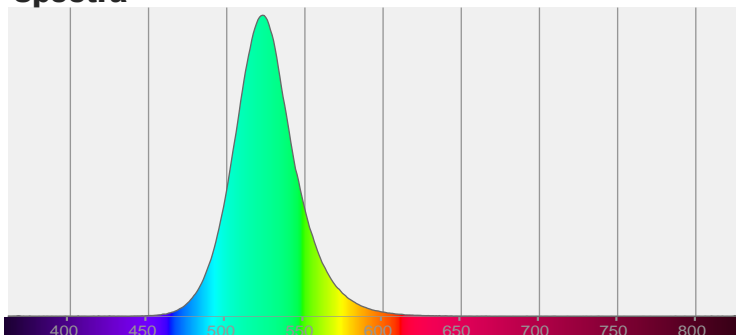


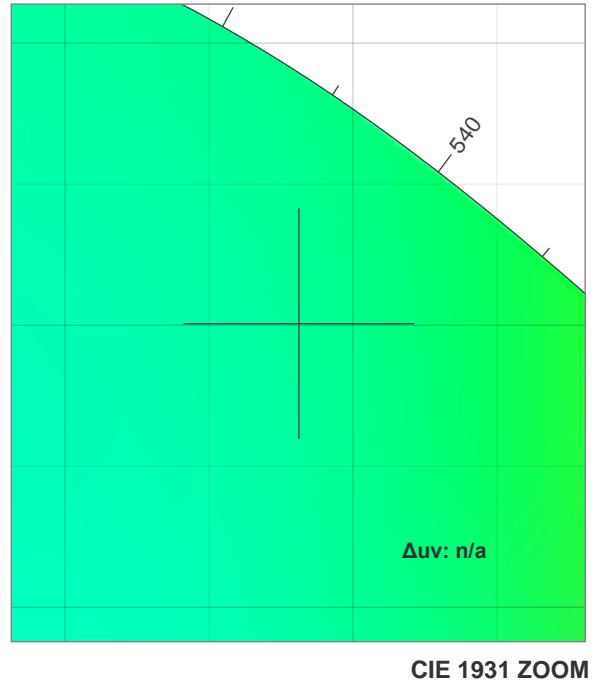
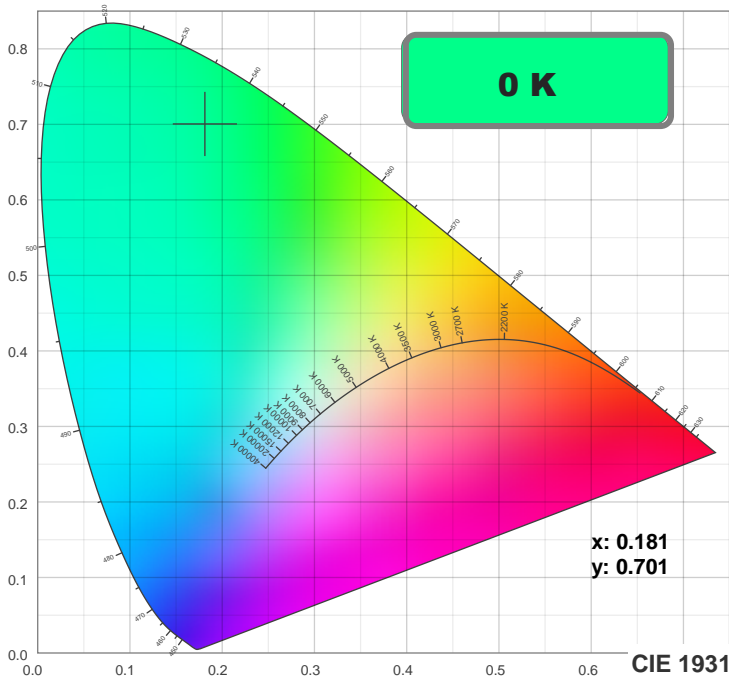
CIE 1931

x: 0.181

y: 0.701

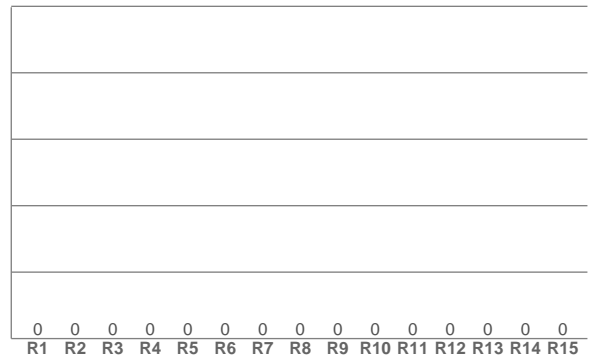
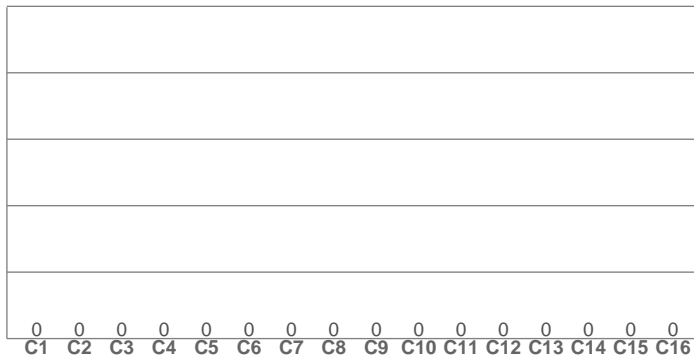
Spectra





TM30: 0.0

CRI: 0.0 (R1-R8)



CRI R values, only R1-R8 are used to calculate final CRI value

R1	R2	R3	R4	R5	R6	R7	R8	R9	R10	R11	R12	R13	R14	R15
0.0	0.0	0.0	0.0	0.0	0.0	0.0	0.0	0.0	0.0	0.0	0.0	0.0	0.0	0.0

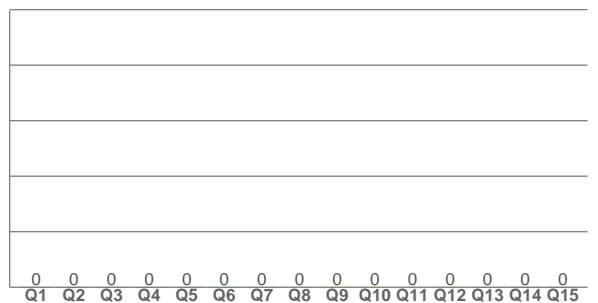
TM30 C values, 16 binned values out of total of 99 C values

C1	C2	C3	C4	C5	C6	C7	C8	C9	C10	C11	C12	C13	C14	C15	C16
0.0	0.0	0.0	0.0	0.0	0.0	0.0	0.0	0.0	0.0	0.0	0.0	0.0	0.0	0.0	0.0

CQS Q values

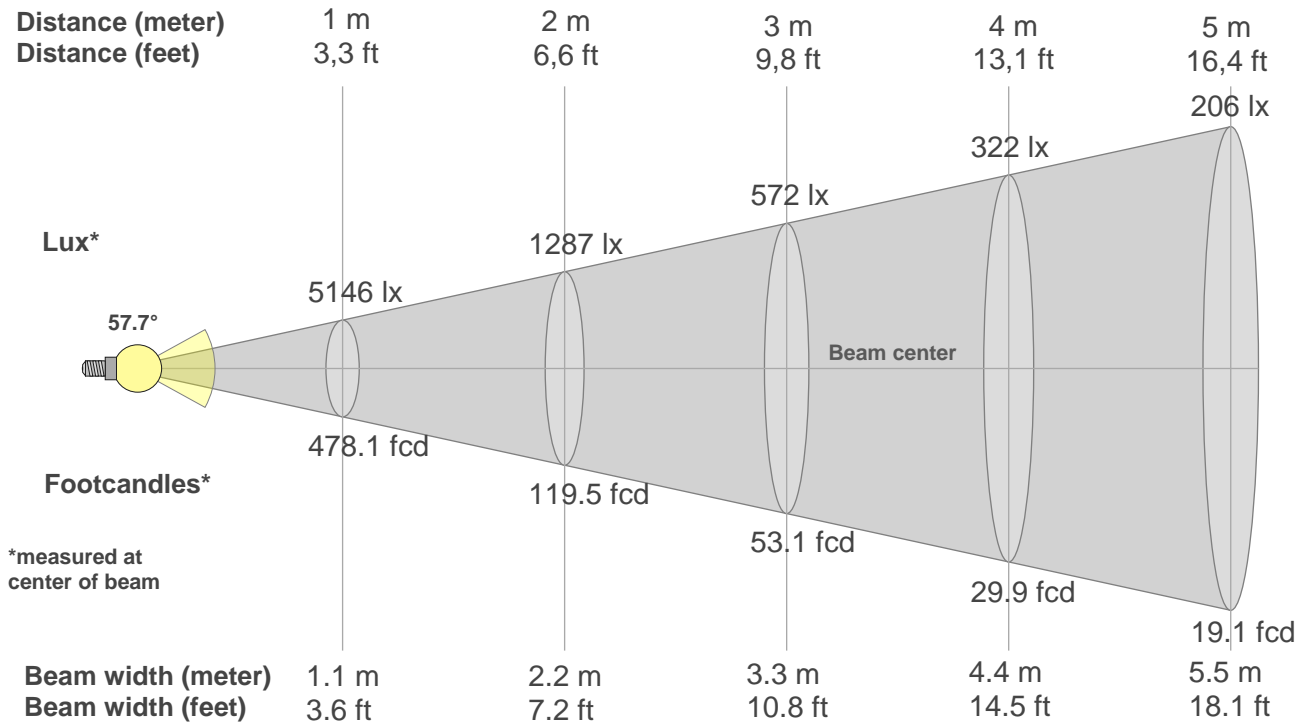
Q1	Q2	Q3	Q4	Q5	Q6	Q7	Q8	Q9	Q10	Q11	Q12	Q13	Q14	Q15
0.0	0.0	0.0	0.0	0.0	0.0	0.0	0.0	0.0	0.0	0.0	0.0	0.0	0.0	0.0

CQS: 0.0



Color parameters

Color temperature	Color rendering index	Red component	Color fidelity	Color gamut	Color quality scale	Color coordinate cie 1931	Color coordinate cie 1931	Color coordinate	Color coordinate	Color deviation from black body
CCT	CRI	CRI R9	TM30 Rf	TM30 Rg	CQS	x	y	u	v	Δuv
0 K	0.0	0.0	0.0	0.0	0.0	0.181	0.701	0.066	0.381	n/a



Beam intensities from 1-20m

1m	2m	3m	4m	5m	6m	7m	8m	9m	10m	11m	12m	13m	14m	15m	16m	17m	18m	19m	20m
3.3ft	6.6ft	9.8ft	13.1ft	16.4ft	19.7ft	23ft	26.2ft	29.5ft	32.8ft	36.1ft	39.4ft	42.7ft	45.9ft	49.2ft	52.5ft	55.8ft	59.1ft	62.3ft	65.6ft
5146lx	1287lx	572lx	322lx	206lx	143lx	105lx	80lx	64lx	51lx	43lx	36lx	30lx	26lx	23lx	20lx	18lx	16lx	14lx	13lx
478.1fcd	119.5fcd	53.1fcd	29.9fcd	19.1fcd	13.3fcd	9.8fcd	7.5fcd	5.9fcd	4.8fcd	4fcd	3.3fcd	2.8fcd	2.4fcd	2.1fcd	1.9fcd	1.7fcd	1.5fcd	1.3fcd	1.2fcd

Intensities in 0° c-plane

0°	5°	10°	15°	20°	25°	30°	35°	40°	45°	50°	55°	60°	65°	70°	75°	80°	85°	90°	95°
5146	5051	4765	4271	3641	3039	2483	1963	1489	1069	713	452	304	218	160	117	82	55	43	0
100%	98%	93%	83%	71%	59%	48%	38%	29%	21%	14%	9%	6%	4%	3%	2%	2%	1%	1%	0%

Intensities in 90° c-plane

0°	5°	10°	15°	20°	25°	30°	35°	40°	45°	50°	55°	60°	65°	70°	75°	80°	85°	90°	95°
5146	5081	4805	4275	3641	3052	2505	1981	1497	1086	730	465	312	225	165	120	85	57	46	0
100%	99%	93%	83%	71%	59%	49%	38%	29%	21%	14%	9%	6%	4%	3%	2%	2%	1%	1%	0%

Intensities in 180° c-plane

0°	5°	10°	15°	20°	25°	30°	35°	40°	45°	50°	55°	60°	65°	70°	75°	80°	85°	90°	95°
5146	5051	4765	4271	3641	3039	2483	1963	1489	1069	713	452	304	218	160	117	82	55	43	0
100%	98%	93%	83%	71%	59%	48%	38%	29%	21%	14%	9%	6%	4%	3%	2%	2%	1%	1%	0%

Intensities in 270° c-plane

0°	5°	10°	15°	20°	25°	30°	35°	40°	45°	50°	55°	60°	65°	70°	75°	80°	85°	90°	95°
5146	5081	4805	4275	3641	3052	2505	1981	1497	1086	730	465	312	225	165	120	85	57	46	0
100%	99%	93%	83%	71%	59%	49%	38%	29%	21%	14%	9%	6%	4%	3%	2%	2%	1%	1%	0%

Beam angle 50%	Field angle 10%	Cutoff angle 2,5%	Intensity ratio in 120° cone	Intensity ratio in 90° cone
57.7°	107.1°	147.3°	89.2%	76.6%