

**Light efficiency:**

**8 Lumen/Watt**

**Light quality:**

**CRI: 0.0**

**Color temperature:**

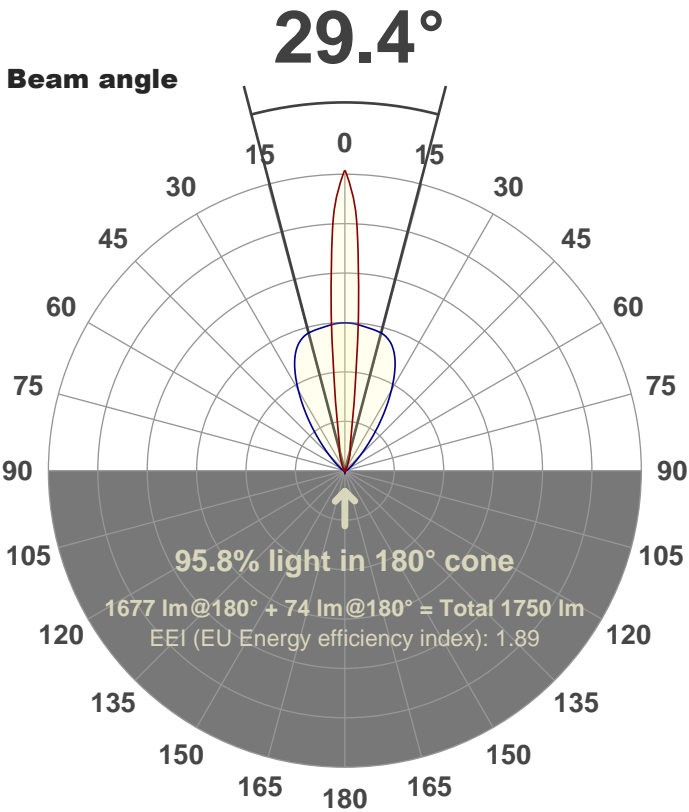
**0 K**

**Output: 1677 lm**

**Peak: 6227 cd**

**Power: 204 W**

**PF: 1.0**



**Color**



**CIE 1931**  
**x: 0.150**  
**y: 0.029**

**Product name:**

**FL200-CM-RGBW-IM-60X10-ELV-SM-BLUE**

**Date and time:**

**24-Aug-18 2:42:40 PM**

**Additional Information:**

**LED: RGBW**

**FIXTURE: FL200**

**FILM: 250287 (60°X10°)**

**COLOR-AMP: ON**

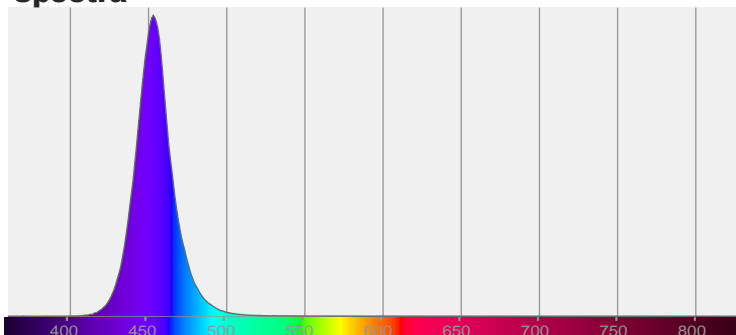
**STABILIZED: YES**

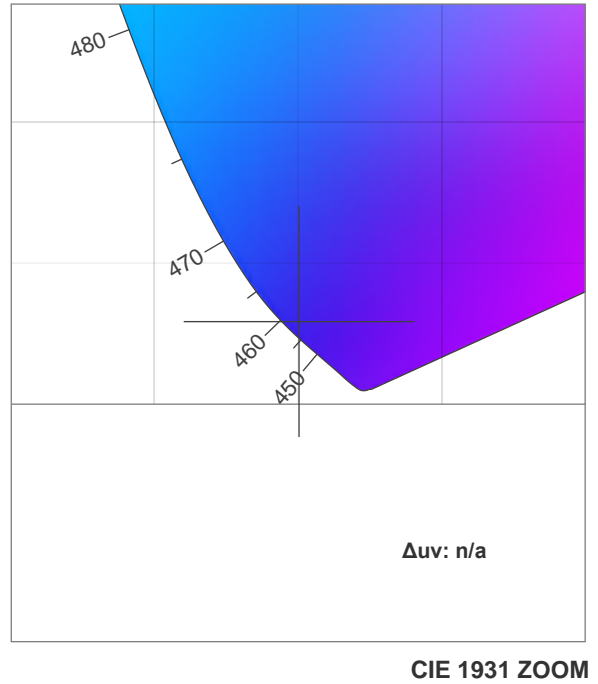
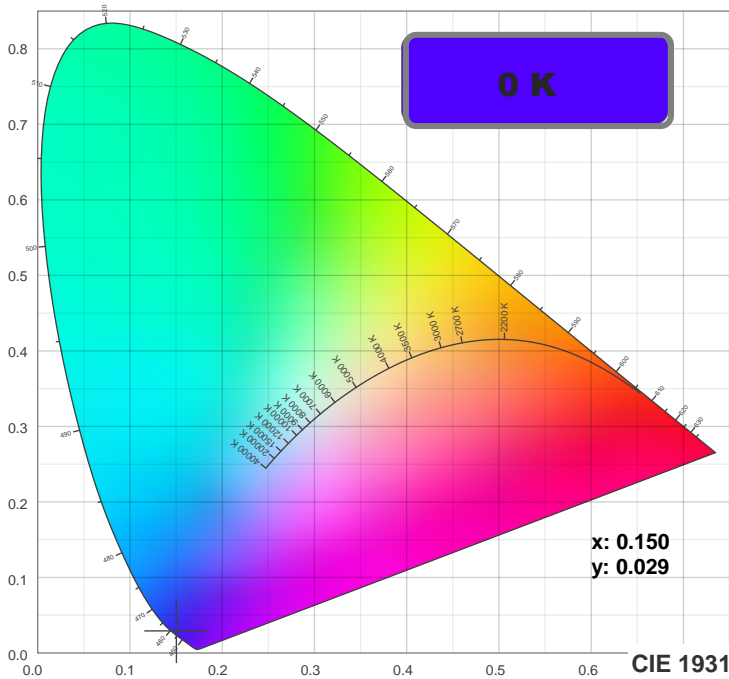
**COLOR (RGBW): BLUE**

**FWHM: 66.7°X10.5°**

**PERFORMED BY: ABDULLAH QURESHI**

**Spectra**





**TM30: 0.0**

**CRI: 0.0 (R1-R8)**



**CRI R values, only R1-R8 are used to calculate final CRI value**

R1	R2	R3	R4	R5	R6	R7	R8	R9	R10	R11	R12	R13	R14	R15
0.0	0.0	0.0	0.0	0.0	0.0	0.0	0.0	0.0	0.0	0.0	0.0	0.0	0.0	0.0

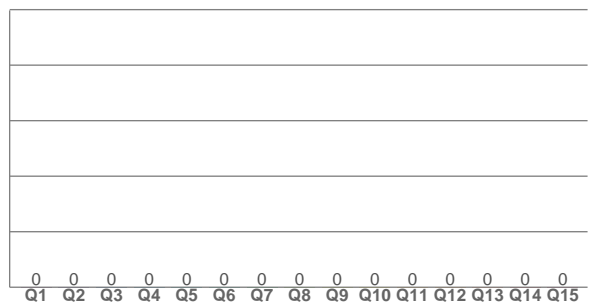
**TM30 C values, 16 binned values out of total of 99 C values**

C1	C2	C3	C4	C5	C6	C7	C8	C9	C10	C11	C12	C13	C14	C15	C16
0.0	0.0	0.0	0.0	0.0	0.0	0.0	0.0	0.0	0.0	0.0	0.0	0.0	0.0	0.0	0.0

**CQS Q values**

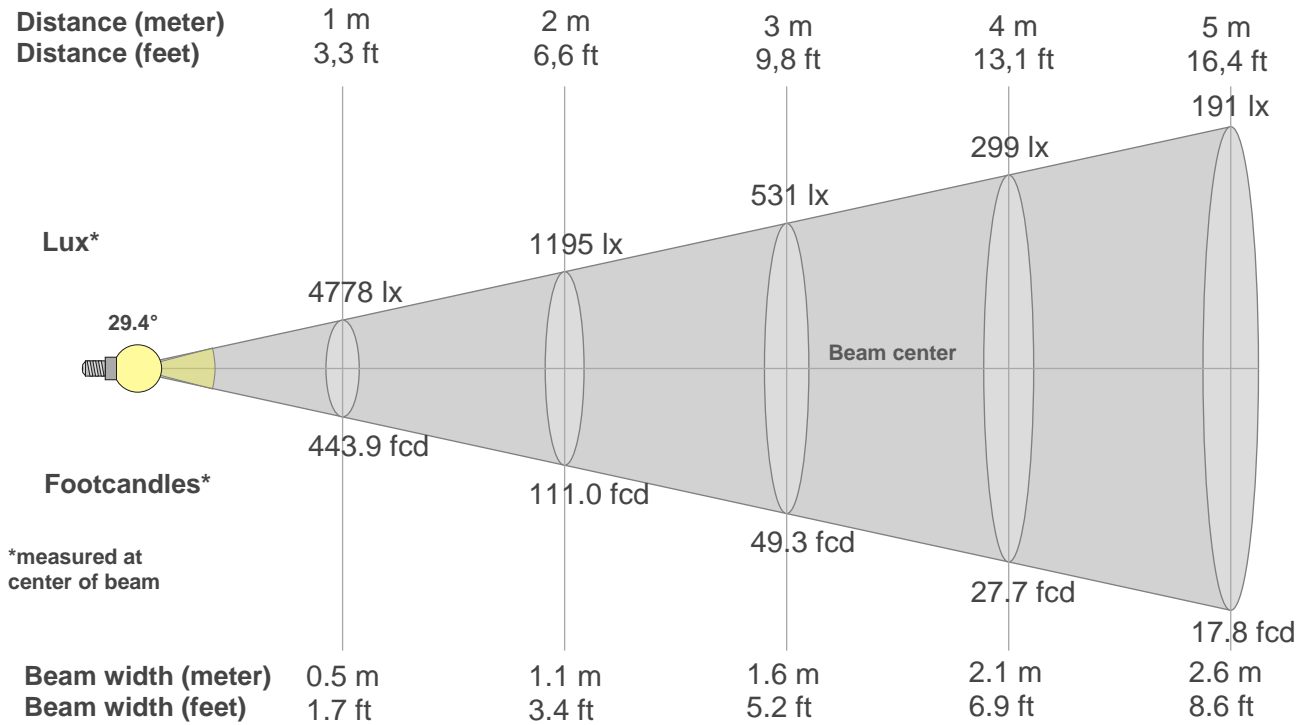
Q1	Q2	Q3	Q4	Q5	Q6	Q7	Q8	Q9	Q10	Q11	Q12	Q13	Q14	Q15
0.0	0.0	0.0	0.0	0.0	0.0	0.0	0.0	0.0	0.0	0.0	0.0	0.0	0.0	0.0

**CQS: 0.0**



## Color parameters

Color temperature	Color rendering index	Red component	Color fidelity	Color gamut	Color quality scale	Color coordinate cie 1931	Color coordinate cie 1931	Color coordinate	Color coordinate	Color deviation from black body
CCT	CRI	CRI R9	TM30 Rf	TM30 Rg	CQS	x	y	u	v	$\Delta uv$
0 K	0.0	0.0	0.0	0.0	0.0	0.150	0.029	0.197	0.058	n/a



### Beam intensities from 1-20m

1m	2m	3m	4m	5m	6m	7m	8m	9m	10m	11m	12m	13m	14m	15m	16m	17m	18m	19m	20m
3.3ft	6.6ft	9.8ft	13.1ft	16.4ft	19.7ft	23ft	26.2ft	29.5ft	32.8ft	36.1ft	39.4ft	42.7ft	45.9ft	49.2ft	52.5ft	55.8ft	59.1ft	62.3ft	65.6ft
4778lx	1195lx	531lx	299lx	191lx	133lx	98lx	75lx	59lx	48lx	39lx	33lx	28lx	24lx	21lx	19lx	17lx	15lx	13lx	12lx
443.9fcd	111fcd	49.3fcd	27.7fcd	17.8fcd	12.3fcd	9.1fcd	6.9fcd	5.5fcd	4.4fcd	3.7fcd	3.1fcd	2.6fcd	2.3fcd	2fcd	1.7fcd	1.5fcd	1.4fcd	1.2fcd	1.1fcd

### Intensities in 0° c-plane

0°	2°	4°	6°	8°	10°	12°	14°	16°	18°	20°	22°	24°	26°	28°	30°	32°	34°	36°	38°
4778	5591	4153	2544	1389	804	563	465	404	339	263	198	154	125	102	85	72	64	58	53
100%	117%	87%	53%	29%	17%	12%	10%	8%	7%	5%	4%	3%	3%	2%	2%	2%	1%	1%	1%

### Intensities in 90° c-plane

0°	2°	4°	6°	8°	10°	12°	14°	16°	18°	20°	22°	24°	26°	28°	30°	32°	34°	36°	38°
4778	3120	3109	3091	3071	3054	3038	3018	2988	2934	2856	2743	2595	2411	2199	1968	1730	1492	1259	1038
100%	65%	65%	65%	64%	64%	64%	63%	63%	61%	60%	57%	54%	50%	46%	41%	36%	31%	26%	22%

### Intensities in 180° c-plane

0°	2°	4°	6°	8°	10°	12°	14°	16°	18°	20°	22°	24°	26°	28°	30°	32°	34°	36°	38°
4778	5591	4153	2544	1389	804	563	465	404	339	263	198	154	125	102	85	72	64	58	53
100%	117%	87%	53%	29%	17%	12%	10%	8%	7%	5%	4%	3%	3%	2%	2%	2%	1%	1%	1%

### Intensities in 270° c-plane

0°	2°	4°	6°	8°	10°	12°	14°	16°	18°	20°	22°	24°	26°	28°	30°	32°	34°	36°	38°
4778	3120	3109	3091	3071	3054	3038	3018	2988	2934	2856	2743	2595	2411	2199	1968	1730	1492	1259	1038
100%	65%	65%	65%	64%	64%	64%	63%	63%	61%	60%	57%	54%	50%	46%	41%	36%	31%	26%	22%

Beam angle 50%	Field angle 10%	Cutoff angle 2,5%	Intensity ratio in 120° cone	Intensity ratio in 90° cone
29.4°	49.4°	80.2°	90.1%	84.0%