

Light efficiency:

31 Lumen/Watt

Light quality:

CRI: 0.0

Color temperature:

0 K

Output: 6215 lm

Peak: 9542 cd

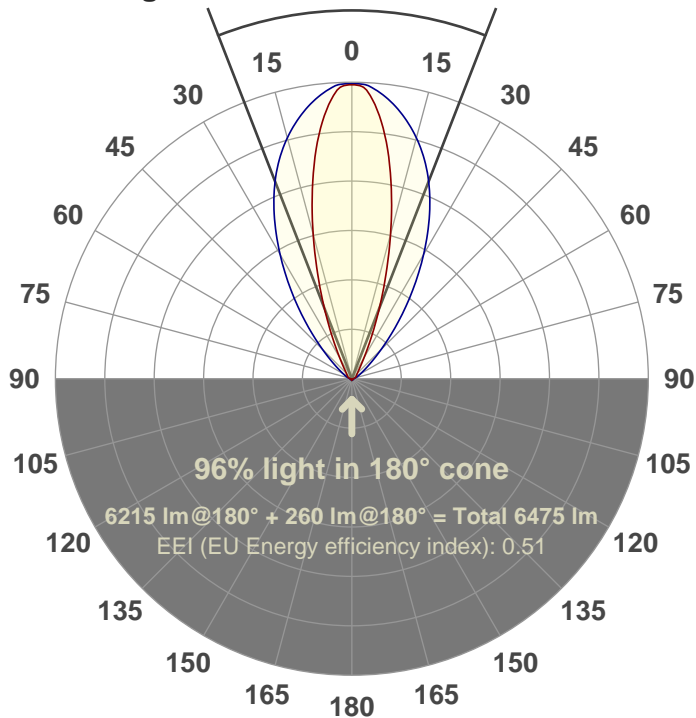
Power: 201 W

PF: 1.0



42.5°

Beam angle



Color



CIE 1931
x: 0.181
y: 0.701

Product name:

FL200-CM-RGBW-IM-60X30-ELV-SM-GREEN

Date and time:

24-Aug-18 3:27:44 PM

Additional Information:

LED: RGBW

FIXTURE: FL200

FILM: 250286 (60°X30°)

COLOR-AMP: ON

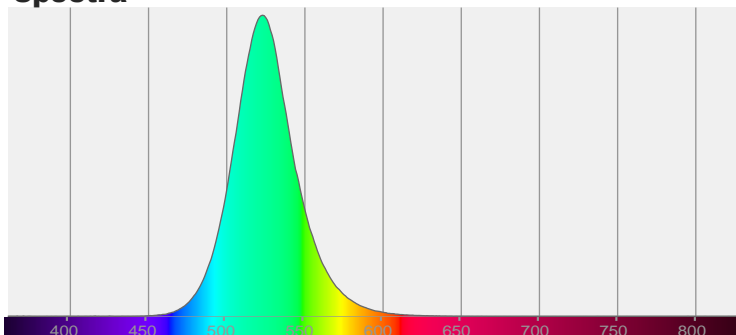
STABILIZED: YES

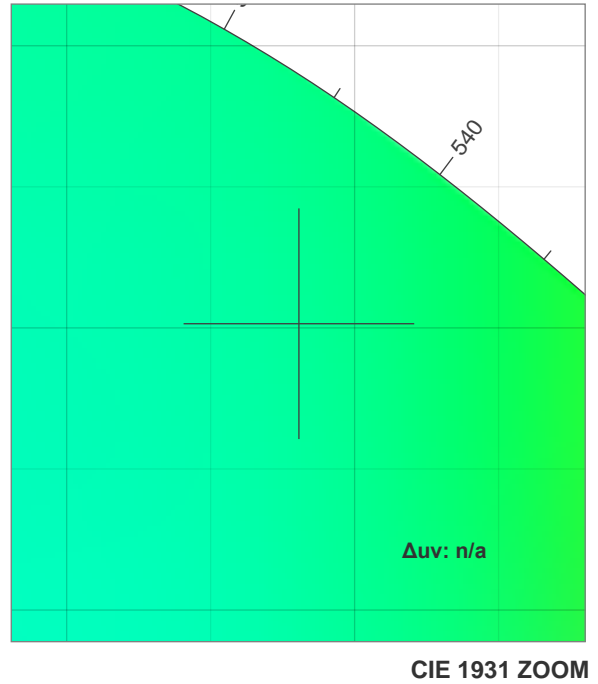
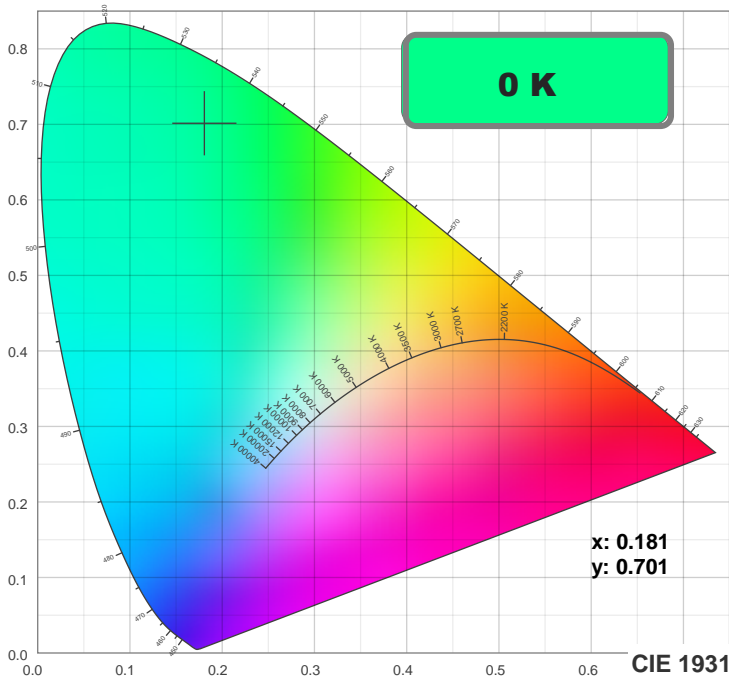
COLOR (RGBW): GREEN

FWHM: 59.1°X30.5°

PERFORMED BY: ABDULLAH QURESHI

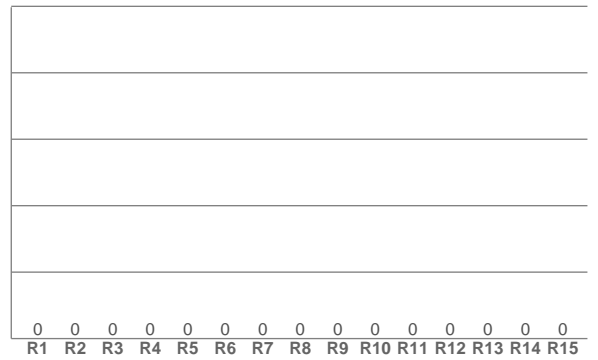
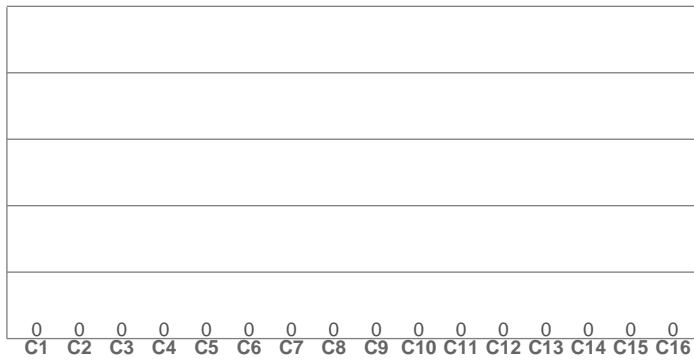
Spectra





TM30: 0.0

CRI: 0.0 (R1-R8)



CRI R values, only R1-R8 are used to calculate final CRI value

R1	R2	R3	R4	R5	R6	R7	R8	R9	R10	R11	R12	R13	R14	R15
0.0	0.0	0.0	0.0	0.0	0.0	0.0	0.0	0.0	0.0	0.0	0.0	0.0	0.0	0.0

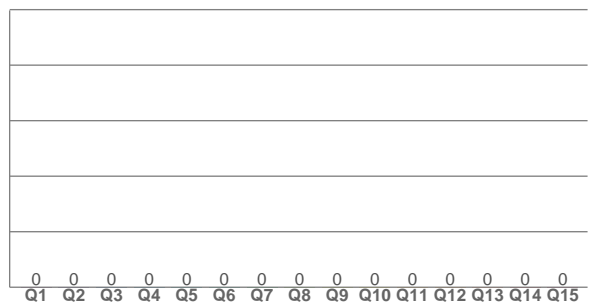
TM30 C values, 16 binned values out of total of 99 C values

C1	C2	C3	C4	C5	C6	C7	C8	C9	C10	C11	C12	C13	C14	C15	C16
0.0	0.0	0.0	0.0	0.0	0.0	0.0	0.0	0.0	0.0	0.0	0.0	0.0	0.0	0.0	0.0

CQS Q values

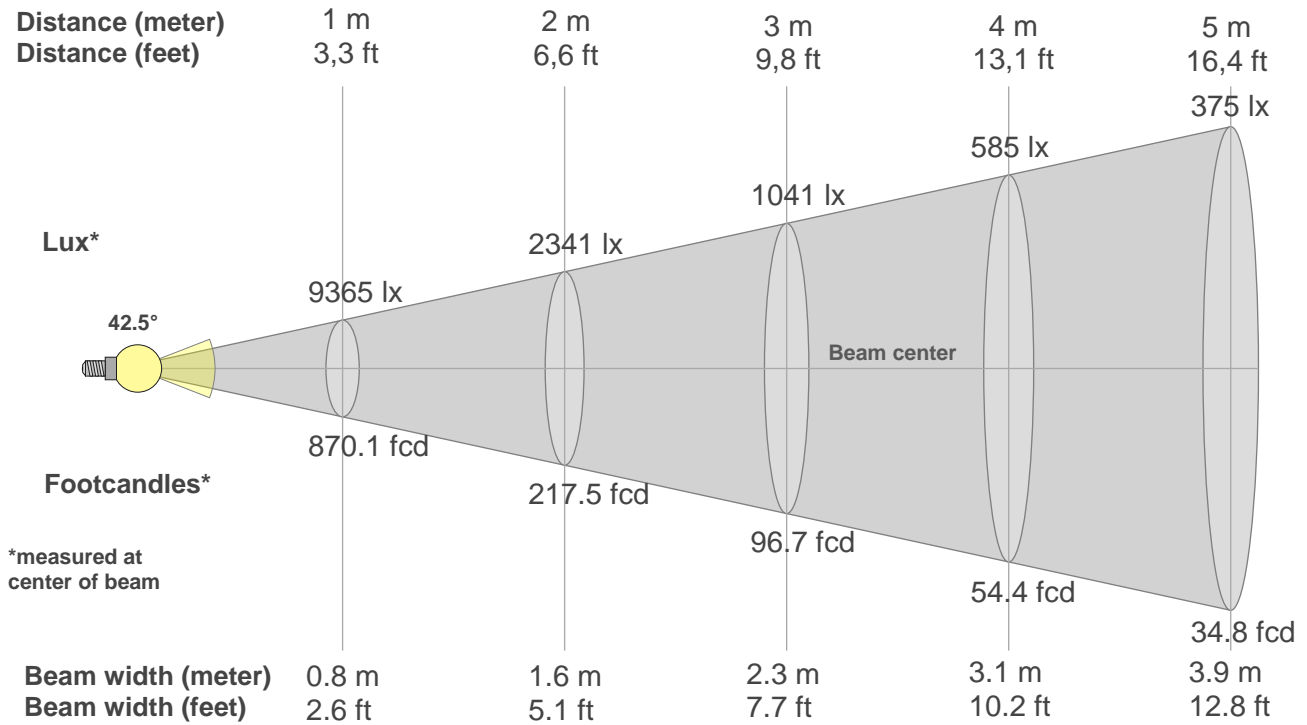
Q1	Q2	Q3	Q4	Q5	Q6	Q7	Q8	Q9	Q10	Q11	Q12	Q13	Q14	Q15
0.0	0.0	0.0	0.0	0.0	0.0	0.0	0.0	0.0	0.0	0.0	0.0	0.0	0.0	0.0

CQS: 0.0



Color parameters

Color temperature	Color rendering index	Red component	Color fidelity	Color gamut	Color quality scale	Color coordinate cie 1931	Color coordinate cie 1931	Color coordinate	Color coordinate	Color deviation from black body
CCT	CRI	CRI R9	TM30 Rf	TM30 Rg	CQS	x	y	u	v	Δuv
0 K	0.0	0.0	0.0	0.0	0.0	0.181	0.701	0.065	0.381	n/a



Beam intensities from 1-20m

1m	2m	3m	4m	5m	6m	7m	8m	9m	10m	11m	12m	13m	14m	15m	16m	17m	18m	19m	20m
3.3ft	6.6ft	9.8ft	13.1ft	16.4ft	19.7ft	23ft	26.2ft	29.5ft	32.8ft	36.1ft	39.4ft	42.7ft	45.9ft	49.2ft	52.5ft	55.8ft	59.1ft	62.3ft	65.6ft
9365lx	2341lx	1041lx	585lx	375lx	260lx	191lx	146lx	116lx	94lx	77lx	65lx	55lx	48lx	42lx	37lx	32lx	29lx	26lx	23lx
870.1fcd	217.5fcd	96.7fcd	54.4fcd	34.8fcd	24.2fcd	17.8fcd	13.6fcd	10.7fcd	8.7fcd	7.2fcd	6fcd	5.1fcd	4.4fcd	3.9fcd	3.4fcd	3fcd	2.7fcd	2.4fcd	2.2fcd

Intensities in 0° c-plane

0°	2°	4°	6°	8°	10°	12°	14°	16°	18°	20°	22°	24°	26°	28°	30°	32°	34°	36°	38°
9365	9280	8926	8372	7686	6895	6045	5182	4330	3526	2823	2212	1708	1309	1005	782	624	514	434	372
100%	99%	95%	89%	82%	74%	65%	55%	46%	38%	30%	24%	18%	14%	11%	8%	7%	5%	5%	4%

Intensities in 90° c-plane

0°	2°	4°	6°	8°	10°	12°	14°	16°	18°	20°	22°	24°	26°	28°	30°	32°	34°	36°	38°
9365	9359	9253	9088	8882	8643	8373	8077	7752	7389	6991	6555	6087	5592	5078	4558	4037	3533	3051	2595
100%	100%	99%	97%	95%	92%	89%	86%	83%	79%	75%	70%	65%	60%	54%	49%	43%	38%	33%	28%

Intensities in 180° c-plane

0°	2°	4°	6°	8°	10°	12°	14°	16°	18°	20°	22°	24°	26°	28°	30°	32°	34°	36°	38°
9365	9280	8926	8372	7686	6895	6045	5182	4330	3526	2823	2212	1708	1309	1005	782	624	514	434	372
100%	99%	95%	89%	82%	74%	65%	55%	46%	38%	30%	24%	18%	14%	11%	8%	7%	5%	5%	4%

Intensities in 270° c-plane

0°	2°	4°	6°	8°	10°	12°	14°	16°	18°	20°	22°	24°	26°	28°	30°	32°	34°	36°	38°
9365	9359	9253	9088	8882	8643	8373	8077	7752	7389	6991	6555	6087	5592	5078	4558	4037	3533	3051	2595
100%	100%	99%	97%	95%	92%	89%	86%	83%	79%	75%	70%	65%	60%	54%	49%	43%	38%	33%	28%

Beam angle 50%	Field angle 10%	Cutoff angle 2,5%	Intensity ratio in 120° cone	Intensity ratio in 90° cone
42.5°	75.3°	111°	90.4%	83.3%