

Light efficiency:



Light quality:



Color temperature:



Output: 10253 lm

Peak: 15807 cd

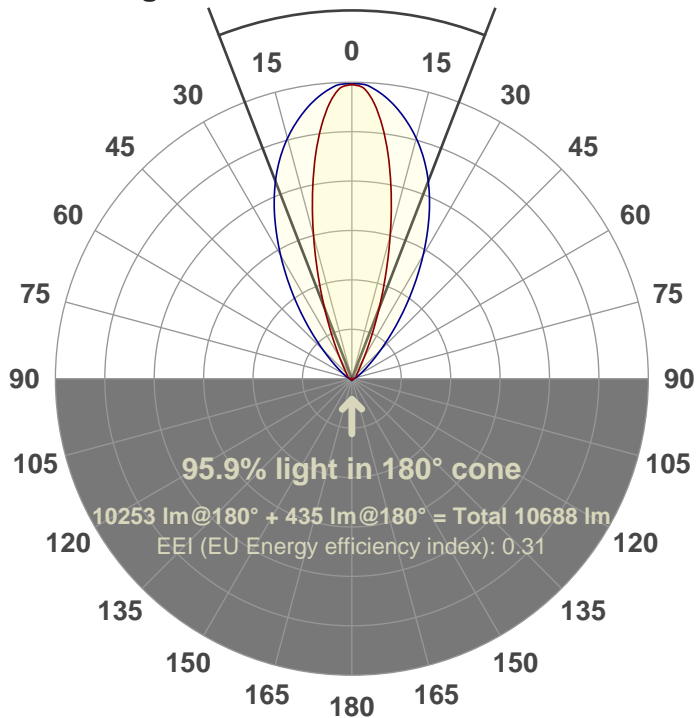
Power: 204 W

PF: 1.0

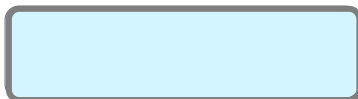


42.3°

Beam angle



Color



CIE 1931
x: 0.311
y: 0.322

Product name:

FL200-CM-RGBW-IM-60X30-ELV-SM-WHITE

Date and time:

24-Aug-18 3:44:35 PM

Additional Information:

LED: RGBW

FIXTURE: FL200

FILM: 250286 (60°X30°)

COLOR-AMP: ON

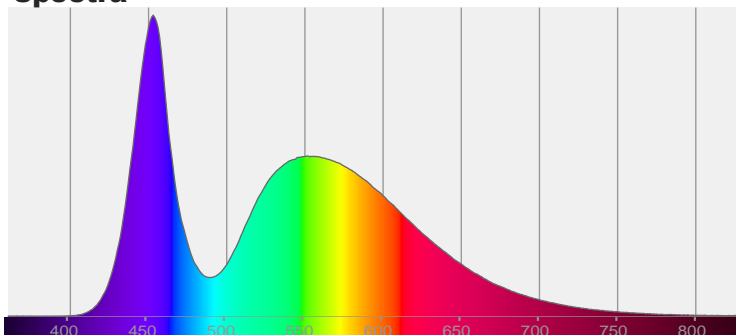
STABILIZED: YES

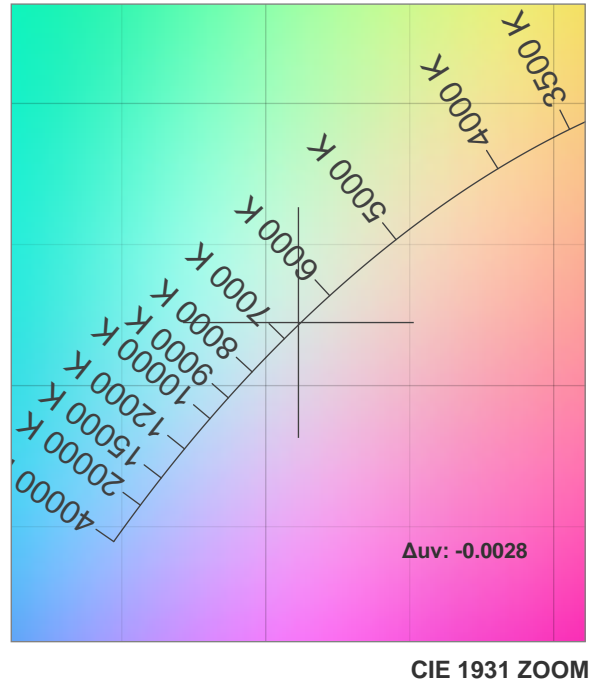
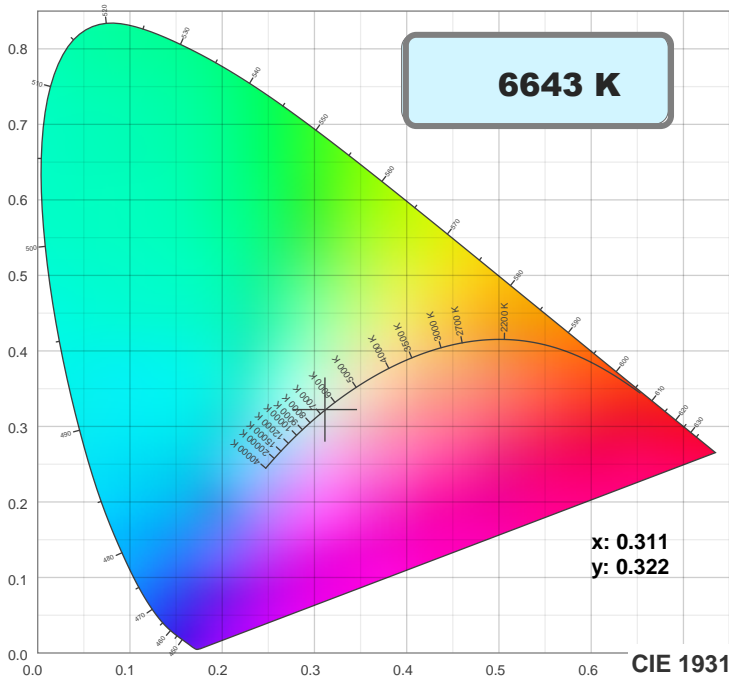
COLOR (RGBW): WHITE

FWHM: 58.8°X30.2°

PERFORMED BY: ABDULLAH QURESHI

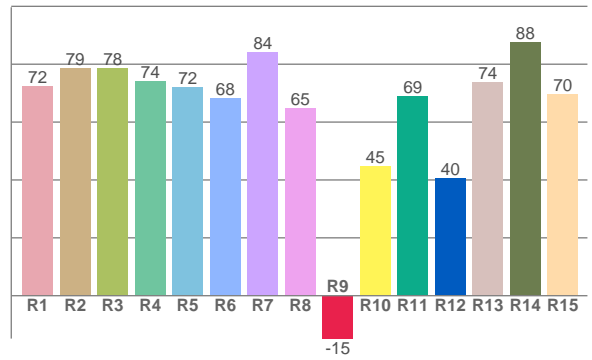
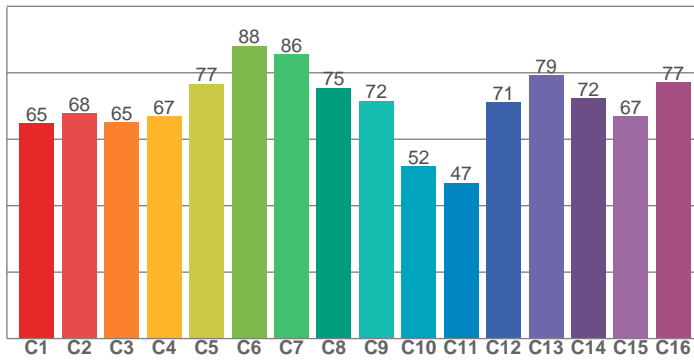
Spectra



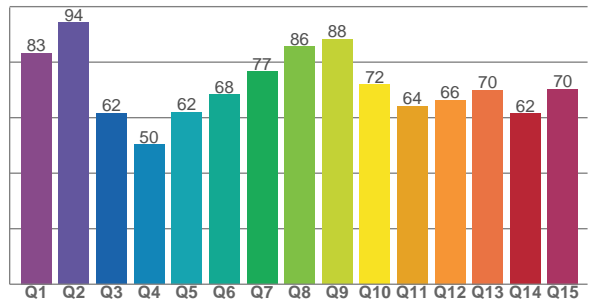


TM30: 70.3

CRI: 74.1 (R1-R8)



CQS: 69.4



CRI R values, only R1-R8 are used to calculate final CRI value

R1	R2	R3	R4	R5	R6	R7	R8	R9	R10	R11	R12	R13	R14	R15
72.4	78.6	78.5	74.1	72.1	68.1	84.1	64.8	-14.8	44.8	68.8	40.5	73.7	87.6	69.7

TM30 C values, 16 binned values out of total of 99 C values

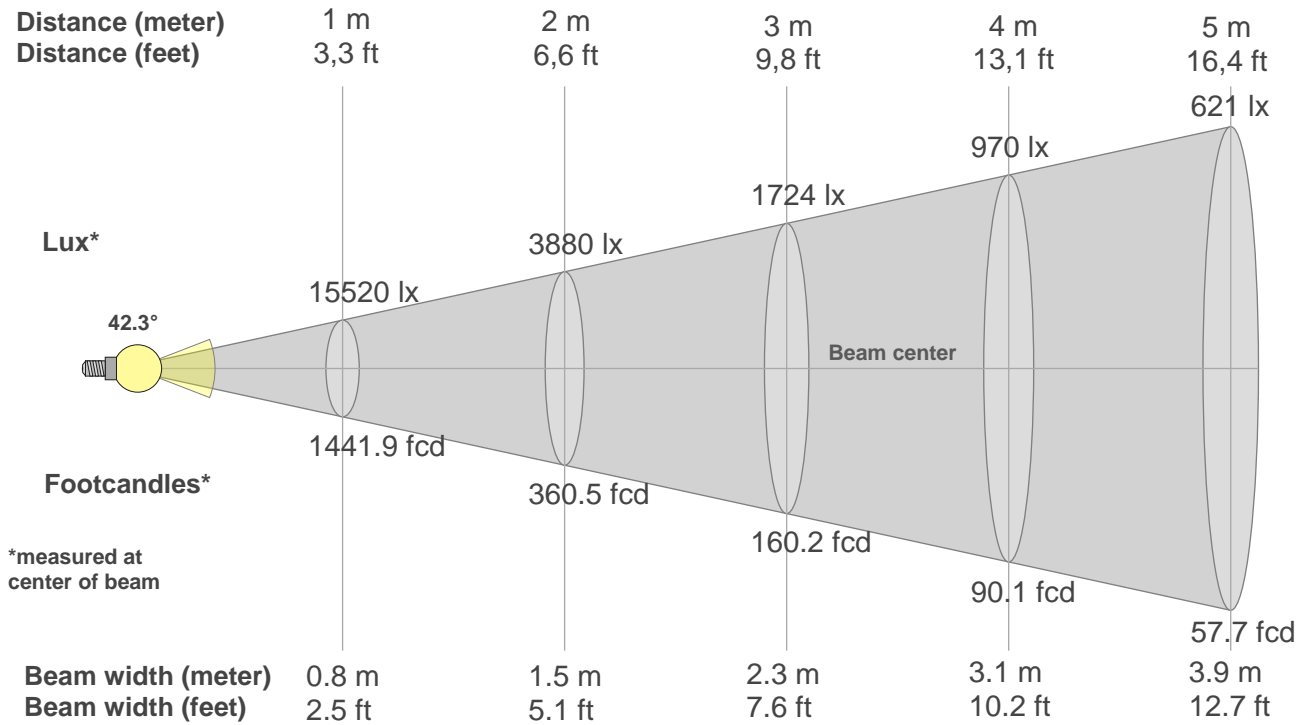
C1	C2	C3	C4	C5	C6	C7	C8	C9	C10	C11	C12	C13	C14	C15	C16
64.8	67.8	65.0	66.9	76.7	88.1	85.5	75.4	71.5	51.8	46.9	71.1	79.2	72.3	66.9	77.2

CQS Q values

Q1	Q2	Q3	Q4	Q5	Q6	Q7	Q8	Q9	Q10	Q11	Q12	Q13	Q14	Q15
83.3	94.3	61.6	50.2	62.1	68.3	76.7	85.6	88.2	71.9	64.2	66.3	70.0	61.5	70.3

Color parameters

Color temperature	Color rendering index	Red component	Color fidelity	Color gamut	Color quality scale	Color coordinate cie 1931	Color coordinate cie 1931	Color coordinate	Color coordinate	Color deviation from black body
CCT	CRI	CRI R9	TM30 Rf	TM30 Rg	CQS	x	y	u	v	Δuv
6643 K	74.1	-14.8	70.3	92.8	69.4	0.311	0.322	0.199	0.310	-0.0028



Beam intensities from 1-20m

1m	2m	3m	4m	5m	6m	7m	8m	9m	10m	11m	12m	13m	14m	15m	16m	17m	18m	19m	20m
3.3ft	6.6ft	9.8ft	13.1ft	16.4ft	19.7ft	23ft	26.2ft	29.5ft	32.8ft	36.1ft	39.4ft	42.7ft	45.9ft	49.2ft	52.5ft	55.8ft	59.1ft	62.3ft	65.6ft
15520lx	3880lx	1724lx	970lx	621lx	431lx	317lx	243lx	192lx	155lx	128lx	108lx	92lx	79lx	69lx	61lx	54lx	48lx	43lx	39lx
1441.9fcd	360.5fcd	160.2fcd	90.1fcd	57.7fcd	40.1fcd	29.4fcd	22.5fcd	17.8fcd	14.4fcd	11.9fcd	10fcd	8.5fcd	7.4fcd	6.4fcd	5.6fcd	5fcd	4.5fcd	4fcd	3.6fcd

Intensities in 0° c-plane

0°	2°	4°	6°	8°	10°	12°	14°	16°	18°	20°	22°	24°	26°	28°	30°	32°	34°	36°	38°
15.5K	15.3K	14.8K	13.9K	12.7K	11.4K	10.0K	8.5K	7.1K	5.8K	4.6K	3.6K	2.8K	2.1K	1.6K	1.3K	1.0K	0.8K	0.7K	0.6K
100%	99%	95%	89%	82%	73%	64%	55%	46%	37%	30%	23%	18%	14%	11%	8%	7%	5%	5%	4%

Intensities in 90° c-plane

0°	2°	4°	6°	8°	10°	12°	14°	16°	18°	20°	22°	24°	26°	28°	30°	32°	34°	36°	38°
15.5K	15.5K	15.3K	15.1K	14.7K	14.3K	13.9K	13.4K	12.8K	12.2K	11.6K	10.8K	10.1K	9.2K	8.4K	7.5K	6.6K	5.8K	5.0K	4.2K
100%	100%	99%	97%	95%	92%	89%	86%	83%	79%	75%	70%	65%	59%	54%	48%	43%	37%	32%	27%

Intensities in 180° c-plane

0°	2°	4°	6°	8°	10°	12°	14°	16°	18°	20°	22°	24°	26°	28°	30°	32°	34°	36°	38°
15.5K	15.3K	14.8K	13.9K	12.7K	11.4K	10.0K	8.5K	7.1K	5.8K	4.6K	3.6K	2.8K	2.1K	1.6K	1.3K	1.0K	0.8K	0.7K	0.6K
100%	99%	95%	89%	82%	73%	64%	55%	46%	37%	30%	23%	18%	14%	11%	8%	7%	5%	5%	4%

Intensities in 270° c-plane

0°	2°	4°	6°	8°	10°	12°	14°	16°	18°	20°	22°	24°	26°	28°	30°	32°	34°	36°	38°
15.5K	15.5K	15.3K	15.1K	14.7K	14.3K	13.9K	13.4K	12.8K	12.2K	11.6K	10.8K	10.1K	9.2K	8.4K	7.5K	6.6K	5.8K	5.0K	4.2K
100%	100%	99%	97%	95%	92%	89%	86%	83%	79%	75%	70%	65%	59%	54%	48%	43%	37%	32%	27%

Beam angle 50%	Field angle 10%	Cutoff angle 2,5%	Intensity ratio in 120° cone	Intensity ratio in 90° cone
42.3°	75°	110.8°	90.3%	83.3%