

Light efficiency:



Light quality:



Color temperature:



Output: 9727 lm

Peak: 5781 cd

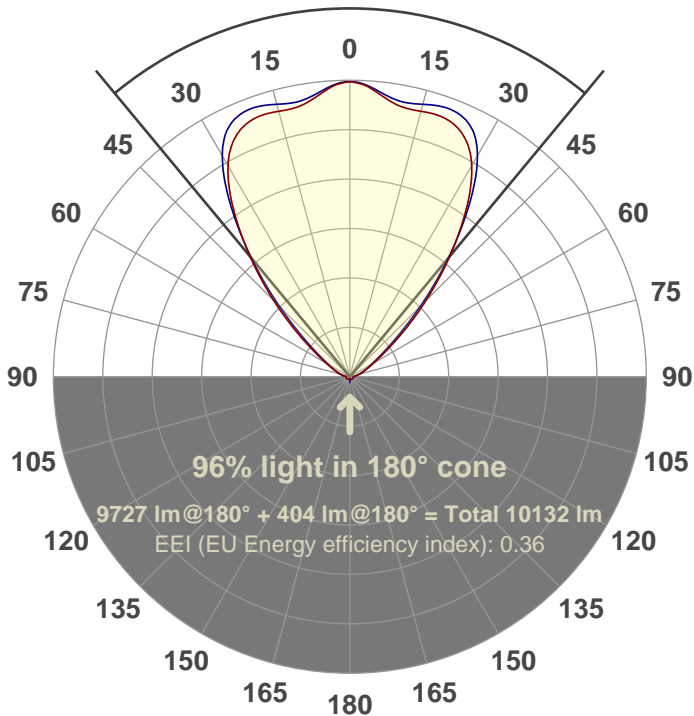
Power: 204 W

PF: 1.0



79.4°

Beam angle



Product name:

FL200-CM-RGBW-IM-80-ELV-SM-WHITE

Date and time:

27-Aug-18 4:08:35 PM

Additional Information:

LED: RGBW

FIXTURE: FL200

FILM: 250278 (80°)

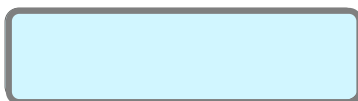
COLOR-AMP: ON

STABILIZED: YES

COLOR (RGBW): WHITE

PERFORMED BY: ABDULLAH QURESHI

Color

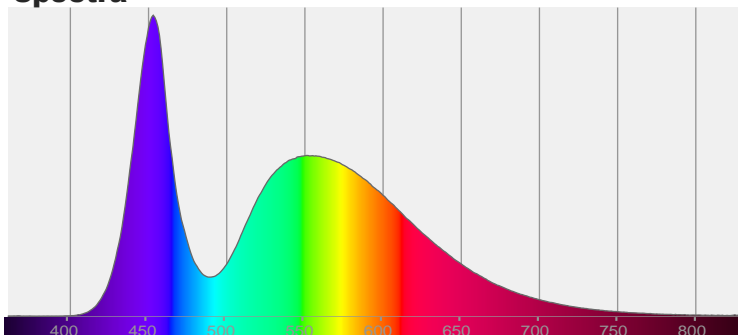


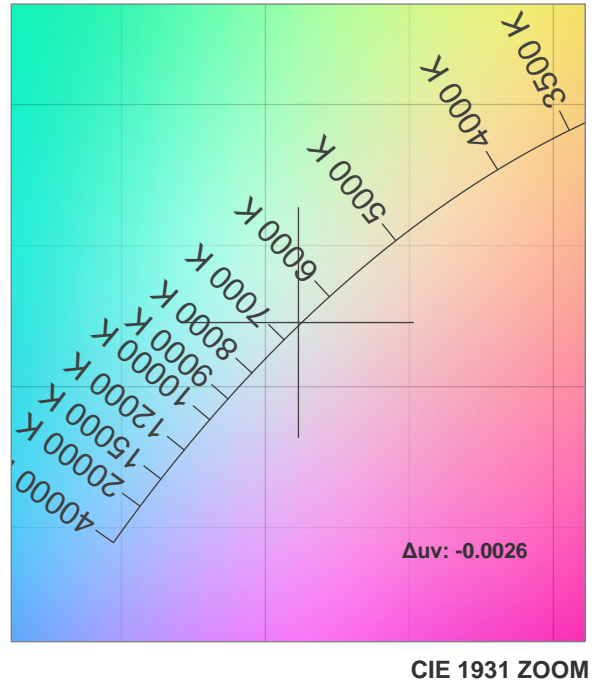
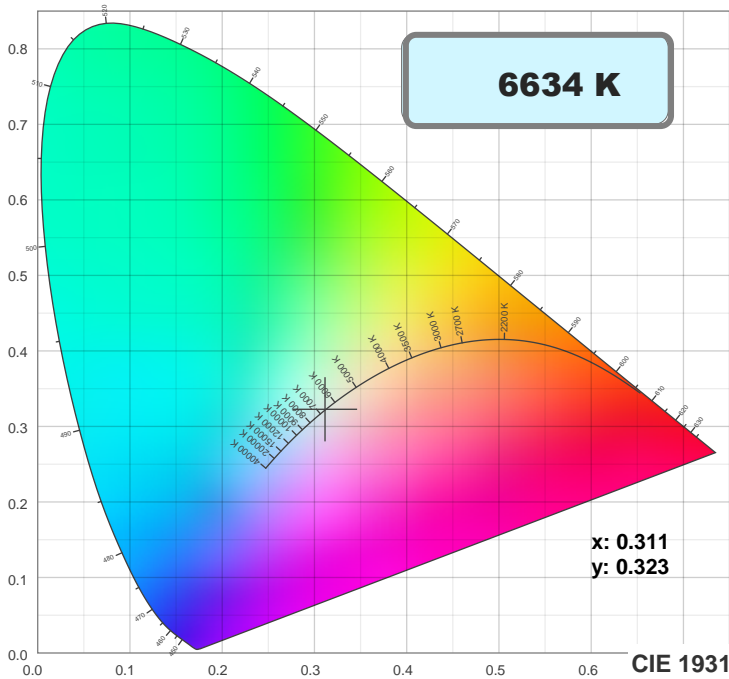
CIE 1931

x: 0.311

y: 0.323

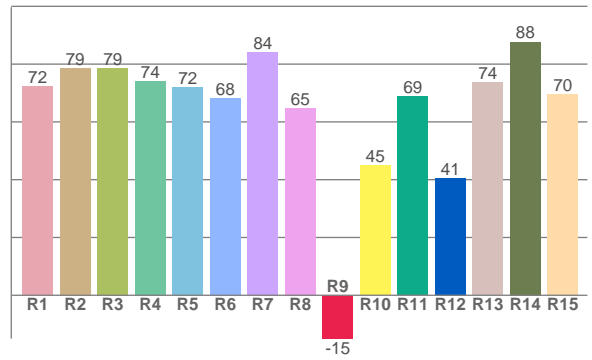
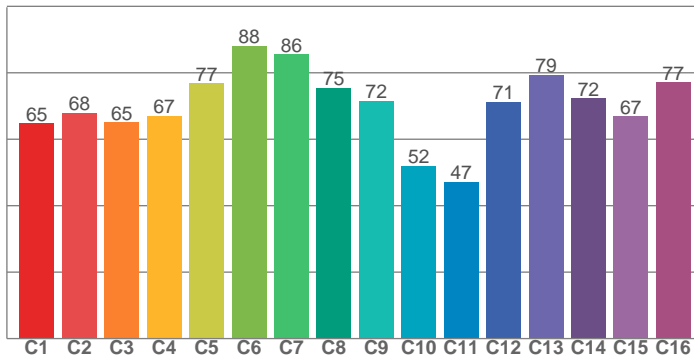
Spectra





TM30: 70.4

CRI: 74.1 (R1-R8)



CRI R values, only R1-R8 are used to calculate final CRI value

R1	R2	R3	R4	R5	R6	R7	R8	R9	R10	R11	R12	R13	R14	R15
72.4	78.6	78.6	74.1	72.1	68.2	84.1	64.8	-15.0	44.9	68.7	40.5	73.6	87.7	69.6

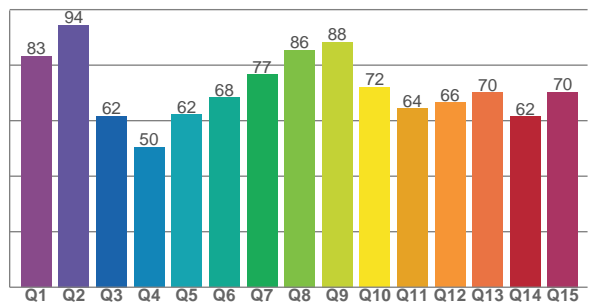
TM30 C values, 16 binned values out of total of 99 C values

C1	C2	C3	C4	C5	C6	C7	C8	C9	C10	C11	C12	C13	C14	C15	C16
64.8	67.9	65.1	67.1	76.9	88.2	85.5	75.4	71.6	52.0	47.2	71.3	79.3	72.3	66.9	77.1

CQS Q values

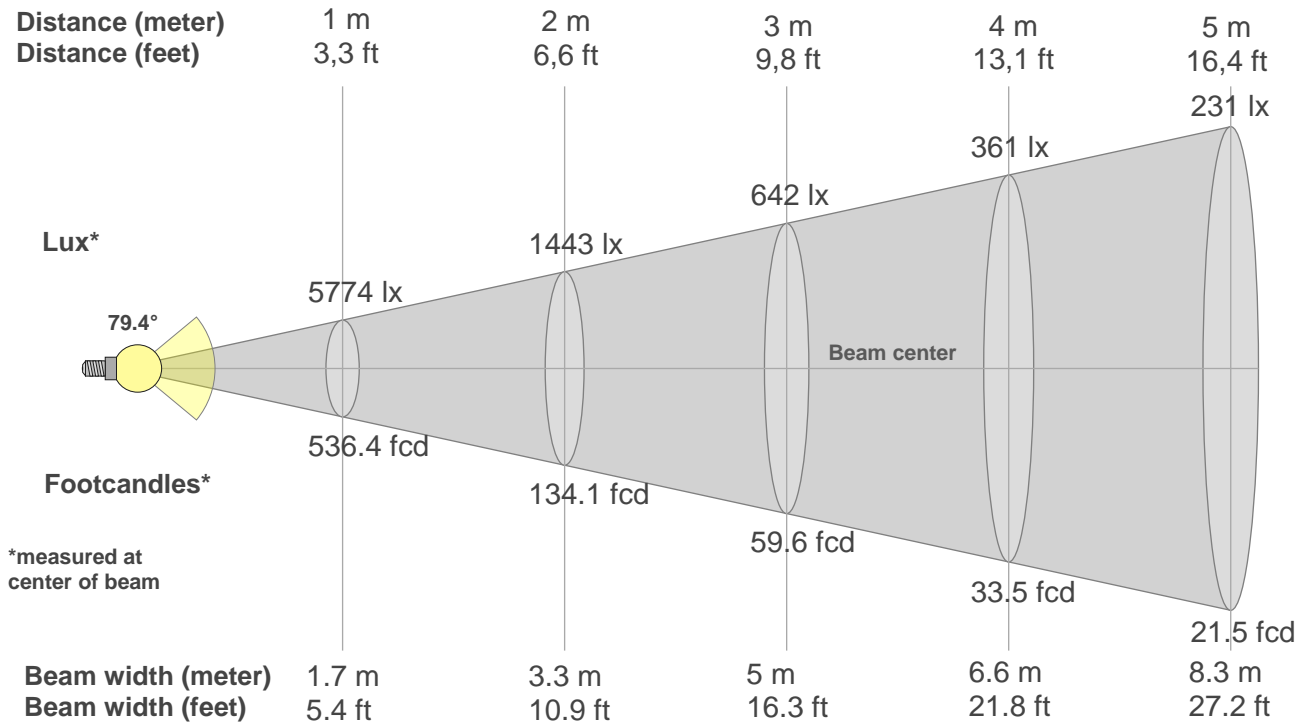
Q1	Q2	Q3	Q4	Q5	Q6	Q7	Q8	Q9	Q10	Q11	Q12	Q13	Q14	Q15
83.2	94.4	61.7	50.4	62.2	68.3	76.6	85.5	88.3	72.0	64.4	66.5	70.1	61.5	70.2

CQS: 69.4



Color parameters

Color temperature	Color rendering index	Red component	Color fidelity	Color gamut	Color quality scale	Color coordinate cie 1931	Color coordinate cie 1931	Color coordinate	Color coordinate	Color deviation from black body
CCT	CRI	CRI R9	TM30 Rf	TM30 Rg	CQS	x	y	u	v	Δuv
6634 K	74.1	-15.0	70.4	92.8	69.4	0.311	0.323	0.199	0.310	-0.0026



Beam intensities from 1-20m

1m	2m	3m	4m	5m	6m	7m	8m	9m	10m	11m	12m	13m	14m	15m	16m	17m	18m	19m	20m
3.3ft	6.6ft	9.8ft	13.1ft	16.4ft	19.7ft	23ft	26.2ft	29.5ft	32.8ft	36.1ft	39.4ft	42.7ft	45.9ft	49.2ft	52.5ft	55.8ft	59.1ft	62.3ft	65.6ft
5774lx	1443lx	642lx	361lx	231lx	160lx	118lx	90lx	71lx	58lx	48lx	40lx	34lx	29lx	26lx	23lx	20lx	18lx	16lx	14lx
536.4fcd	134.1fcd	59.6fcd	33.5fcd	21.5fcd	14.9fcd	10.9fcd	8.4fcd	6.6fcd	5.4fcd	4.4fcd	3.7fcd	3.2fcd	2.7fcd	2.4fcd	2.1fcd	1.9fcd	1.7fcd	1.5fcd	1.3fcd

Intensities in 0° c-plane

0°	5°	10°	15°	20°	25°	30°	35°	40°	45°	50°	55°	60°	65°	70°	75°	80°	85°	90°	95°
5774	5621	5407	5386	5396	5231	4767	3957	3006	2109	1356	840	548	378	269	191	131	87	68	0
100%	97%	94%	93%	93%	91%	83%	69%	52%	37%	23%	15%	9%	7%	5%	3%	2%	2%	1%	0%

Intensities in 90° c-plane

0°	5°	10°	15°	20°	25°	30°	35°	40°	45°	50°	55°	60°	65°	70°	75°	80°	85°	90°	95°
5774	5655	5499	5529	5599	5486	4992	4047	2954	1959	1202	741	491	352	259	188	131	88	70	0
100%	98%	95%	96%	97%	95%	86%	70%	51%	34%	21%	13%	9%	6%	4%	3%	2%	2%	1%	0%

Intensities in 180° c-plane

0°	5°	10°	15°	20°	25°	30°	35°	40°	45°	50°	55°	60°	65°	70°	75°	80°	85°	90°	95°
5774	5621	5407	5386	5396	5231	4767	3957	3006	2109	1356	840	548	378	269	191	131	87	68	0
100%	97%	94%	93%	93%	91%	83%	69%	52%	37%	23%	15%	9%	7%	5%	3%	2%	2%	1%	0%

Intensities in 270° c-plane

0°	5°	10°	15°	20°	25°	30°	35°	40°	45°	50°	55°	60°	65°	70°	75°	80°	85°	90°	95°
5774	5655	5499	5529	5599	5486	4992	4047	2954	1959	1202	741	491	352	259	188	131	88	70	0
100%	98%	95%	96%	97%	95%	86%	70%	51%	34%	21%	13%	9%	6%	4%	3%	2%	2%	1%	0%

Beam angle 50%	Field angle 10%	Cutoff angle 2,5%	Intensity ratio in 120° cone	Intensity ratio in 90° cone
79.4°	116.5°	157.4°	89.5%	76.5%