

Light efficiency:

18 Lumen/Watt

Light quality:

CRI: 0.0

Color temperature:

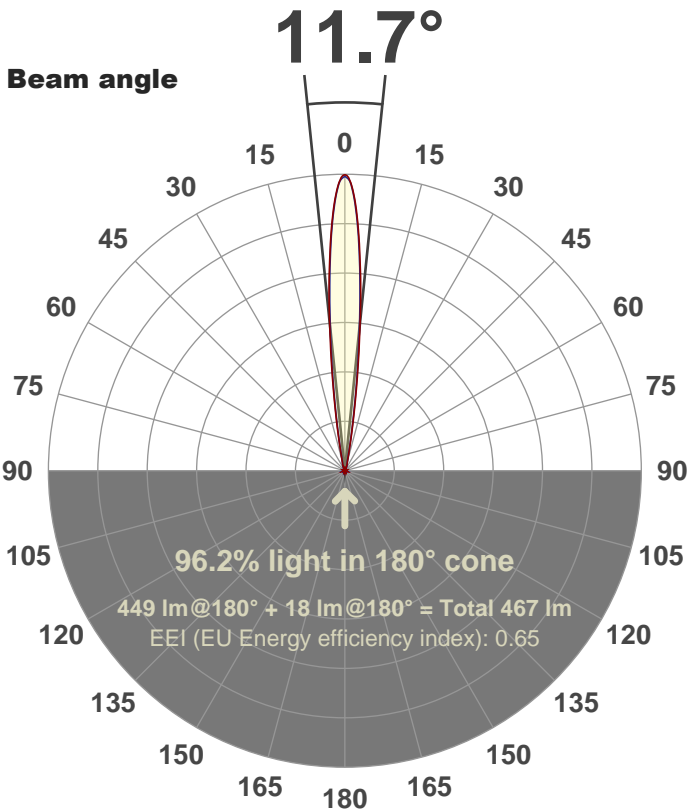
0 K

Output: 449 lm

Peak: 6888 cd

Power: 24.8 W

PF: 1.0



Product name:

FL25-CM-RGBW65K-IM-10-ELV-SM120-RED

Date and time:

03-Jul-18 9:53:47 AM

Additional Information:

LED: RGBW (6500K)

FIXTURE: FL25

FILM: 250251 (10°)

COLOR-AMP: ON

STABILIZED: YES

COLOR (RGBW): RED

PERFORMED BY: ABDULLAH QURESHI

Color

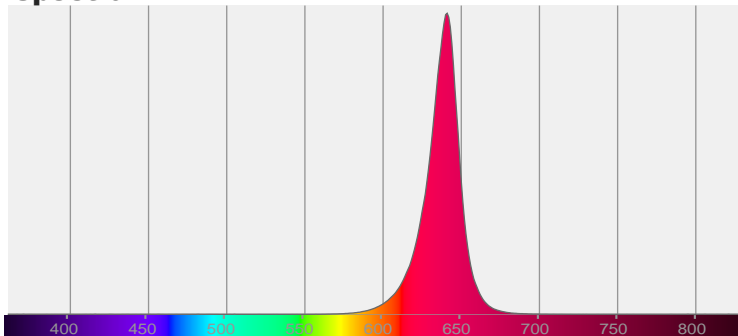


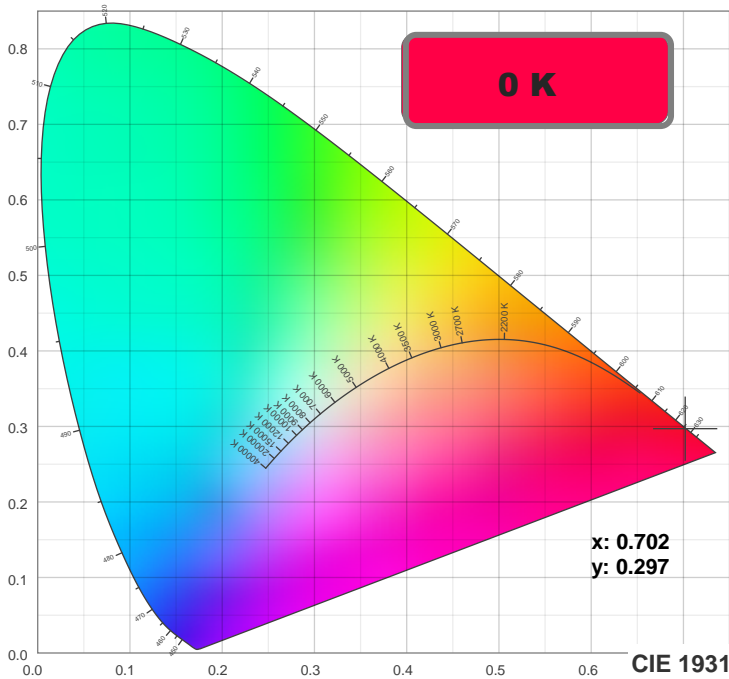
CIE 1931

x: 0.702

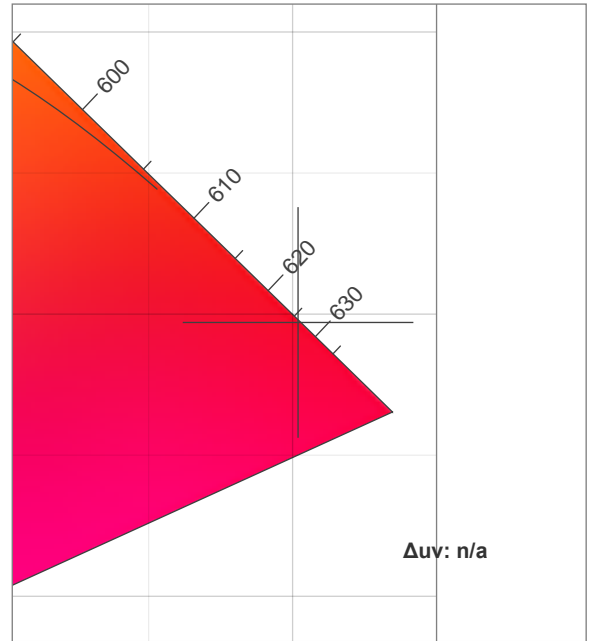
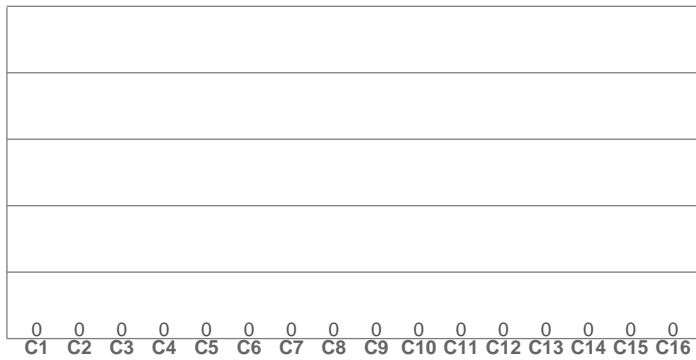
y: 0.297

Spectra



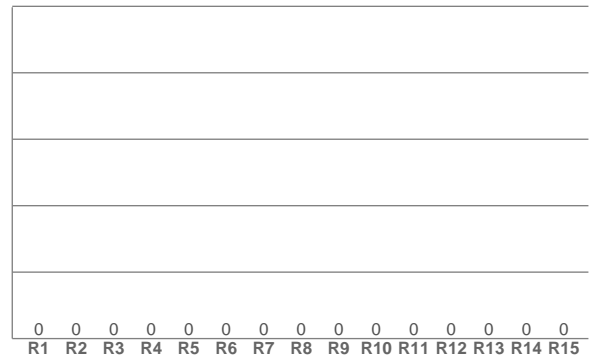


TM30: 0.0

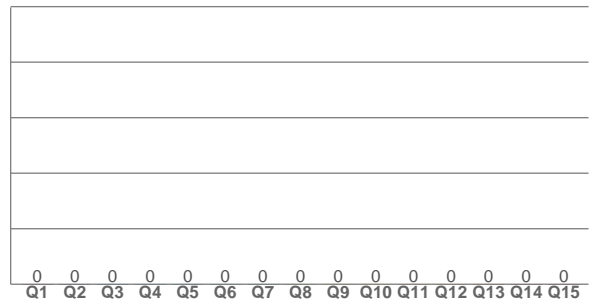


CIE 1931 ZOOM

CRI: 0.0 (R1-R8)



CQS: 0.0



CRI R values, only R1-R8 are used to calculate final CRI value

R1	R2	R3	R4	R5	R6	R7	R8	R9	R10	R11	R12	R13	R14	R15
0.0	0.0	0.0	0.0	0.0	0.0	0.0	0.0	0.0	0.0	0.0	0.0	0.0	0.0	0.0

TM30 C values, 16 binned values out of total of 99 C values

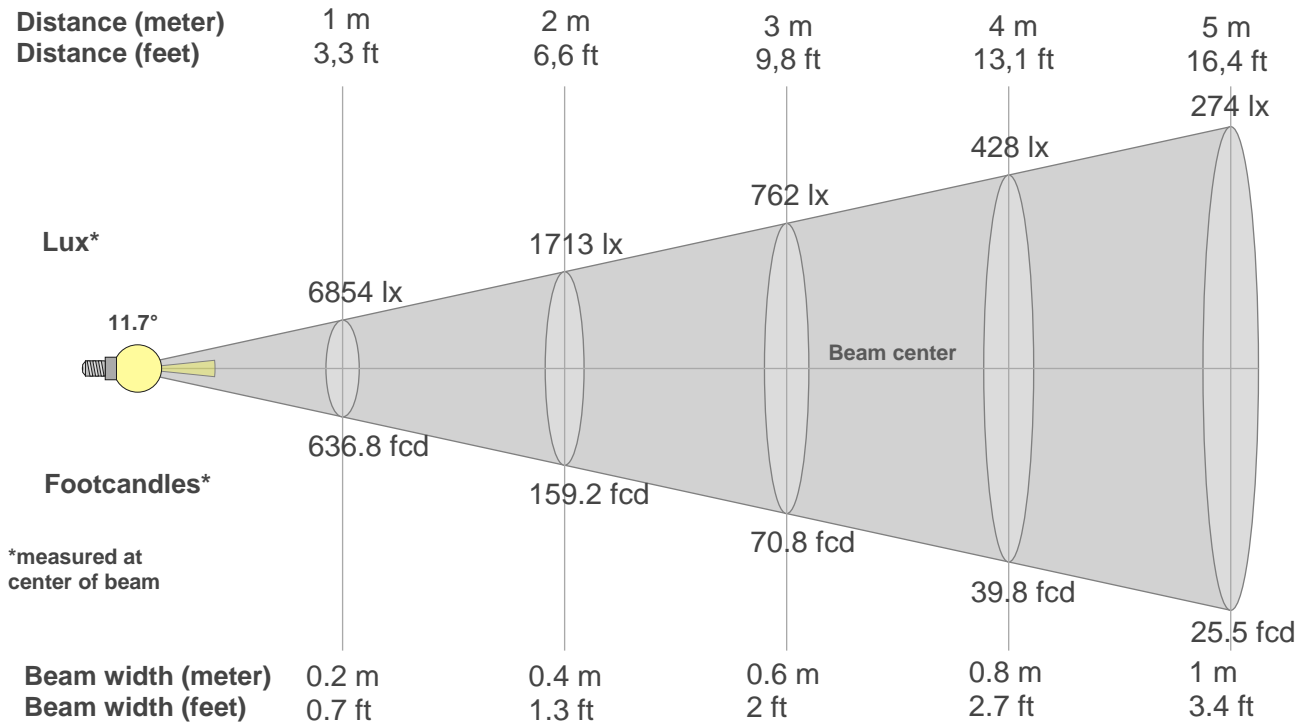
C1	C2	C3	C4	C5	C6	C7	C8	C9	C10	C11	C12	C13	C14	C15	C16
0.0	0.0	0.0	0.0	0.0	0.0	0.0	0.0	0.0	0.0	0.0	0.0	0.0	0.0	0.0	0.0

CQS Q values

Q1	Q2	Q3	Q4	Q5	Q6	Q7	Q8	Q9	Q10	Q11	Q12	Q13	Q14	Q15
0.0	0.0	0.0	0.0	0.0	0.0	0.0	0.0	0.0	0.0	0.0	0.0	0.0	0.0	0.0

Color parameters

Color temperature	Color rendering index	Red component	Color fidelity	Color gamut	Color quality scale	Color coordinate cie 1931	Color coordinate cie 1931	Color coordinate	Color coordinate	Color deviation from black body
CCT	CRI	CRI R9	TM30 Rf	TM30 Rg	CQS	x	y	u	v	Δuv
0 K	0.0	0.0	0.0	0.0	0.0	0.702	0.297	0.544	0.345	n/a



Beam intensities from 1-20m

1m	2m	3m	4m	5m	6m	7m	8m	9m	10m	11m	12m	13m	14m	15m	16m	17m	18m	19m	20m
3.3ft	6.6ft	9.8ft	13.1ft	16.4ft	19.7ft	23ft	26.2ft	29.5ft	32.8ft	36.1ft	39.4ft	42.7ft	45.9ft	49.2ft	52.5ft	55.8ft	59.1ft	62.3ft	65.6ft
6854lx	1713lx	762lx	428lx	274lx	190lx	140lx	107lx	85lx	69lx	57lx	48lx	41lx	35lx	30lx	27lx	24lx	21lx	19lx	17lx
636.8fcd	159.2fcd	70.8fcd	39.8fcd	25.5fcd	17.7fcd	13fcd	9.9fcd	7.9fcd	6.4fcd	5.3fcd	4.4fcd	3.8fcd	3.2fcd	2.8fcd	2.5fcd	2.2fcd	2fcd	1.8fcd	1.6fcd

Intensities in 0° c-plane

0°	1°	2°	3°	4°	5°	6°	7°	8°	9°	10°	11°	12°	13°	14°	15°	16°	17°	18°	19°
6854	6756	6371	5775	5025	4246	3379	2603	1935	1400	996	708	510	382	300	249	216	192	173	156
100%	99%	93%	84%	73%	62%	49%	38%	28%	20%	15%	10%	7%	6%	4%	4%	3%	3%	3%	2%

Intensities in 90° c-plane

0°	1°	2°	3°	4°	5°	6°	7°	8°	9°	10°	11°	12°	13°	14°	15°	16°	17°	18°	19°
6854	6756	6342	5705	4914	4057	3220	2456	1795	1265	872	604	432	324	259	221	198	181	166	153
100%	99%	93%	83%	72%	59%	47%	36%	26%	18%	13%	9%	6%	5%	4%	3%	3%	3%	2%	2%

Intensities in 180° c-plane

0°	1°	2°	3°	4°	5°	6°	7°	8°	9°	10°	11°	12°	13°	14°	15°	16°	17°	18°	19°
6854	6756	6371	5775	5025	4246	3379	2603	1935	1400	996	708	510	382	300	249	216	192	173	156
100%	99%	93%	84%	73%	62%	49%	38%	28%	20%	15%	10%	7%	6%	4%	4%	3%	3%	3%	2%

Intensities in 270° c-plane

0°	1°	2°	3°	4°	5°	6°	7°	8°	9°	10°	11°	12°	13°	14°	15°	16°	17°	18°	19°
6854	6756	6342	5705	4914	4057	3220	2456	1795	1265	872	604	432	324	259	221	198	181	166	153
100%	99%	93%	83%	72%	59%	47%	36%	26%	18%	13%	9%	6%	5%	4%	3%	3%	3%	2%	2%

Beam angle 50%	Field angle 10%	Cutoff angle 2,5%	Intensity ratio in 120° cone	Intensity ratio in 90° cone
11.7°	21.8°	36.3°	91.8%	89.2%