

Light efficiency:



Light quality:



Color temperature:

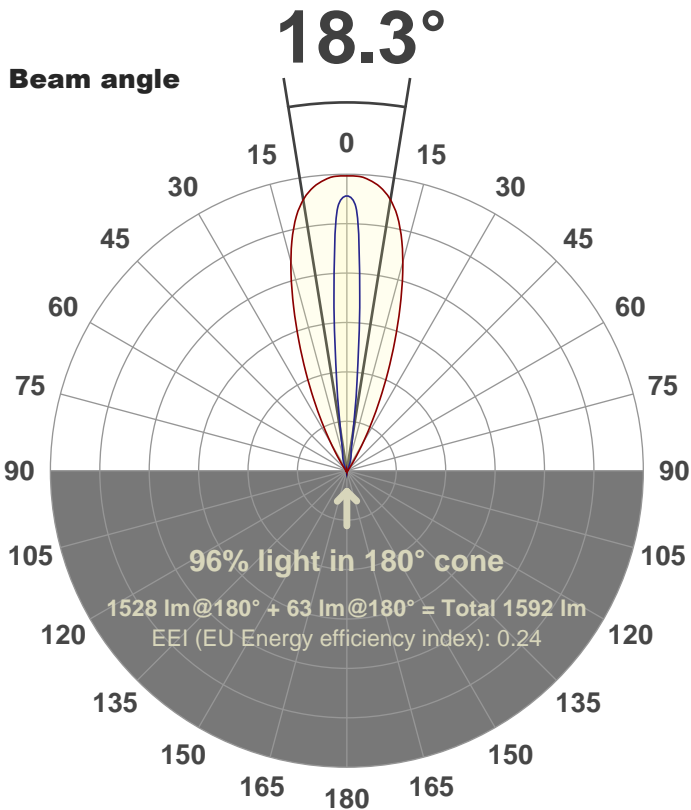


Output: 1528 lm

Peak: 8897 cd

Power: 24.9 W

PF: 1.0



Product name:

FL25-CM-RGBW65K-IM-10x40-ELV-SM120-WHITE

Date and time:

10-Aug-18 2:18:12 PM

Additional Information:

LED: RGBW (6500K)

FIXTURE: FL25

FILM: 250264 (10°X40°)

COLOR-AMP: ON

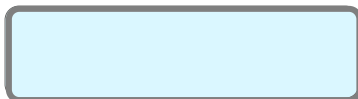
STABILIZED: YES

COLOR (RGBW): WHITE

FWHM: 9.7°X39.3°

PERFORMED BY: ABDULLAH QURESHI

Color

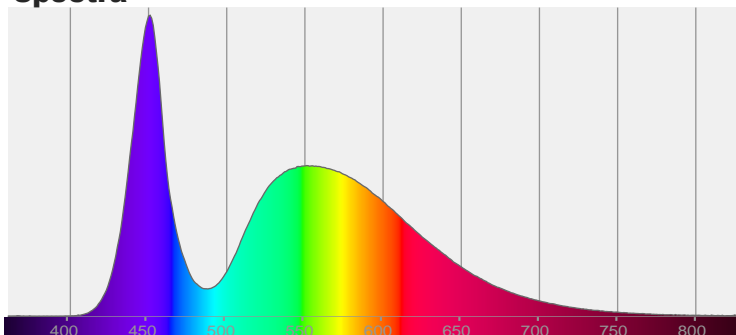


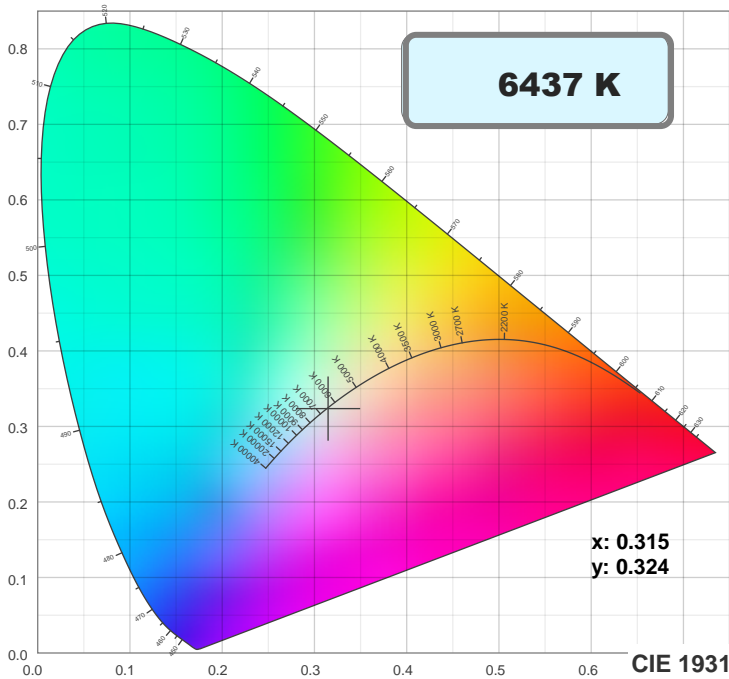
CIE 1931

x: 0.315

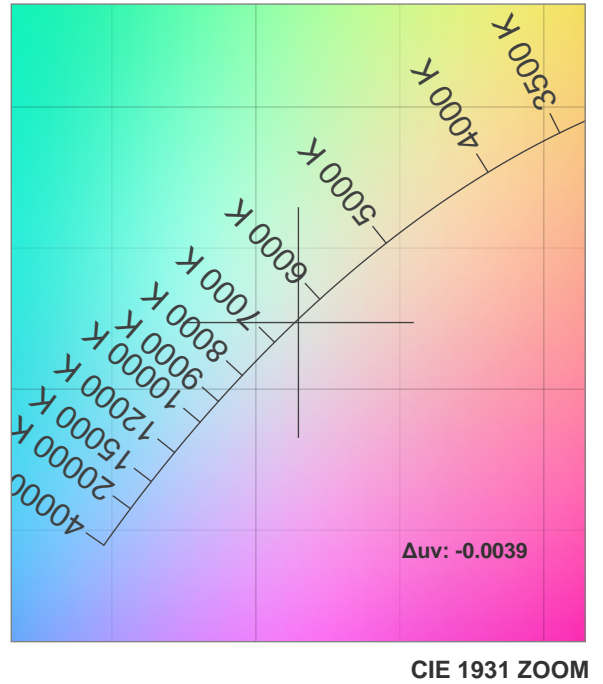
y: 0.324

Spectra

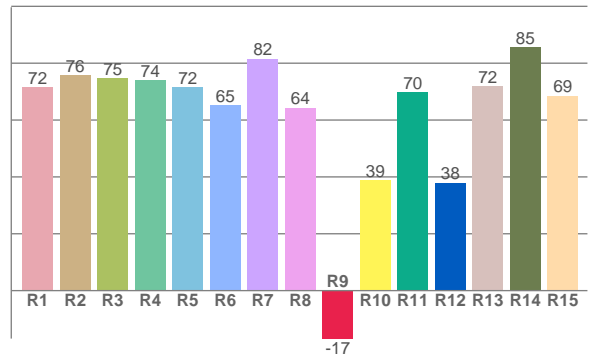
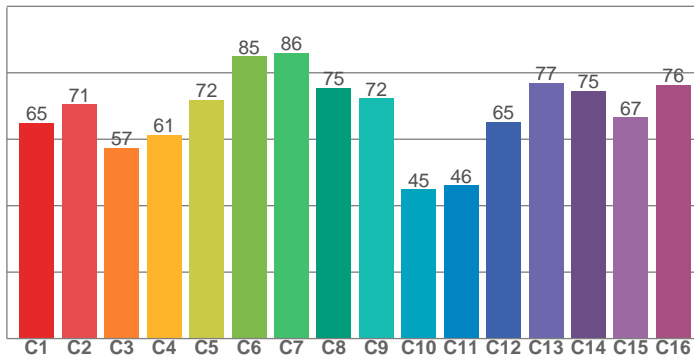




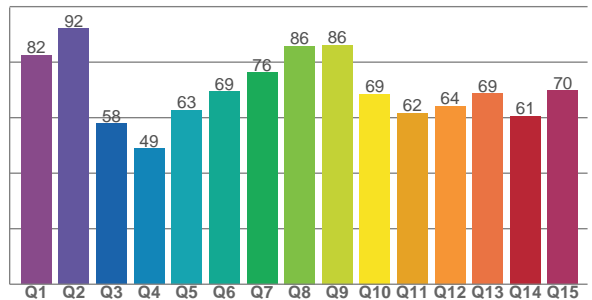
TM30: 67.9



CRI: 72.3 (R1-R8)



CQS: 68.1



CRI R values, only R1-R8 are used to calculate final CRI value

R1	R2	R3	R4	R5	R6	R7	R8	R9	R10	R11	R12	R13	R14	R15
71.6	75.8	74.8	74.0	71.5	65.1	81.5	64.3	-16.9	38.8	69.8	37.9	71.8	85.5	68.6

TM30 C values, 16 binned values out of total of 99 C values

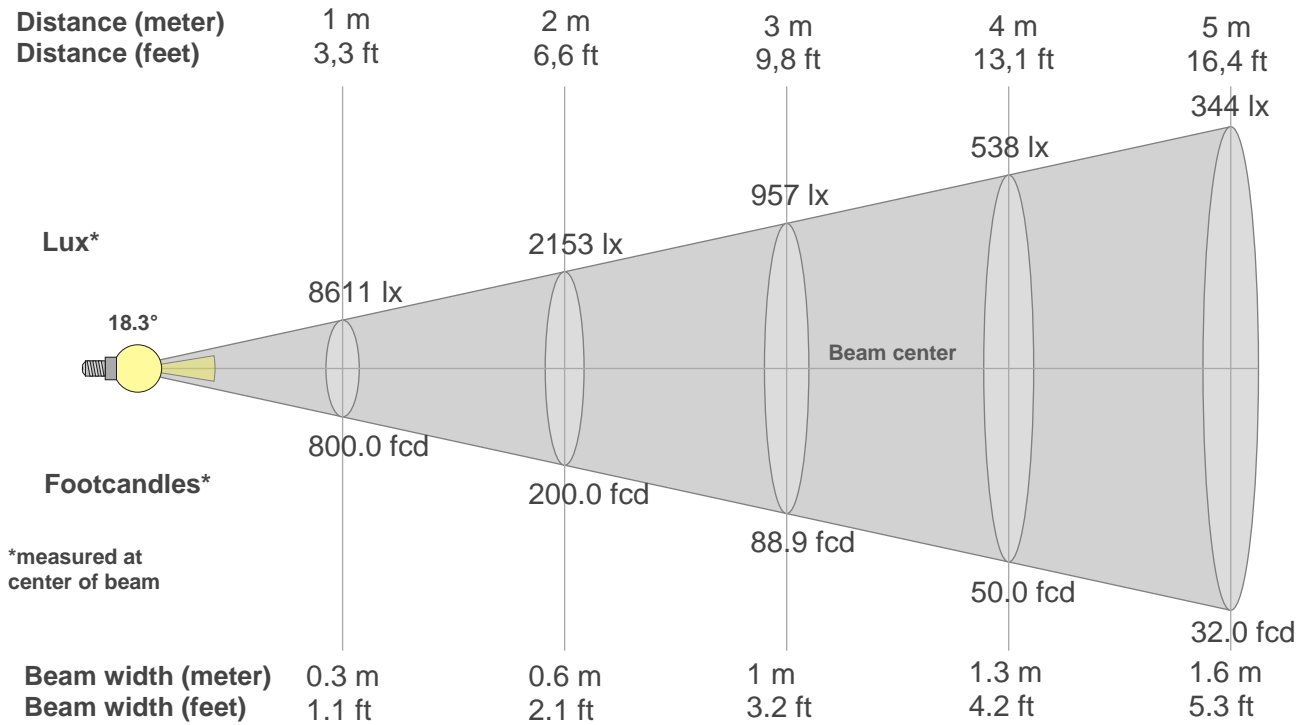
C1	C2	C3	C4	C5	C6	C7	C8	C9	C10	C11	C12	C13	C14	C15	C16
64.9	70.5	57.4	61.4	71.9	84.9	86.0	75.4	72.3	44.9	46.2	65.3	77.0	74.6	66.5	76.3

CQS Q values

Q1	Q2	Q3	Q4	Q5	Q6	Q7	Q8	Q9	Q10	Q11	Q12	Q13	Q14	Q15
82.5	92.1	57.8	48.9	62.8	69.4	76.3	85.9	86.1	68.5	61.6	64.3	68.7	60.6	69.7

Color parameters

Color temperature	Color rendering index	Red component	Color fidelity	Color gamut	Color quality scale	Color coordinate cie 1931	Color coordinate cie 1931	Color coordinate	Color coordinate	Color deviation from black body
CCT	CRI	CRI R9	TM30 Rf	TM30 Rg	CQS	x	y	u	v	Δuv
6437 K	72.3	-16.9	67.9	93.9	68.1	0.315	0.324	0.201	0.310	-0.0039



Beam intensities from 1-20m

1m	2m	3m	4m	5m	6m	7m	8m	9m	10m	11m	12m	13m	14m	15m	16m	17m	18m	19m	20m
3.3ft	6.6ft	9.8ft	13.1ft	16.4ft	19.7ft	23ft	26.2ft	29.5ft	32.8ft	36.1ft	39.4ft	42.7ft	45.9ft	49.2ft	52.5ft	55.8ft	59.1ft	62.3ft	65.6ft
8611lx	2153lx	957lx	538lx	344lx	239lx	176lx	135lx	106lx	86lx	71lx	60lx	51lx	44lx	38lx	34lx	30lx	27lx	24lx	22lx
800fcd	200fcd	88.9fcd	50fcd	32fcd	22.2fcd	16.3fcd	12.5fcd	9.9fcd	8fcd	6.6fcd	5.6fcd	4.7fcd	4.1fcd	3.6fcd	3.1fcd	2.8fcd	2.5fcd	2.2fcd	2fcd

Intensities in 0° c-plane

0°	1°	2°	3°	4°	5°	6°	7°	8°	9°	10°	11°	12°	13°	14°	15°	16°	17°	18°	19°
8611	8897	8897	8862	8821	8758	8679	8583	8448	8310	8096	7883	7590	7275	6916	6515	6103	5653	5203	4756
100%	103%	103%	103%	102%	102%	101%	100%	98%	97%	94%	92%	88%	84%	80%	76%	71%	66%	60%	55%

Intensities in 90° c-plane

0°	1°	2°	3°	4°	5°	6°	7°	8°	9°	10°	11°	12°	13°	14°	15°	16°	17°	18°	19°
8611	7965	7923	6737	5551	4406	3274	2393	1764	1224	983	743	659	582	532	495	459	423	387	347
100%	93%	92%	78%	64%	51%	38%	28%	20%	14%	11%	9%	8%	7%	6%	6%	5%	5%	4%	4%

Intensities in 180° c-plane

0°	1°	2°	3°	4°	5°	6°	7°	8°	9°	10°	11°	12°	13°	14°	15°	16°	17°	18°	19°
8611	8897	8897	8862	8821	8758	8679	8583	8448	8310	8096	7883	7590	7275	6916	6515	6103	5653	5203	4756
100%	103%	103%	103%	102%	102%	101%	100%	98%	97%	94%	92%	88%	84%	80%	76%	71%	66%	60%	55%

Intensities in 270° c-plane

0°	1°	2°	3°	4°	5°	6°	7°	8°	9°	10°	11°	12°	13°	14°	15°	16°	17°	18°	19°
8611	7965	7923	6737	5551	4406	3274	2393	1764	1224	983	743	659	582	532	495	459	423	387	347
100%	93%	92%	78%	64%	51%	38%	28%	20%	14%	11%	9%	8%	7%	6%	6%	5%	5%	4%	4%

Beam angle 50%	Field angle 10%	Cutoff angle 2,5%	Intensity ratio in 120° cone	Intensity ratio in 90° cone
18.3°	33.5°	58°	91.5%	88.0%