

Light efficiency:

56 Lumen/Watt

Light quality:

CRI: 72.3

Color temperature:

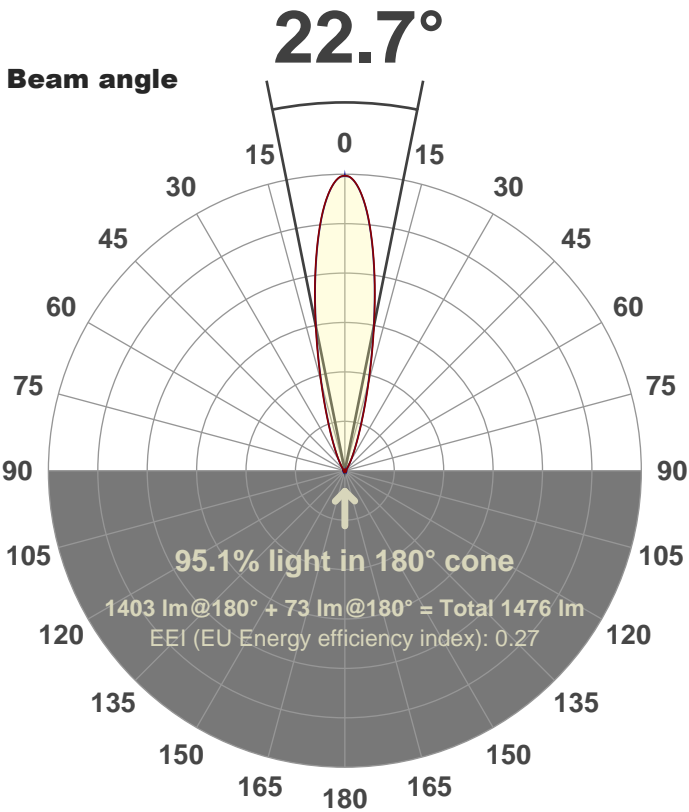
6349 K

Output: 1403 lm

Peak: 5919 cd

Power: 24.9 W

PF: 1.0



Product name:

FL25-CM-RGBW65K-IM-20-ELV-SM120-WHITE

Date and time:

18-Jun-18 4:36:06 PM

Additional Information:

LED: RGBW (6500K)

FIXTURE: FL25

FILM: 250255 (20°)

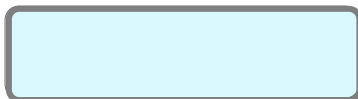
COLOR-AMP: ON

STABILIZED: YES

COLOR (RGBW): BLUE

PERFORMED BY: ABDULLAH QURESHI

Color

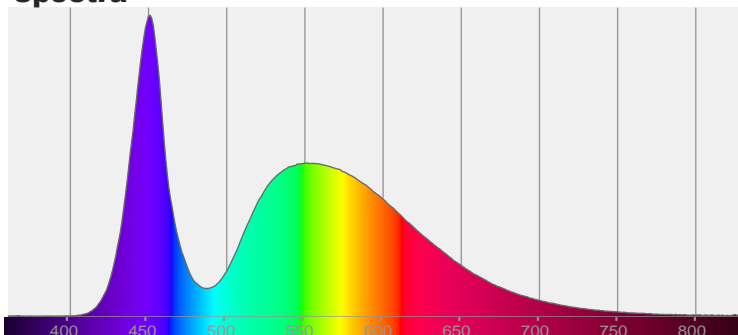


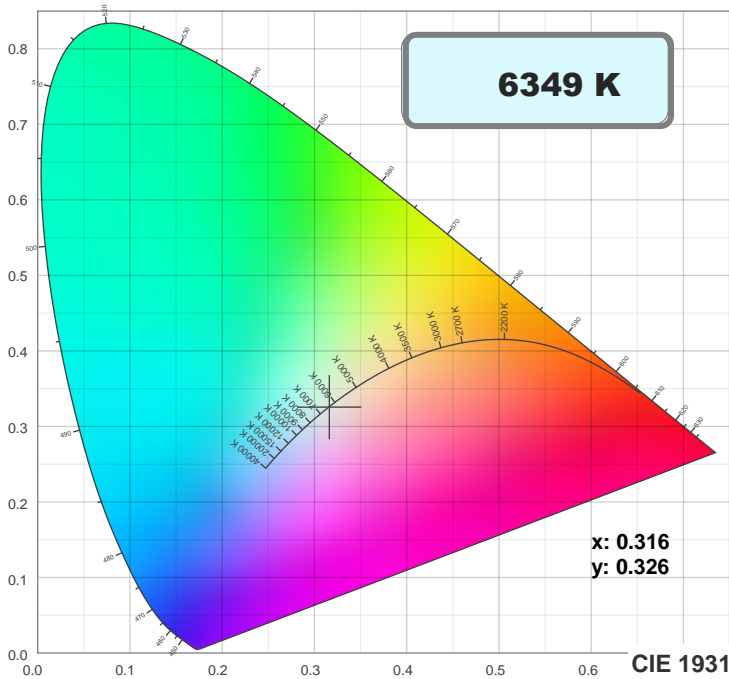
CIE 1931

x: 0.316

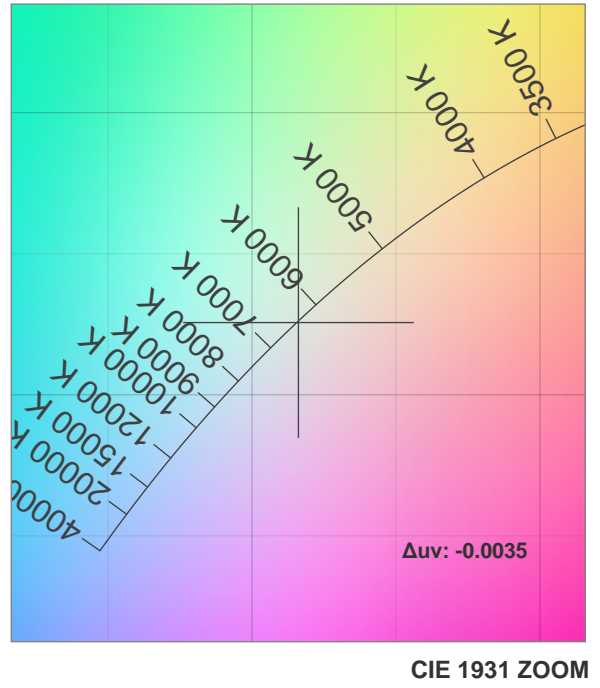
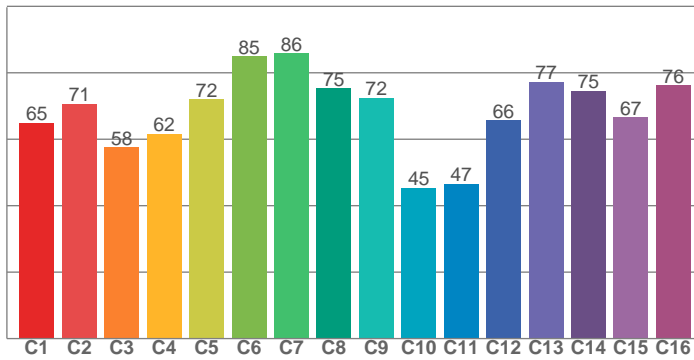
y: 0.326

Spectra

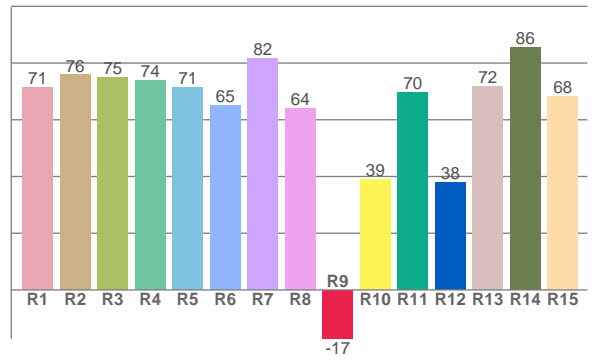




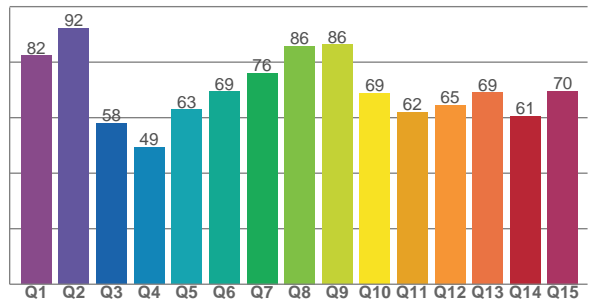
TM30: 68.1



CRI: 72.3 (R1-R8)



CQS: 68.3



CRI R values, only R1-R8 are used to calculate final CRI value

R1	R2	R3	R4	R5	R6	R7	R8	R9	R10	R11	R12	R13	R14	R15
71.4	75.8	75.0	73.8	71.3	65.1	81.6	64.1	-17.2	38.9	69.6	37.9	71.7	85.6	68.3

TM30 C values, 16 binned values out of total of 99 C values

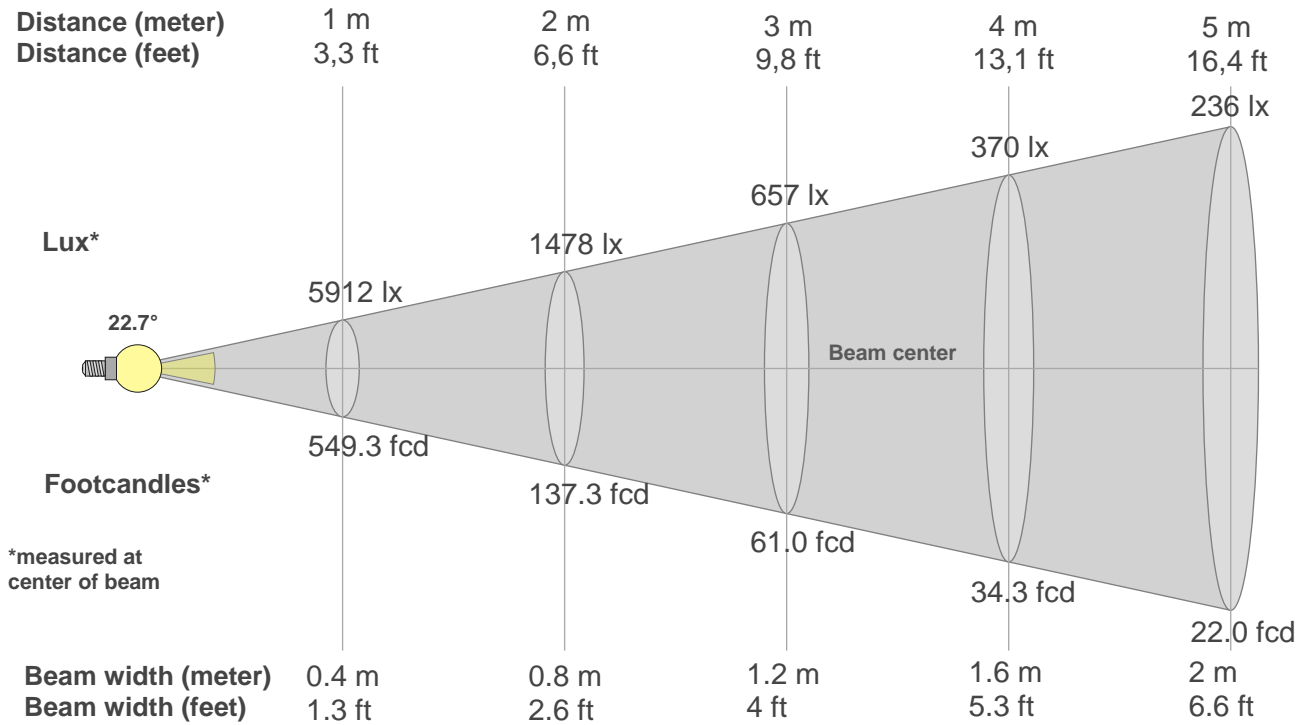
C1	C2	C3	C4	C5	C6	C7	C8	C9	C10	C11	C12	C13	C14	C15	C16
64.9	70.7	57.6	61.6	72.1	85.0	85.9	75.3	72.4	45.3	46.6	65.6	77.3	74.6	66.6	76.2

CQS Q values

Q1	Q2	Q3	Q4	Q5	Q6	Q7	Q8	Q9	Q10	Q11	Q12	Q13	Q14	Q15
82.3	92.2	58.0	49.3	63.0	69.3	76.1	85.7	86.4	68.8	61.9	64.6	69.0	60.6	69.6

Color parameters

Color temperature	Color rendering index	Red component	Color fidelity	Color gamut	Color quality scale	Color coordinate cie 1931	Color coordinate cie 1931	Color coordinate	Color coordinate	Color deviation from black body
CCT	CRI	CRI R9	TM30 Rf	TM30 Rg	CQS	x	y	u	v	Δuv
6349 K	72.3	-17.2	68.1	93.9	68.3	0.316	0.326	0.202	0.311	-0.0035



Beam intensities from 1-20m

1m	2m	3m	4m	5m	6m	7m	8m	9m	10m	11m	12m	13m	14m	15m	16m	17m	18m	19m	20m
3.3ft	6.6ft	9.8ft	13.1ft	16.4ft	19.7ft	23ft	26.2ft	29.5ft	32.8ft	36.1ft	39.4ft	42.7ft	45.9ft	49.2ft	52.5ft	55.8ft	59.1ft	62.3ft	65.6ft
5912lx	1478lx	657lx	370lx	236lx	164lx	121lx	92lx	73lx	59lx	49lx	41lx	35lx	30lx	26lx	23lx	20lx	18lx	16lx	15lx
549.3fcd	137.3fcd	61fcd	34.3fcd	22fcd	15.3fcd	11.2fcd	8.6fcd	6.8fcd	5.5fcd	4.5fcd	3.8fcd	3.3fcd	2.8fcd	2.4fcd	2.1fcd	1.9fcd	1.7fcd	1.5fcd	1.4fcd

Intensities in 0° c-plane

0°	2°	4°	6°	8°	10°	12°	14°	16°	18°	20°	22°	24°	26°	28°	30°	32°	34°	36°	38°
5912	5792	5432	4880	4196	3463	2751	2123	1606	1204	905	683	521	400	309	240	190	151	123	101
100%	98%	92%	83%	71%	59%	47%	36%	27%	20%	15%	12%	9%	7%	5%	4%	3%	3%	2%	2%

Intensities in 90° c-plane

0°	2°	4°	6°	8°	10°	12°	14°	16°	18°	20°	22°	24°	26°	28°	30°	32°	34°	36°	38°
5912	5789	5421	4860	4167	3428	2710	2074	1552	1152	857	646	493	381	297	233	185	149	121	101
100%	98%	92%	82%	70%	58%	46%	35%	26%	19%	14%	11%	8%	6%	5%	4%	3%	3%	2%	2%

Intensities in 180° c-plane

0°	2°	4°	6°	8°	10°	12°	14°	16°	18°	20°	22°	24°	26°	28°	30°	32°	34°	36°	38°
5912	5792	5432	4880	4196	3463	2751	2123	1606	1204	905	683	521	400	309	240	190	151	123	101
100%	98%	92%	83%	71%	59%	47%	36%	27%	20%	15%	12%	9%	7%	5%	4%	3%	3%	2%	2%

Intensities in 270° c-plane

0°	2°	4°	6°	8°	10°	12°	14°	16°	18°	20°	22°	24°	26°	28°	30°	32°	34°	36°	38°
5912	5789	5421	4860	4167	3428	2710	2074	1552	1152	857	646	493	381	297	233	185	149	121	101
100%	98%	92%	82%	70%	58%	46%	35%	26%	19%	14%	11%	8%	6%	5%	4%	3%	3%	2%	2%

Beam angle 50%	Field angle 10%	Cutoff angle 2,5%	Intensity ratio in 120° cone	Intensity ratio in 90° cone
22.7°	45.6°	68.2°	90.1%	86.3%